

J.D. TJEPKES, LS. JONES COUNTY ENGINEER'S OFFICE, 19501 HWY. 64, ANAMOSA, IOWA, 52205 (319)462-3785

UNITED STATES PUBLIC LAND SURVEY CORNER CERTIFICATE

LAND SURVEY MONUMENTS SITUATED IN SECTION 10, TOWNSHIP 86
 NORTH, RANGE 3 WEST OF THE 5TH P.M., JONES COUNTY, IOWA

CORNERS TO BE INDEXED

CORNER SECTION TOWNSHIP RANGE
 W1/4 10 86N 3W

OFFICE FILE NO.
 86309a_011707.tif

FIELD NOTES:
 12-18-2006
 BK #373
 P 79

STATE PLANE COORDINATE
 NAD 83 IOWA NORTH
 N 3571880.589
 E 5546493.337

NOTE: THE STATE PLANE COORDINATE AS INDICATED IS FOR CONVENIENCE ONLY. THE TIES AS SHOWN SHOULD BE USED TO REPLACE THE CORNER, IF DESTROYED

PREVIOUSLY RECORDED IN BOOK NA PAGE NA
 MONUMENT DESCRIPTION AND HOW ESTABLISHED
 PER TIES ON FILE AT JONES COUNTY ENGINEER'S OFFICE, FOUND CONCRETE MONUMENT W/ IRON ROD BURIED 4". TIES AS INDICATED FOR W1/4 CORNER SECTION 10 T86N R3W.

CORNERS TO BE INDEXED

CORNER SECTION TOWNSHIP RANGE
 S1/4 10 86N 3W

OFFICE FILE NO.
 86315c_011707.tif

FIELD NOTES:
 12-18-2006
 BK #373
 P 79

STATE PLANE COORDINATE
 NAD 83 IOWA NORTH
 N 3569038.524
 E 5549173.992

NOTE: THE STATE PLANE COORDINATE AS INDICATED IS FOR CONVENIENCE ONLY. THE TIES AS SHOWN SHOULD BE USED TO REPLACE THE CORNER, IF DESTROYED

PREVIOUSLY RECORDED IN BOOK NA PAGE NA
 MONUMENT DESCRIPTION AND HOW ESTABLISHED
 PER PHYSICAL EVIDENCE FOUND "X" NAILS, & FOUND IRON PIN BURIED 2" BELOW PRESENT ROAD TOP. TIES AS INDICATED FOR S1/4 CORNER SECTION 10 T86N R3W.

CORNERS TO BE INDEXED

CORNER SECTION TOWNSHIP RANGE
 SW COR 10 86N 3W

OFFICE FILE NO.
 86316e_011707.tif

STATE PLANE COORDINATE
 NAD 83 IOWA NORTH
 N 3569012.276
 E 5546507.862

NOTE: THE STATE PLANE COORDINATE AS INDICATED IS FOR CONVENIENCE ONLY. THE TIES AS SHOWN SHOULD BE USED TO REPLACE THE CORNER, IF DESTROYED

PREVIOUSLY RECORDED IN BOOK 2002 PAGE 0489
 MONUMENT DESCRIPTION AND HOW ESTABLISHED
 PER TIES FILED AS DOCUMENT 2002-0489. AT JONES COUNTY RECORDER'S OFFICE, FOUND 3/4" REBAR BURIED 12" BELOW PRESENT GROUND LEVEL. TIES AS INDICATED FOR SW CORNER SECTION 10 T86N R3W.

CORNERS TO BE INDEXED

CORNER SECTION TOWNSHIP RANGE

OFFICE FILE NO.

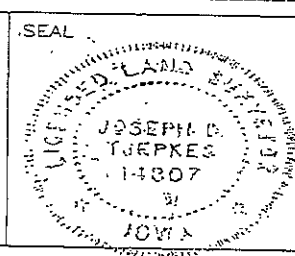
FIELD NOTES:
 12-18-2006
 BK #373
 P 80

PREVIOUSLY RECORDED IN BOOK _____ PAGE _____
 MONUMENT DESCRIPTION AND HOW ESTABLISHED

I hereby declare that this plat, survey or report was made by me or under my direct personal supervision and that I am a duly registered Land Surveyor under the laws of the State of Iowa.

Signed: *[Signature]* 1-17-07

Joseph D Tjepkes L.S. Iowa Reg. No. 14807
 My Registration Renewal Date is December 31, 2008



J.D. TJEPKES LS 14807
 JONES COUNTY
 ENGINEER'S OFFICE

19501 HWY. 64,
 ANAMOSA, IOWA,
 52205 (319)462-3785

2002 1390

FILED
RECORDERS OFFICE
JONES COUNTY IOWA

02 APR -8 AM 9:22

MARIE KRUTZFIELD
RECORDER 6.00 pd

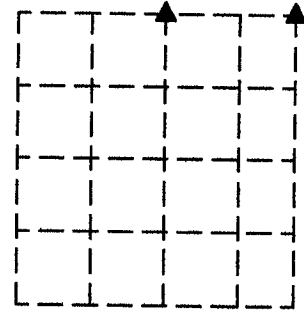
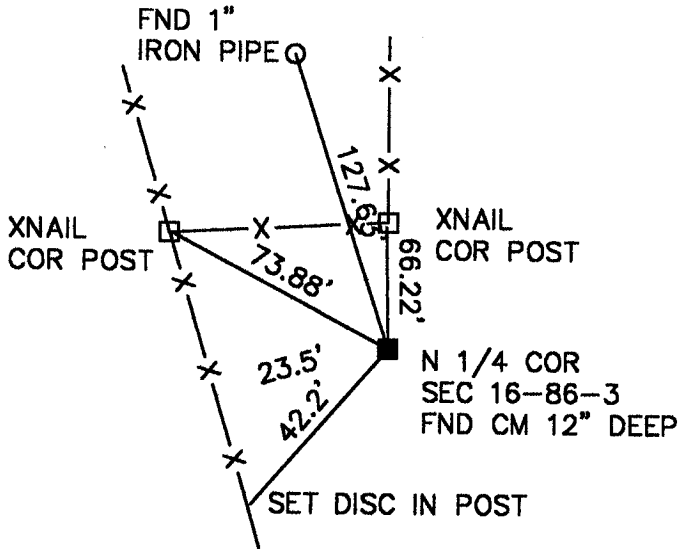
Preparer: Harold E Dillon Coralville, Iowa 52241 319 351 5647

United States Public Land Survey Corner Certificate

Land Survey corner in Section 16 Township 86 North,
Range 3 West of the 5th P.M. Jones County, Iowa

86316c

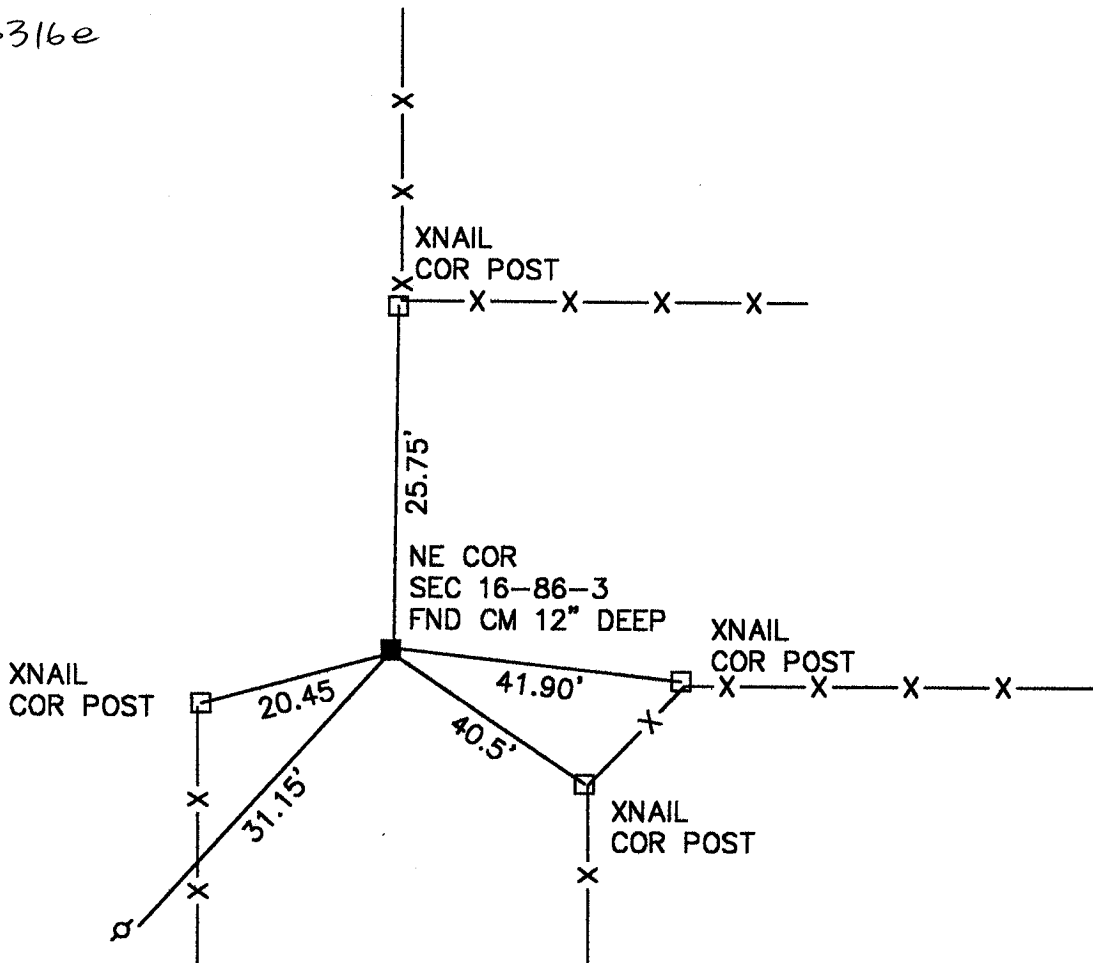
No Scale



Section 16-86-3

This certificate is being filed to update and correct older ties.

86316e



I hereby certify that this plat and survey was made by me or under my direct supervision and that I am a duly Licensed Land Surveyor under the laws of the State of Iowa.

Harold E Dillon 4-8-02
Harold E. Dillon Lic.# 6581 My license expires 12/31/02



Unless otherwise noted all distances are shown in feet and decimals thereof.

Surveyed 11/14/01
Page 1 of 1 Job# 9661