

Marie Krutzfield, Recorder  
 Jones County, Iowa

J.D. TJEPKES, LS. JONES COUNTY ENGINEER'S OFFICE, 19501 HWY. 64, ANAMOSA, IOWA, 52205 (319)462-3785

# UNITED STATES PUBLIC LAND SURVEY CORNER CERTIFICATE

LAND SURVEY MONUMENTS SITUATED IN SECTION 17, TOWNSHIP 86  
 NORTH, RANGE 3 WEST OF THE 5TH P.M., JONES COUNTY, IOWA

**CORNERS TO BE INDEXED**

CORNER	SECTION	TOWNSHIP	RANGE
E1/4	17	86N	3W

OFFICE FILE NO. 86317o\_110706.tif

FIELD NOTES: CL ASPHALT HARDCABLE ROAD

11-01-2006  
 BK # 368 P 79

STATE PLANE COORDINATE  
 NAD 83 IOWA NORTH  
 N 3566037.45  
 E 5541247.09

NOTE: THE STATE PLANE COORDINATE AS INDICATED IS FOR CONVENIENCE ONLY. THE TIES AS SHOWN SHOULD BE USED TO REPLACE THE CORNER, IF DESTROYED

PREVIOUSLY RECORDED IN BOOK NA PAGE NA  
 MONUMENT DESCRIPTION AND HOW ESTABLISHED  
 PER TIES ON RECORD AT JONES COUNTY ENGINEER'S OFFICE DATED 3-4-1998, PROJECT # C-817 MISC. BK. 1995 P 31, FOUND CONCRETE MONUMENT WITH IRON ROD 0.5' WEST OF PRESENT FENCE LINE. TIES AS INDICATED FOR THE E1/4 CORNER SECTION 17 T86N R3W.

**CORNERS TO BE INDEXED**

CORNER	SECTION	TOWNSHIP	RANGE
NW CORNER SW1/4-NE1/4	17	86N	3W

OFFICE FILE NO. 86317h\_110706.tif

FIELD NOTES:  
 11-01-2006  
 BK # 368 P 80

SET 5/8"X24" REBAR W/CAP #14807  
 FLUSH W/GROUND  
 NW COR. SW1/4-NE1/4 SEC 17-86-3

STATE PLANE COORDINATE  
 NAD 83 IOWA NORTH  
 N 3567266.39  
 E 5538571.87

NOTE: THE STATE PLANE COORDINATE AS INDICATED IS FOR CONVENIENCE ONLY. THE TIES AS SHOWN SHOULD BE USED TO REPLACE THE CORNER, IF DESTROYED

PREVIOUSLY RECORDED IN BOOK NA PAGE NA  
 MONUMENT DESCRIPTION AND HOW ESTABLISHED  
 PER BREAKDOWN OF THE NORTH EAST QUARTER SECTION 17, SET 5/8"X24" REBAR W/CAP #14807 & JONES CO. SIGN, FLUSH WITH PRESENT GROUND ON FORESLOPE OF TIMBER ROAD. TIES AS INDICATED FOR THE NW CORNER SW1/4-NE1/4 SECTION 17 T86N R3W.

**CORNERS TO BE INDEXED**

CORNER	SECTION	TOWNSHIP	RANGE

OFFICE FILE NO. \_\_\_\_\_

PREVIOUSLY RECORDED IN BOOK \_\_\_\_\_ PAGE \_\_\_\_\_  
 MONUMENT DESCRIPTION AND HOW ESTABLISHED \_\_\_\_\_

**CORNERS TO BE INDEXED**

CORNER	SECTION	TOWNSHIP	RANGE

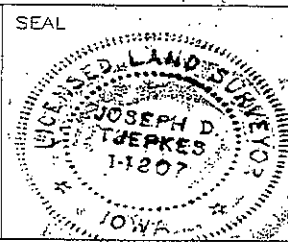
OFFICE FILE NO. \_\_\_\_\_

PREVIOUSLY RECORDED IN BOOK \_\_\_\_\_ PAGE \_\_\_\_\_  
 MONUMENT DESCRIPTION AND HOW ESTABLISHED \_\_\_\_\_

I hereby declare that this plat, survey or report was made by me or under my direct personal supervision and that I am a duly registered Land Surveyor under the laws of the State of Iowa.

Signed: Joseph D. Tjepkes 11.08.06

Joseph D. Tjepkes L.S. Iowa Reg. No. 14807  
 My Registration Renewal Date is December 31, 2006



J.D. TJEPKES LS 14807  
 JONES COUNTY  
 ENGINEER'S OFFICE  
 19501 HWY. 64,  
 ANAMOSA, IOWA,  
 52205 (319)462-3785

THIS IS NOT A CERTIFICATION

I

JONES COUNTY ENGINEER'S OFFICE, 19501 HWY. 64, ANAMOSA, IOWA, 52205 (319)462-3785

# UNITED STATES PUBLIC LAND SURVEY CORNER CERTIFICATE

LAND SURVEY MONUMENTS SITUATED IN SECTION 17, TOWNSHIP 86 NORTH, RANGE 3 WEST OF THE 5TH P.M., JONES COUNTY, IOWA

### CORNERS TO BE INDEXED

CORNER SECTION TOWNSHIP RANGE  
E-QUARTER 17 86N 3W



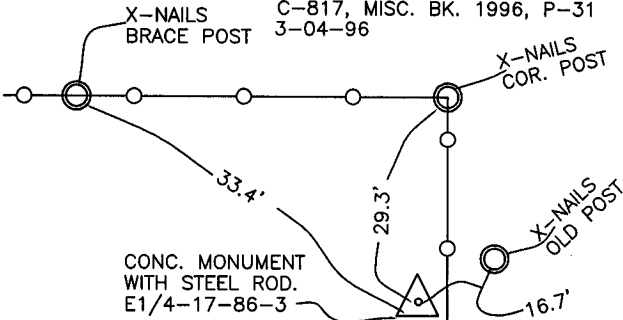
OFFICE FILE NO.

863170\_081904.tif

1449

CL ASPHALT

REF:  
JONES COUNTY SURVEY CREW.  
POWELL-TUETKEN-PARKER  
C-817, MISC. BK. 1996, P-31  
3-04-96

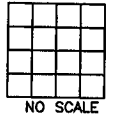


PREVIOUSLY RECORDED IN BOOK \_\_\_\_\_, PAGE \_\_\_\_\_  
MONUMENT DESCRIPTION AND HOW ESTABLISHED FOUND \_\_\_\_\_

CONCRETE MONUMENT WITH STEEL ROD, TIED AS INDICATED. EAST QUARTER CORNER OF SECTION 17, TOWNSHIP 86 NORTH, RANGE 3 WEST OF THE 5TH PRINCIPAL MERIDIAN, JONES COUNTY, IOWA.

### CORNERS TO BE INDEXED

CORNER SECTION TOWNSHIP RANGE



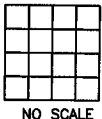
OFFICE FILE NO.

863170\_01905.tif

PREVIOUSLY RECORDED IN BOOK \_\_\_\_\_, PAGE \_\_\_\_\_  
MONUMENT DESCRIPTION AND HOW ESTABLISHED \_\_\_\_\_

### CORNERS TO BE INDEXED

CORNER SECTION TOWNSHIP RANGE

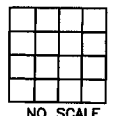


OFFICE FILE NO.

PREVIOUSLY RECORDED IN BOOK \_\_\_\_\_, PAGE \_\_\_\_\_  
MONUMENT DESCRIPTION AND HOW ESTABLISHED \_\_\_\_\_

### CORNERS TO BE INDEXED

CORNER SECTION TOWNSHIP RANGE



OFFICE FILE NO.

PREVIOUSLY RECORDED IN BOOK \_\_\_\_\_, PAGE \_\_\_\_\_  
MONUMENT DESCRIPTION AND HOW ESTABLISHED \_\_\_\_\_

~~I hereby declare that this plat, survey or report was made by me or under my direct personal supervision and that I am a duly registered Land Surveyor under the laws of the State of Iowa.~~

Signed:

SEAL

JONES COUNTY ENGINEER'S OFFICE

19501 HWY. 64,  
ANAMOSA, IOWA,  
52205 (319)462-3785