

FILED
RECORDERS OFFICE
JONES COUNTY IOWA

05 MAY 20 PM 2:22 2006 Pd

JD. TJEPKES LS, 23428 RIDGE ROAD, ANAMOSA, IOWA, 52205 (319)462-6067

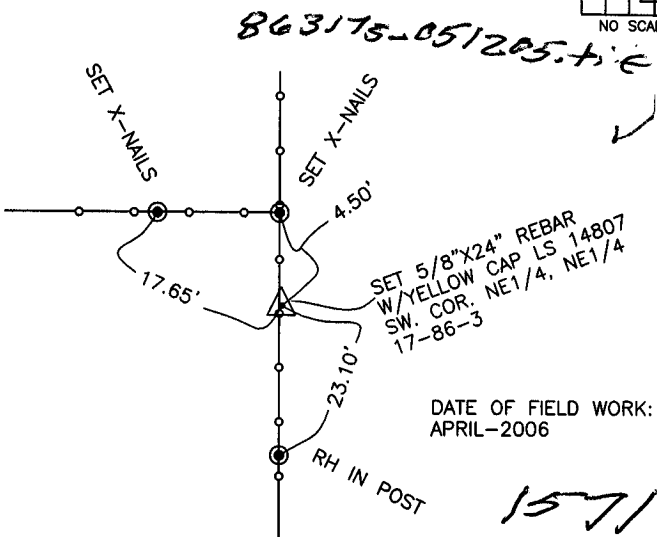
RECORDED

UNITED STATES PUBLIC LAND SURVEY CORNER CERTIFICATE

LAND SURVEY MONUMENTS SITUATED IN SECTION 17, TOWNSHIP 86 NORTH, RANGE 3 WEST OF THE 5TH P.M., JONES COUNTY, IOWA

CORNERS TO BE INDEXED

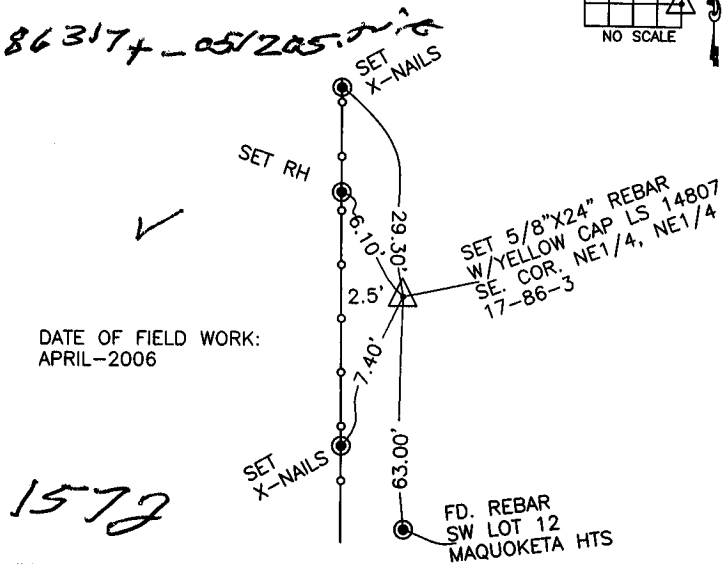
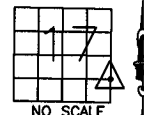
CORNER SW-NE-SE SECTION 17 TOWNSHIP 86N RANGE 3W



PREVIOUSLY RECORDED IN BOOK _____, PAGE _____
MONUMENT DESCRIPTION AND HOW ESTABLISHED SET
5/8"X24" REBAR W/YELLOW CAP LS 14807 PER SECTION BREAKDOWN,
SET REFERENCE POINTS AS INDICATED, SOUTHWEST CORNER,
NORTHEAST QUARTER, SOUTHEAST QUARTER, SECTION 17, TOWNSHIP
86 NORTH, RANGE 3 WEST OF THE 5TH PRINCIPAL MERIDIAN, JONES
COUNTY, IOWA.

CORNERS TO BE INDEXED

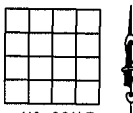
CORNER SE-NE-SE SECTION 17 TOWNSHIP 86N RANGE 3W



PREVIOUSLY RECORDED IN BOOK _____, PAGE _____
MONUMENT DESCRIPTION AND HOW ESTABLISHED SET
5/8"X24" REBAR W/YELLOW CAP LS 14807 PER SECTION BREAKDOWN,
SET REFERENCE POINTS AS INDICATED, SOUTHWEST CORNER,
NORTHEAST QUARTER, SOUTHEAST QUARTER, SECTION 17, TOWNSHIP
86 NORTH, RANGE 3 WEST OF THE 5TH PRINCIPAL MERIDIAN, JONES
COUNTY, IOWA.

CORNERS TO BE INDEXED

CORNER SECTION TOWNSHIP RANGE

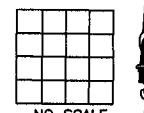


OFFICE FILE NO.

PREVIOUSLY RECORDED IN BOOK _____, PAGE _____
MONUMENT DESCRIPTION AND HOW ESTABLISHED _____

CORNERS TO BE INDEXED

CORNER SECTION TOWNSHIP RANGE



OFFICE FILE NO.

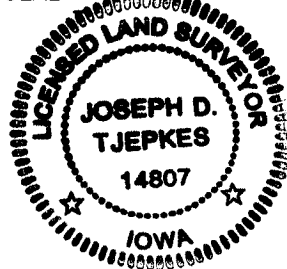
PREVIOUSLY RECORDED IN BOOK _____, PAGE _____
MONUMENT DESCRIPTION AND HOW ESTABLISHED _____

I hereby declare that this plat, survey or report was made by me or under my direct personal supervision and that I am a duly registered Land Surveyor under the laws of the State of Iowa.

Signed: Joseph D. Tjepkes L.S. 14807
My license renewal date is December 31, 2006.

Pages or sheets covered by this seal.
(Entire submission unless specified here)

SEAL



JD TJEPKES

23428 RIDGE RD.
ANAMOSA, IOWA,
52205 (319)462-6067

E