

2001 3970

FILED  
RECORDERS OFFICE  
JONES COUNTY IOWA

01 NOV 16 AM 11:57

MARIE KRUTZFIELD  
RECORDER No Fee

86317c-110901

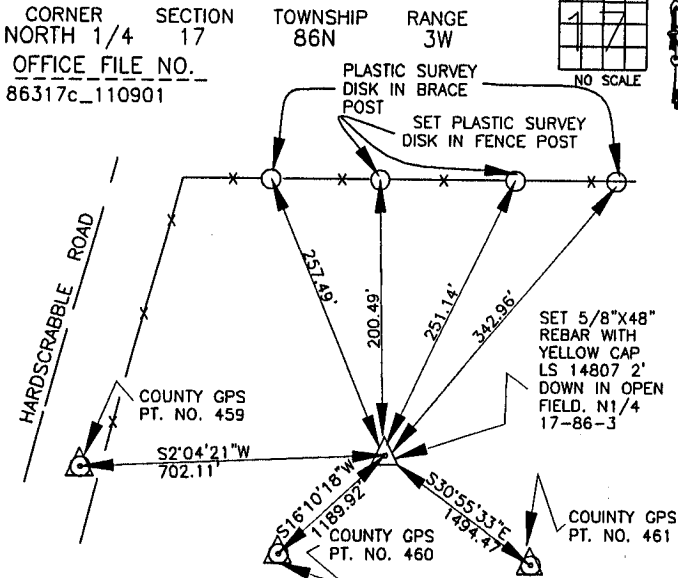
FD # 319

J.D. Tjepkes, LS. JONES COUNTY ENGINEER'S OFFICE, 19501 HWY. 64, ANAMOSA, IOWA, 52205 (319)462-3785

# UNITED STATES PUBLIC LAND SURVEY CORNER CERTIFICATE

LAND SURVEY MONUMENTS SITUATED IN SECTION 17, TOWNSHIP 86  
NORTH, RANGE 3 WEST OF THE 5TH P.M., JONES COUNTY, IOWA

### CORNERS TO BE INDEXED



PREVIOUSLY RECORDED IN FILE NO. 97 98 3332  
MONUMENT DESCRIPTION AND HOW ESTABLISHED SET 5/8"X48" REBAR WITH YELLOW CAP LS 14807 2' BELOW SURFACE IN OPEN FIELD PER INFORMATION AS SHOWN ON CORNER CERTIFICATE FILE NO. 97 97 3332. MONUMENT & 60D SPIKES AS SHOWN ON FILED CERT. NOT FOUND. SET NEW MONUMENT PER BEARINGS AND DISTANCES AS INDICATED ON SAID FILED CERT. SET REFERENCE POINTS AND TIED OUT AS INDICATED. N1/4-17-86-3.

### CORNERS TO BE INDEXED

CORNER	SECTION	TOWNSHIP	RANGE

OFFICE FILE NO. \_\_\_\_\_

PREVIOUSLY RECORDED IN BOOK \_\_\_\_\_, PAGE \_\_\_\_\_  
MONUMENT DESCRIPTION AND HOW ESTABLISHED \_\_\_\_\_

### CORNERS TO BE INDEXED

CORNER	SECTION	TOWNSHIP	RANGE

OFFICE FILE NO. \_\_\_\_\_

PREVIOUSLY RECORDED IN BOOK \_\_\_\_\_, PAGE \_\_\_\_\_  
MONUMENT DESCRIPTION AND HOW ESTABLISHED \_\_\_\_\_

### CORNERS TO BE INDEXED

CORNER	SECTION	TOWNSHIP	RANGE

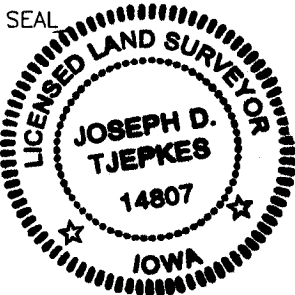
OFFICE FILE NO. \_\_\_\_\_

PREVIOUSLY RECORDED IN BOOK \_\_\_\_\_, PAGE \_\_\_\_\_  
MONUMENT DESCRIPTION AND HOW ESTABLISHED \_\_\_\_\_

I hereby declare that this plat, survey or report was made by me or under my direct personal supervision and that I am a duly registered Land Surveyor under the laws of the State of Iowa.

Signed: *Joseph D. Tjepkes* 11-09-01

Joseph D. Tjepkes L.S. Iowa Reg. No. 14807  
My Registration Renewal Date is December 31, 2002



J.D. Tjepkes LS 14807  
JONES COUNTY  
ENGINEER'S OFFICE

19501 HWY. 64,  
ANAMOSA, IOWA,  
52205 (319)462-3785

FILED  
RECORDERS OFFICE  
JONES COUNTY IOWA

98 APR 20 PM 12: 02

LINDA J. BENDIXEN  
RECORDER *L. J. Bendixen*

STUMBO AND ASSOCIATES LAND SURVEYING, INC. P.O. BOX 1664 AMES, IOWA 50010 Ph#515-233-3684

UNITED STATES PUBLIC LAND SURVEY CORNER CERTIFICATE OF

Land Survey Monuments situated in Section 8, Township 26 North, Range 3 West  
of the Fifth Principal Meridian, Jones County, Iowa.  
Previously recorded NA

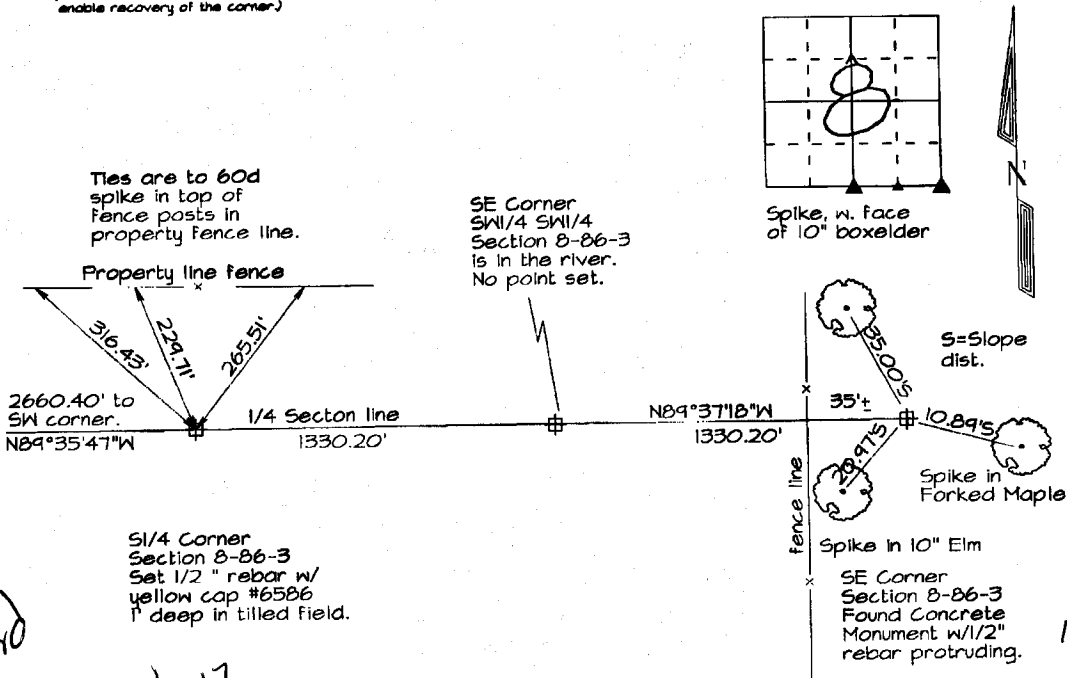
(BOOK, PAGE / INST. NO. / CABINET, SLIDE)

(Show reason for preparing this certificate, the evidence and detailed procedures used in establishing the corner positions and monumentation found or placed.)

Monument Description and Remarks: This certificate is being prepared because there is no certificate of record for the corners illustrated herein. The S1/4 was placed using a combination of found physical evidence, deed descriptions and actual measurements. The SE corner was found with the help of a longtime resident landowner who also bore witness as to the validity of the corner as found.

PLAN - VIEW

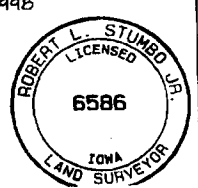
(Show a minimum of three reference ties to durable physical objects, relevant monuments and physical conditions that will enable recovery of the corner.)



Certification: I hereby certify that this land surveying document was prepared and the related survey work was performed by me or under my direct personal supervision and that I am a duly licensed Land Surveyor under the laws of the State of Iowa.

*Robert L. Stumbo, Jr.* Date: 4-17-98  
Robert L. Stumbo, Jr. License #6586  
My license renewal date is December 31, 1998

SEAL



List Corners to be Indexed

Corners	Section	Twp	Range
S 1/4	8	26	3
SE	8	26	3
SE Corner			
SW1/4SW1/4 8	8	26	3

86317c-041798  
86317e-041798