

2005 0188

FILED
RECORDERS OFFICE
JONES COUNTY IOWA

05 JAN 14 PM 1:48

MARIE KRUTZFIELD 7.00 pd
RECORDER

J.D. TJEKES, LS 14807, 23428 RIDGE ROAD, ANAMOSA, IOWA 52205 (319-462-6067)

UNITED STATES PUBLIC LAND SURVEY CORNER CERTIFICATE

LAND SURVEY MONUMENTS SITUATED IN SECTION 18, TOWNSHIP 86
NORTH, RANGE 3 WEST OF THE 5TH P.M., JONES COUNTY, IOWA

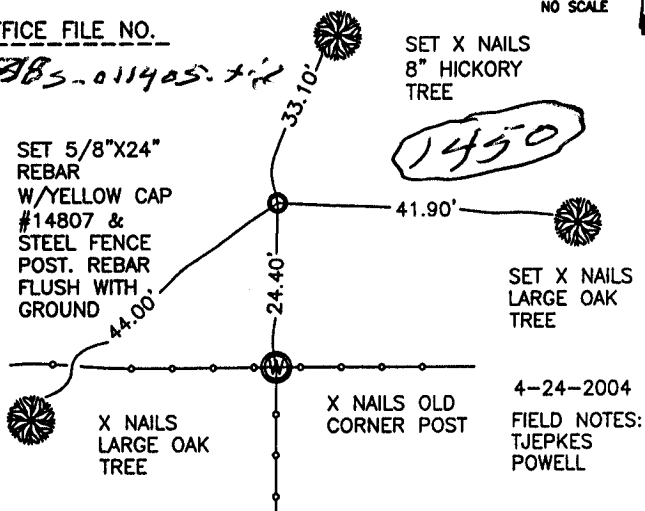
CORNERS TO BE INDEXED

CORNER SECTION TOWNSHIP RANGE
NE-SW-SE 18 86N 3W



OFFICE FILE NO.

BGBS-011405-1/2



1450

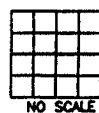
4-24-2004
FIELD NOTES:
TJEKES
POWELL

PREVIOUSLY RECORDED IN BOOK NA, PAGE NA
MONUMENT DESCRIPTION AND HOW ESTABLISHED _____

PER BREAKDOWN OF SECTION 18 T86N R3W, SET 5/8"X24" REBAR W/YELLOW CAP #14807 & A STEEL FENCE POST ALONG SIDE. REBAR FLUSH WITH GROUND. TIES AS INDICATED.

CORNERS TO BE INDEXED

CORNER SECTION TOWNSHIP RANGE

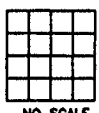


OFFICE FILE NO. _____

PREVIOUSLY RECORDED IN BOOK _____, PAGE _____
MONUMENT DESCRIPTION AND HOW ESTABLISHED _____

CORNERS TO BE INDEXED

CORNER SECTION TOWNSHIP RANGE

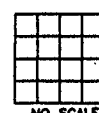


OFFICE FILE NO. _____

PREVIOUSLY RECORDED IN BOOK _____, PAGE _____
MONUMENT DESCRIPTION AND HOW ESTABLISHED _____

CORNERS TO BE INDEXED

CORNER SECTION TOWNSHIP RANGE



OFFICE FILE NO. _____

PREVIOUSLY RECORDED IN BOOK _____, PAGE _____
MONUMENT DESCRIPTION AND HOW ESTABLISHED _____

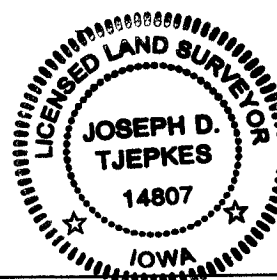
I hereby declare that this plat, survey or report was made by me or under my direct personal supervision and that I am a duly registered Land Surveyor under the laws of the State of Iowa.

Signed:

[Signature] 1-14-05

Joseph D. Tjepkes L.S. Iowa Reg. No. 14807
My Registration Renewal Date is December 31, 2006

SEAL



J.D. TJEKES LS 14807
23428 RIDGE ROAD
ANAMOSA, IOWA,
52205 (319)462-6067

2006