

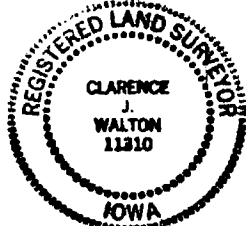
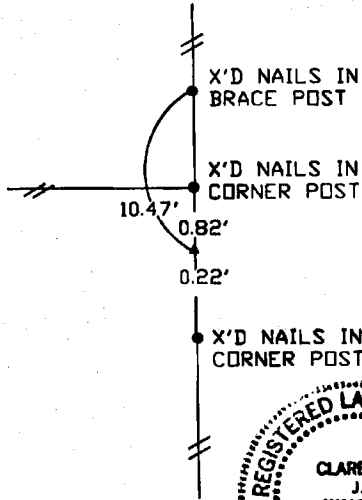
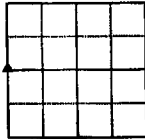
# UNITED STATES PUBLIC LAND SURVEY CORNER CERTIFICATE

LAND SURVEY MONUMENTS SITUATED IN SECTION 18, TOWNSHIP 86 NORTH  
RANGE 3 WEST OF THE 5TH P.M., JONES COUNTY, IOWA.

NO SCALE



W 1/4



PREVIOUSLY RECORDED IN BOOK \_\_\_\_\_ PAGE \_\_\_\_\_

MONUMENT DESCRIPTION AND HOW ESTABLISHED \_\_\_\_\_

SET 1/2" REBAR WITH YELLOW PLASTIC CAP WITH #11310

AT INTERSECTION OF FENCE LINE.

NO SCALE



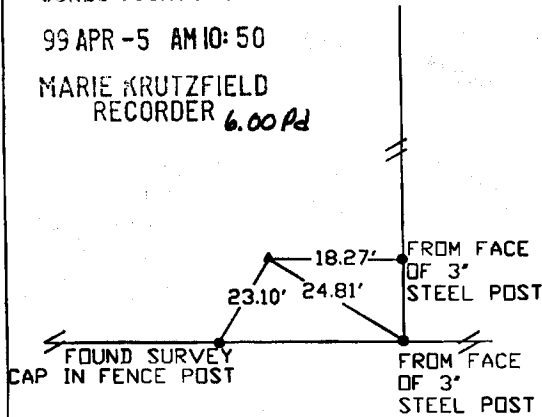
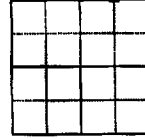
NW NE 1/4 NE 1/4

**1999 1209**

FILED  
RECORDERS OFFICE  
JONES COUNTY IOWA

99 APR -5 AM 10:50

MARIE KRUTZFIELD  
RECORDER *6.00 Pd*



PREVIOUSLY RECORDED IN BOOK \_\_\_\_\_ PAGE \_\_\_\_\_

MONUMENT DESCRIPTION AND HOW ESTABLISHED \_\_\_\_\_

FOUND 1/2" REBAR 2" DEEP FROM PREVIOUS SURVEY.

I hereby declare that this plat, survey or report was made by me or under my direct personal supervision and that I am a duly registered Land Surveyor under the laws of the State of Iowa.  
Signed Clarence J. Walton Date 4/2/99  
Clarence J. Walton L.S. Iowa Reg No. 11310  
My Registration Renewal Date is December 31, 1999

CORNERS TO BE INDEXED			
CORNER	SECTION	TOWNSHIP	RANGE
W 1/4	18	T86N	R3W
NW NE 1/4	18	T86N	R3W
NE 1/4			

**BRAIN ENGINEERING, INC.**  
777 10TH STREET  
MARION, IOWA 52302  
(319) 373-1318

23289-10

*86318d-040299*  
*864210-040299*

97 98 1744

FILED  
RECORDERS OFFICE  
JONES COUNTY IOWA

97 DEC -9 AM 9:50

LINDA J. BENDIXEN  
RECORDER *LJB*

PREPARED BY WM. BURGER LANDSURVEYORS 510 3RD STREET WEST COURT, NORTHINGTON, IOWA 52078 PHONE (319) 898 2028

### UNITED STATES PUBLIC LAND SURVEY CORNER CERTIFICATE

LAND SURVEY MONUMENT SITUATED IN SECTION 18, TOWNSHIP 86N, RANGE 3W, OF THE FIFTH PRINCIPAL MERIDIAN, JONES COUNTY, IOWA. PREVIOUSLY RECORDED IN NA IN COUNTY RECORDER'S OFFICE

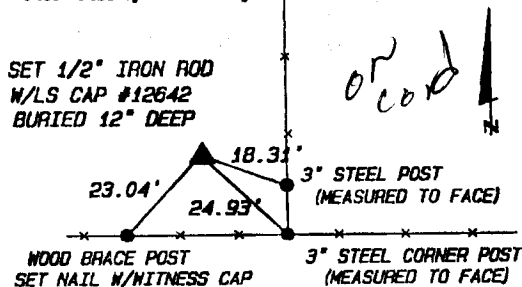
MONUMENT DESCRIPTION AND REMARKS: (NO CORNER CERTIFICATES FOUND AT THE COUNTY RECORDERS OFFICE)  
NE CORNER --- FOUND 1" PIPE USED BY PREVIOUS SURVEYOR AS NE CORNER OF SECTION

EAST 1/4 CORNER --- RESET CORNER FROM INFORMATION ON A PREVIOUS RECORDED PLAT BOOK 396, PAGE 69

NW CORNER NE1/4 NE1/4 --- NO MONUMENTS AVAILABLE TO THE WEST, USED EXISTING ROADWAY EVIDENCE AND FENCELINE EVIDENCE TO ESTABLISH N1/4 CORNER AND SET NW COR. OF THE NE1/4 NE1/4 ON LINE AND MIDWAY BETWEEN THE NE CORNER AND SAID N1/4 CORNER

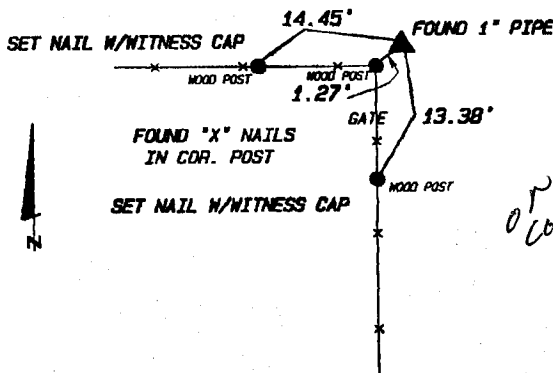
NOTE: SET 1/2" IRON ROD W/LS CAP #12642 AT THE E1/4 CORNER AND THE NW COR. OF THE NE1/4 NE1/4

#### NW NE1/4 NE1/4



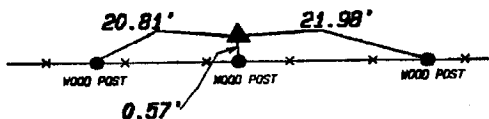
#### PLAN VIEW

#### NE CORNER

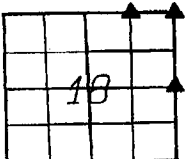
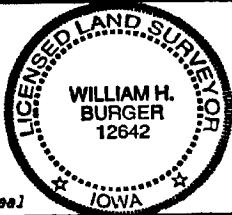


#### EAST 1/4 CORNER

SET 1/2" IRON ROD W/LS CAP #12642



NOTE: SET NAIL W/WITNESS CAP AT ALL TIE POINTS



Sec. 18 TWP. 86N Range 3W

I hereby certify that this land surveying document was prepared and related survey work was performed by me or under my direct personal supervision and that I am a duly licensed Land Surveyor under the laws of the State of Iowa.

*William H. Burger* 12/5/97  
Date

William H. Burger  
License number 12642  
My license renewal date is December 31, 1998  
Pages or Sheet covered by this seal: Sheet 1 of 1

#### CORNERS TO BE INDEXED

CORNER	SECTION	TWP.	RANGE
NE COR.	18	86N	3W
EAST 1/4	18	86N	3W
NW-NE1/4 NE1/4	18	86N	3W
	SECTION	TWP.	RANGE

86318d-120597  
86318e-120597  
86318o-120597