

2006 0225

FILED  
RECORDERS OFFICE  
JONES COUNTY IOWA

06 JAN 17 PM 4:30

MARIE KRUTZFIELD  
RECORDER 7:00 PM

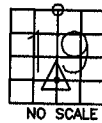
J.D. TJEPKES LS, 23428 RIDGE RD. ANAMOSA, IOWA, 52205 (319)462-6067

# UNITED STATES PUBLIC LAND SURVEY CORNER CERTIFICATE

LAND SURVEY MONUMENTS SITUATED IN SECTION 19, TOWNSHIP 86  
NORTH, RANGE 3 WEST OF THE 5TH P.M., JONES COUNTY, IOWA

### CORNERS TO BE INDEXED

CORNER	SECTION	TOWNSHIP	RANGE
NE,SE,SW	19	86N	3W



DATE OF FIELD WORK:

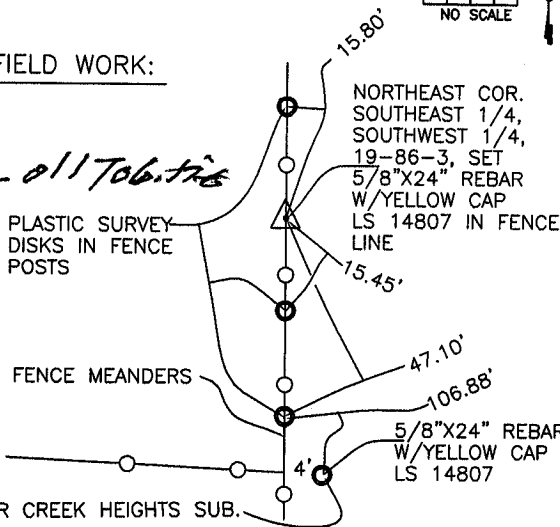
NOV. 2005

*86319-011706 ties*

PLASTIC SURVEY  
DISKS IN FENCE  
POSTS

*1785*

FENCE MEANDERS

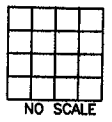


PREVIOUSLY RECORDED IN BOOK \_\_\_\_\_, PAGE \_\_\_\_\_  
MONUMENT DESCRIPTION AND HOW ESTABLISHED \_\_\_\_\_

5/8"X24" REBAR W/YELLOW CAP LS 14807 IN FENCE LINE PER  
SECTION BREAKDOWN AND PRORATED DISTANCES. NORTHEAST CORNER  
OF THE SOUTHEAST QUARTER OF THE SOUTHWEST QUARTER OF SEC-  
TION 19, TOWNSHIP 86 NORTH, RANGE 3 WEST OF 5TH PM, JONES  
COUNTY, IOWA. TIES AS INDICATED.

### CORNERS TO BE INDEXED

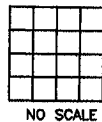
CORNER	SECTION	TOWNSHIP	RANGE



PREVIOUSLY RECORDED IN BOOK \_\_\_\_\_, PAGE \_\_\_\_\_  
MONUMENT DESCRIPTION AND HOW ESTABLISHED \_\_\_\_\_

### CORNERS TO BE INDEXED

CORNER	SECTION	TOWNSHIP	RANGE



### CORNERS TO BE INDEXED

CORNER	SECTION	TOWNSHIP	RANGE

