

# SECTION CORNER CERTIFICATE

OF  
 LAND SURVEY MONUMENTS SITUATED IN SECTION 1, TOWNSHIP 86 NORTH,  
 RANGE 3 WEST, OF THE FIFTH PRINCIPAL MERIDIAN, JONES, COUNTY, IOWA.

PREVIOUSLY RECORDED IN BOOK \_\_\_\_\_ AT PAGE \_\_\_\_\_

FOR RECORDER'S USE

**REASON FOR PREPARING CERTIFICATE:**

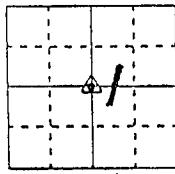
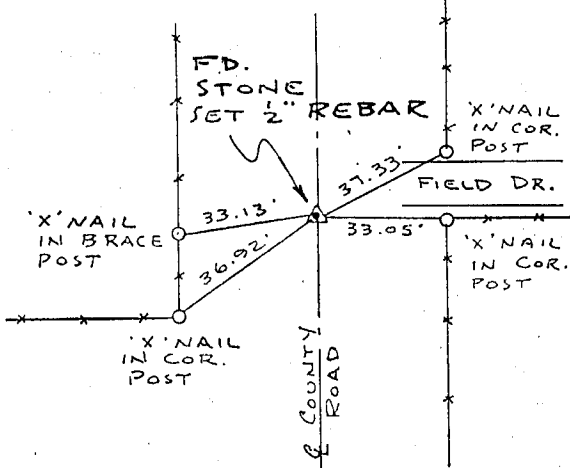
- A) THERE IS NO CERTIFICATE FOR THE CORNER ON FILE WITH THE RECORDER OF THE COUNTY IN WHICH THE CORNER IS LOCATED.
- B) CORNER POSITION DIFFERS FROM THAT SHOWN IN THE PUBLIC RECORDS OF THE COUNTY IN WHICH THE CORNER IS LOCATED.
- C) THE CORNER MONUMENT HAS BEEN REPLACED OR MODIFIED.
- D) THE REFERENCE TIES REFERRED TO IN AN EXISTING PUBLIC RECORD ARE INCORRECT.

**MONUMENT DESCRIPTION AND REMARKS :**

N.W. CORNER S.E. 14 SECTION 1 - T 86 N - R 3 W FOUND  
 STONE (18" x 24" ACROSS TOP) 20" DEEP ON E COUNTY  
 ROAD SET 1/2" REBAR W/ U.S. CAP # 11954 ON TOP  
 CENTER OF STONE 2" DEEP IN LINE W/ FENCE EAST

## RECOVERY TIE DRAWING

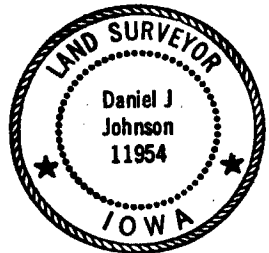
N.W. COR. - S.E. 14 1-86-3



NOT TO SCALE

3-3-93 ON CARD M.S.

I, DANIEL J. JOHNSON, CERTIFY THAT THE CORNER LOCATION(S) SHOWN ON THIS RECORD WERE DETERMINED BY ME OR UNDER MY DIRECTION AND CONTROL AND THAT THIS U.S. PUBLIC LAND SURVEY MONUMENT RECORD IS CORRECT AND COMPLETE TO THE BEST OF MY KNOWLEDGE AND BELIEF.



*Daniel J. Johnson* 12-30-92  
 DANIEL J. JOHNSON L.S. NO 11954 DATE

D Z M O R E	▲ GOVERNMENT CORNER ○ 5/8" TIC PIN SET --- CENTERLINE - - - EXISTING FENCE LINE - - - R.O.W. LINE	SHEET TITLE: <b>U.S. PUBLIC LAND SURVEY RECORD</b>  PROJECT TITLE: <b>PETER HASLER SURVEY</b>	<b>H E L L</b>	HALL AND HALL ENGINEERS, INC. 226 29TH STREET DRIVE S.E. CEDAR RAPIDS, IOWA 52403 319-362-9548		
	D W N R.W.B.	C H K D.S.J.		A P P	D A T E 5-4-92	S C A L E NONE

86301m-123012