

Jones County Marie Krutzfield  
 Fee Book 2011 0859  
 03/31/2011 @1034AM # Pages 1  
 ZSC SEC COR CERT  
 Total Fees: \$9.00

Prepared by *Wm. Burger LandSurveyors* 510 3rd Street West Court, Worthington, Iowa Phone 563 - 855 2028

### UNITED STATES PUBLIC LAND SURVEY CORNER CERTIFICATE

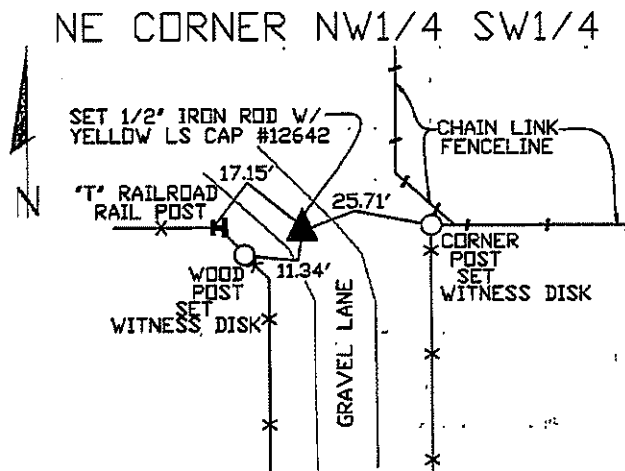
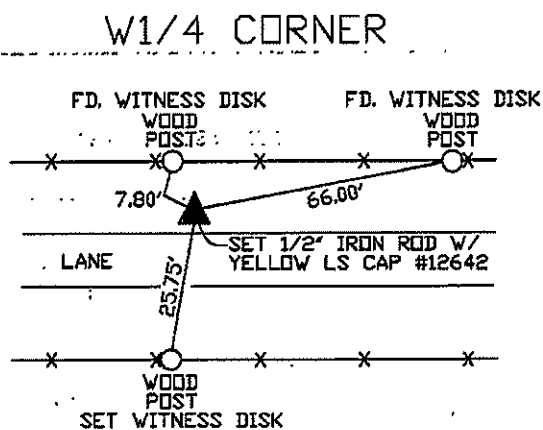
Land Survey Monuments situated in Section 21, Township 86N, Range 3W, of the Fifth Principal Meridian, Jones County, Iowa. Previously recorded in 2001 3973 in the Office of the County Recorder

**Monument Description and Remarks:**

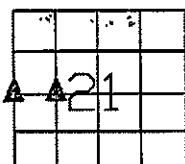
W1/4 CORNER - SET 1/2" IRON ROD W/YELLOW LS CAP #12642 - USED PREVIOUSLY RECORDED CORNER  
 CERTIFICATE RECORDED IN THE OFFICE OF THE JONES COUNTY RECORDER, FILE NO. 2001 3973 TO SET THIS CORNER

NE CORNER NW1/4 SW1/4 - SET 1/2" IRON ROD W/YELLOW LS CAP #12642 - USED INFORMATION FROM EXISTING PLAT FOUND IN THE OFFICE OF THE JONES COUNTY RECORDER, FILE NO. 2004 0351 TO SET THIS CORNER

#### PLAN VIEW



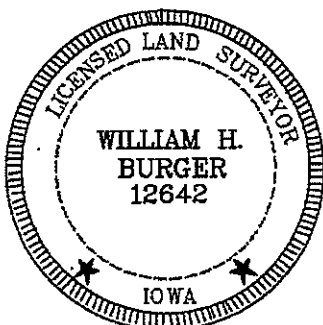
PLAN SUB. 17c



SEC. 21 TWP. 86N RANGE 3W

**CORNERS TO BE INDEXED**

W1/4 CORNER	21	86N	3W
NE CORNER NW1/4 SW1/4	21	86N	3W



I hereby certify that this land surveying document was prepared and related survey work was performed by me or under my direct personal supervision and that I am a duly licensed Land Surveyor under the laws of the State of Iowa.

*William H. Burger* 3/30/11  
 William H. Burger Date

License number 12642

My license renewal date is December 31, 2012

Pages or Sheets covered by this seal Sheet 1 of 1

2001 3973

FILED  
RECORDERS OFFICE  
JONES COUNTY IOWA

01 NOV 16 PM 12:00

MARIE KRUTZFIELD  
RECORDER No Fee

86320e-102401

# 1037

86320o-102401

# 1038

J.D. Tjepkes, L.S. JONES COUNTY ENGINEER'S OFFICE, 19501 HWY. 64, ANAMOSA, IOWA, 52205 (319)462-3785

# UNITED STATES PUBLIC LAND SURVEY CORNER CERTIFICATE

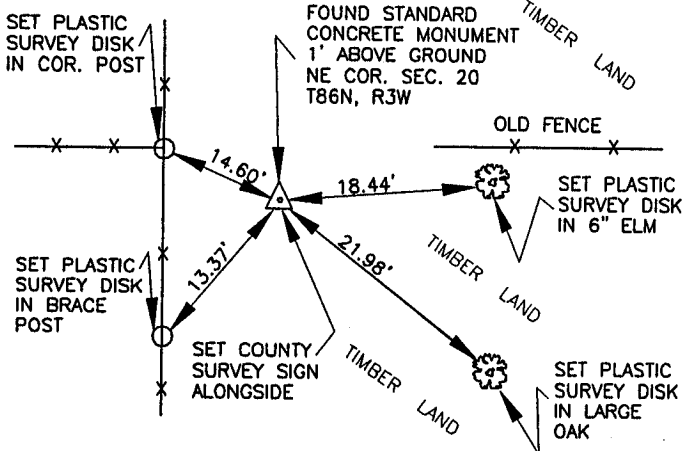
LAND SURVEY MONUMENTS SITUATED IN SECTION 20, TOWNSHIP 86  
NORTH, RANGE 3 WEST OF THE 5TH P.M., JONES COUNTY, IOWA

### CORNERS TO BE INDEXED

CORNER SECTION TOWNSHIP RANGE  
NORTHEAST 20 86N 3W

OFFICE FILE NO. \_\_\_\_\_

86320e\_100101



PREVIOUSLY RECORDED IN BOOK 292, PAGE 277  
MONUMENT DESCRIPTION AND HOW ESTABLISHED FOUND  
STANDARD CONCRETE MONUMENT 1' ABOVE SURFACE. SET COUNTY  
SURVEY SIGN ALONGSIDE. SET REFERENCE POINTS AND TIED OUT  
AS INDICATED. NORTHEAST CORNER SECTION 20, TOWNSHIP 86  
NORTH, RANGE 3 WEST, 5TH P.M., JONES COUNTY, IOWA

### CORNERS TO BE INDEXED

CORNER SECTION TOWNSHIP RANGE

OFFICE FILE NO. \_\_\_\_\_

PREVIOUSLY RECORDED IN BOOK \_\_\_\_\_, PAGE \_\_\_\_\_  
MONUMENT DESCRIPTION AND HOW ESTABLISHED \_\_\_\_\_  
\_\_\_\_\_  
\_\_\_\_\_

### CORNERS TO BE INDEXED

CORNER SECTION TOWNSHIP RANGE

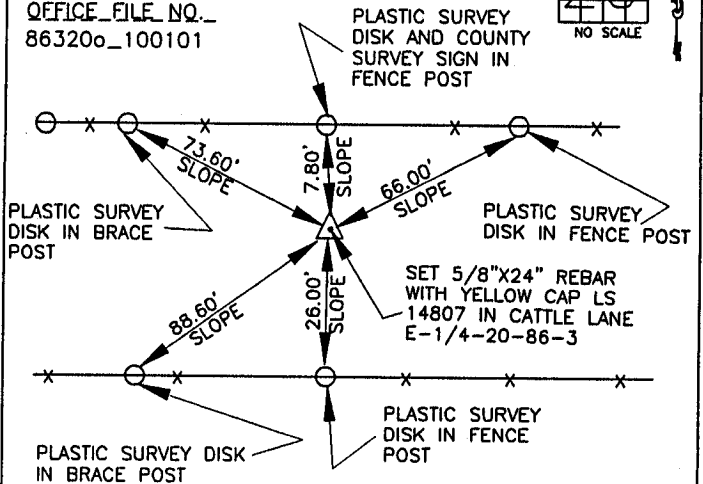
OFFICE FILE NO. \_\_\_\_\_

### CORNERS TO BE INDEXED

CORNER SECTION TOWNSHIP RANGE  
E-QUARTER 20 86N 3W

OFFICE FILE NO. \_\_\_\_\_

86320o\_100101



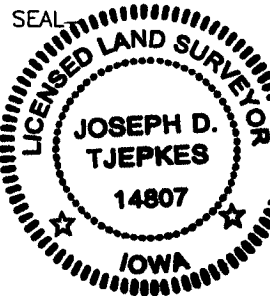
PREVIOUSLY RECORDED IN BOOK \_\_\_\_\_, PAGE \_\_\_\_\_  
MONUMENT DESCRIPTION AND HOW ESTABLISHED \_\_\_\_\_  
\_\_\_\_\_  
\_\_\_\_\_

PREVIOUSLY RECORDED IN BOOK N/A, PAGE NA/  
MONUMENT DESCRIPTION AND HOW ESTABLISHED SET 5/8"X24"  
REBAR WITH YELLOW CAP LS 14807 AT A PROPORTIONATE DISTANCE  
FROM THE SE COR. SEC. 20 TO THE NE COR. SEC. 20. SET  
COUNTY SURVEY SIGN IN FENCE LINE N-OF COR., SET REFERENCE  
POINTS AND TIED OUT AS INDICATED. E-174-20-86-3.

I hereby declare that this plat, survey or report was made by me or under my direct personal supervision and that I am a duly registered Land Surveyor under the laws of the State of Iowa.

Signed: \_\_\_\_\_

Joseph D. Tjepkes L.S. Iowa Reg. No. 14807  
My Registration Renewal Date is December 31, 2002



J.D. Tjepkes LS 14807  
JONES COUNTY  
ENGINEER'S OFFICE

19501 HWY. 64,  
ANAMOSA, IOWA,  
52205 (319)462-3785