

# UNITED STATES PUBLIC LAND SURVEY CORNER CERTIFICATE OF

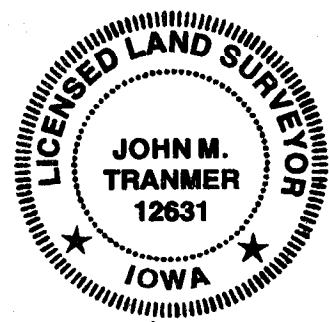
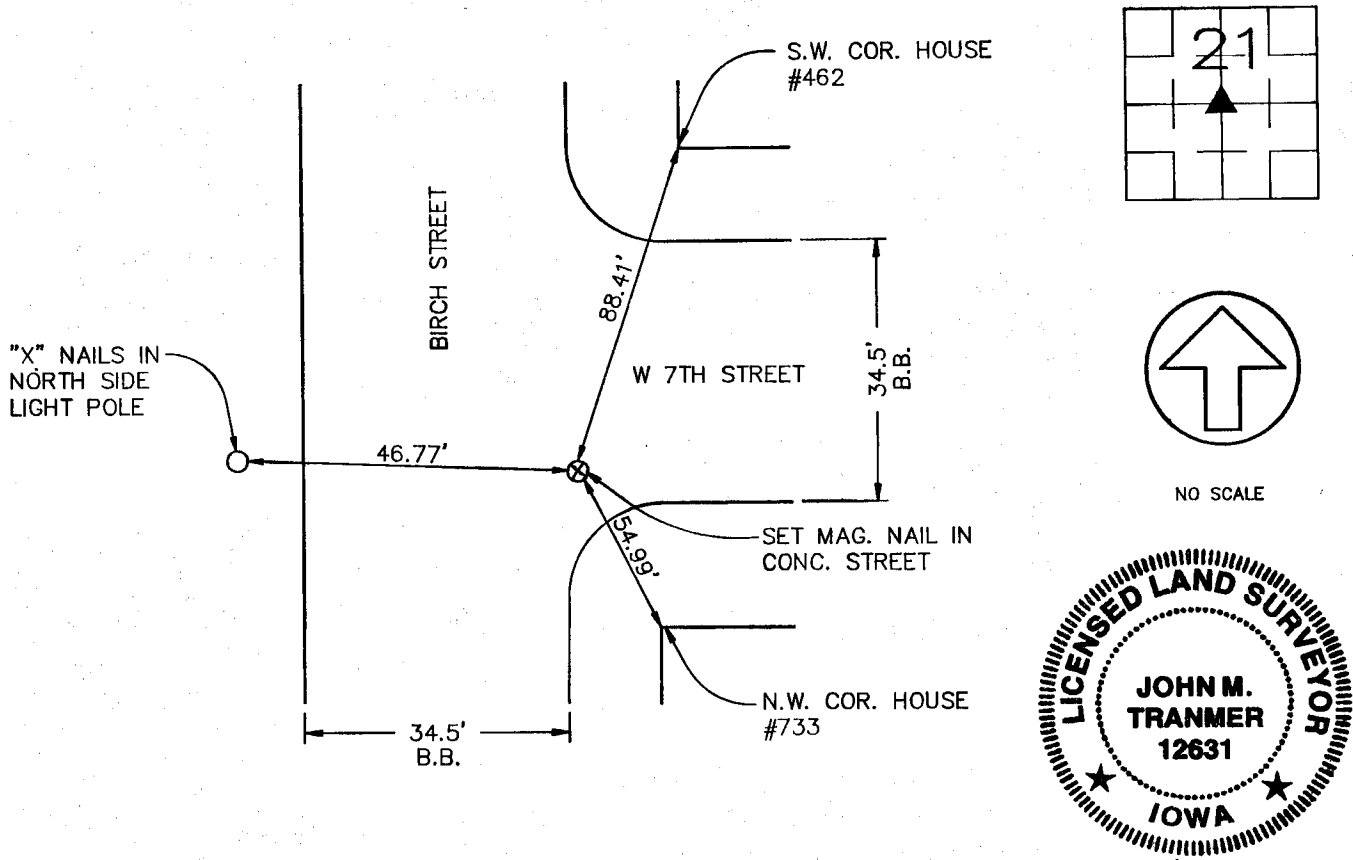
LAND SURVEY MONUMENTS SITUATED IN SECTION 21, TOWNSHIP 86 NORTH, RANGE 3 WEST  
OF THE FIFTH PRINCIPAL MERIDIAN, JONES COUNTY, IOWA.  
PREVIOUSLY RECORDED IN \_\_\_\_\_ IN COUNTY RECORDER'S OFFICE.

(Show reason for preparing this certificate, the evidence and detailed procedures used in establishing the corner positions and monumentation found or placed.)

Monument Description and Remarks: \_\_\_\_\_  
SOUTHEAST CORNER, SE 1/4, NW 1/4, SECTION 21, T86N, R3W - SET MAG. NAIL IN CONC. STREET

## PLAN - VIEW

(Show a minimum of three reference ties to durable physical objects, relevant monuments and physical conditions that will enable recovery of the corner.)



I HEREBY CERTIFY THAT THE SURVEY WORK WAS COMPLETED AND THIS CERTIFICATE WAS PREPARED BY ME OR UNDER MY DIRECT SUPERVISION AND THAT I AM A DULY REGISTERED LAND SURVEYOR UNDER THE LAWS OF THE STATE OF IOWA.

*John M. Tranmer*  
JOHN M. TRANMER REG. NO. 12631  
DATE: 12-6-00  
MY REGISTRATION EXPIRES DECEMBER 31, 2002

LIST CORNERS TO BE INDEXED

CORNERS	SECTION	TWP	RANGE
SE COR.	21	T86N	R3W
SE 1/4, NW 1/4			

<p><b>ENGINEERS AND SURVEYORS P.C.</b></p> <p><small>Iowa, Illinois, Wisconsin 4155 Pennsylvania Ave. Dubuque, Ia. 52002 (319) 556-2464 Guttenberg, IA Galena, IL Cuba City, WI</small></p>	<b>MONUMENT RECORD</b>		
	COUNTY: <u>JONES</u>		INDEX NO.
TOWNSHIP: <u>LOVELL</u>		DATE: <u>11-11-00</u>	PROJ. NO. <u>96068</u>
REVISED:	FIELD BOOK NO. <u>362</u>		