

FEE BOOK: 2009 1927 6/4/2009 11:31 AM  
 REC FEES: \$7.00  
 PAGES: 1

Marie Krutzfield, Recorder  
 Jones County, Iowa

Prepared by Wm. Burger Land Surveyor 510 3rd Street West Court, Worthington, Iowa Phone 563 - 655 2928

**UNITED STATES PUBLIC LAND SURVEY CORNER CERTIFICATE**

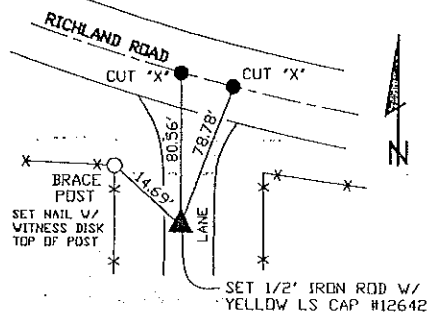
Land Survey Monuments situated in Section 23, Township 86N, Range 3W, of the Fifth Principal Meridian, Jones County, Iowa. Previously recorded in N/A in the Office of the County Recorder

Monument Description and Remarks: (No Corner Certificates found at the County Recorders Office)

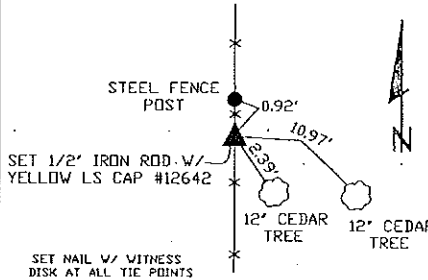
NW CORNER SE1/4 NE1/4 - SET 1/2" IRON ROD W/ YELLOW LS CAP #12642 - USED INFORMATION FROM PLAT RECORDED IN THE OFFICE OF THE JONES COUNTY RECORDER IN PLAT BOOK P, PAGE 142 TO ESTABLISH NORTH-SOUTH LINE AND INTERSECTED WITH A STRAIGHT LINE FROM THE NW CORNER SW1/4 NE1/4 TO THE NE CORNER SE1/4 NE1/4  
 NW CORNER NE1/4 SE1/4 - SET 1/2" IRON ROD W/ YELLOW LS CAP #12642 - SET ON LINE BETWEEN THE CENTER OF SECTION AND THE E1/4 CORNER AND USED EXISTING NORTH-SOUTH FENCE LINE EVIDENCE  
 SW CORNER NE1/4 SE1/4 - SET 1/2" IRON ROD W/ YELLOW LS CAP #12642 - RUN STRAIGHT LINES FROM OPPOSITE 1/4 1/4 CORNERS AND SET AT THE POINT OF INTERSECTION

**PLAN VIEW**

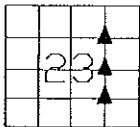
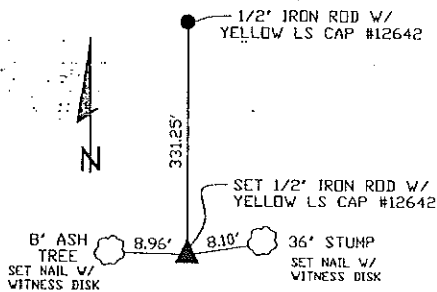
NW CORNER SE1/4 NE1/4



NW CORNER NE1/4 SE1/4



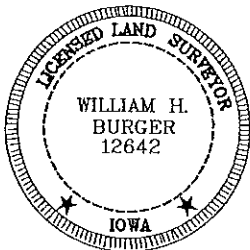
SW CORNER NE1/4 SE1/4



SEC. 23 TWP. 86N RANGE 3W

**CORNERS TO BE INDEXED**

NW CORNER SE1/4 NE1/4	23	86N	3W
NW CORNER NE1/4 SE1/4	23	86N	3W
SW CORNER NE1/4 SE1/4	23	86N	3W



I hereby certify that this land surveying document was prepared and related survey work was performed by me or under my direct personal supervision and that I am a duly licensed Land Surveyor under the laws of the State of Iowa.

*William H. Burger* 6/3/09  
 William H. Burger Date

License number 12642

My license renewal date is December 31, 2010

Pages or Sheets covered by this seal: Sheet 1 of 1