

2004 2472

FILED
RECORDERS OFFICE
JONES COUNTY IOWA

04 JUL -2 PM 2:09

ms

MARIE KRUTZFIELD 7.00 pd

RECORDER

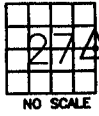
J.D. TJEKES, LS. 14807, 23428 RIDGE ROAD, ANAMOSA, IOWA, 52205 (319-462-6067)

UNITED STATES PUBLIC LAND SURVEY CORNER CERTIFICATE

LAND SURVEY MONUMENTS SITUATED IN SECTION 27, TOWNSHIP 86
NORTH, RANGE 3 WEST OF THE 5TH P.M., JONES COUNTY, IOWA

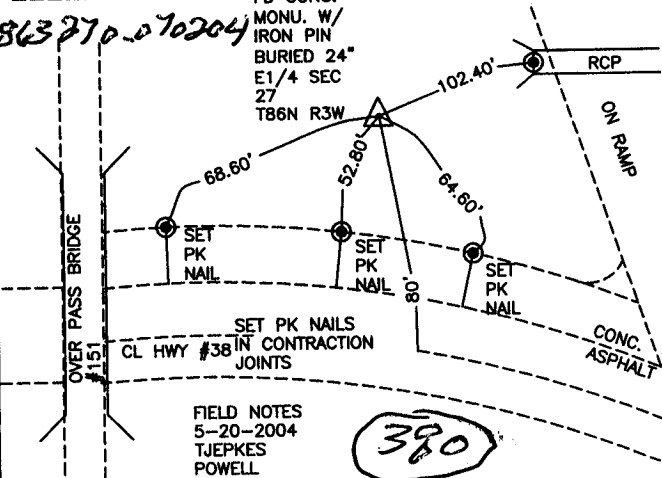
CORNERS TO BE INDEXED

CORNER SECTION TOWNSHIP RANGE
E1/4 COR 27 86N 3W



OFFICE FILE NO. 863270-070204

FD CONC.
MONU. W/
IRON PIN
BURIED 24"
E1/4 SEC
27
T86N R3W

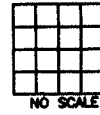


FIELD NOTES
5-20-2004
TJEKES
POWELL

PREVIOUSLY RECORDED IN BOOK 425, PAGE 208
MONUMENT DESCRIPTION AND HOW ESTABLISHED
PER OLD TIES FILED BY DOT & ROAD PLANS FOR HWY #38 IN JONES CO.
ENGINEER'S OFFICE AND PLAT OF SURVEY PARCEL #95-101 RECORDED IN
PLAT BK "L" P 117, FD. CONCRETE MONUMENT WITH 1/2" IRON PIN EAST
OF 151 AND WEST OF NORTH ON RAMP, BURIED 24". SET STEEL POST
ALONG SIDE. RETIED AS INDICATED E1/4 COR. SEC 27 T86N R3W.

CORNERS TO BE INDEXED

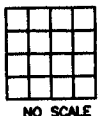
CORNER SECTION TOWNSHIP RANGE
OFFICE FILE NO. _____



PREVIOUSLY RECORDED IN BOOK _____, PAGE _____
MONUMENT DESCRIPTION AND HOW ESTABLISHED _____

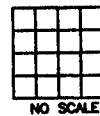
CORNERS TO BE INDEXED

CORNER SECTION TOWNSHIP RANGE
OFFICE FILE NO. _____



CORNERS TO BE INDEXED

CORNER SECTION TOWNSHIP RANGE
OFFICE FILE NO. _____



PREVIOUSLY RECORDED IN BOOK _____, PAGE _____
MONUMENT DESCRIPTION AND HOW ESTABLISHED _____

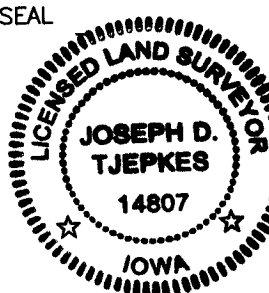
PREVIOUSLY RECORDED IN BOOK _____, PAGE _____
MONUMENT DESCRIPTION AND HOW ESTABLISHED _____

I hereby declare that this plat, survey or report was made by me or under my direct personal supervision and that I am a duly registered Land Surveyor under the laws of the State of Iowa.

Signed: [Signature] 7.02.04

Joseph D. Tjekes L.S. Iowa Reg. No. 14807
My Registration Renewal Date is December 31, 2004

SEAL



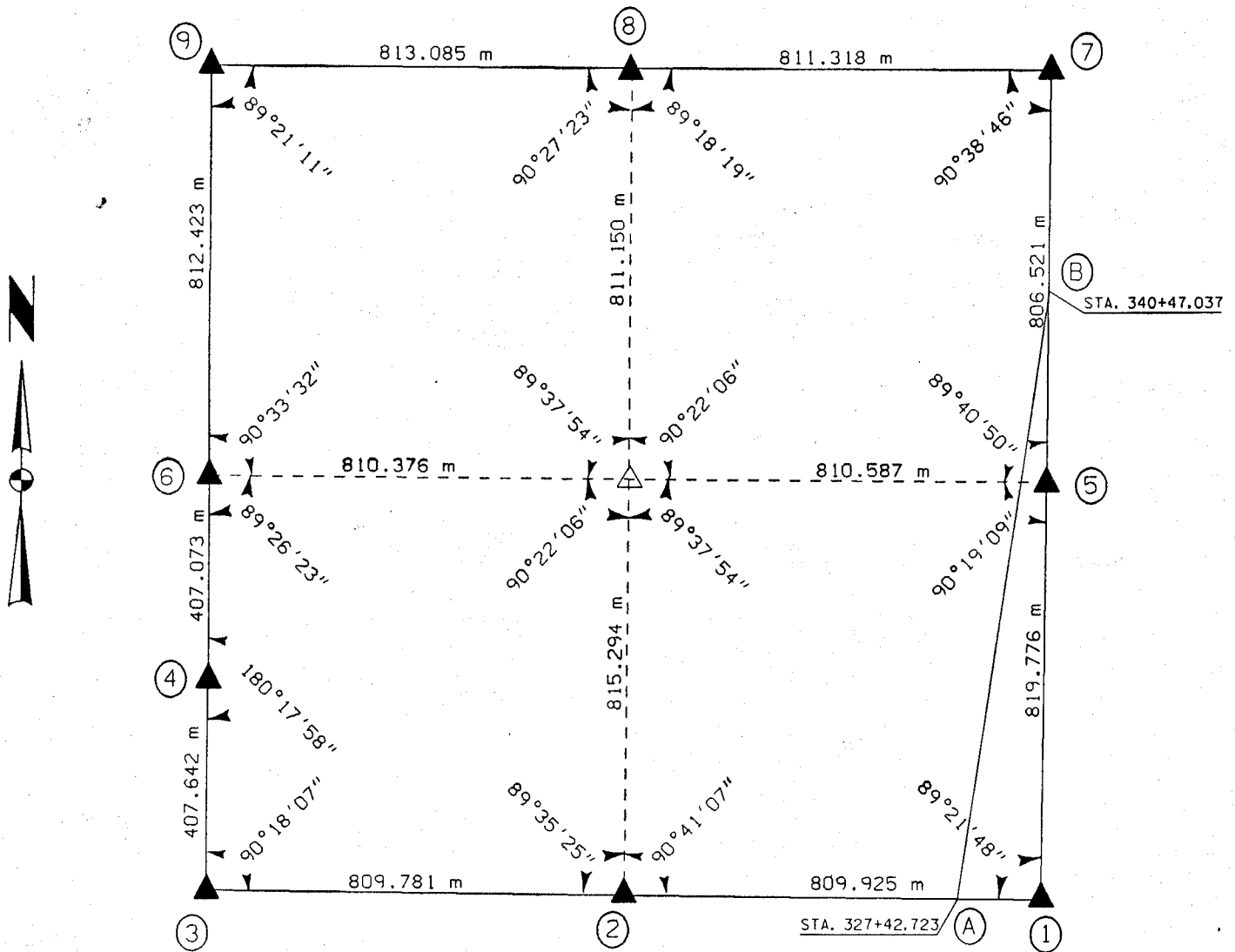
J.D. TJEKES LS 14807
23428 RIDGE ROAD
ANAMOSA, IOWA, 52205
(319-462-3785)

UNITED STATES PUBLIC SECTION CORNER CERTIFICATION
AND LAND CORNER SURVEY
SECTION 27 T-86N R-3W

MADE FOR
IOWA DEPARTMENT OF TRANSPORTATION FOR THE PURPOSE OF
RIGHT OF WAY DESCRIPTIONS ON PRIMARY ROAD No. U.S. 151

MADE BY
MICHAEL R. FOGLE R.L.S. No. 8505
JONES COUNTY, IOWA NHS-151-3(84)--19-57
APRIL 1998 THRU OCTOBER 1998

ALL DISTANCES WERE CAREFULLY MEASURED AND MAY NOT AGREE WITH ROAD SURVEY STATIONING



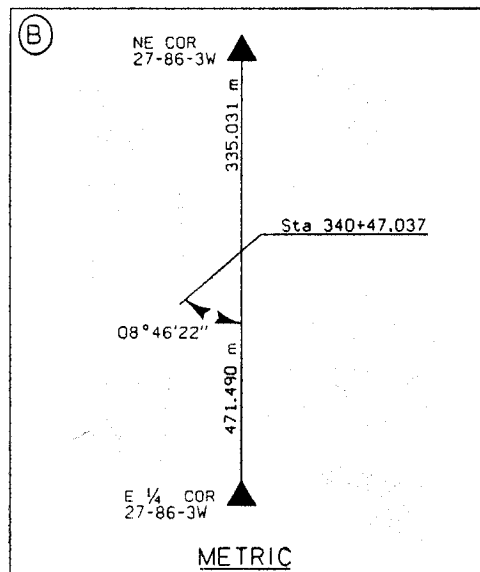
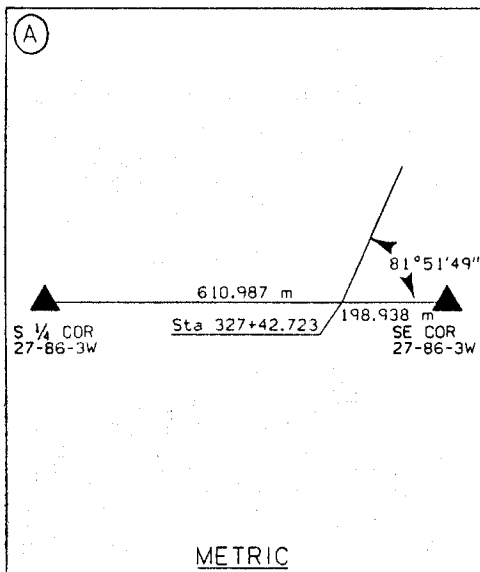
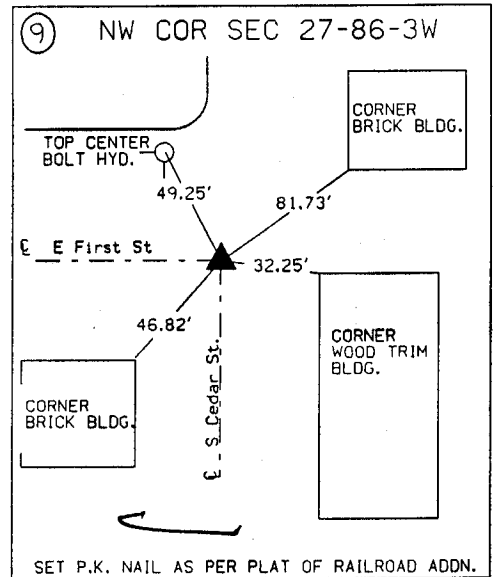
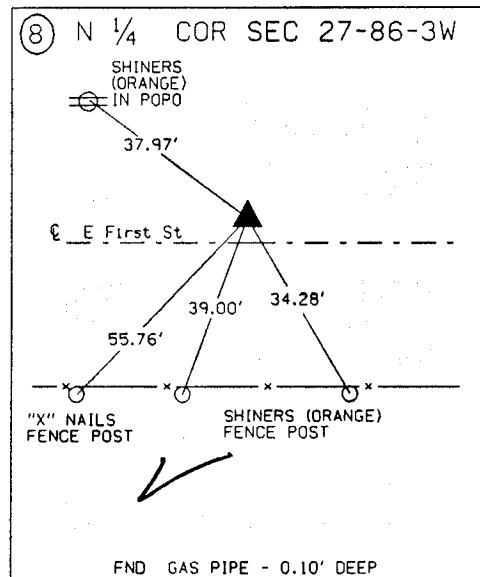
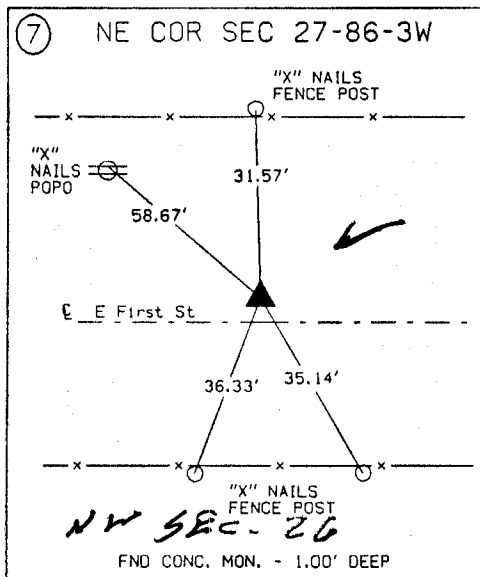
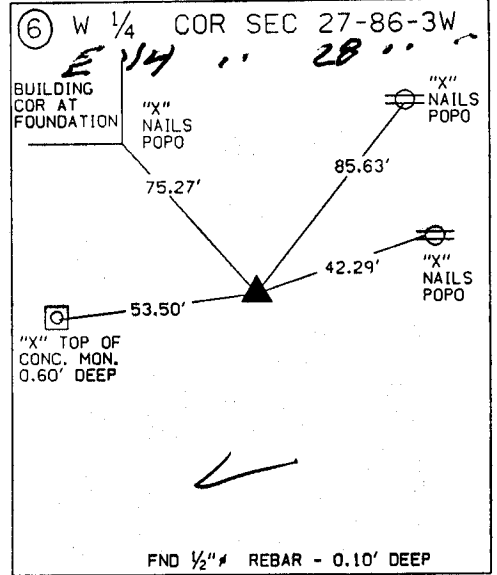
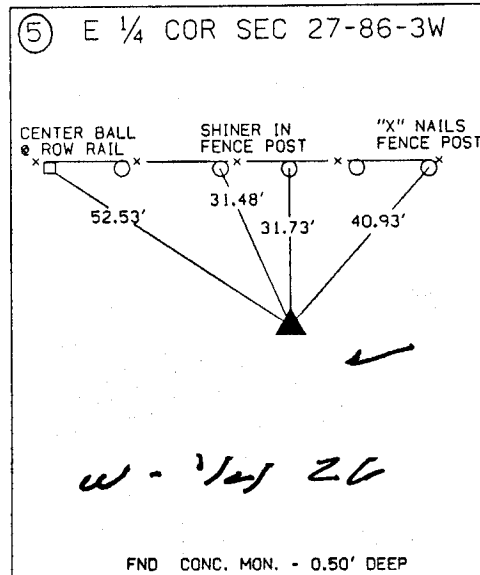
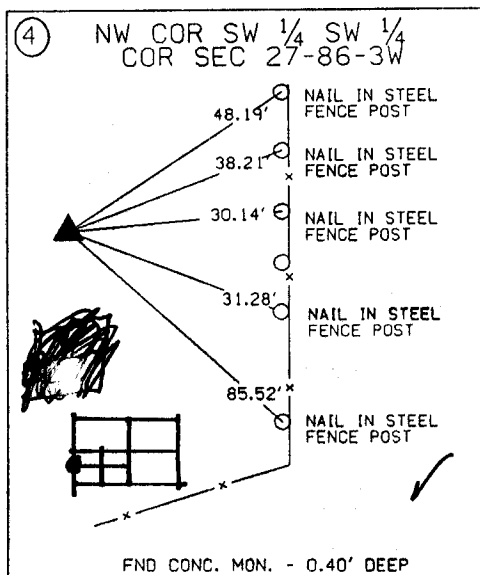
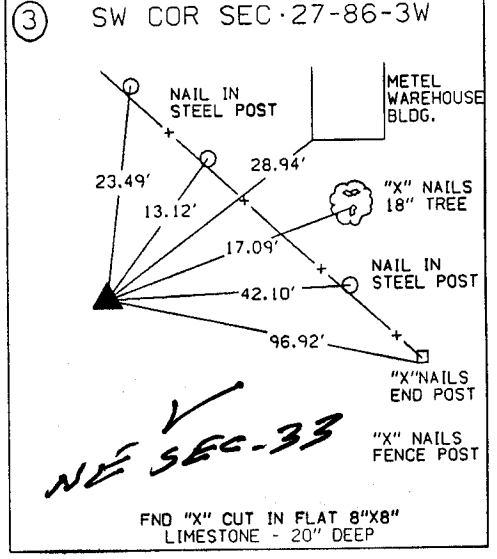
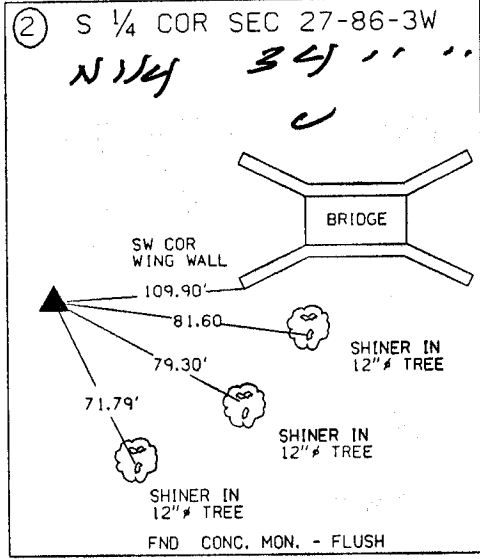
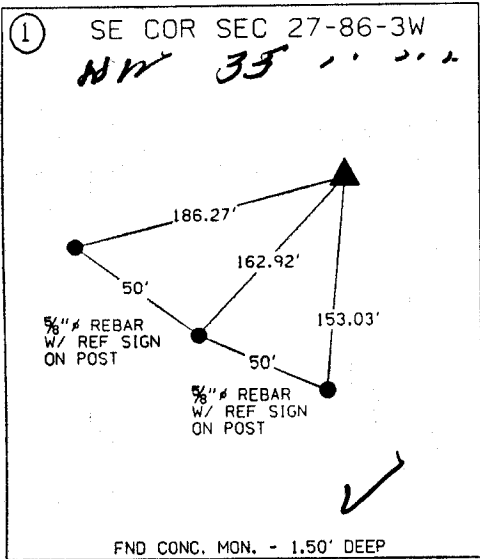
86328e-012199
86327c-012199
86327e-012199
863280-012199
863270-012199
86327f-012199

EARTH TECH

	I hereby certify that this Land Surveying document was prepared by me or under my direct personal supervision and that I am a duly Licensed Land Surveyor under the laws of the State of Iowa.	
	<i>Michael R. Fogle</i>	1-21-99
	MICHAEL R. FOGLE	Date
	License number 8505	
My license renewal date is December 31, 2000		
Pages or sheets covered by this seal:		
<u>Two (2)</u>		

METRIC

UNITED STATES PUBLIC SECTION CORNER CERTIFICATION
AND LAND CORNER SURVEY
SECTION 27 T-86N R-3W



ALL TIES ARE ENGLISH UNLESS OTHERWISE NOTED

Lowell

97 MAY 20 AM 10:06

BOOK 425 PAGE 208
 LINDA J. BENDIXEN
 RECORDER *6.00*

MMS CONSULTANTS INC., 1917 SO. GILBERT ST, IOWA CITY, IA, 52240, PH 319-351-8282

U.S. PUBLIC LAND SURVEY CORNER CERTIFICATE

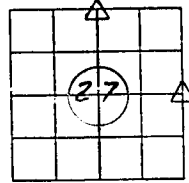
FOR LAND SURVEY MONUMENTS SITUATED IN SECTION 27, TOWNSHIP 86 NORTH,
 RANGE 3 WEST, OF THE FIFTH PRINCIPAL MERIDIAN, JONES, COUNTY, IOWA.

REASON FOR PREPARING CERTIFICATE:

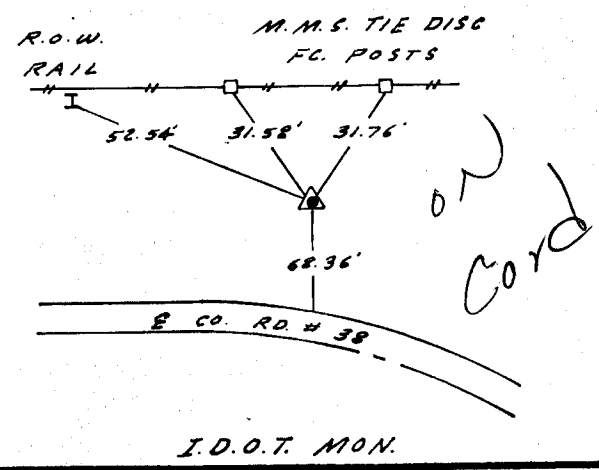
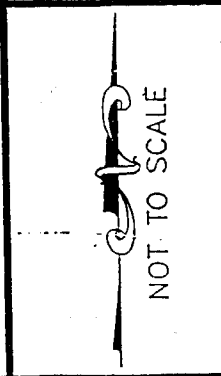
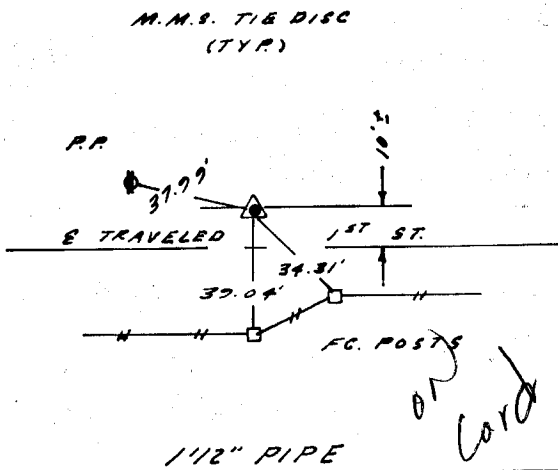
- A) THERE IS NO CERTIFICATE FOR THE CORNER ON FILE WITH THE RECORDER.
 B) CORNER FOUND DIFFERS FROM PREVIOUSLY RECORDED CERTIFICATE RECORDED IN BOOK , AT PAGE .

RECOVERY TIE DRAWING

N. 1/4 COR. 27-86-3



E. 1/4 COR. 27-86-3



MONUMENT DESCRIPTION AND REMARKS :
 N. 1/4 COR. FOUND 1 1/2" PIPE 0.2' DEEP

MONUMENT DESCRIPTION AND REMARKS :
 E. 1/4 COR. FOUND I.D.O.T. MON.
 0.8' DEEP

I HEREBY CERTIFY THAT THE CORNER LOCATION(S) SHOWN ON THIS RECORD WERE DETERMINED BY ME OR UNDER MY DIRECT PERSONAL SUPERVISION AND THAT THIS U.S. PUBLIC LAND SURVEY MONUMENT RECORD IS CORRECT AND COMPLETE TO THE BEST OF MY KNOWLEDGE AND BELIEF.

Glen D. Meisner 5-19-97
 GLEN D. MEISNER, PE & LS IA. REG. NO. 8165 DATE
 MY BIENNIAL RENEWAL DATE IS DECEMBER 31, 1997



ORIGINAL ▲ GOVERNMENT CORNER ○ 5/8" TIE PIN SET --- CENTERLINE - - - EXISTING FENCE LINE - - - R.O.W. LINE	SHEET TITLE: U.S. PUBLIC LAND SURVEY CORNER CERTIFICATE	MMS CONSULTANTS, INC. Iowa City, Iowa 319-351-8282
	PROJECT TITLE: STEPHENS	
NWD G.L.R.	KEG G.D.M.	AP G.D.M.
DATE: 4-20-97	SCALE: NONE	FILE NO: 459 PROJ NO: 4897-001