

2003 08 50

FILED
RECORDERS OFFICE
JONES COUNTY IOWA

03 FEB 27 PM 12:14

MARIE KRUTZFIELD
RECORDER 6.00Pd

TeKIPPE ENGINEERING, P.C., 128 South Vine Street, West Union, Iowa 52175 Phone (563) 422-5131

UNITED STATES PUBLIC LAND SURVEY CORNER CERTIFICATE

OF

Land Survey Monuments situated in Section 27, Township 86 North, Range 3 West of the Fifth Principal Meridian, JONES County, Iowa. Previously recorded in (1) none (2) Book 425, Page 208 in County Recorder's Office.
(book, page, document number, etc.)

(Show reason for preparing this certificate, the evidence and detailed procedures used in establishing the corner positions and monumentation found or placed.)

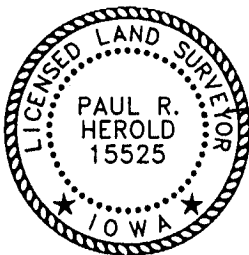
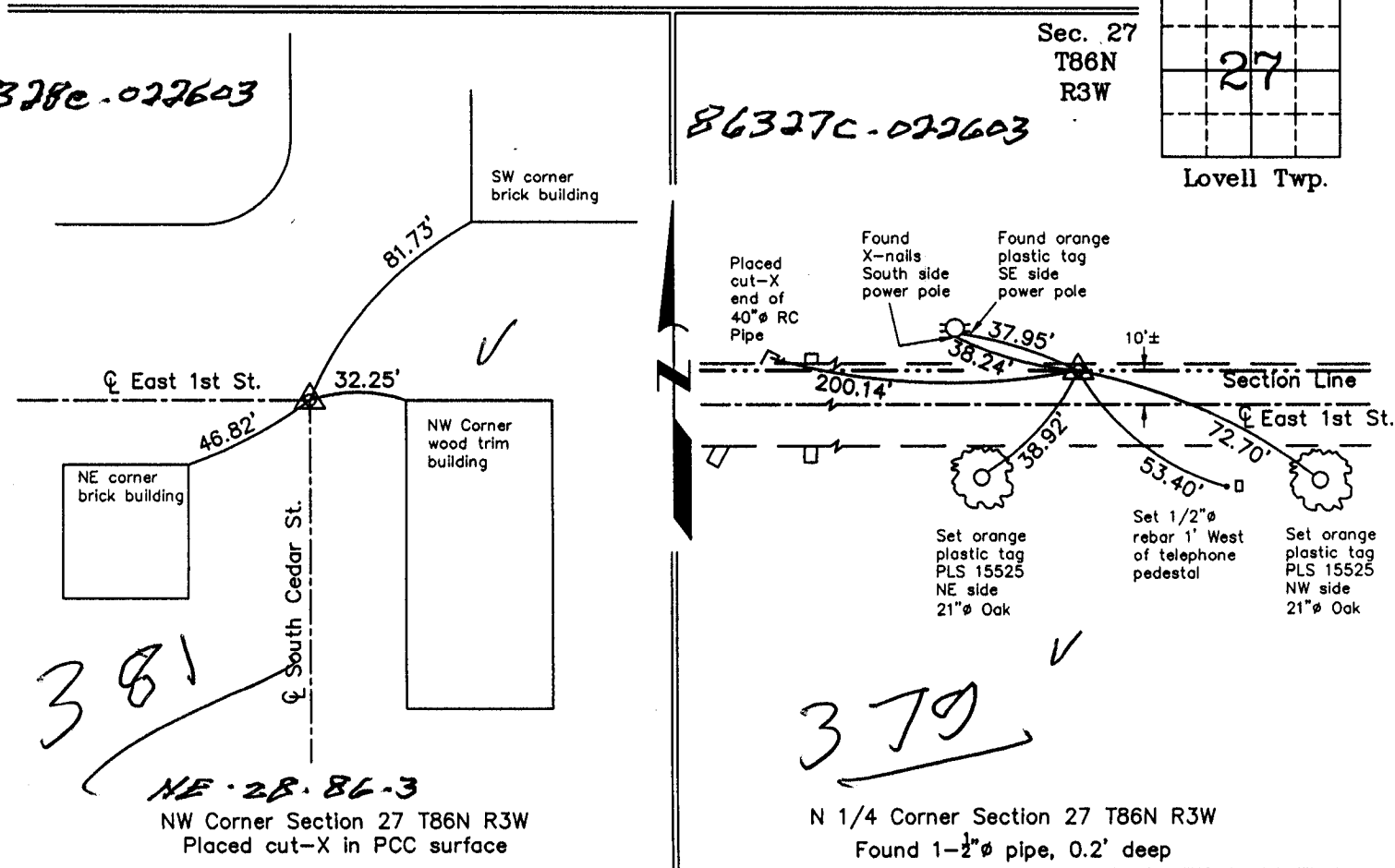
Monument Description and Remarks: (1) NW Corner Section 27 T86N R3W: Placed cut-X in PCC surface using reference ties obtained from Section Corner Certification and Land Corner Survey made by Michael R. Fagle for Jones County Project, U.S. Hwy. 151, NHS-151-3(84)--19-57.

(2) N 1/4 Corner Section 27 T86N R3W: Found 1-1/2"Ø pipe with information obtained from the previous Section Corner Certificate recorded in the Jones County Recorder's Office May 20, 1997 in Book 425, Page 208. Two reference ties were missing. Four reference ties were added.

PLAN - VIEW

Project Number 03602.LS
FB. 16D PG. 53-57

(Show a minimum of three reference ties to durable physical objects, relevant monuments and physical conditions that will enable recovery of the corner.)



I hereby certify that this land surveying document was prepared and the related survey work was performed by me or under my direct personal supervision and that I am a duly licensed Land Surveyor under the laws of the State of Iowa.

Paul R. Herold 2-26-03
Paul R. Herold Date

License number 15525
My license renewal date is December 31, 2004.
Sheets covered by this seal: Individual

List Corners to be Indexed			
Corners	Section	Twp.	Range
NW	27	86N	3W
N 1/4	27	86N	3W

X:\Section Corners\Sec. 27\27-86-3ac.dwg

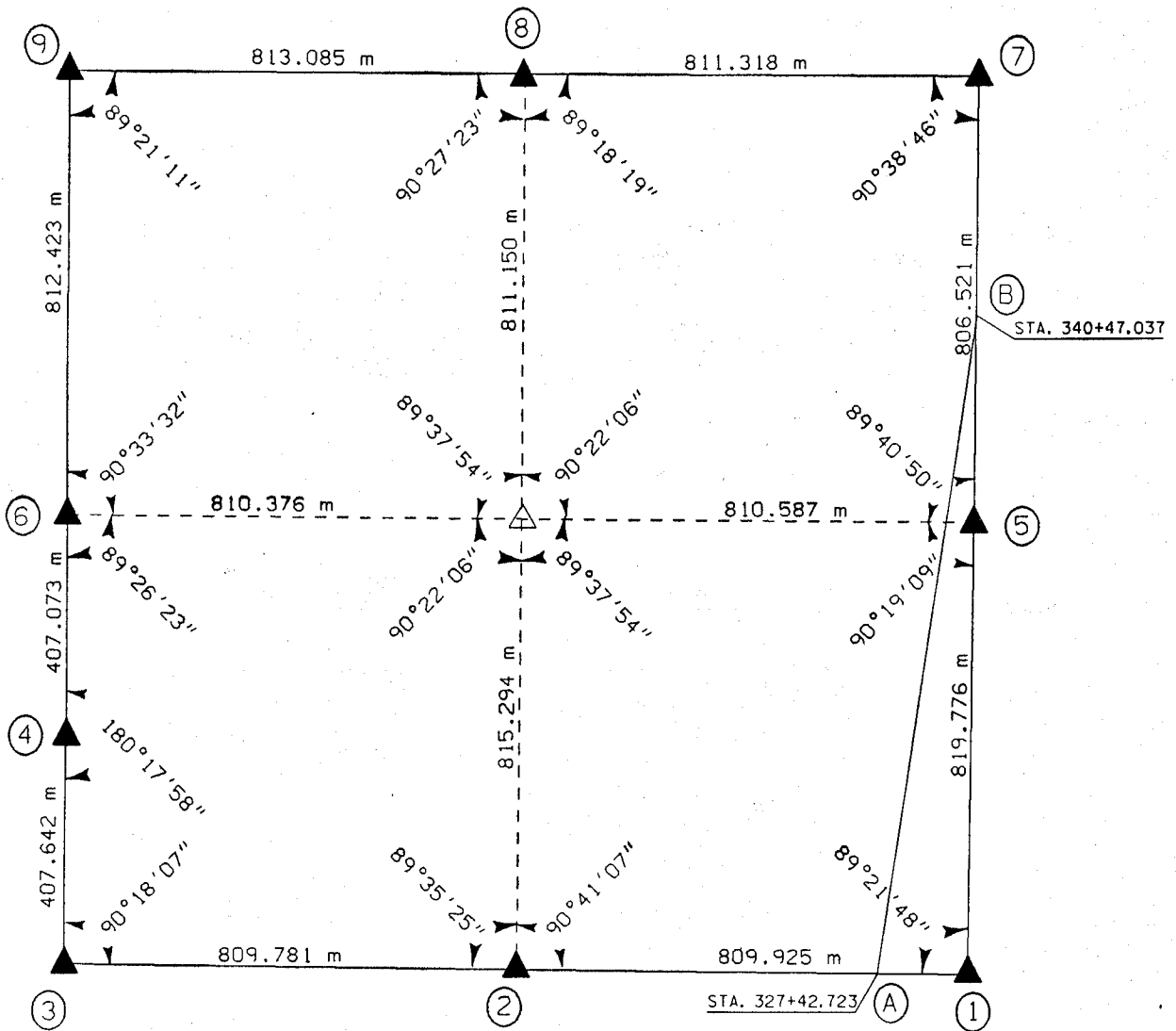
County Engineer's Copy

UNITED STATES PUBLIC SECTION CORNER CERTIFICATION
AND LAND CORNER SURVEY
SECTION 27 T-86N R-3W

MADE FOR
IOWA DEPARTMENT OF TRANSPORTATION FOR THE PURPOSE OF
RIGHT OF WAY DESCRIPTIONS ON PRIMARY ROAD No. U.S. 151

MADE BY
MICHAEL R. FOGLE R.L.S. No. 8505
JONES COUNTY, IOWA NHS-151-3(84)--19-57
APRIL 1998 THRU OCTOBER 1998

ALL DISTANCES WERE CAREFULLY MEASURED AND MAY NOT AGREE WITH ROAD SURVEY STATIONING



86328e-012199
86327c-012199
86327e-012199
863280-012199
863270-012199
86327f-012199

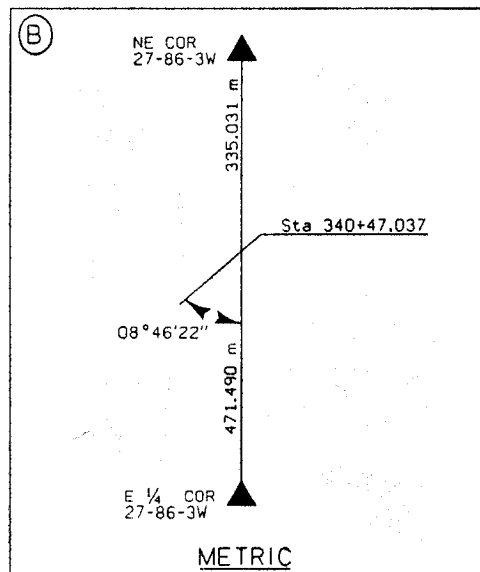
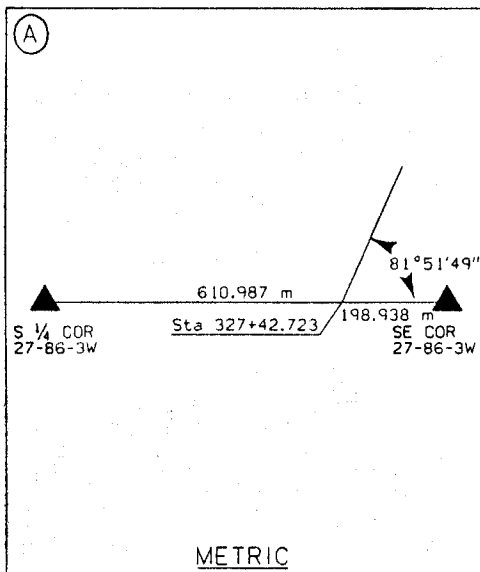
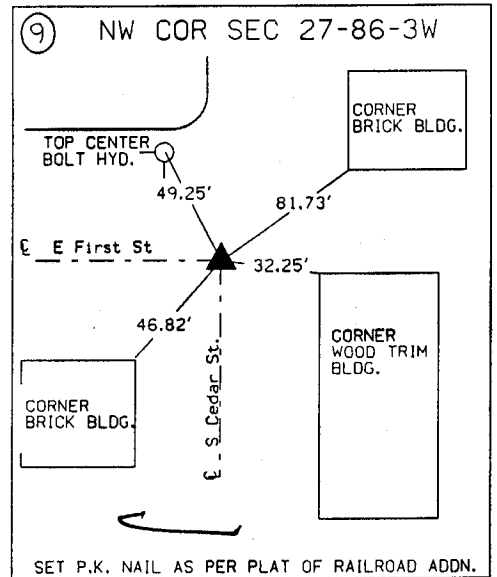
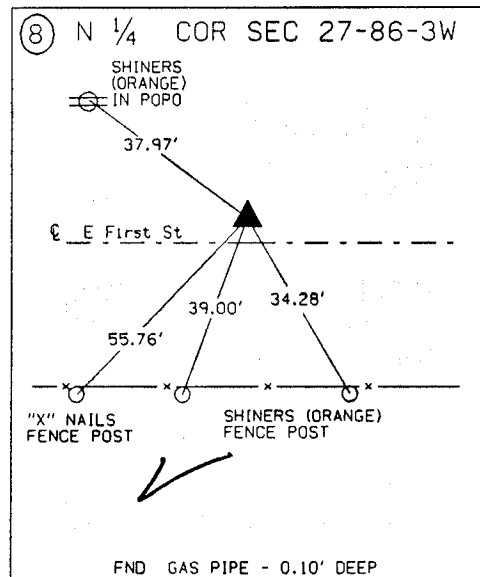
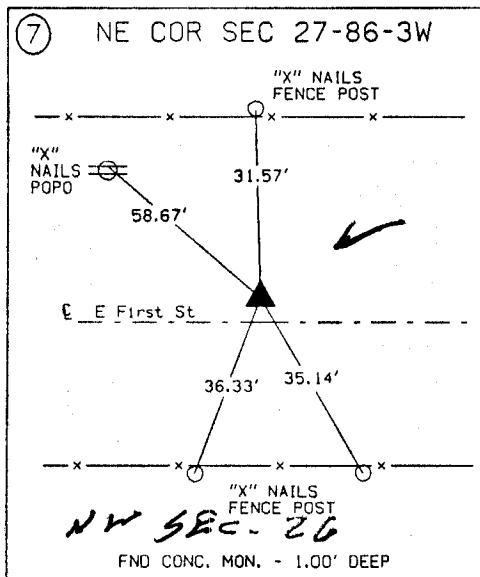
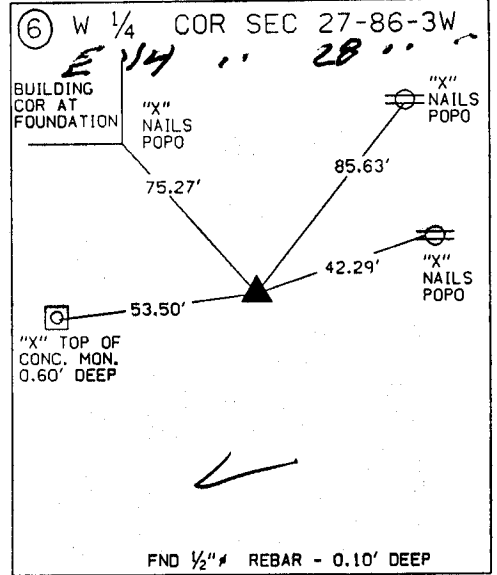
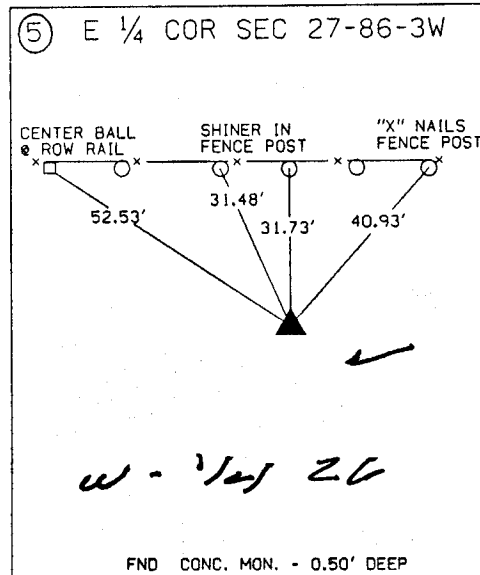
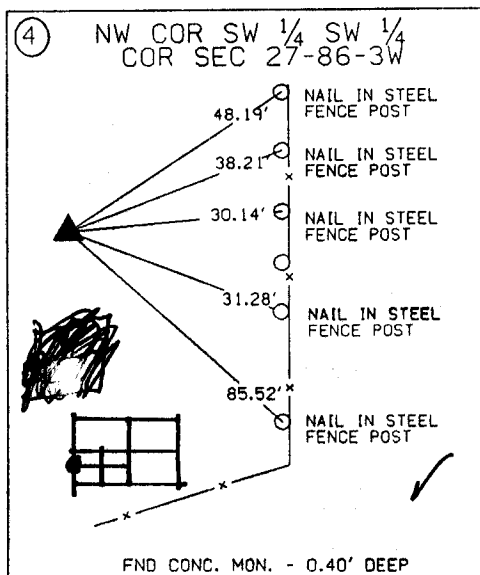
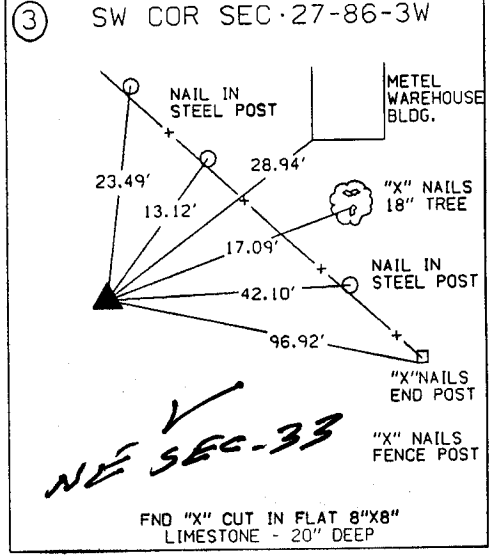
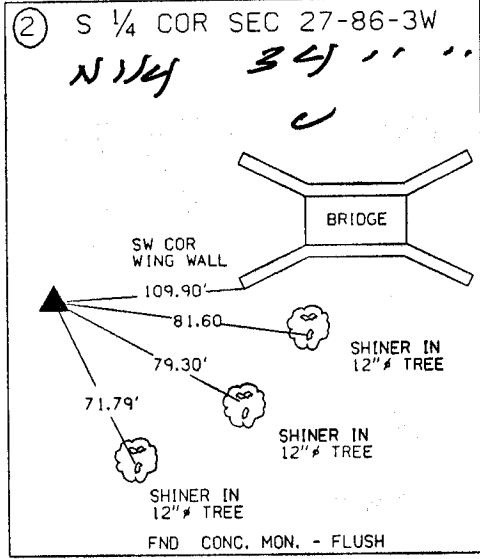
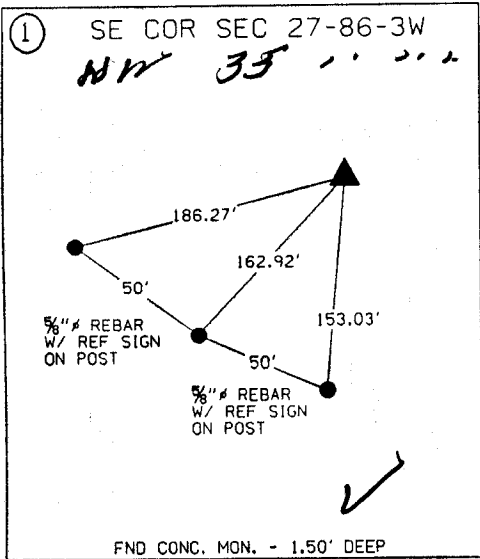
EARTH TECH



	I hereby certify that this Land Surveying document was prepared by me or under my direct personal supervision and that I am a duly Licensed Land Surveyor under the laws of the State of Iowa. <u>Michael R. Fogle</u> 1-21-99 MICHAEL R. FOGLE Date
	License number 8505
	My license renewal date is December 31, 2000
	Pages or sheets covered by this seal: <u>Two (2)</u>

METRIC

UNITED STATES PUBLIC SECTION CORNER CERTIFICATION
AND LAND CORNER SURVEY
SECTION 27 T-86N R-3W



ALL TIES ARE ENGLISH UNLESS OTHERWISE NOTED

Lowell

97 MAY 20 AM 10:06

BOOK 425 PAGE 208
 LINDA J. BENDIXEN
 RECORDER *6.00*

MMS CONSULTANTS INC., 1917 SO. GILBERT ST, IOWA CITY, IA, 52240, PH 319-351-8282

U.S. PUBLIC LAND SURVEY CORNER CERTIFICATE

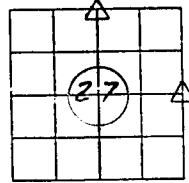
FOR LAND SURVEY MONUMENTS SITUATED IN SECTION 27, TOWNSHIP 86 NORTH,
 RANGE 3 WEST, OF THE FIFTH PRINCIPAL MERIDIAN, JONES, COUNTY, IOWA.

REASON FOR PREPARING CERTIFICATE:

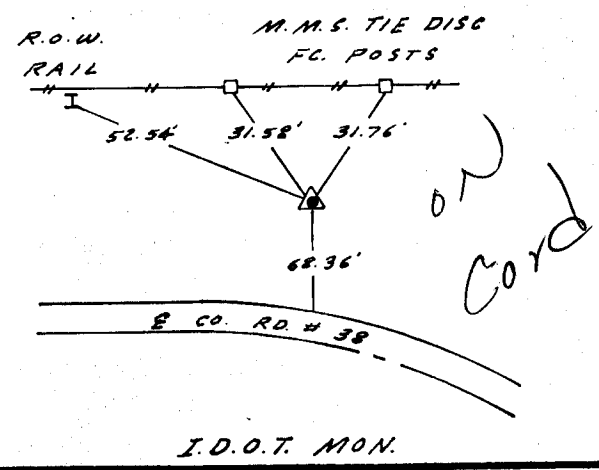
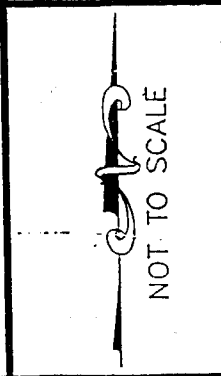
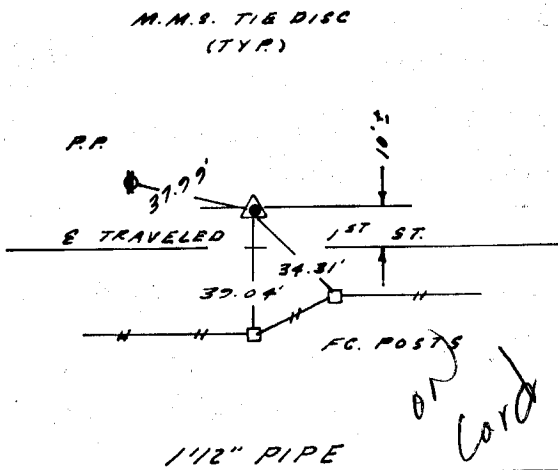
- A) THERE IS NO CERTIFICATE FOR THE CORNER ON FILE WITH THE RECORDER.
 B) CORNER FOUND DIFFERS FROM PREVIOUSLY RECORDED CERTIFICATE RECORDED IN BOOK , AT PAGE .

RECOVERY TIE DRAWING

N. 1/4 COR. 27-86-3



E. 1/4 COR. 27-86-3



MONUMENT DESCRIPTION AND REMARKS :
 N. 1/4 COR. FOUND 1 1/2" PIPE 0.2' DEEP

MONUMENT DESCRIPTION AND REMARKS :
 E. 1/4 COR. FOUND I.D.O.T. MON.
 0.8' DEEP

I HEREBY CERTIFY THAT THE CORNER LOCATION(S) SHOWN ON THIS RECORD WERE DETERMINED BY ME OR UNDER MY DIRECT PERSONAL SUPERVISION AND THAT THIS U.S. PUBLIC LAND SURVEY MONUMENT RECORD IS CORRECT AND COMPLETE TO THE BEST OF MY KNOWLEDGE AND BELIEF.



Glen D. Meisner 5-19-97
 GLEN D. MEISNER, PE & LS IA. REG. NO. 8165 DATE
 MY BIENNIAL RENEWAL DATE IS DECEMBER 31, 1997

ORIGINAL ▲ GOVERNMENT CORNER ○ 5/8" TIE PIN SET --- CENTERLINE - - - EXISTING FENCE LINE - - - R.O.W. LINE	SHEET TITLE: U.S. PUBLIC LAND SURVEY CORNER CERTIFICATE	MMS MMS CONSULTANTS, INC. Iowa City, Iowa 319-351-8282
	PROJECT TITLE: STEPHENS	
NWD G.L.R.	KEG G.D.M.	AFB G.D.M.
DATE: 4-20-97	SCALE: NONE	F# 459 P# 4897-001