

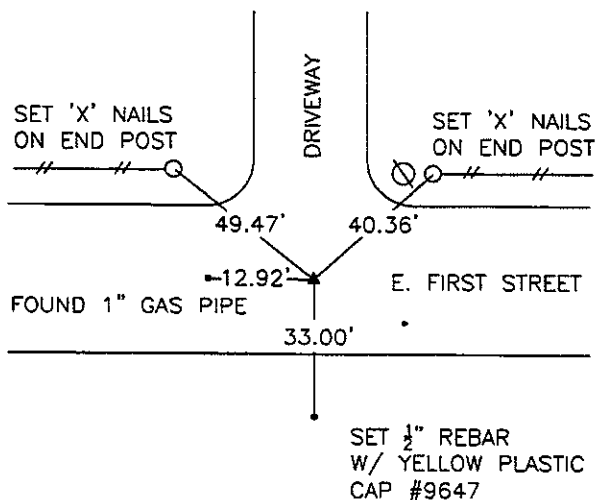
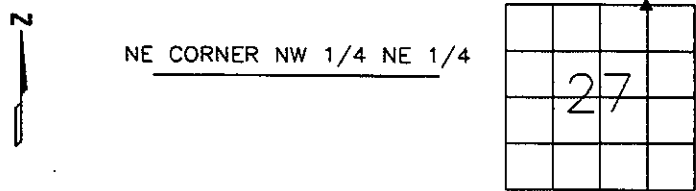
Jones County Marie Krutzfield Recorder
 Fee Book 2012 3594
 12/05/2012 @1021AM # Pages 1
 ZSC SEC COR CERT
 Total Fees: \$7.00

PREPARED BY
 STEPHEN MICHAEL BRAIN, BRAIN ENGINEERING, INC., 1540 MIDLAND COURT NE, CEDAR RAPIDS, IOWA PH. (319) 294-9424

UNITED STATES PUBLIC LAND SURVEY CORNER CERTIFICATE

LAND SURVEY MONUMENTS SITUATED IN SECTION 27, TOWNSHIP 86 NORTH
 RANGE 3 WEST OF THE 5TH P.M., JONES COUNTY, IOWA.

NO SCALE



NO SCALE



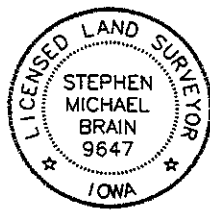
PREVIOUSLY RECORDED IN BOOK _____ PAGE _____

MONUMENT DESCRIPTION AND HOW ESTABLISHED _____

SET MAG NAIL IN THE CENTERLINE OF E. FIRST STREET
 AT THE MIDPOINT ON THE LINE BETWEEN THE N 1/4
 CORNER AND THE NE CORNER OF SECTION 27.

PREVIOUSLY RECORDED IN BOOK _____ PAGE _____

MONUMENT DESCRIPTION AND HOW ESTABLISHED _____



I hereby certify that this land surveying document
 and the related survey work was performed by me
 or under my direct personal supervision and that
 I am a duly licensed Land Surveyor under the laws
 of the State of Iowa.
 Signed _____ Date 12/3/12

Stephen Michael Brain, L.S.
 My License Renewal Date is December 31, 2012
 License Number 9647
 Pages or sheets covered by this seal: 1/1

- A.THERE IS NO CERTIFICATE FOR THE CORNER ON FILE WITH THE RECORDER OF THE COUNTY IN WHICH THE CORNER IS LOCATED
- B.THE SURVEYOR IN RESPONSIBLE CHARGE OF THE LAND SURVEYING ACCEPTS A CORNER POSITION WHICH DIFFERS FROM THAT SHOWN IN THE PUBLIC RECORDS OF THE COUNTY IN WHICH THE CORNER IS LOCATED.
- C.THE CORNER MONUMENT IS REPLACED OR MODIFIED IN ANY WAY.
- D.THE REFERENCE TIES REFERRED TO IN AN EXISTING PUBLIC RECORD ARE NOT CORRECT.

CORNERS TO BE INDEXED

CORNER	SECTION	TOWNSHIP	RANGE
NE CORNER	27	T86N	R3 W
NW 1/4 NE 1/4			

BRAIN ENGINEERING, INC.

1540 MIDLAND COURT NE
 CEDAR RAPIDS, IOWA 52402 459312-10
 (319) 294-8424