

2001 3974

FILED  
RECORDERS OFFICE  
JONES COUNTY IOWA

01 NOV 16 PM 12:03

MARIE KRUTZFIELD  
RECORDER No Fee

863280-102401

ID # 1039

86328t-102401

ID # 384

J.D. TJEKES, LS. JONES COUNTY ENGINEER'S OFFICE, 19501 HWY. 64, ANAMOSA, IOWA, 52205 (319)462-3785

# UNITED STATES PUBLIC LAND SURVEY CORNER CERTIFICATE

LAND SURVEY MONUMENTS SITUATED IN SECTION 28, TOWNSHIP 86  
NORTH, RANGE 3 WEST OF THE 5TH P.M., JONES COUNTY, IOWA

**CORNERS TO BE INDEXED**

CORNER	SECTION	TOWNSHIP	RANGE
EAST QUARTER	28	86N	3W

OFFICE FILE NO. 863280-102301

Diagram details: COR. BLDG. FOUNDATION, L.P. TANKS, 75.27', 85.63', ENTRY, CEDAR STREET, 42.29', SET 5/8"x24" REBAR W/YELLOW CAP LS 14807 EAST 1/4, 28-86-3, FD. X-NAILS POWER POLE.

PREVIOUSLY RECORDED IN BOOK 1999, PAGE 0324  
MONUMENT DESCRIPTION AND HOW ESTABLISHED FOUND 1/2" BENT REBAR LYING ON GROUND AT LOCATION OF CROSSING TIES FURNISHED TO JONES COUNTY ENGINEER BY MIKE FAGLE. SET 5/8" 24" REBAR W/YELLOW CAP LS 14807 AT TIE LOCATION AND TIED OUT AS INDICATED. EAST QUARTER CORNER SECTION 28, T86N, R3W, 5TH P.M., JONES COUNTY, IOWA.

**CORNERS TO BE INDEXED**

CORNER	SECTION	TOWNSHIP	RANGE
NORTHEAST	28	86N	3W

OFFICE FILE NO. 86328t-102301

Diagram details: OLD R.R. PROP., OLD STRUCTURE, SET PLASTIC SURVEY DISK IN POWER POLE, JONES COUNTY SURVEY SIGN, SET PLASTIC SURVEY DISK IN POWER POLE, FOUND X-NAILS IN FENCE POST, 270.86', 26.49', 131.92', 93.05', 256.48', SET PLASTIC SURVEY DISK IN POWER POLE.

PREVIOUSLY RECORDED IN BOOK 310, PAGE 63  
MONUMENT DESCRIPTION AND HOW ESTABLISHED FOUND CONC. MONUMENT 3" BELOW SURFACE IN CORN FIELD PER TIES FURNISHED BY MIKE FAGLE. SET 5/8"x48" REBAR WITH MAGNET ALONGSIDE CONCRETE MONUMENT. PUSHED TOP OF REBAR DOWN TO WITHIN 2' OF SURFACE. SET REFERENCE POINTS AND TIED OUT AS INDICATED. NORTHEAST CORNER, SOUTHEAST QUARTER, SOUTHEAST QUARTER, SECTION 28, TOWNSHIP 86 NORTH, RANGE 3 WEST, 5TH PRINCIPAL MERIDIAN, JONES COUNTY, IOWA.

**CORNERS TO BE INDEXED**

CORNER	SECTION	TOWNSHIP	RANGE

OFFICE FILE NO. \_\_\_\_\_

PREVIOUSLY RECORDED IN BOOK \_\_\_\_\_, PAGE \_\_\_\_\_  
MONUMENT DESCRIPTION AND HOW ESTABLISHED \_\_\_\_\_

**CORNERS TO BE INDEXED**

CORNER	SECTION	TOWNSHIP	RANGE

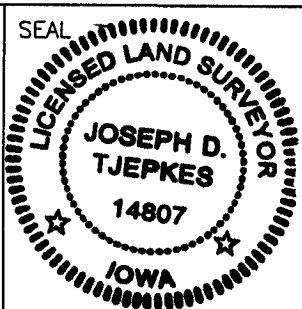
OFFICE FILE NO. \_\_\_\_\_

PREVIOUSLY RECORDED IN BOOK \_\_\_\_\_, PAGE \_\_\_\_\_  
MONUMENT DESCRIPTION AND HOW ESTABLISHED \_\_\_\_\_

I hereby declare that this plat, survey or report was made by me or under my direct personal supervision and that I am a duly registered Land Surveyor under the laws of the State of Iowa.

Signed: *[Signature]*

Joseph D. Tjepkes L.S. Iowa Reg. No. 14807  
My Registration Renewal Date is December 31, 2002



J.D. TJEKES LS 14807  
JONES COUNTY  
ENGINEER'S OFFICE

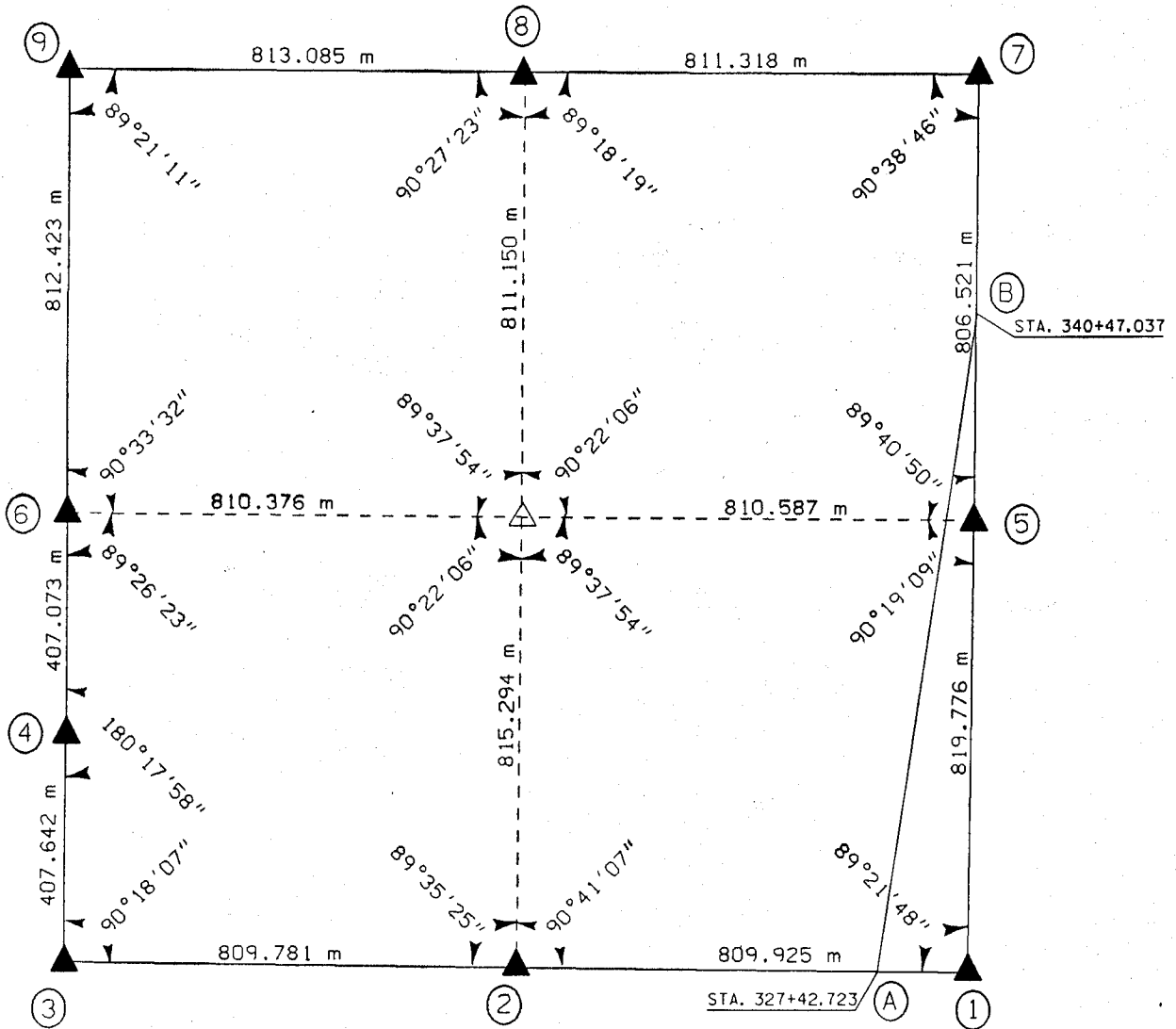
19501 HWY. 64,  
ANAMOSA, IOWA,  
52205 (319)462-3785

UNITED STATES PUBLIC SECTION CORNER CERTIFICATION  
AND LAND CORNER SURVEY  
SECTION 27 T-86N R-3W

MADE FOR  
IOWA DEPARTMENT OF TRANSPORTATION FOR THE PURPOSE OF  
RIGHT OF WAY DESCRIPTIONS ON PRIMARY ROAD No. U.S. 151

MADE BY  
MICHAEL R. FOGLE R.L.S. No. 8505  
JONES COUNTY, IOWA NHS-151-3(84)--19-57  
APRIL 1998 THRU OCTOBER 1998

ALL DISTANCES WERE CAREFULLY MEASURED AND MAY NOT AGREE WITH ROAD SURVEY STATIONING



86328e-012199  
86327c-012199  
86327e-012199  
863280-012199  
863270-012199  
86327f-012199

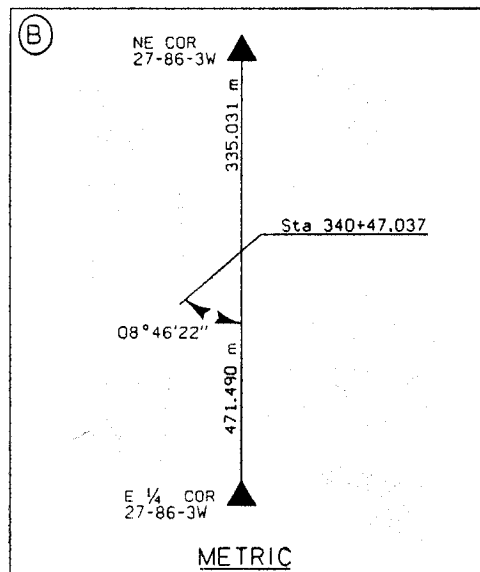
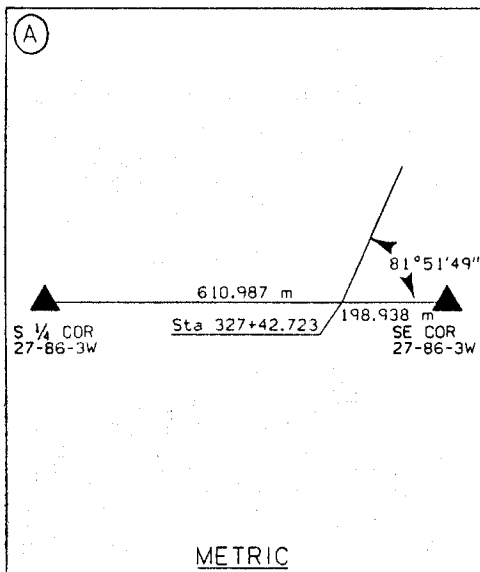
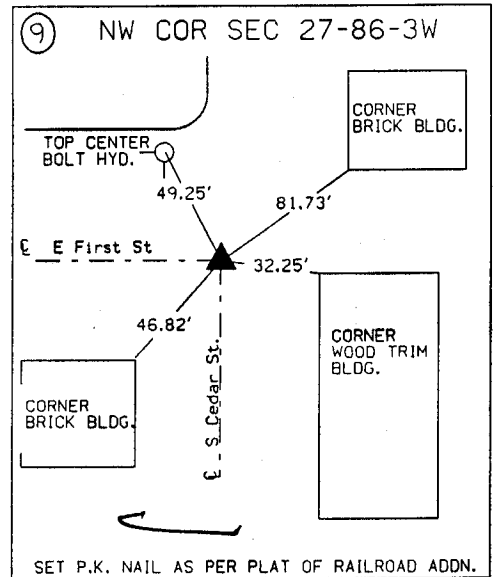
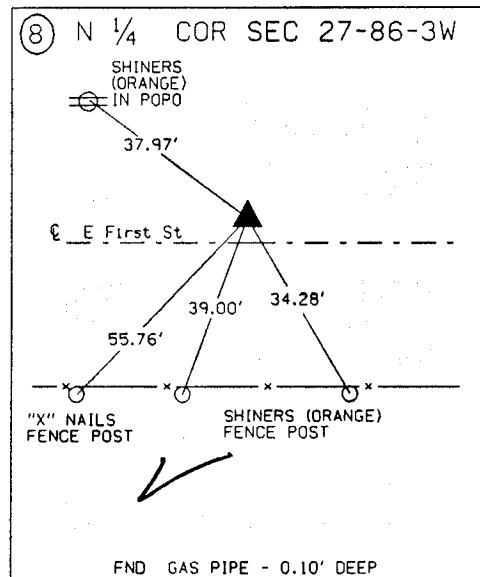
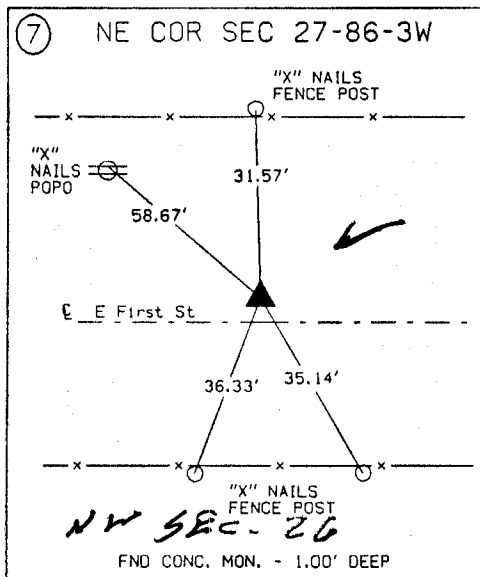
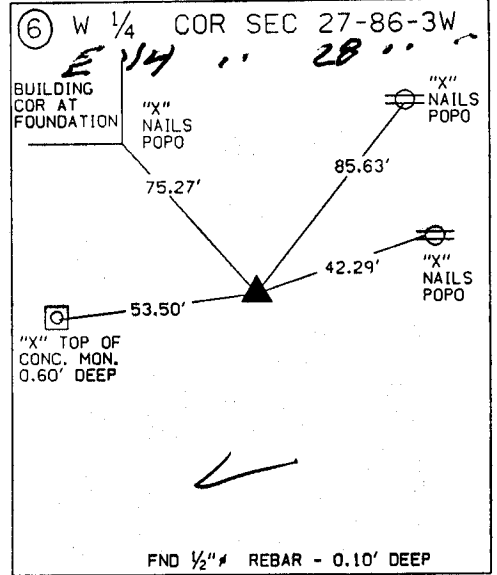
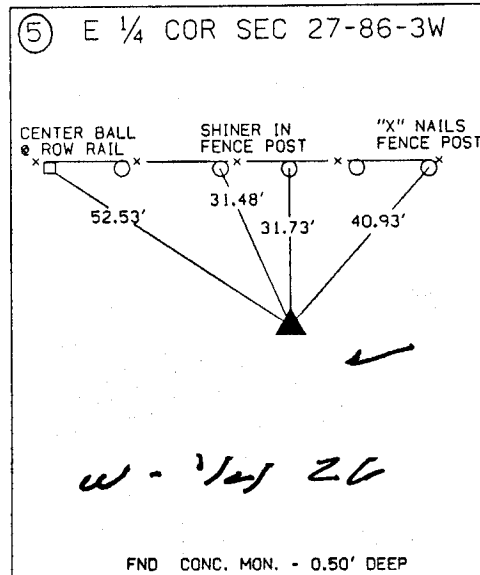
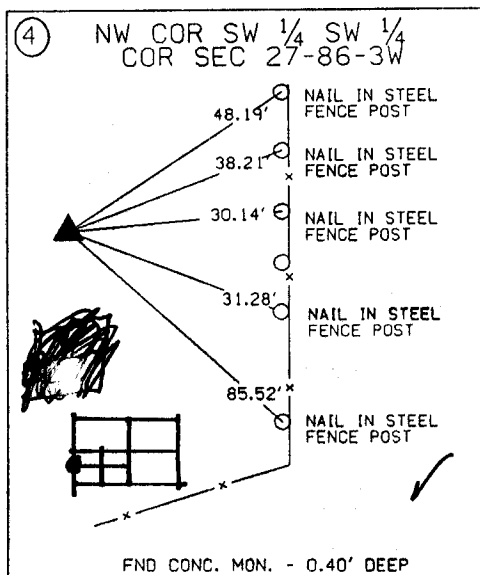
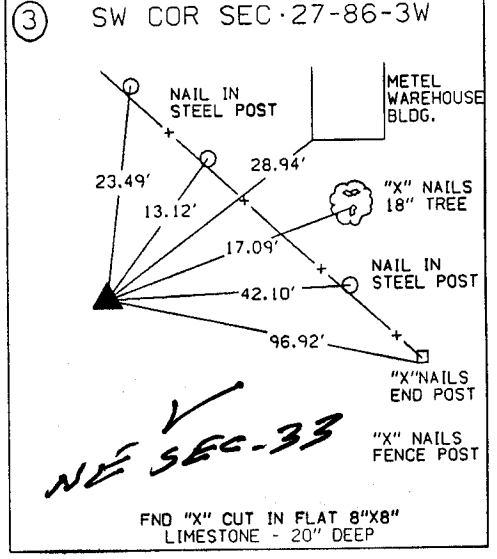
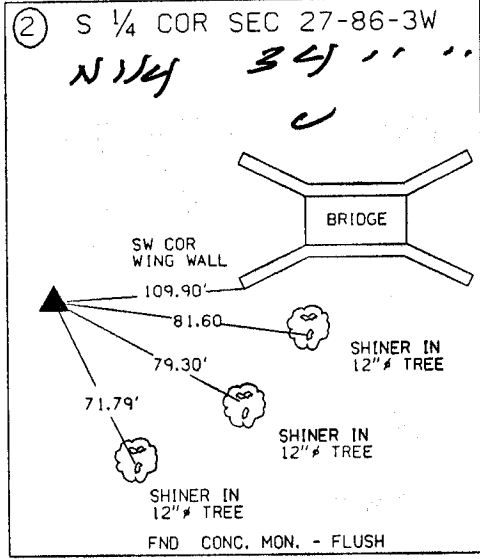
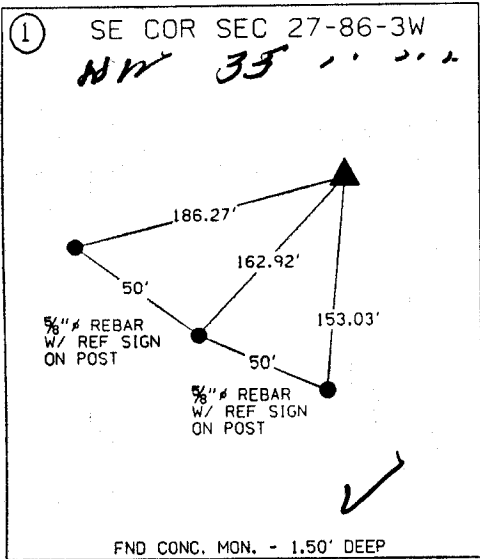
EARTH TECH



	I hereby certify that this Land Surveying document was prepared by me or under my direct personal supervision and that I am a duly Licensed Land Surveyor under the laws of the State of Iowa.	
	Michael R. Fogle	1-21-99
	MICHAEL R. FOGLE	Date
	License number 8505 My license renewal date is December 31, 2000 Pages or sheets covered by this seal: Two (2)	

METRIC

UNITED STATES PUBLIC SECTION CORNER CERTIFICATION  
AND LAND CORNER SURVEY  
SECTION 27 T-86N R-3W



**ALL TIES ARE ENGLISH UNLESS OTHERWISE NOTED**