

# SECTION CORNER CERTIFICATE

OF  
 LAND SURVEY MONUMENTS SITUATED IN SECTION 21, TOWNSHIP 86 NORTH,  
 RANGE 3 WEST, OF THE FIFTH PRINCIPAL MERIDIAN, JONES, COUNTY, IOWA.

PREVIOUSLY RECORDED IN BOOK \_\_\_\_\_ AT PAGE \_\_\_\_\_ .

FOR RECORDER'S USE

**REASON FOR PREPARING CERTIFICATE:**

- A) THERE IS NO CERTIFICATE FOR THE CORNER ON FILE WITH THE RECORDER OF THE COUNTY IN WHICH THE CORNER IS LOCATED.
- B) CORNER POSITION DIFFERS FROM THAT SHOWN IN THE PUBLIC RECORDS OF THE COUNTY IN WHICH THE CORNER IS LOCATED.
- C) THE CORNER MONUMENT HAS BEEN REPLACED OR MODIFIED.
- D) THE REFERENCE TIES REFERRED TO IN AN EXISTING PUBLIC RECORD ARE INCORRECT.

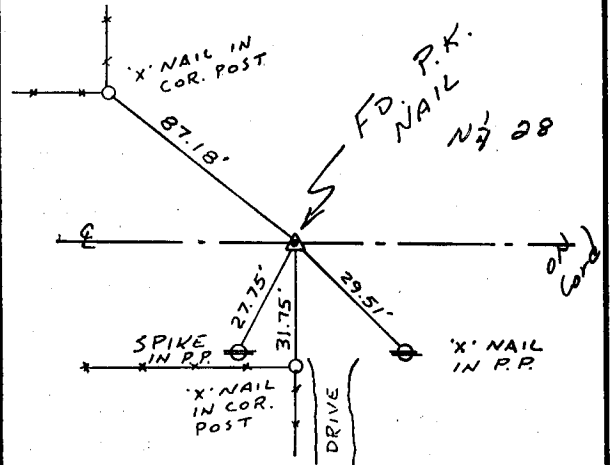
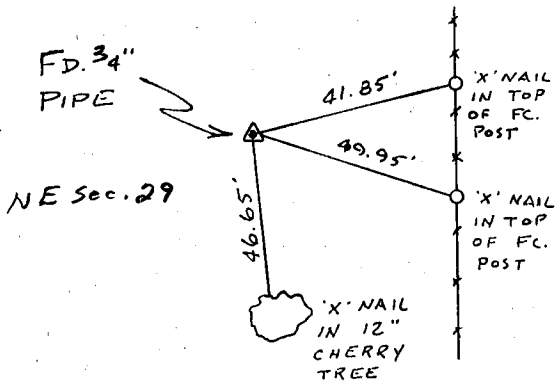
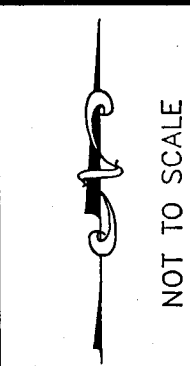
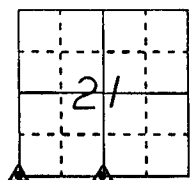
**MONUMENT DESCRIPTION AND REMARKS :**

S.W. CORNER SECTION 21-T 86N - R 3W FOUND 3/4" PIPE  
 6" ABOVE GROUND NORTHEAST OF NORTHERN NATURAL  
 GAS SUBSTATION IN WOODED AREA  
 S/4 CORNER SECTION 21-T 86N - R 3W FOUND P.K. NAIL ON  
 E OF AND IN LINE WITH FENCE SOUTH

## RECOVERY TIE DRAWING

S.W. CORNER 21-86-3

S/4 CORNER 21-86-3



I, DANIEL J. JOHNSON, -CERTIFY THAT THE CORNER LOCATION(S) SHOWN ON THIS RECORD WERE DETERMINED BY ME OR UNDER MY DIRECTION AND CONTROL AND THAT THIS U.S. PUBLIC LAND SURVEY MONUMENT RECORD IS CORRECT AND COMPLETE TO THE BEST OF MY KNOWLEDGE AND BELIEF.



*Daniel J. Johnson*  
 DANIEL J. JOHNSON L.S. NO. 11954 DATE 3-2-92

D Z G R E L	GOVERNMENT CORNER 5/8" TIE PIN SET CENTERLINE EXISTING FENCE LINE R.O.W. LINE	SHEET TITLE: U.S. PUBLIC LAND SURVEY RECORD PROJECT TITLE: ST. LUKES HOSPITAL SURVEY (MONTICELLO)	H H E N G I N G S HALL AND HALL ENGINEERS, INC. 226 29TH STREET DRIVE S.E. CEDAR RAPIDS, IOWA 52403 319-362-9548
	DW N R.W.B. KIC D.J.J. APP	DATE 2-21-92 SCALE NONE	

86329e-030292, 86328c-030292