

FEE BOOK: 2009 1502 4/29/2009 9:38 AM

REC FEES: \$7.00

PAGES: 1

Marie Krutzfield, Recorder
Jones County, Iowa

Prepared by Wm. Burger Land Surveyor

510 3rd Street West Court, Worthington, Iowa

Phone 563 - 855 2028

UNITED STATES PUBLIC LAND SURVEY CORNER CERTIFICATE

Land Survey Monuments situated in Section 29, Township 86N, Range 3W, of the Fifth Principal Meridian, Jones County, Iowa. Previously recorded in N/A in the Office of the County Recorder

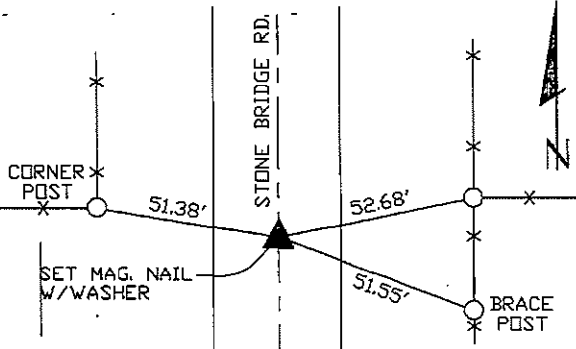
Monument Description and Remarks: (No Corner Certificates found at the County Recorders Office)

NW CORNER SW1/4 SW1/4 - SET MAG. NAIL W/WASHER IN ASPHALT ROAD - USED INFORMATION FROM ACQUISITION PLAT LOCATED IN THE JONES COUNTY RECORDER'S OFFICE DOCUMENT #2007 1681 TO SET THIS CORNER

NE CORNER SW1/4 SW1/4 - SET 1/2" IRON ROD W/ YELLOW LS CAP #12642 - RUN STRAIGHT LINES FROM OPPOSITE 1/4 1/4 CORNER AND SET AT POINT OF INTERSECTION

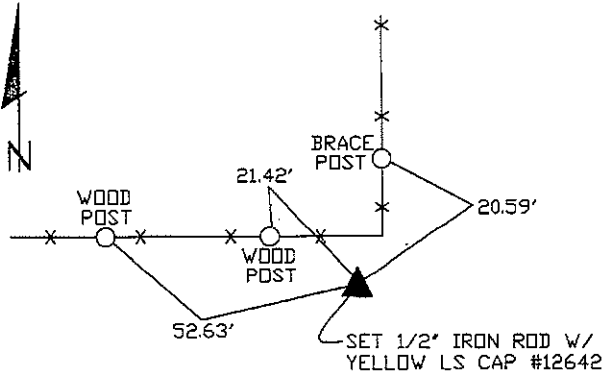
PLAN VIEW

NW CORNER SW1/4 SW1/4

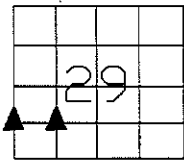


SET NAIL W/ WITNESS DISK ON TOP OF POST AT ALL TIE POINTS

NE CORNER SW1/4 SW1/4



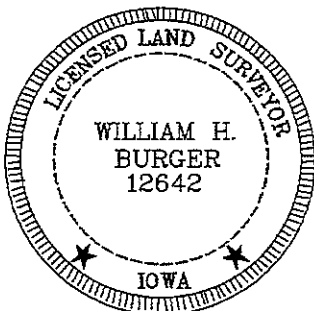
SET NAIL W/ WITNESS DISK ON TOP OF POST AT ALL TIE POINTS



SEC. 29 TWP. 86N RANGE 3W

CORNERS TO BE INDEXED

NW CORNER SW1/4 SW1/4	29	86N	3W
NE CORNER SW1/4 SW1/4	29	86N	3W



I hereby certify that this land surveying document was prepared and related survey work was performed by me or under my direct personal supervision and that I am a duly licensed Land Surveyor under the laws of the State of Iowa.

William H. Burger 4/28/09
Date

William H. Burger
License number 12642

My license renewal date is December 31, 2010

Pages or Sheets covered by this seal: Sheet 1 of 1