

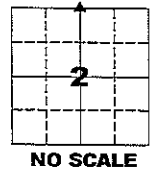
COPY

Jones County Iowa  
 Marie Krutzfield, Recorder  
**Fee Book 2010 1566**  
 06/16/2010 @1049AM  
 ZSC SEC COR CERT  
 Book: Page: # Pages: 1  
 Total Fees: \$0.00

PREPARED BY  
 CLARENCE J. WALTON, JONES COUNTY ENGINEER'S OFFICE, 19501 HWY. 64, ANAMOSA, IOWA, 52205 (319) 462-3785

**UNITED STATES PUBLIC LAND  
 SURVEY CORNER CERTIFICATE**  
 LAND SURVEY MONUMENTS SITUATED IN SECTION 2, TOWNSHIP 86 NORTH,  
 RANGE 3 WEST OF THE 5TH PRINCIPAL MERIDIAN, JONES COUNTY, IOWA.

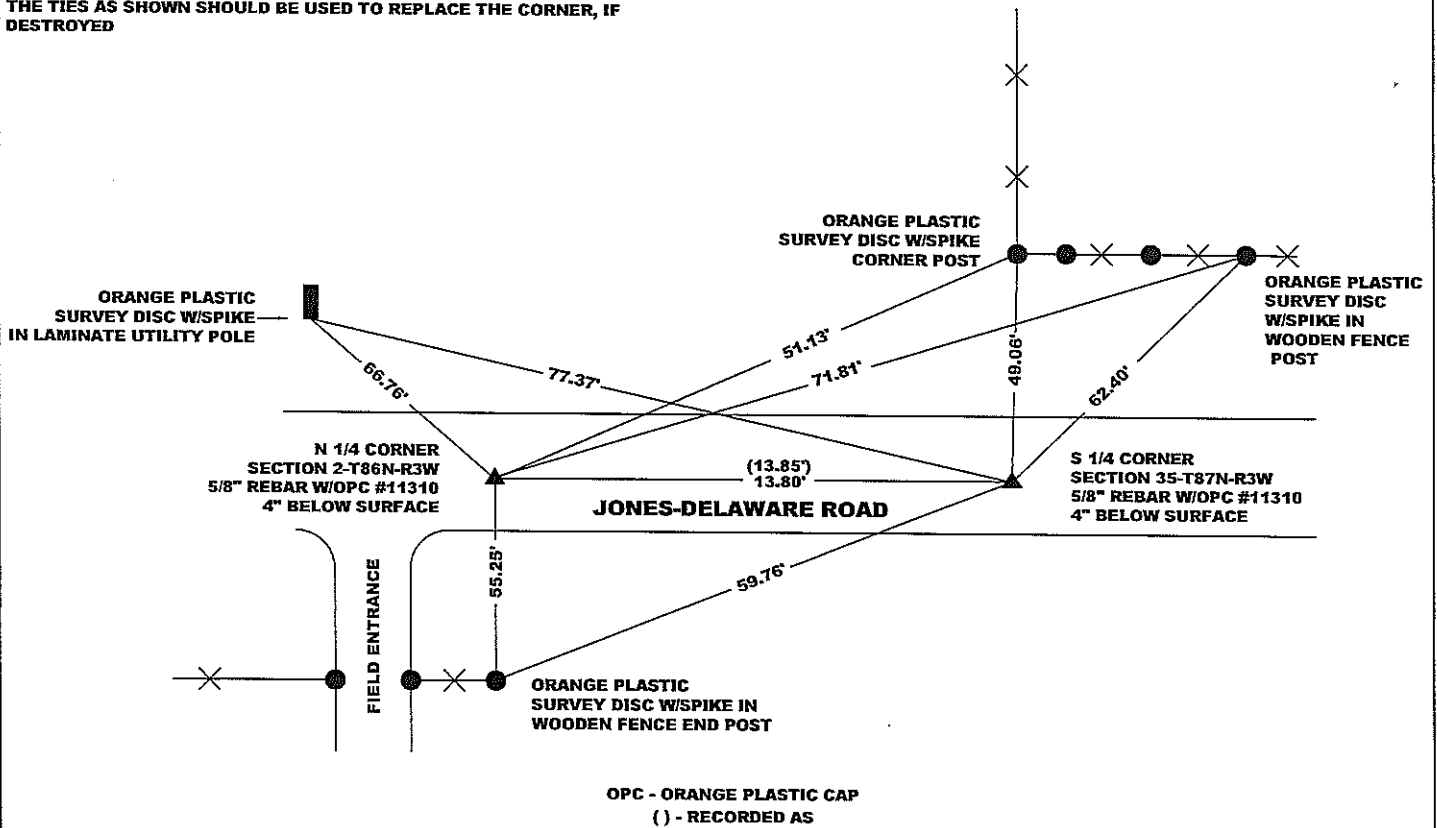
CORNER SECTION TOWNSHIP RANGE  
 N 1/4 2 86N 3W



OFFICE FILE NO.

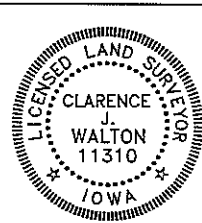
STATE PLANE COORDINATE  
 NAD 83 IOWA NORTH  
 N  
 E

NOTE:  
 THE STATE PLANE COORDINATE AS INDICATED IS FOR CONVENIENCE ONLY.  
 THE TIES AS SHOWN SHOULD BE USED TO REPLACE THE CORNER, IF  
 DESTROYED



PREVIOUSLY RECORDED IN BOOK 2002, PAGE 0742

MONUMENT DESCRIPTION AND HOW ESTABLISHED REPLACED CORNER AFTER ROAD CONSTRUCTION W/5/8" REBAR WOPC "JONES COUNTY 11310"  
AT POSITION AS FOUND DURING PRELIMINARY SURVEY FOR ROAD GRADING PROJECT.



I hereby certify that this land surveying document and the related survey work was performed by me or under my direct personal supervision and that I am a duly registered Land Surveyor under the laws of the State of Iowa.  
 Signed: *Clarence J. Walton* 6/16/10  
 Clarence J. Walton, L.S.  
 My Registration Renewal Date is December 31, 2011  
 Iowa License Number 11310  
 Pages or sheets covered by this seal: 1 of 1.

- A. THERE IS NO CERTIFICATE FOR THE CORNER ON FILE WITH THE RECORDER OF THE COUNTY IN WHICH THE CORNER IS LOCATED.
- B. THE CORNER MONUMENT HAS BEEN REPLACED OR MODIFIED.
- C. THE SURVEYOR IN RESPONSIBLE CHARGE OF THE LAND SURVEYING ACCEPTS A CORNER POSITION THAT DIFFERS FROM THAT SHOWN IN THE PUBLIC RECORDS OF THE COUNTY IN WHICH THE CORNER IS LOCATED.
- D. THE REFERENCE TIES REFERRED TO IN AN EXISTING PUBLIC RECORD NO LONGER EXIST.

CORNERS TO BE INDEXED			
CORNER	SECTION	TOWNSHIP	RANGE
N 1/4 CORNER	2	86N	3W

**JONES COUNTY ENGINEER'S OFFICE**

19501 HWY. 64, ANAMOSA, IOWA 52205  
 (319) 462-3785

Hand to Eng



Book 2007 Page 3934

Document 2007 3934 Type 06 007 Pages 1  
Date 12/07/2007 Time 12:39:07PM  
Rec Amt \$7.00

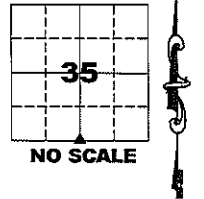
DEBORAH L PEYTON, RECORDER/REGISTRAR  
DELAWARE COUNTY IOWA

PREPARED BY  
CLARENCE J. WALTON, JONES COUNTY ENGINEER'S OFFICE, 19501 HWY. 64, ANAMOSA, IOWA, 52205 (319) 462-3785

# UNITED STATES PUBLIC LAND SURVEY CORNER CERTIFICATE

LAND SURVEY MONUMENTS SITUATED IN SECTION 35, TOWNSHIP 87 NORTH,  
RANGE 3 WEST OF THE 5TH PRINCIPAL MERIDIAN, DELAWARE COUNTY, IOWA.

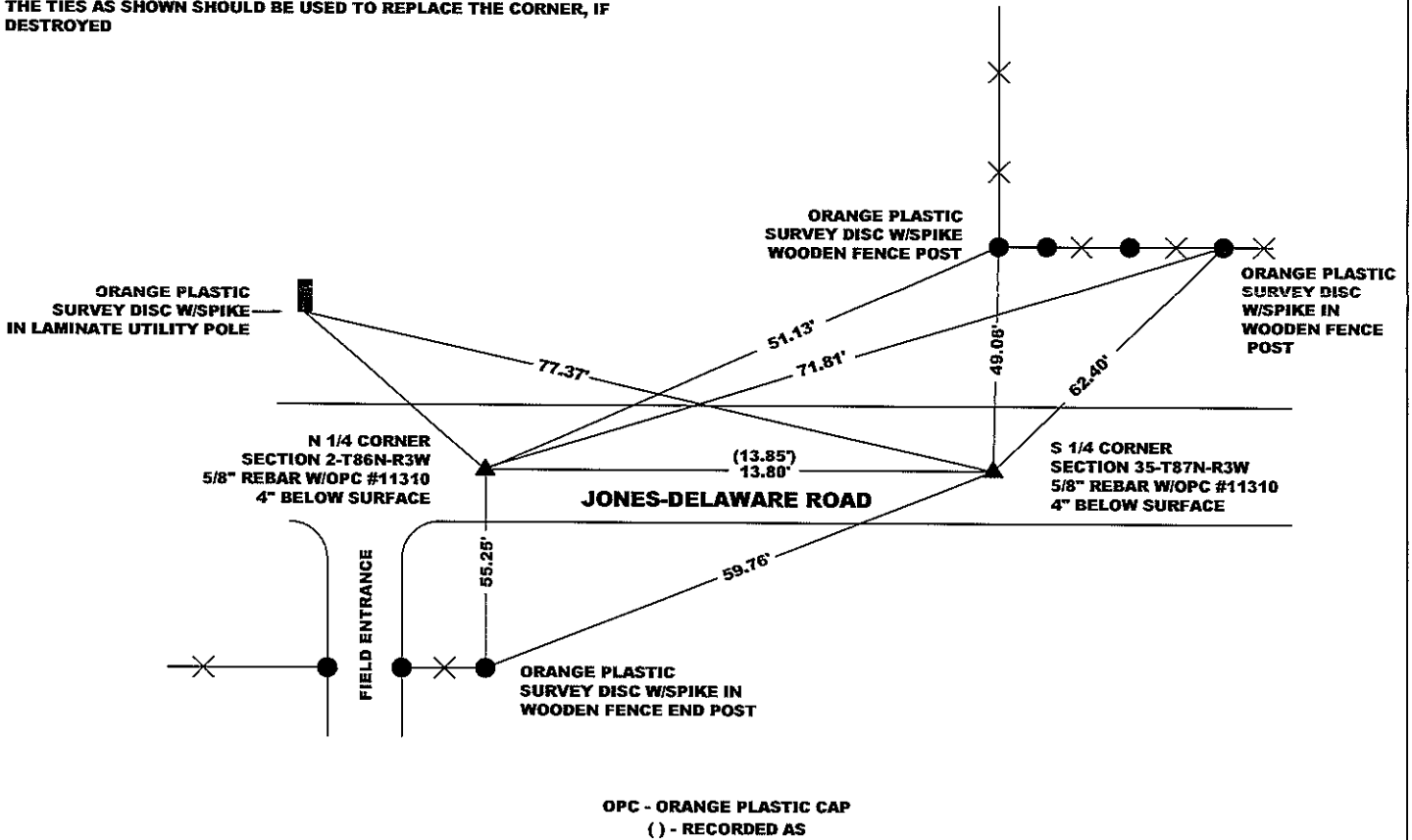
CORNER SECTION TOWNSHIP RANGE  
S 1/4 35 87N 3W



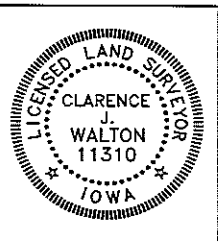
OFFICE FILE NO.

STATE PLANE COORDINATE  
NAD 83 IOWA NORTH  
N  
E

NOTE:  
THE STATE PLANE COORDINATE AS INDICATED IS FOR CONVENIENCE ONLY.  
THE TIES AS SHOWN SHOULD BE USED TO REPLACE THE CORNER, IF  
DESTROYED



PREVIOUSLY RECORDED IN BOOK 2002, PAGE 901  
MONUMENT DESCRIPTION AND HOW ESTABLISHED REPLACED CORNER AFTER ROAD CONSTRUCTION W/5/8" REBAR W/OPC "JONES COUNTY 11310"  
AT POSITION AS FOUND DURING PRELIMINARY SURVEY FOR ROAD GRADING PROJECT.



I hereby certify that this land surveying document and the related survey work was performed by me or under my direct personal supervision and that I am a duly registered Land Surveyor under the laws of the State of Iowa.  
Signed: *Clarence J. Walton* 12/4/07  
Clarence J. Walton, L.S.  
My Registration Renewal Date is December 31, 2007  
Iowa License Number 11310  
Pages or sheets covered by this seal: 1 of 1.

- A. THERE IS NO CERTIFICATE FOR THE CORNER ON FILE WITH THE RECORDER OF THE COUNTY IN WHICH THE CORNER IS LOCATED.
- B. THE CORNER MONUMENT HAS BEEN REPLACED OR MODIFIED.
- C. THE SURVEYOR IN RESPONSIBLE CHARGE OF THE LAND SURVEYING ACCEPTS A CORNER POSITION THAT DIFFERS FROM THAT SHOWN IN THE PUBLIC RECORDS OF THE COUNTY IN WHICH THE CORNER IS LOCATED.
- D. THE REFERENCE TIES REFERRED TO IN AN EXISTING PUBLIC RECORD NO LONGER EXIST.

CORNERS TO BE INDEXED			
CORNER	SECTION	TOWNSHIP	RANGE
S 1/4 CORNER	35	87N	3W

**JONES COUNTY ENGINEER'S OFFICE**

19501 HWY. 64, ANAMOSA, IOWA 52205  
(319) 462-3785

2002 0742

FILED  
RECORDERS OFFICE  
JONES COUNTY IOWA

02 FEB 27 AM 8:53

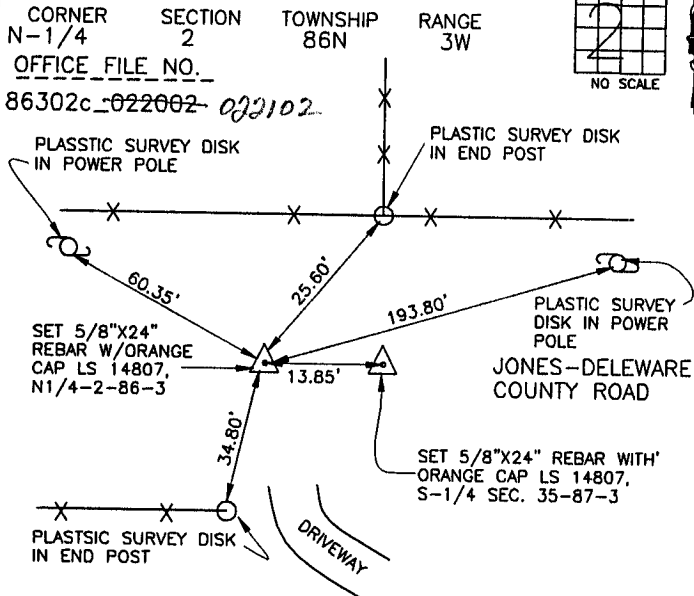
MARIE KRUTZFIELD  
RECORDER NO FEE

J.D. TJEPKES, LS. JONES COUNTY ENGINEER'S OFFICE, 19501 HWY. 64, ANAMOSA, IOWA, 52205 (319)462-3785

# UNITED STATES PUBLIC LAND SURVEY CORNER CERTIFICATE

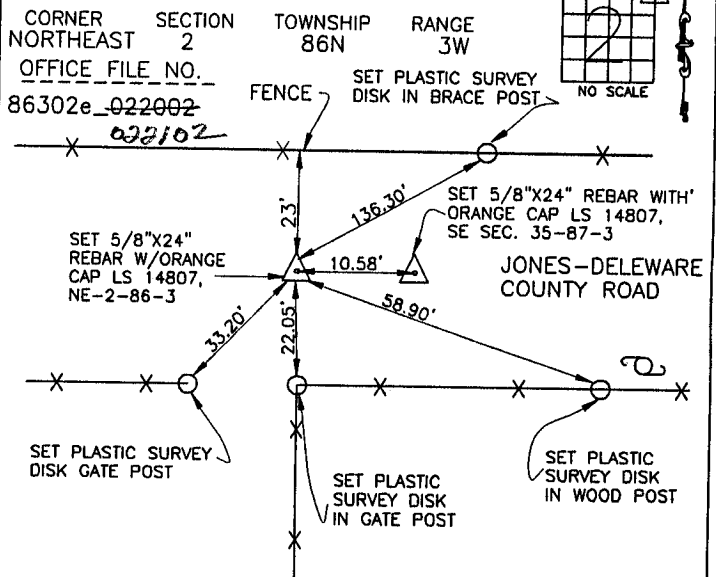
LAND SURVEY MONUMENTS SITUATED IN SECTION 2, TOWNSHIP 86  
NORTH, RANGE 3 WEST OF THE 5TH P.M., JONES COUNTY, IOWA

### CORNERS TO BE INDEXED



PREVIOUSLY RECORDED IN BOOK N/A, PAGE N/A  
MONUMENT DESCRIPTION AND HOW ESTABLISHED SET 5/8"X24" REBAR WITH ORANGE CAP LS 14807 ON TOWNSHIP LINE (SINGLE) PROPORTION METHOD. SET REFERENCE POINTS AND TIED OUT AS INDICATED. NORTH QUARTER CORNER SECTION 2, TOWNSHIP 86 NORTH, RANGE 3 WEST, 5TH PM, JONES COUNTY, IOWA

### CORNERS TO BE INDEXED



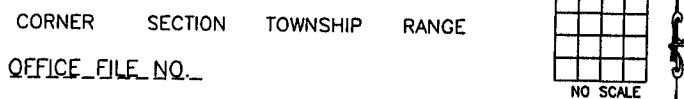
PREVIOUSLY RECORDED IN BOOK N/A, PAGE N/A  
MONUMENT DESCRIPTION AND HOW ESTABLISHED SET 5/8"X24" REBAR WITH ORANGE CAP LS 14807 ON TOWNSHIP LINE (SINGLE) PROPORTION METHOD. SET REFERENCE POINTS AND TIED OUT AS INDICATED. NORTHEAST CORNER SECTION 2, TOWNSHIP 86 NORTH, RANGE 3 WEST, 5TH PM, JONES COUNTY, IOWA.

### CORNERS TO BE INDEXED



PREVIOUSLY RECORDED IN BOOK \_\_\_\_\_, PAGE \_\_\_\_\_  
MONUMENT DESCRIPTION AND HOW ESTABLISHED \_\_\_\_\_

### CORNERS TO BE INDEXED

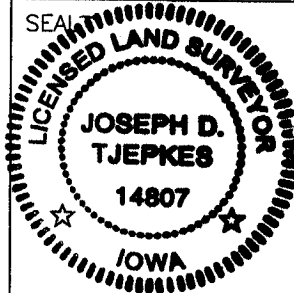


PREVIOUSLY RECORDED IN BOOK \_\_\_\_\_, PAGE \_\_\_\_\_  
MONUMENT DESCRIPTION AND HOW ESTABLISHED \_\_\_\_\_

I hereby declare that this plat, survey or report was made by me or under my direct personal supervision and that I am a duly registered Land Surveyor under the laws of the State of Iowa.

Signed: Joseph D. Tjepkes 2-21-02

Joseph D. Tjepkes L.S. Iowa Reg. No. 14807  
My Registration Renewal Date is December 31, 2002



J.D. TJEPKES LS 14807  
JONES COUNTY  
ENGINEER'S OFFICE

19501 HWY. 64,  
ANAMOSA, IOWA,  
52205 (319)462-3785

Call to Engineer

DELAWARE COUNTY IOWA  
FILED  
2002 APR 12 AM 9:28  
BOOK PAGE 901  
DEBORAH L. FEYTON  
DELAWARE CO. RECORDER  
N/A

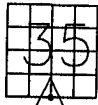
J.D. TJEPKES, LS. JONES COUNTY ENGINEER'S OFFICE, 19501 HWY. 64, ANAMOSA, IOWA, 52205 (319)462-3785

# UNITED STATES PUBLIC LAND SURVEY CORNER CERTIFICATE

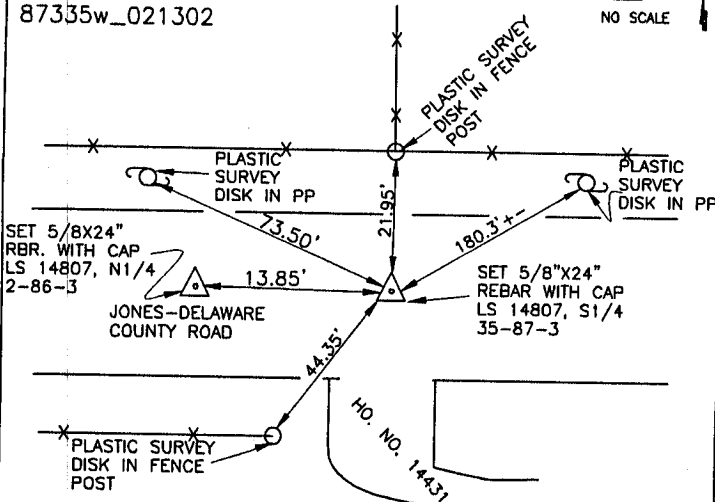
LAND SURVEY MONUMENTS SITUATED IN SECTION 35, TOWNSHIP 87  
NORTH, RANGE 3 WEST OF THE 5TH P.M., DELAWARE COUNTY, IOWA

### CORNERS TO BE INDEXED

CORNER SECTION TOWNSHIP RANGE  
SOUTH 1/4 35 87N 3W  
OFFICE FILE NO.  
87335w\_021302



NO SCALE



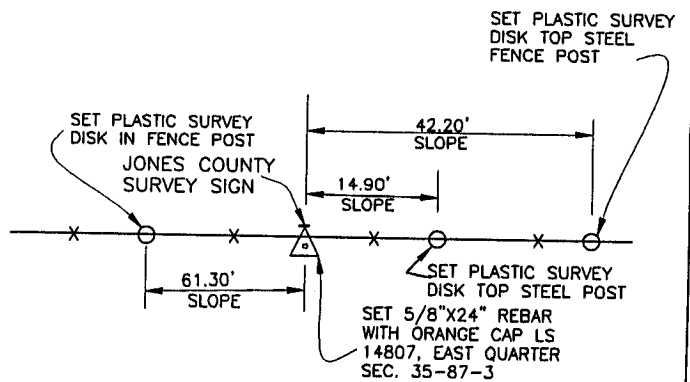
PREVIOUSLY RECORDED IN BOOK N/A, PAGE N/A.  
MONUMENT DESCRIPTION AND HOW ESTABLISHED SET 5/8"X24"  
REBAR WITH ORANGE CAP LS 14807 ON TOWNSHIP LINE PER  
PHYSICAL EVIDENCE AND SINGLE PROPORTION METHOD. SET RE-  
REFERENCE POINTS AND TIED OUT AS INDICATED. SOUTH QUARTER  
CORNER SECTION 35, TOWNSHIP 87 NORTH, RANGE 3 WEST, 5TH  
PM, DELAWARE COUNTY, IOWA

### CORNERS TO BE INDEXED

CORNER SECTION TOWNSHIP RANGE  
EAST 1/4 35 87N 3W  
OFFICE FILE NO.  
87335e\_021302



NO SCALE



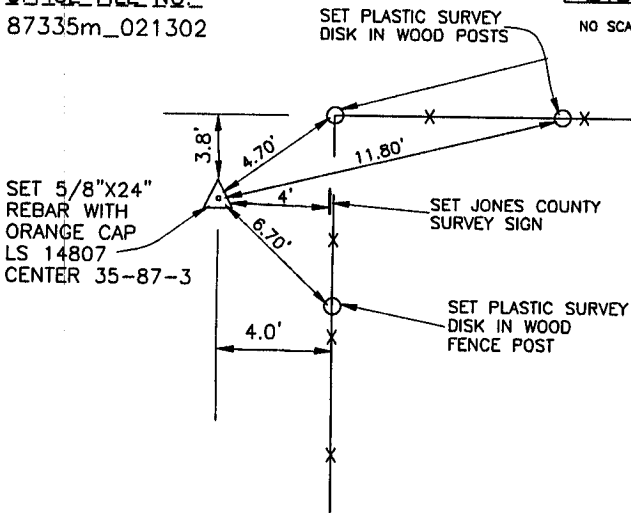
PREVIOUSLY RECORDED IN BOOK N/A, PAGE N/A.  
MONUMENT DESCRIPTION AND HOW ESTABLISHED SET 5/8"X24"  
REBAR WITH ORANGE CAP LS 14807 ON N-S SECTION LINE  
IN THE E-W FENCE. SET REFERENCE POINTS AND TIED OUT AS  
INDICATED. EAST QUARTER CORNER SECTION 35, TOWNSHIP 87  
NORTH, RANGE 3 WEST, 5TH PM, DELAWARE COUNTY, IOWA

### CORNERS TO BE INDEXED

CORNER SECTION TOWNSHIP RANGE  
CENTER 35 87N 3W  
OFFICE FILE NO.  
87335m\_021302



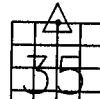
NO SCALE



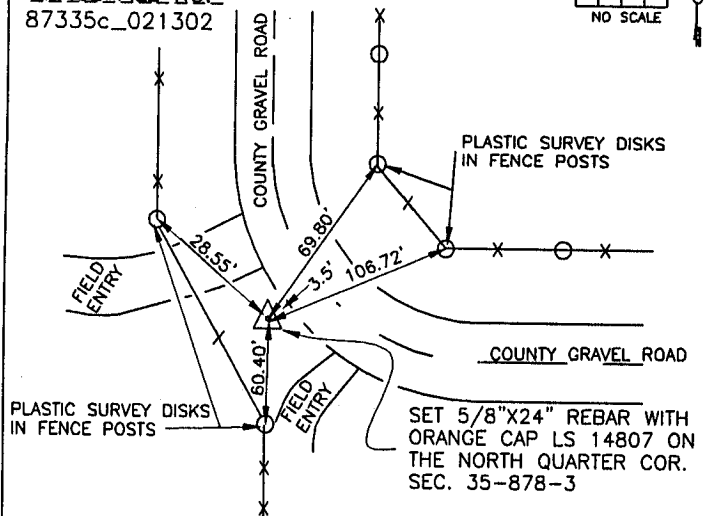
PREVIOUSLY RECORDED IN BOOK N/A, PAGE N/A.  
MONUMENT DESCRIPTION AND HOW ESTABLISHED SET 5/8"X24"  
REBAR WITH ORANGE CAP LS 14807 PER SECTION BREAKDOWN,  
SET REFERENCE POINTS AND TIED OUT AS INDICATED. CENTER  
SECTION 35, TOWNSHIP 87 NORTH, RANGE 3 WEST, 5TH PM,  
DELAWARE COUNTY, IOWA

### CORNERS TO BE INDEXED

CORNER SECTION TOWNSHIP RANGE  
N-1/4 35 87N 3W  
OFFICE FILE NO.  
87335c\_021302



NO SCALE



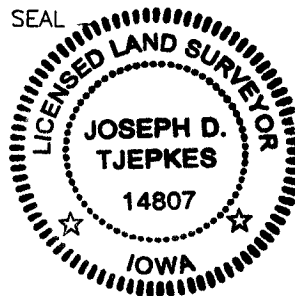
PREVIOUSLY RECORDED IN BOOK N/A, PAGE N/A.  
MONUMENT DESCRIPTION AND HOW ESTABLISHED SET 5/8"  
24" REBAR WITH ORANGE CAP LS 14807 ON SPLIT EAST-WEST  
AND PHYSICAL EVIDENCE PER ROAD RECORD N-S, SET REFERENCE  
POINTS AND TIED OUT AS INDICATED. NORTH QUARTER CORNER  
SECTION 35, TOWNSHIP 87 NORTH, RANGE 3 WEST, DELAWARE  
COUNTY, IOWA.

I hereby declare that this plat, survey or report was made by me or under my direct personal supervision and that I am a duly registered Land Surveyor under the laws of the State of Iowa.

Signed

*Joseph D. Tjepkes* 2-21-02

Joseph D. Tjepkes L.S. Iowa Reg. No. 14807  
My Registration Renewal Date is December 31, 2002



J.D. TJEPKES LS 14807  
JONES COUNTY  
ENGINEER'S OFFICE

19501 HWY. 64,  
ANAMOSA, IOWA,  
52205 (319)462-3785