

COPY

FEE BOOK: 2009 2761 8/5/2009 2:11 PM
 REC FEES: No Fee
 PAGES: 1 Marie Krutzfield, Recorder
 Jones County, Iowa

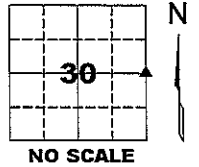
PREPARED BY
 CLARENCE J. WALTON, JONES COUNTY ENGINEER'S OFFICE, 19501 HWY. 64, ANAMOSA, IOWA, 52205 (319) 462-3785

UNITED STATES PUBLIC LAND
 SURVEY CORNER CERTIFICATE
 LAND SURVEY MONUMENTS SITUATED IN SECTION 30, TOWNSHIP 86 NORTH,
 RANGE 3 WEST OF THE 5TH PRINCIPAL MERIDIAN, JONES COUNTY, IOWA.

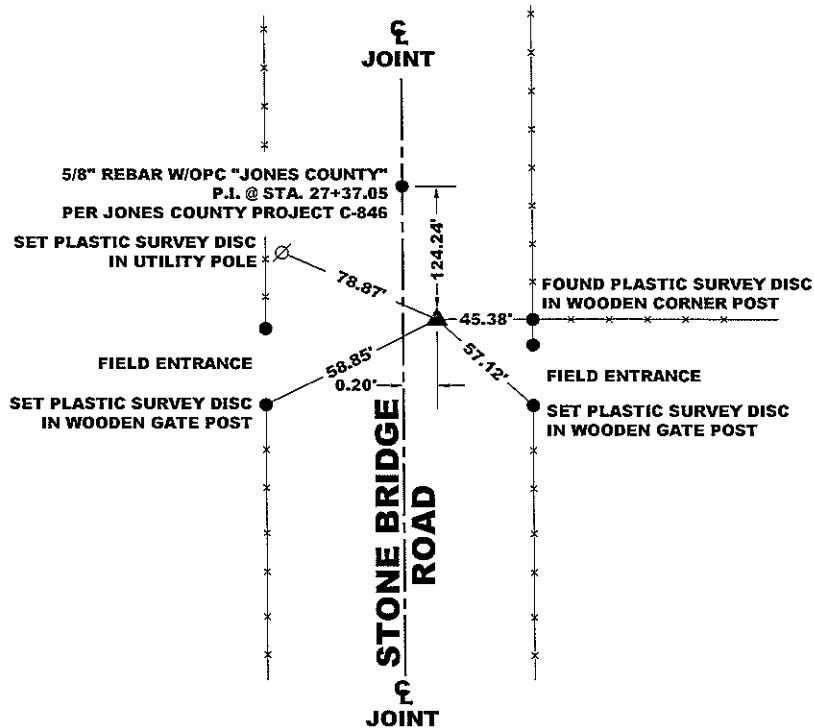
OFFICE FILE NO.

E 1/4 CORNER SECTION 30-T86N-R3W
 STATE PLANE COORDINATE
 NAD 83 IOWA NORTH
 N 3555341.78
 E 5536332.07

CORNER SECTION TOWNSHIP RANGE
 E 1/4 30 T86N R3W



NOTE:
 THE STATE PLANE COORDINATE AS INDICATED IS FOR CONVENIENCE ONLY.
 THE TIES AS SHOWN SHOULD BE USED TO REPLACE THE CORNER, IF
 DESTROYED



LEGEND

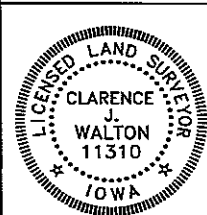
- YPC YELLOW PLASTIC CAP
- OPC ORANGE PLASTIC CAP
- () RECORDED AS

PAGE 1 of 1

PREVIOUSLY RECORDED IN RECORDER'S DOCUMENT No. 2001 3976

MONUMENT DESCRIPTION AND HOW ESTABLISHED SET 5/8" REBAR WITH ORANGE PLASTIC CAP #11310 IN ASPHALT ROAD TO REPLACE REBAR DESTROYED BY CONSTRUCTION. CORNER WAS RESET BY USING DATA FROM JONES COUNTY ROAD PROJECT C-846 AND CORNER CERTIFICATE RECORDED IN JONES COUNTY RECORDER'S DOCUMENT 2001 3976.

FIELD BOOK 357, PAGE 79. DATE OF SURVEY: 7/29/09



I hereby certify that this land surveying document and the related survey work was performed by me or under my direct personal supervision and that I am a duly registered Land Surveyor under the laws of the State of Iowa.
 Signed: *Clarence J. Walton* 8/5/09
 Clarence J. Walton, L.S.
 My Registration Renewal Date is December 31, 2009
 Iowa License Number 11310
 Pages or sheets covered by this seal: 1 of 1

- A. THERE IS NO CERTIFICATE FOR THE CORNER ON FILE WITH THE RECORDER OF THE COUNTY IN WHICH THE CORNER IS LOCATED.
- B. THE CORNER MONUMENT HAS BEEN REPLACED OR MODIFIED.
- C. THE SURVEYOR IN RESPONSIBLE CHARGE OF THE LAND SURVEYING ACCEPTS A CORNER POSITION THAT DIFFERS FROM THAT SHOWN IN THE PUBLIC RECORDS OF THE COUNTY IN WHICH THE CORNER IS LOCATED.
- D. THE REFERENCE TIES REFERRED TO IN AN EXISTING PUBLIC RECORD NO LONGER EXIST.
- E. ADDED TIES TO FACILITATE LOCATING SECTION CORNER MONUMENT.

CORNERS TO BE INDEXED

CORNER	SECTION	TOWNSHIP	RANGE
E 1/4	30	86N	3W
W 1/4	29	86N	3W

JONES COUNTY ENGINEER'S OFFICE



19501 HWY. 64, ANAMOSA, IOWA 52205
 (319) 462-3785

86436e-102401
ID 1041

2001 3976

FILED
RECORDERS OFFICE
JONES COUNTY IOWA

01 NOV 16 PM 12:05

MARIE KRUTZFIELD
RECORDER No Fee

864250-102401
ID 1042

863300-102401
ID 1043

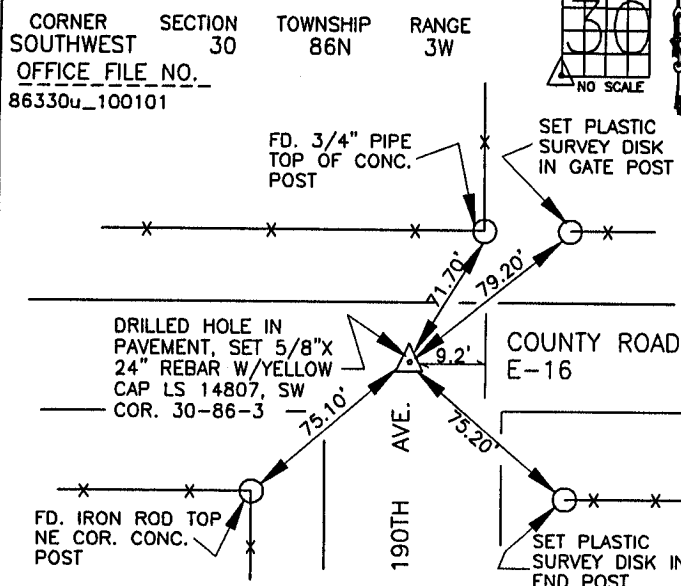
86330m-102401
ID 1044

J.D. TJEPKES, L.S. JONES COUNTY ENGINEER'S OFFICE, 19501 HWY. 64, ANAMOSA, IOWA, 52205 (319)462-3785

UNITED STATES PUBLIC LAND SURVEY CORNER CERTIFICATE

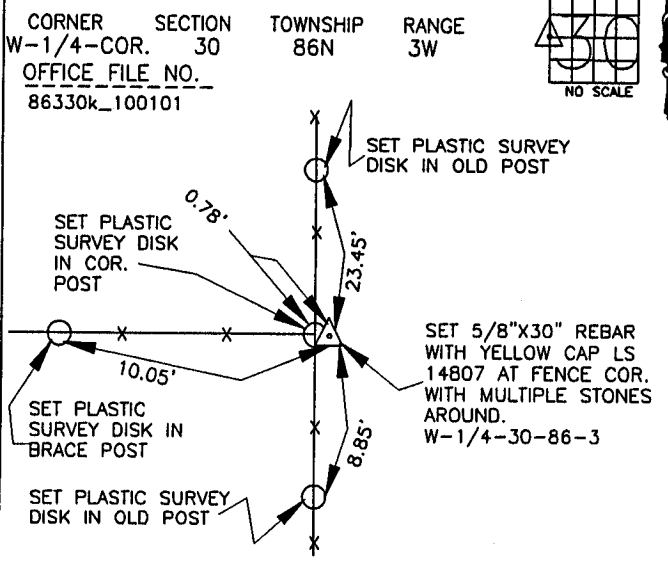
LAND SURVEY MONUMENTS SITUATED IN SECTION 30, TOWNSHIP 86
NORTH, RANGE 3 WEST OF THE 5TH P.M., JONES COUNTY, IOWA

CORNERS TO BE INDEXED



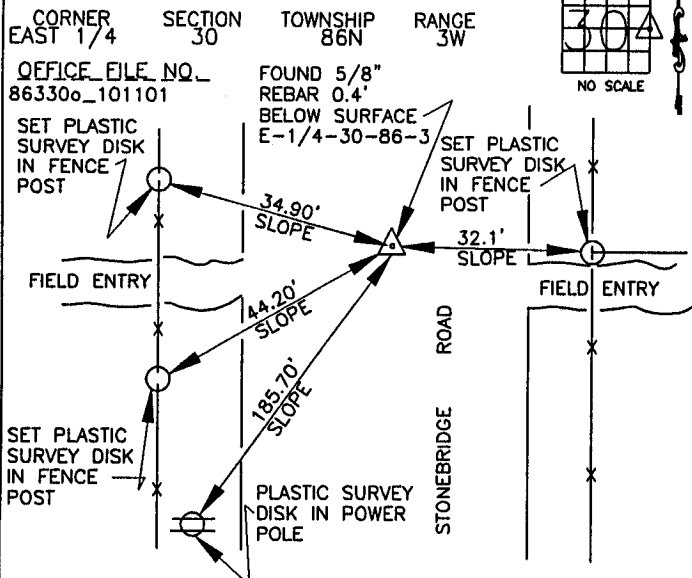
PREVIOUSLY RECORDED IN BOOK N/A, PAGE N/A. MONUMENT DESCRIPTION AND HOW ESTABLISHED FOUND CUT SQUARE AT SEC. COR. LOCATION PER COUNTY ROAD PLAN LC-2756 (1) AT STA. 318+53.7. DRILLED HOLE IN PAVEMENT, SET 5/8"X24" REBAR WITH YELLOW CAP LS 14807 IN CENTER OF SQUARE. SET REFERENCE POINTS AND TIED OUT AS INDICATED. SW-30-86-3.

CORNERS TO BE INDEXED



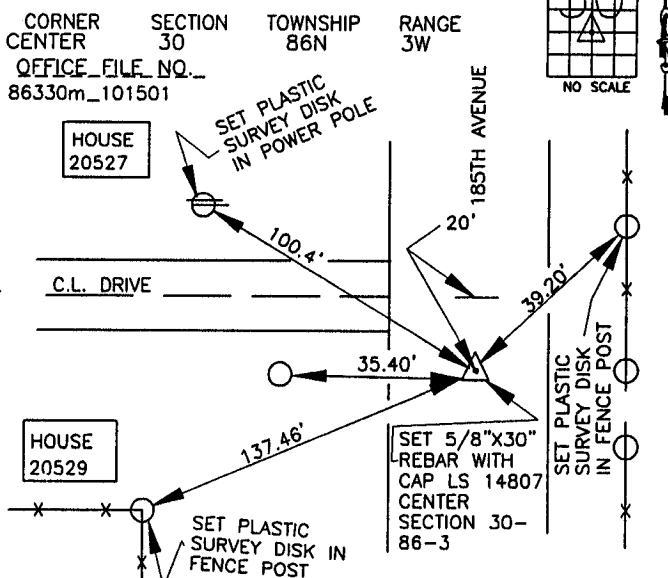
PREVIOUSLY RECORDED IN BOOK N/A, PAGE N/A. MONUMENT DESCRIPTION AND HOW ESTABLISHED SET 5/8"X30" REBAR WITH YELLOW CAP LS 14807 AT FENCE COR. WITH MULTIPLE STONES AROUND. GOOD DISTANCES AND BEARINGS NORTH AND SOUTH. SET REFERENCE POINTS AND TIED OUT AS INDICATED. WEST QUARTER CORNER SECTION 30, T86N, R3W, 5TH P.M., JONES COUNTY, IOWA.

CORNERS TO BE INDEXED



PREVIOUSLY RECORDED IN BOOK N/A, PAGE N/A. MONUMENT DESCRIPTION AND HOW ESTABLISHED FOUND 5/8" REBAR 0.4' BELOW ROAD SURFACE IN CENTER OF ROAD. SET REFERENCE POINTS AND TIED OUT AS INDICATED. EAST QUARTER CORNER SECTION 30, TOWNSHIP 86 NORTH, RANGE 3 WEST, 5TH P.M., JONES COUNTY, IOWA

CORNERS TO BE INDEXED



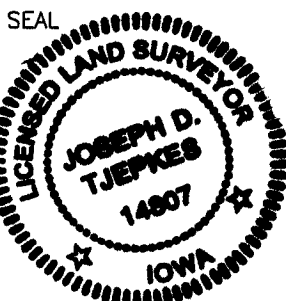
PREVIOUSLY RECORDED IN BOOK N/A, PAGE N/A. MONUMENT DESCRIPTION AND HOW ESTABLISHED SET 5/8"X30" REBAR WITH YELLOW CAP LS 14807 PER SECTION BREAKDOWN AND INTERSECTING QUARTER LINES. SET REFERENCE POINTS AND TIED OUT AS INDICATED. CENTER SECTION 30, T86N, R3W, 5TH P.M., JONES COUNTY IOWA.

I hereby declare that this plat, survey or report was made by me or under my direct personal supervision and that I am a duly registered Land Surveyor under the laws of the State of Iowa.

Signed:

Joseph D. Tjepkes 10-24-01

Joseph D. Tjepkes L.S. Iowa Reg. No. 14807
My Registration Renewal Date is December 31, 2002



J.D. TJEPKES LS 14807
JONES COUNTY
ENGINEER'S OFFICE

19501 HWY. 64,
ANAMOSA, IOWA,
52205 (319)462-3785