

COPY

FEE BOOK: 2009 2760 8/5/2009 2:09 PM
 REC FEES: No Fee
 PAGES: 1 Marie Krutzfield, Recorder
 Jones County, Iowa

PREPARED BY
 CLARENCE J. WALTON, JONES COUNTY ENGINEER'S OFFICE, 19501 HWY. 64, ANAMOSA, IOWA, 52205 (319) 462-3785

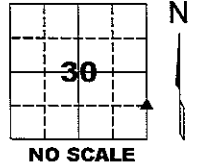
UNITED STATES PUBLIC LAND SURVEY CORNER CERTIFICATE

LAND SURVEY MONUMENTS SITUATED IN SECTION 30, TOWNSHIP 86 NORTH,
 RANGE 3 WEST OF THE 5TH PRINCIPAL MERIDIAN, JONES COUNTY, IOWA.

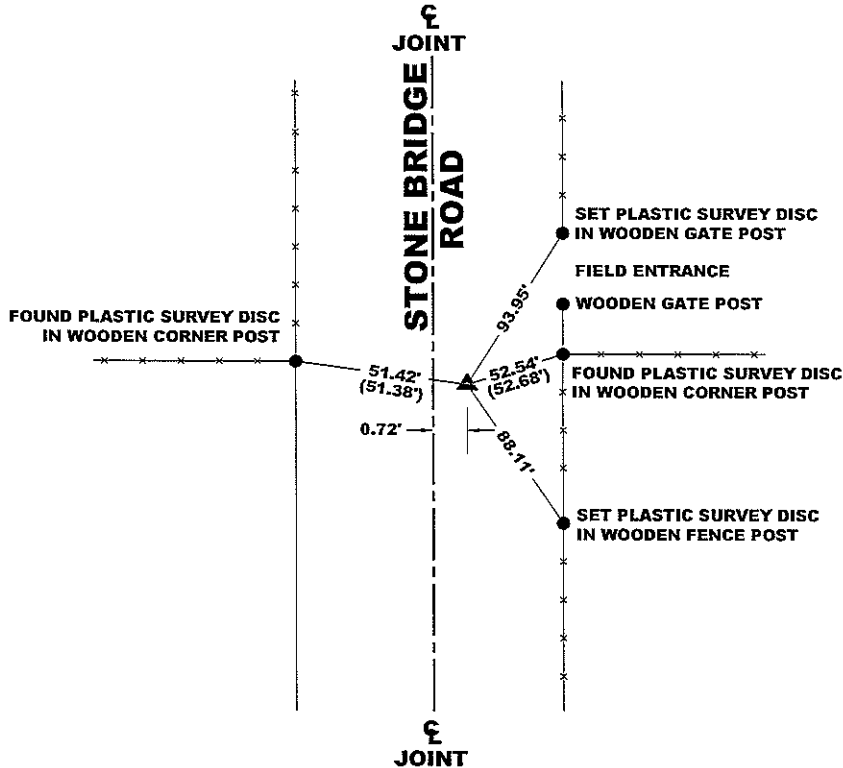
OFFICE FILE NO.

NE CORNER SE 1/4 SE 1/4 SECTION 30-T86N-R3W
 STATE PLANE COORDINATE
 NAD 83 IOWA NORTH
 N 3554024.79
 E 5536369.40

CORNER SECTION TOWNSHIP RANGE
 NE 30 T86N R3W
 SE 1/4 SE 1/4



NOTE:
 THE STATE PLANE COORDINATE AS INDICATED IS FOR CONVENIENCE ONLY.
 THE TIES AS SHOWN SHOULD BE USED TO REPLACE THE CORNER, IF
 DESTROYED



LEGEND

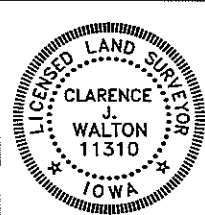
- YPC YELLOW PLASTIC CAP
- OPC ORANGE PLASTIC CAP
- () RECORDED AS

PAGE 1 of 1

PREVIOUSLY RECORDED IN RECORDER'S DOCUMENT No. 2009 1502

MONUMENT DESCRIPTION AND HOW ESTABLISHED SET 5/8" REBAR WITH ORANGE PLASTIC CAP #11310 IN ASPHALT ROAD TO REPLACE MAG NAIL OBLITERATED BY ASPHALT LIFT. MAG NAIL WAS SET BY BILL BURGER, LS #12642 AND RECORDED IN RECORDER'S DOCUMENT No. 2009 1502 USING DATA FROM JONES COUNTY ROAD PROJECT C-846. SAID DATA USED TO RESET CORNER.

FIELD BOOK 357, PAGE 80. DATE OF SURVEY: 7/29/09



I hereby certify that this land surveying document and the related survey work was performed by me or under my direct personal supervision and that I am a duly registered Land Surveyor under the laws of the State of Iowa.
 Signed: *Clarence J. Walton* 8/5/09
 Clarence J. Walton, L.S.
 My Registration Renewal Date is December 31, 2009
 Iowa License Number 11310
 Pages or sheets covered by this seal: 1 of 1

- A. THERE IS NO CERTIFICATE FOR THE CORNER ON FILE WITH THE RECORDER OF THE COUNTY IN WHICH THE CORNER IS LOCATED.
- B. THE CORNER MONUMENT HAS BEEN REPLACED OR MODIFIED.
- C. THE SURVEYOR IN RESPONSIBLE CHARGE OF THE LAND SURVEYING ACCEPTS A CORNER POSITION THAT DIFFERS FROM THAT SHOWN IN IN THE PUBLIC RECORDS OF THE COUNTY IN WHICH THE CORNER IS LOCATED.
- D. THE REFERENCE TIES REFERRED TO IN AN EXISTING PUBLIC RECORD NO LONGER EXIST.
- E. ADDED TIES TO FACILITATE LOCATING SECTION CORNER MONUMENT.

CORNERS TO BE INDEXED			
CORNER	SECTION	TOWNSHIP	RANGE
NE SE 1/4 SE 1/4	30	86N	3W
SE NE 1/4 SE 1/4	30	86N	3W
NW SW 1/4 SW 1/4	29	86N	3W
SW NW 1/4 SW 1/4	29	86N	3W

JONES COUNTY ENGINEER'S OFFICE



19501 HWY. 64, ANAMOSA, IOWA 52205
 (319) 462-3785

FEE BOOK: 2009 1502 4/29/2009 9:38 AM

REC FEES: \$7.00

PAGES: 1

Marie Krutzfield, Recorder
Jones County, Iowa

Prepared by Wm. Burger Land Surveyor

510 3rd Street West Court, Worthington, Iowa

Phone 563 - 855 2028

UNITED STATES PUBLIC LAND SURVEY CORNER CERTIFICATE

Land Survey Monuments situated in Section 29, Township 86N, Range 3W, of the Fifth Principal Meridian, Jones County, Iowa. Previously recorded in N/A in the Office of the County Recorder

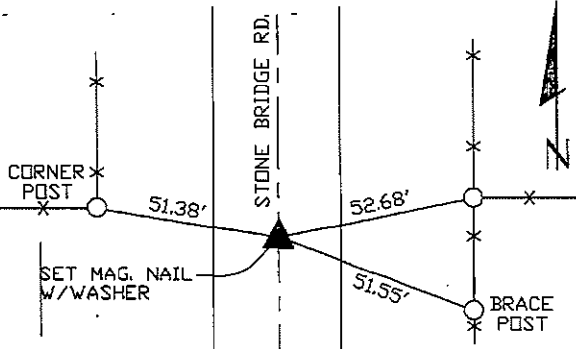
Monument Description and Remarks: (No Corner Certificates found at the County Recorders Office)

NW CORNER SW1/4 SW1/4 - SET MAG. NAIL W/WASHER IN ASPHALT ROAD - USED INFORMATION FROM ACQUISITION PLAT LOCATED IN THE JONES COUNTY RECORDER'S OFFICE DOCUMENT #2007 1681 TO SET THIS CORNER

NE CORNER SW1/4 SW1/4 - SET 1/2" IRON ROD W/ YELLOW LS CAP #12642 - RUN STRAIGHT LINES FROM OPPOSITE 1/4 1/4 CORNER AND SET AT POINT OF INTERSECTION

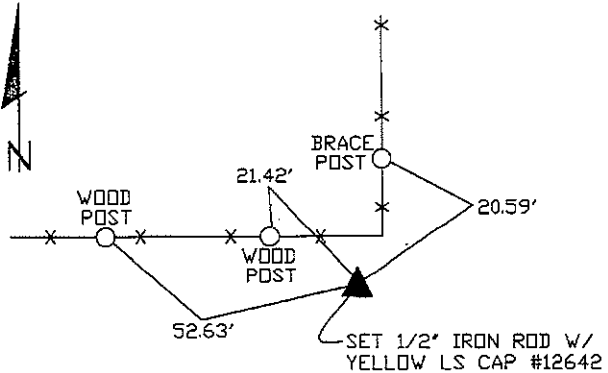
PLAN VIEW

NW CORNER SW1/4 SW1/4

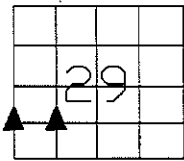


SET NAIL W/ WITNESS DISK ON TOP OF POST AT ALL TIE POINTS

NE CORNER SW1/4 SW1/4



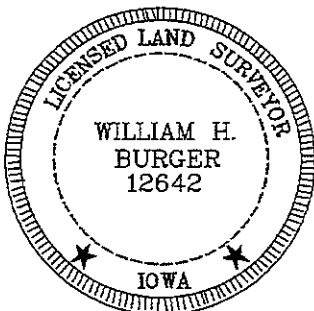
SET NAIL W/ WITNESS DISK ON TOP OF POST AT ALL TIE POINTS



SEC. 29 TWP. 86N RANGE 3W

CORNERS TO BE INDEXED

NW CORNER SW1/4 SW1/4	29	86N	3W
NE CORNER SW1/4 SW1/4	29	86N	3W



I hereby certify that this land surveying document was prepared and related survey work was performed by me or under my direct personal supervision and that I am a duly licensed Land Surveyor under the laws of the State of Iowa.

William H. Burger 4/28/09
Date

William H. Burger
License number 12642

My license renewal date is December 31, 2010

Pages or Sheets covered by this seal: Sheet 1 of 1