

COPY

FEE BOOK: 2009 2762 8/5/2009 2:12 PM
 REC FEES: No Fee
 PAGES: 1

Marie Krutzfield, Recorder
 Jones County, Iowa

PREPARED BY

CLARENCE J. WALTON, JONES COUNTY ENGINEER'S OFFICE, 19501 HWY. 64, ANAMOSA, IOWA, 52205 (319) 462-3785

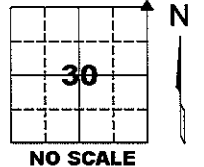
UNITED STATES PUBLIC LAND SURVEY CORNER CERTIFICATE

LAND SURVEY MONUMENTS SITUATED IN SECTION 30, TOWNSHIP 86 NORTH,
 RANGE 3 WEST OF THE 5TH PRINCIPAL MERIDIAN, JONES COUNTY, IOWA.

OFFICE FILE NO.

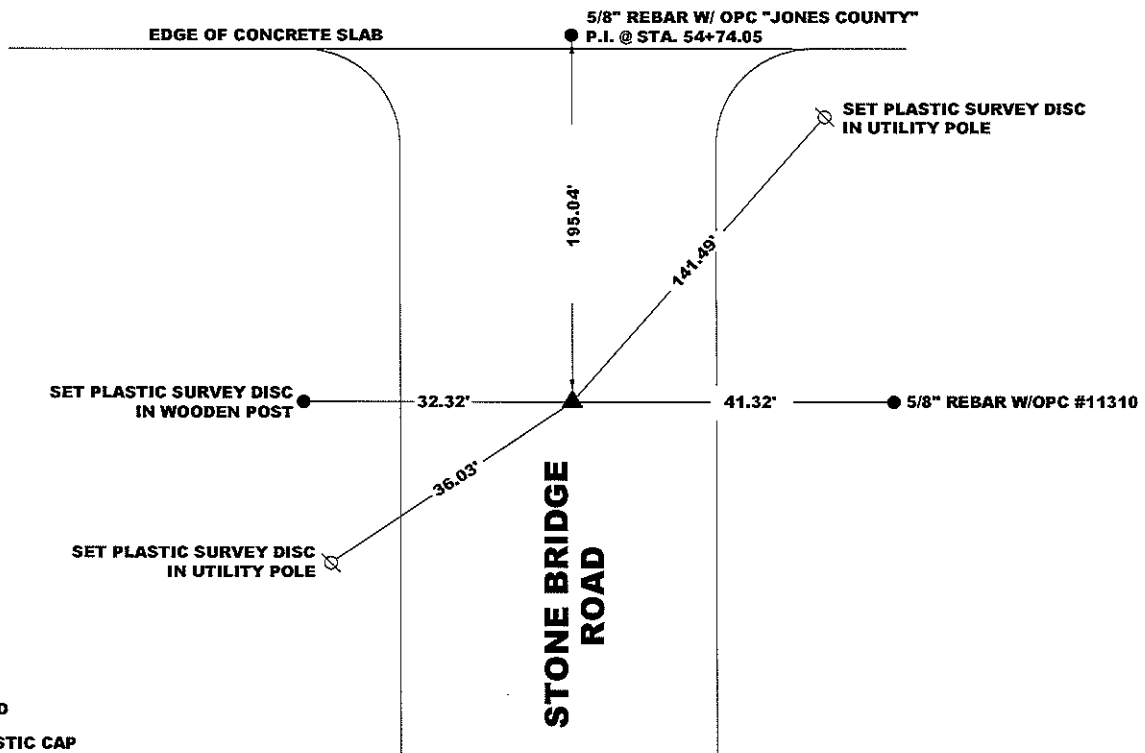
NE CORNER SECTION 30-T86N-R3W
 STATE PLANE COORDINATE
 NAD 83 IOWA NORTH
 N 3558007.14
 E 5536265.82

CORNER SECTION TOWNSHIP RANGE
 NE 30 T86N R3W



NOTE:
 THE STATE PLANE COORDINATE AS INDICATED IS FOR CONVENIENCE ONLY.
 THE TIES AS SHOWN SHOULD BE USED TO REPLACE THE CORNER, IF
 DESTROYED

D-62



LEGEND

- YPC YELLOW PLASTIC CAP
- OPC ORANGE PLASTIC CAP
- () RECORDED AS

PAGE 1 of 1

PREVIOUSLY RECORDED IN RECORDER'S DOCUMENT No. 1999 3214

MONUMENT DESCRIPTION AND HOW ESTABLISHED SET 5/8" REBAR WITH ORANGE PLASTIC CAP #11310 IN ASPHALT ROAD TO REPLACE REBAR DESTROYED BY CONSTRUCTION USING DATA FROM JONES COUNTY ROAD PROJECT C-846.

FIELD BOOK 357, PAGE 79. DATE OF SURVEY: 7/29/09



I hereby certify that this land surveying document and the related survey work was performed by me or under my direct personal supervision and that I am a duly registered Land Surveyor under the laws of the State of Iowa.
 Signed:

Clarence J. Walton 8/5/09
 Clarence J. Walton, L.S.
 My Registration Renewal Date is December 31, 2009
 Iowa License Number 11310
 Pages or sheets covered by this seal: 1 of 1

- A. THERE IS NO CERTIFICATE FOR THE CORNER ON FILE WITH THE RECORDER OF THE COUNTY IN WHICH THE CORNER IS LOCATED.
- B. THE CORNER MONUMENT HAS BEEN REPLACED OR MODIFIED.
- C. THE SURVEYOR IN RESPONSIBLE CHARGE OF THE LAND SURVEYING ACCEPTS A CORNER POSITION THAT DIFFERS FROM THAT SHOWN IN THE PUBLIC RECORDS OF THE COUNTY IN WHICH THE CORNER IS LOCATED.
- D. THE REFERENCE TIES REFERRED TO IN AN EXISTING PUBLIC RECORD NO LONGER EXIST.
- E. ADDED TIES TO FACILITATE LOCATING SECTION CORNER MONUMENT.

CORNERS TO BE INDEXED

CORNER	SECTION	TOWNSHIP	RANGE
NE	30	86N	3W
SW	20	86N	3W
NW	29	86N	3W
SE	19	86N	3W

JONES COUNTY ENGINEER'S OFFICE



19501 HWY. 64, ANAMOSA, IOWA 52205
 (319) 462-3785

1999 3214
 FILED
 RECORDERS OFFICE
 JONES COUNTY IOWA
 99 SEP -8 AM 10: 54
 MARIE KRUTZFIELD
 RECORDER 600 Pd

SURVEYOR: DANIEL J. JOHNSON - 208 28TH ST NE - CEDAR RAPIDS, IA 52402 - (319) 362-9548

SECTION CORNER CERTIFICATE
 OF

LAND SURVEY MONUMENTS SITUATED IN SECTION 19, TOWNSHIP 26 NORTH,
 RANGE 3 WEST, OF THE FIFTH PRINCIPAL MERIDIAN, JONES, COUNTY, IOWA.

PREVIOUSLY RECORDED IN BOOK _____ AT PAGE _____

REASON FOR PREPARING CERTIFICATE:

- A) THERE IS NO CERTIFICATE FOR THE CORNER ON FILE WITH THE RECORDER OF THE COUNTY IN WHICH THE CORNER IS LOCATED.
- B) CORNER POSITION DIFFERS FROM THAT SHOWN IN THE PUBLIC RECORDS OF THE COUNTY IN WHICH THE CORNER IS LOCATED.
- C) THE CORNER MONUMENT HAS BEEN REPLACED OR MODIFIED.
- D) THE REFERENCE TIES REFERRED TO IN AN EXISTING PUBLIC RECORD ARE INCORRECT.

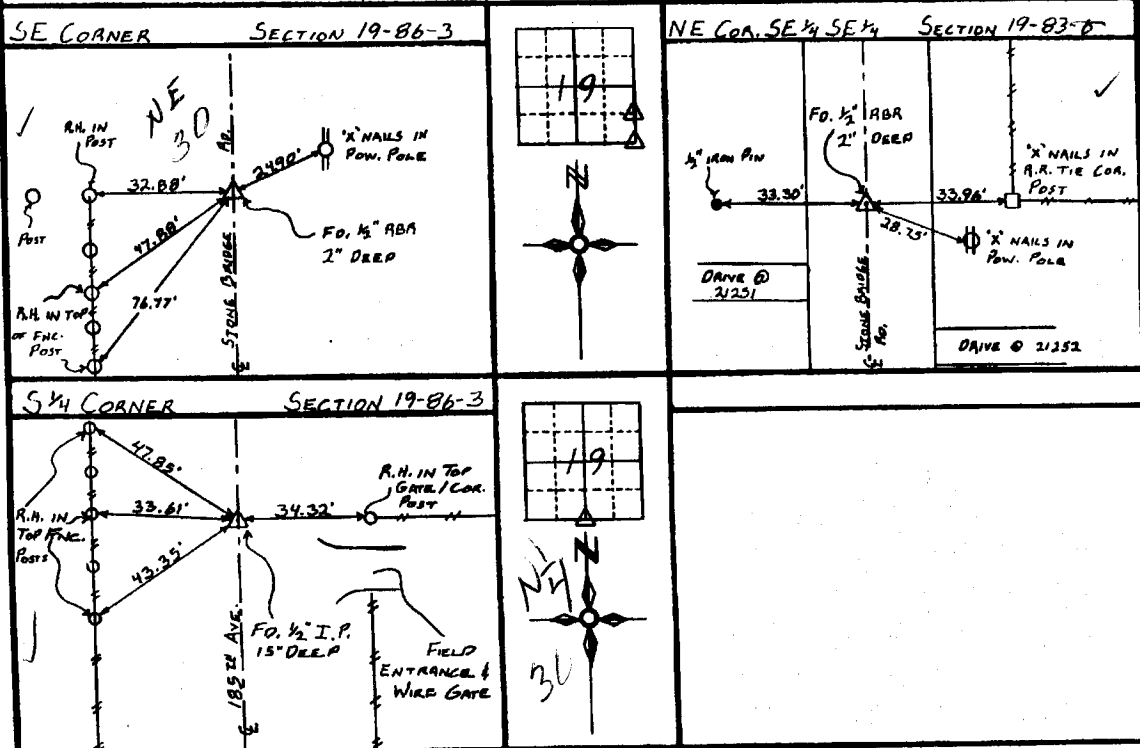
MONUMENT DESCRIPTION AND REMARKS:

SE COR. SECTION 19-86-3: FOUND 1/2" REBAR IN E STONE BRIDGE RD., 2" BELOW SURFACE

NE COR. SE 1/4 SE 1/4 SECTION 19-86-3: FOUND 1/2" REBAR IN E STONE BRIDGE RD., 2" BELOW SURFACE

S 1/4 COR. SECTION 19-86-3: FOUND 1/2" IRON PIN 15" BELOW SURFACE @ 185TH AVE.

RECOVERY TIE DRAWING



86319t-090899
 86330e-090899
 86330c-090899

I, DANIEL J. JOHNSON, - CERTIFY THAT THE CORNER LOCATION(S) SHOWN ON THIS RECORD WERE DETERMINED BY ME OR UNDER MY DIRECTION AND CONTROL AND THAT THIS U.S. PUBLIC LAND SURVEY MONUMENT RECORD IS CORRECT AND COMPLETE TO THE BEST OF MY KNOWLEDGE AND BELIEF.

Daniel Johnson 9-8-99
 DANIEL J. JOHNSON / S. NO. 11954 DATE

My registration renewal date is December 31, 2000

DEVIATION: △ GOVERNMENT CORNER ○ PROPERTY CORNER FOUND ○ 1/2" X 30" W/ L.S. CAP SET - - - EXISTING FENCE LINE - - - PROPERTY LINE	SHEET NO. U.S. PUBLIC LAND SURVEY RECORD PROJECT TITLE: SCHNEITER BOUNDARY	HALL AND HALL ENGINEERS, INC. 208 28TH STREET N.E. CEDAR RAPIDS, IOWA 52402 (319) 362-9548
	SCALE: NONE DATE: 4-25-96	

Lowell

SURVEYOR: DANIEL J. JOHNSON - 209 29TH ST NE - CEDAR RAPIDS, IA 52402 - (319) 362-9548

SECTION CORNER CERTIFICATE

OF

LAND SURVEY MONUMENTS SITUATED IN SECTION 19, TOWNSHIP 86 NORTH, RANGE 3 WEST, OF THE FIFTH PRINCIPAL MERIDIAN, JONES, COUNTY, IOWA.

PREVIOUSLY RECORDED IN BOOK AT PAGE .

REASON FOR PREPARING CERTIFICATE:

- A) THERE IS NO CERTIFICATE FOR THE CORNER ON FILE WITH THE RECORDER OF THE COUNTY IN WHICH THE CORNER IS LOCATED.
- B) CORNER POSITION DIFFERS FROM THAT SHOWN IN THE PUBLIC RECORDS OF THE COUNTY IN WHICH THE CORNER IS LOCATED.
- C) THE CORNER MONUMENT HAS BEEN REPLACED OR MODIFIED.
- D) THE REFERENCE TIES REFERRED TO IN AN EXISTING PUBLIC RECORD ARE INCORRECT.

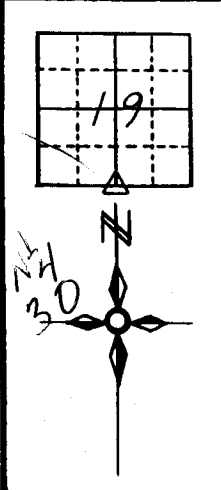
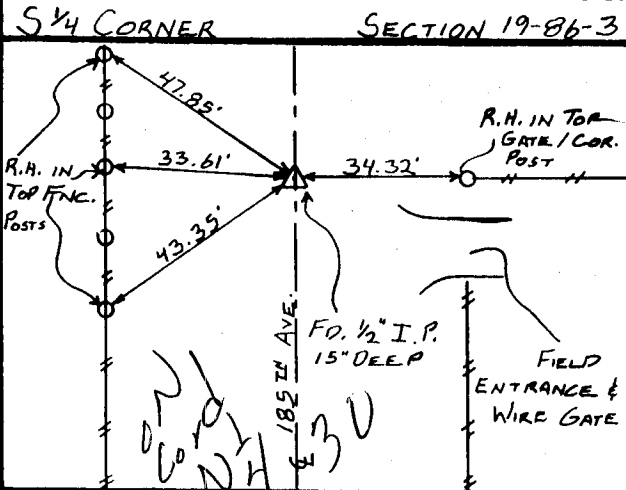
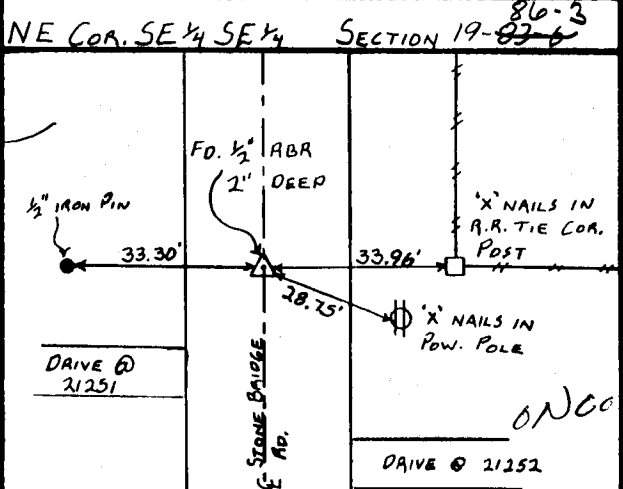
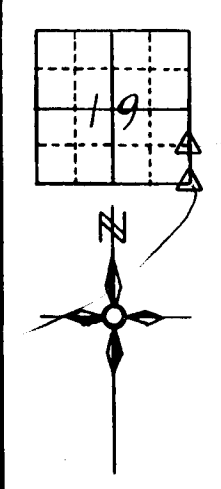
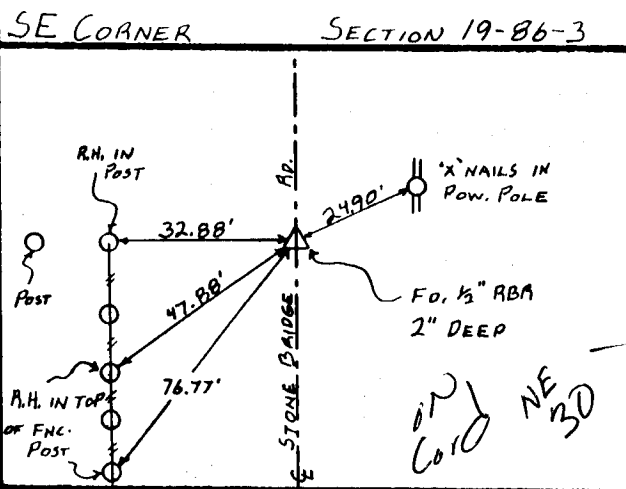
MONUMENT DESCRIPTION AND REMARKS:

SE COR. SECTION 19-86-3: FOUND 1/2" REBAR IN E STONE BRIDGE RD., 2" BELOW SURFACE

NE COR. SE 1/4 SE 1/4 SECTION 19-86-3: FOUND 1/2" REBAR IN E STONE BRIDGE RD., 2" BELOW SURFACE

S 1/4 COR SECTION 19-86-3: FOUND 1/2" IRON PIN 15" BELOW SURFACE E 185TH AVE.

RECOVERY TIE DRAWING



Seal of Daniel J. Johnson, Land Surveyor, No. 11954, Iowa.

86319+ - 121996
86330e - 121996
86330c - 121996

I, DANIEL J. JOHNSON, - CERTIFY THAT THE CORNER LOCATION(S) SHOWN ON THIS RECORD WERE DETERMINED BY ME OR UNDER MY DIRECTION AND CONTROL AND THAT THIS U.S. PUBLIC LAND SURVEY MONUMENT RECORD IS CORRECT AND COMPLETE TO THE BEST OF BY KNOWLEDGE AND BELIEF

Daniel J. Johnson 12-19-96
DANIEL J. JOHNSON L.S. NO 11954 DATE

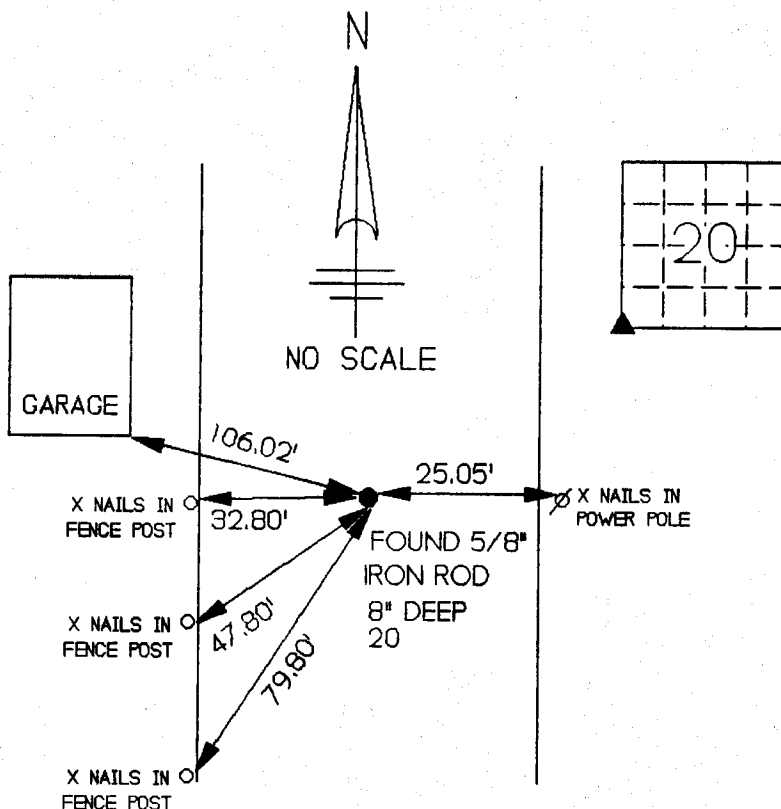
My registration renewal date is December 31, 1998

LEGEND △ GOVERNMENT CORNER ● PROPERTY CORNER FOUND ○ 1/2" X 30" W/ L.S. CAP SET - - - EXISTING FENCE LINE ——— PROPERTY LINE	SHEET TITLE: U.S. PUBLIC LAND SURVEY RECORD PROJECT TITLE: SCHNEITER BOUNDARY	HALL AND HALL ENGINEERS, INC. 209 29TH STREET N.E. CEDAR RAPIDS, IOWA 52402 (319) 362-9548
	DATE: 4-25-96 SCALE: NONE DRAWN BY: JWP CHECKED BY: KJC APPR: A.P.P.	P. NO. 39 P. NO. 5874

UNITED STATES PUBLIC LAND SURVEY CORNER CERTIFICATE

LAND SURVEY MONUMENT LOCATED IN SECTION 20 TOWNSHIP 86
NORTH. RANGE 3 WEST OF THE 5TH P.M. JONES COUNTY, IOWA
PREVIOUSLY RECORDED IN BOOK NA ON PAGE NA.

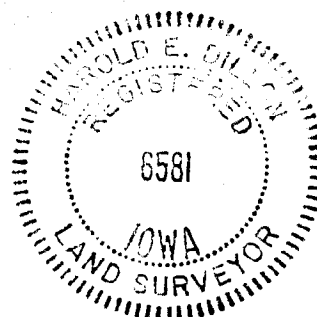
CARD
9-18-90
NE COR 30
M.S.



MONUMENT DESCRIPTION AND NARRATIVE FOUND FROM TIES
ALREADY IN PLACE SW COR SEC 20

I HEREBY CERTIFY THAT THE HEREON DEPICTED SURVEY TIE WORK WAS COMPLETED BY ME OR UNDER MY DIRECT PERSONAL SUPERVISION AND THAT I AM A DULY REGISTERED LAND SURVEYOR UNDER THE LAWS OF THE STATE OF IOWA.

Harold E. Dillon 9/10/90
HAROLD E. DILLON REG# 6581 DATE



86330e - 091090