

2006 0339

FILED
RECORDERS OFFICE
JONES COUNTY IOWA

06 JAN 25 AM 10:14

MARIE KRUTZFIELD
RECORDER No Fee

(CORRECTION CERTIFICATE)

J.D. TJEPKES, LS. JONES COUNTY ENGINEER'S OFFICE, 19501 HWY. 64, ANAMOSA, IOWA, 52205 (319)462-3785

UNITED STATES PUBLIC LAND SURVEY CORNER CERTIFICATE

LAND SURVEY MONUMENTS SITUATED IN SECTION 33, TOWNSHIP 86
NORTH, RANGE 3 WEST OF THE 5TH P.M., JONES COUNTY, IOWA

CORNERS TO BE INDEXED

CORNER CENTER SECTION 33 TOWNSHIP 86N RANGE 3W

OFFICE FILE NO.
86333m_011806.tif



CORRECTION CERTIFICATE:

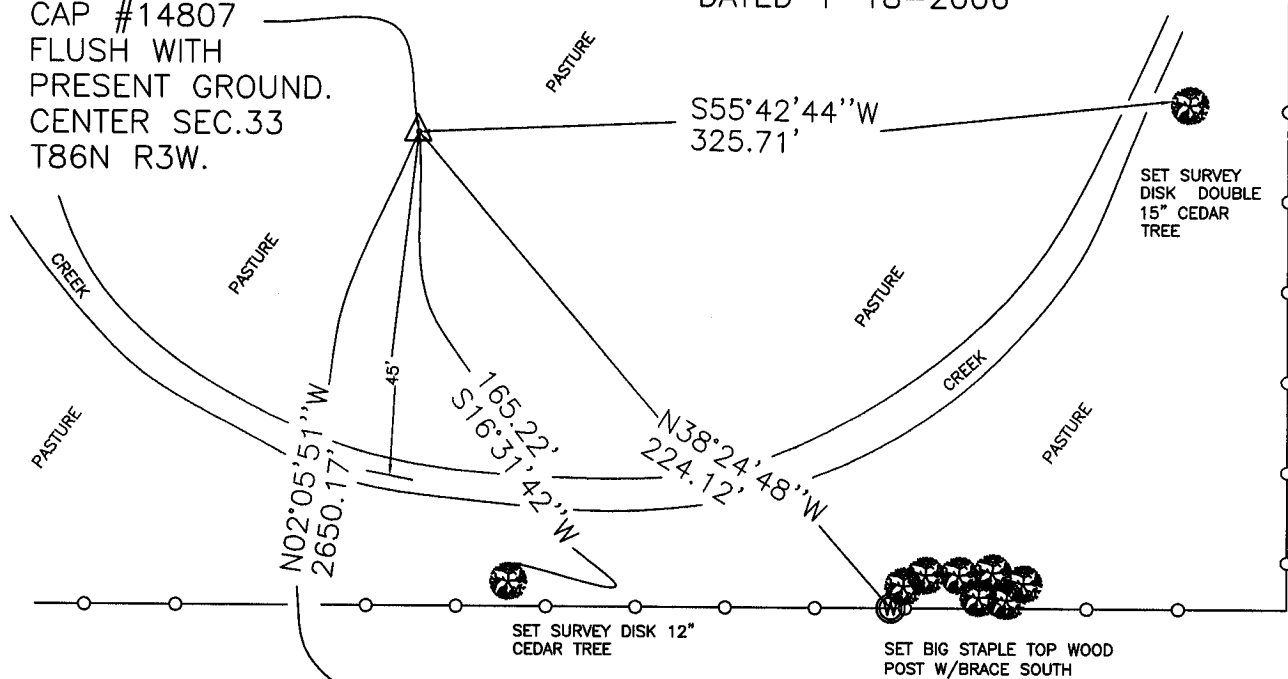
THIS CERTIFICATE WAS ORIGINALLY FILED IN BOOK 2002 AT PAGE 1607 INDICATING SET PIN & CAP LS 14807. PLEASE NOTE FOUND ERROR IN ORIGINAL SURVEY DATA. RESET PIN & CAP #14807.

FIELD NOTES:
BOOK 362
PAGE 46
1-18-2006

1114

REVISED FIELD NOTES
JONES COUNTY PROJECT NO.
LOT-2, BOOK NO. 362, PAGE 46
DATED 1-18-2006

SET 5/8"X48"
REBAR W/ORANGE
CAP #14807
FLUSH WITH
PRESENT GROUND.
CENTER SEC.33
T86N R3W.



FD CONC. MONU. PER TIES
S1/4 SEC 33-86-3

2002 1607

FILED
RECORDERS OFFICE
JONES COUNTY IOWA

02 APR 26 AM 9:49

86333m-052302

MARIE KRUTZFIELD
RECORDER *NO FEE*

J.D. Tjepkes, LS. JONES COUNTY ENGINEER'S OFFICE, 19501 HWY. 64, ANAMOSA, IOWA, 52205 (319)462-3785

UNITED STATES PUBLIC LAND SURVEY CORNER CERTIFICATE

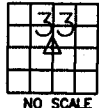
LAND SURVEY MONUMENTS SITUATED IN SECTION 33, TOWNSHIP 86
NORTH, RANGE 3 WEST OF THE 5TH P.M., JONES COUNTY, IOWA

CORNERS TO BE INDEXED

CORNER SECTION TOWNSHIP RANGE
CENTER 33 T86N R3W

OFFICE FILE NO.

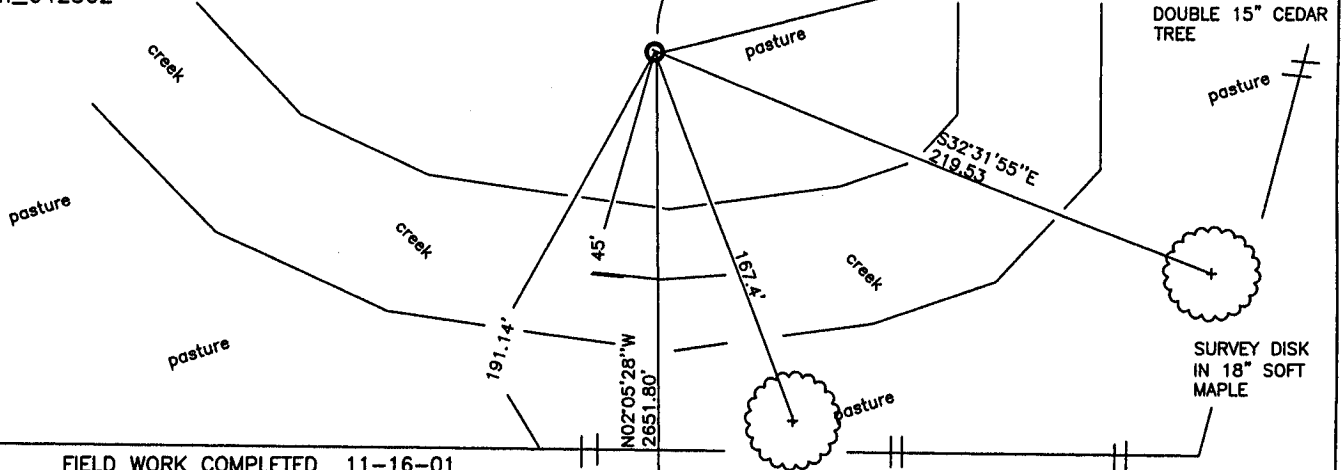
86333m_042502



CENTER SEC.33
SET 5/8"x4" REBAR
W/CAP# 14708.
BURIED 1'
SET SMALL SIGN
ALONG SIDE OF PIN

N55°59'04"E
325.23'

SURVEY DISK IN
DOUBLE 15" CEDAR
TREE



FIELD WORK COMPLETED 11-16-01

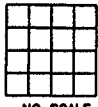
PREVIOUSLY RECORDED IN BOOK NA, PAGE NA
MONUMENT DESCRIPTION AND HOW ESTABLISHED
PER BREAK DOWN OF SECTION SET 5/8"x4" REBAR W/CAP #14807 45'
NORTH OF CREEK AND 191' NORTH OF EAST-WEST FENCE IN PASTURE.
SET SMALL SIGN ALONG SIDE OF PIN

S1/4 SEC.33
FD.CONCRETE MONUMENT

CORNERS TO BE INDEXED

CORNER SECTION TOWNSHIP RANGE

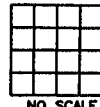
OFFICE FILE NO.



CORNERS TO BE INDEXED

CORNER SECTION TOWNSHIP RANGE

OFFICE FILE NO.



PREVIOUSLY RECORDED IN BOOK _____, PAGE _____
MONUMENT DESCRIPTION AND HOW ESTABLISHED _____

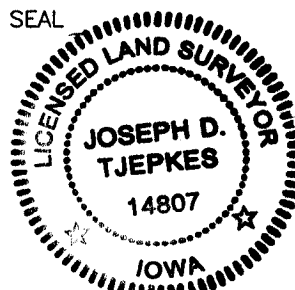
PREVIOUSLY RECORDED IN BOOK _____, PAGE _____
MONUMENT DESCRIPTION AND HOW ESTABLISHED _____

I hereby declare that this plat, survey or report was made by me or under my direct personal supervision and that I am a duly registered Land Surveyor under the laws of the State of Iowa.

Signed:

J. D. Tjepkes 4-25-02

SEAL



J.D. Tjepkes LS 14807
JONES COUNTY
ENGINEER'S OFFICE

19501 HWY. 64,
ANAMOSA, IOWA,
52205 (319)462-3785

Joseph D. Tjepkes L.S. Iowa Reg. No. 14807
My Registration Renewal Date is December 31, 2002