

Lowell

97 MAY 20 AM 10:06
 BOOK 425 PAGE 207
 LINDA J. BENDIXEN
 RECORDER 6.00 pd

M.M.S. CONSULTANTS INC., 1917 S. GILBERT ST., IOWA CITY, IA 52240 PH 319-351-8282

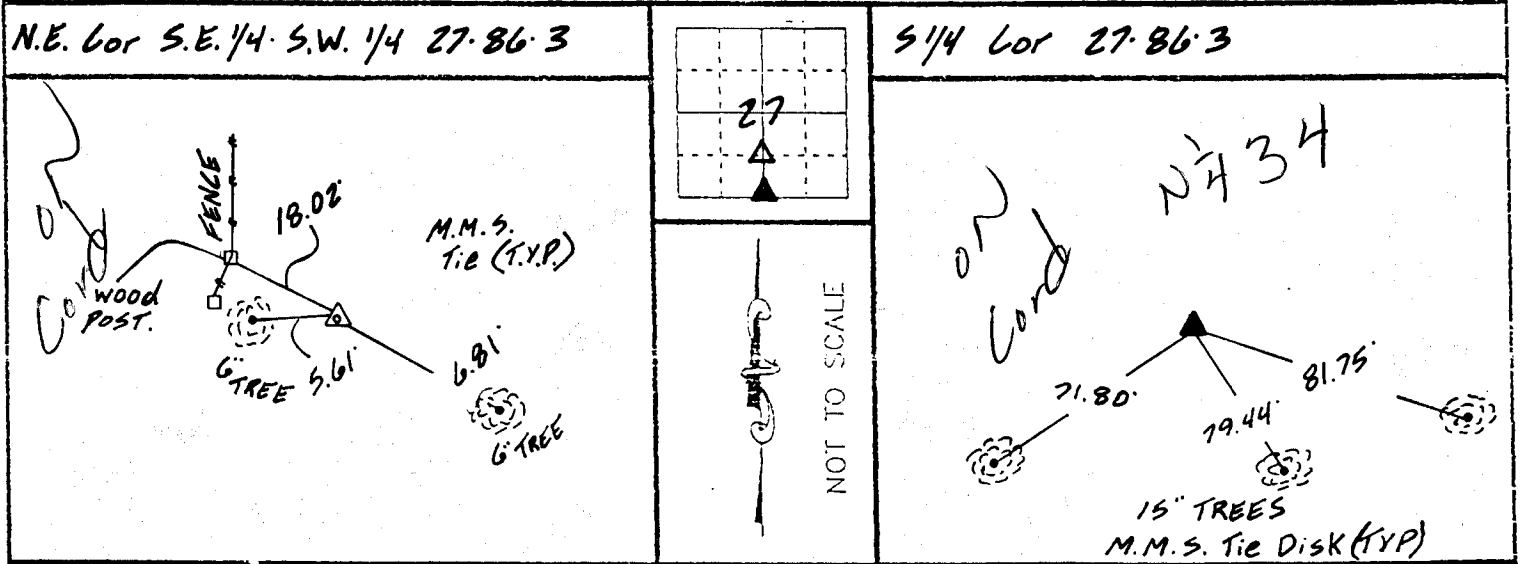
U.S. PUBLIC LAND SURVEY CORNER CERTIFICATE

FOR LAND SURVEY MONUMENTS SITUATED IN SECTION 27, TOWNSHIP 86 NORTH,
 RANGE 3 WEST, OF THE FIFTH PRINCIPAL MERIDIAN, JONES, COUNTY, IOWA.

REASON FOR PREPARING CERTIFICATE:

- A) THERE IS NO CERTIFICATE FOR THE CORNER ON FILE WITH THE RECORDER.
- B) CORNER POSITION DIFFERS FROM PREVIOUSLY RECORDED CERTIFICATE RECORDED IN BOOK ___ AT PAGE ___

RECOVERY TIE DRAWING



MONUMENT DESCRIPTION AND REMARKS :

MONUMENT DESCRIPTION AND REMARKS :

N.E. Cor S.E. 1/4 S.W. 1/4 27-86-3
 SET 5/8" pin midway between
 Center of Section and S 1/4
 Corner.

S 1/4 Cor 27-86-3 Found
 I.P.O.T. Mon 5:6" Deep
 SET 5/8" pin over top.

I HEREBY CERTIFY THAT THE CORNER LOCATION(S) SHOWN
 ON THIS RECORD WERE DETERMINED BY ME OR UNDER MY
 DIRECT PERSONAL SUPERVISION AND THAT THIS U.S. PUBLIC
 LAND SURVEY MONUMENT RECORD IS CORRECT AND COMPLETE
 TO THE BEST OF MY KNOWLEDGE AND BELIEF.



Glen D. Meisner 5-19-97
 Glen D. Meisner P.E. & L.S. Lic. No. 8165
 My Biennial License expires December 31, 1997

<p>LEGEND</p> <ul style="list-style-type: none"> ▲ GOVERNMENT CORNER ○ 5/8" TIE PIN SET --- CENTERLINE - - - EXISTING FENCE LINE --- R.O.W. LINE 	<p>SHEET TITLE: U.S. PUBLIC LAND SURVEY RECORD</p> <p>PROJECT TITLE: STEPHENS</p>	<p>MMS CONSULTANTS, INC. Iowa City, Iowa (319) 351-8282</p>
<p>NO. <u>N.L.R.</u> REC'D. <u>G.D.M.</u> BY <u>G.D.M.</u> DATE <u>4-21-97</u> SCALE</p>	<p>NO. <u>459</u> P. NO. <u>4897-001</u></p>	