

2006 0152

FILED  
RECORDERS OFFICE  
JONES COUNTY IOWA

06 JAN 12 AM 11:47

MARIE KRUTZFELD  
RECORDER 700121

Prepared by: Wm. Burger Land Surveyors 510 3rd Street West Court, Worthington, Iowa Phone 563 - 855 2028

### UNITED STATES PUBLIC LAND SURVEY CORNER CERTIFICATE

Land Survey Monuments situated in Section 35, Township 86N, Range 3W, of the Fifth Principal Meridian, Jones County, Iowa. Previously recorded in N/A in the Office of the County Recorder

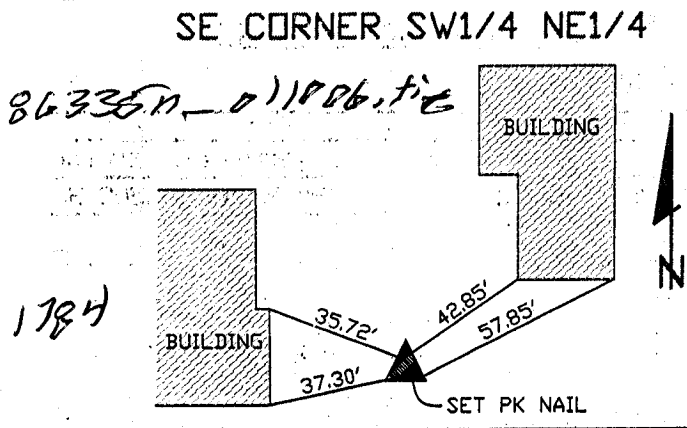
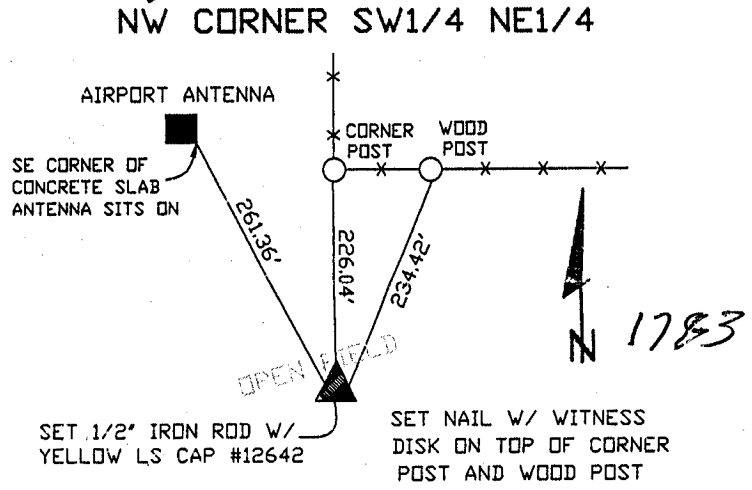
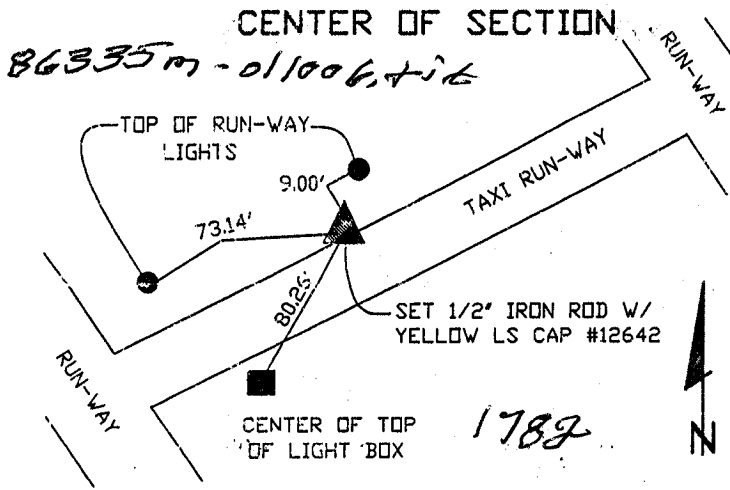
Monument Description and Remarks: (No Corner Certificates found at the County Recorders Office)

**CENTER OF SECTION - SET 1/2" IRON ROD W/ YELLOW LS CAP #12642 - USED INFORMATION FROM PLAT PREVIOUSLY RECORDED IN THE OFFICE OF THE JONES COUNTY RECORDER INST. # 1999-1215**

**NW CORNER SW1/4 NE1/4 - SET 1/2" IRON ROD W/ YELLOW LS CAP #12642 - SET ON LINE AND MIDWAY BETWEEN THE CENTER OF SECTION AND THE N1/4 CORNER**

**SE CORNER SW1/4 NE1/4 - SET PK NAIL - SET ON LINE AND MIDWAY BETWEEN THE CENTER OF SECTION AND THE E1/4 CORNER**

PLAN VIEW 86335h-011006.tif



CORNERS TO BE INDEXED

CENTER OF SECTION 35 86N 3W