

COPY

Jones County Iowa  
 Marie Krutzfield, Recorder  
 Fee Book 2010 1569

06/16/2010 @1054AM  
 ZSC SEC COR CERT  
 Book: Page: # Pages: 1  
 Total Fees: \$0.00

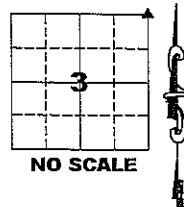
PREPARED BY

CLARENCE J. WALTON, JONES COUNTY ENGINEER'S OFFICE, 19501 HWY. 64, ANAMOSA, IOWA, 52205 (319) 462-3785

# UNITED STATES PUBLIC LAND SURVEY CORNER CERTIFICATE

LAND SURVEY MONUMENTS SITUATED IN SECTION 3, TOWNSHIP 86 NORTH,  
 RANGE 3 WEST OF THE 5TH PRINCIPAL MERIDIAN, JONES COUNTY, IOWA.

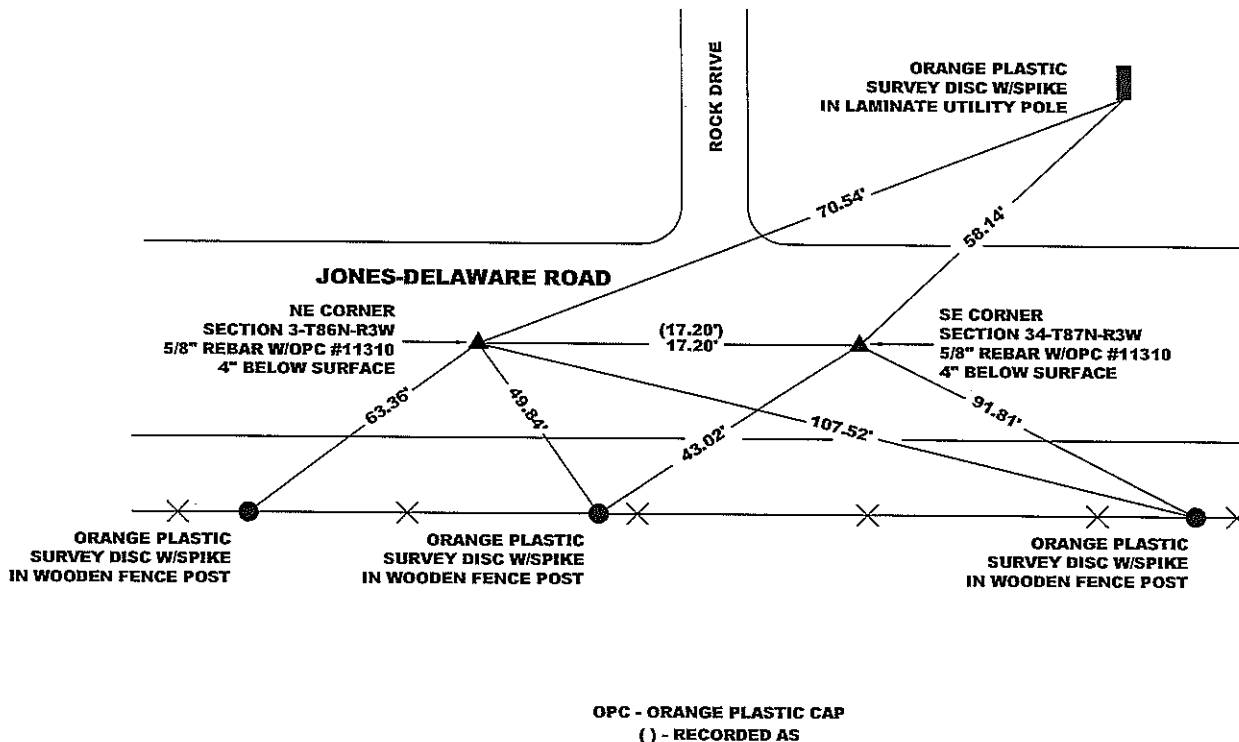
CORNER SECTION TOWNSHIP RANGE  
 NE 3 86N 3W



OFFICE FILE NO.

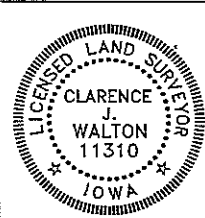
STATE PLANE COORDINATE  
 NAD 83 IOWA NORTH  
 N  
 E

NOTE:  
 THE STATE PLANE COORDINATE AS INDICATED IS FOR CONVENIENCE ONLY.  
 THE TIES AS SHOWN SHOULD BE USED TO REPLACE THE CORNER, IF  
 DESTROYED



PREVIOUSLY RECORDED IN BOOK 2002, PAGE 0740

MONUMENT DESCRIPTION AND HOW ESTABLISHED REPLACED CORNER AFTER ROAD CONSTRUCTION W/5/8" REBAR W/OPC "JONES COUNTY 11310"  
AT POSITION AS FOUND DURING PRELIMINARY SURVEY FOR ROAD GRADING PROJECT.



I hereby certify that this land surveying document and the related survey work was performed by me or under my direct personal supervision and that I am a duly registered Land Surveyor under the laws of the State of Iowa.  
 Signed: *Clarence J. Walton* 6/16/10  
 Clarence J. Walton, L.S.  
 My Registration Renewal Date is December 31, 2011  
 Iowa License Number 11310  
 Pages or sheets covered by this seal: 1 of 1.

- A. THERE IS NO CERTIFICATE FOR THE CORNER ON FILE WITH THE RECORDER OF THE COUNTY IN WHICH THE CORNER IS LOCATED.
- B. THE CORNER MONUMENT HAS BEEN REPLACED OR MODIFIED.
- C. THE SURVEYOR IN RESPONSIBLE CHARGE OF THE LAND SURVEYING ACCEPTS A CORNER POSITION THAT DIFFERS FROM THAT SHOWN IN THE PUBLIC RECORDS OF THE COUNTY IN WHICH THE CORNER IS LOCATED.
- D. THE REFERENCE TIES REFERRED TO IN AN EXISTING PUBLIC RECORD NO LONGER EXIST.

CORNERS TO BE INDEXED

CORNER	SECTION	TOWNSHIP	RANGE
NE CORNER	3	86N	3W
NW CORNER	2	86N	3W

JONES COUNTY ENGINEER'S OFFICE



19501 HWY. 64, ANAMOSA, IOWA 52205  
 (319) 462-3785



Book 2007 Page 3933

Document 2007 3933 Type 06 007 Pages 1  
Date 12/07/2007 Time 12:38:53PM  
Rec Amt \$7.00

DEBORAH L PEYTON, RECORDER/REGISTRAR  
DELAWARE COUNTY IOWA

*Handwritten:* (X) My  
Not An Engineer

PREPARED BY

CLARENCE J. WALTON, JONES COUNTY ENGINEER'S OFFICE, 19501 HWY. 64, ANAMOSA, IOWA, 52205 (319) 462-3785

# UNITED STATES PUBLIC LAND SURVEY CORNER CERTIFICATE

LAND SURVEY MONUMENTS SITUATED IN SECTION 34, TOWNSHIP 87 NORTH,  
RANGE 3 WEST OF THE 5TH PRINCIPAL MERIDIAN, DELAWARE COUNTY, IOWA.

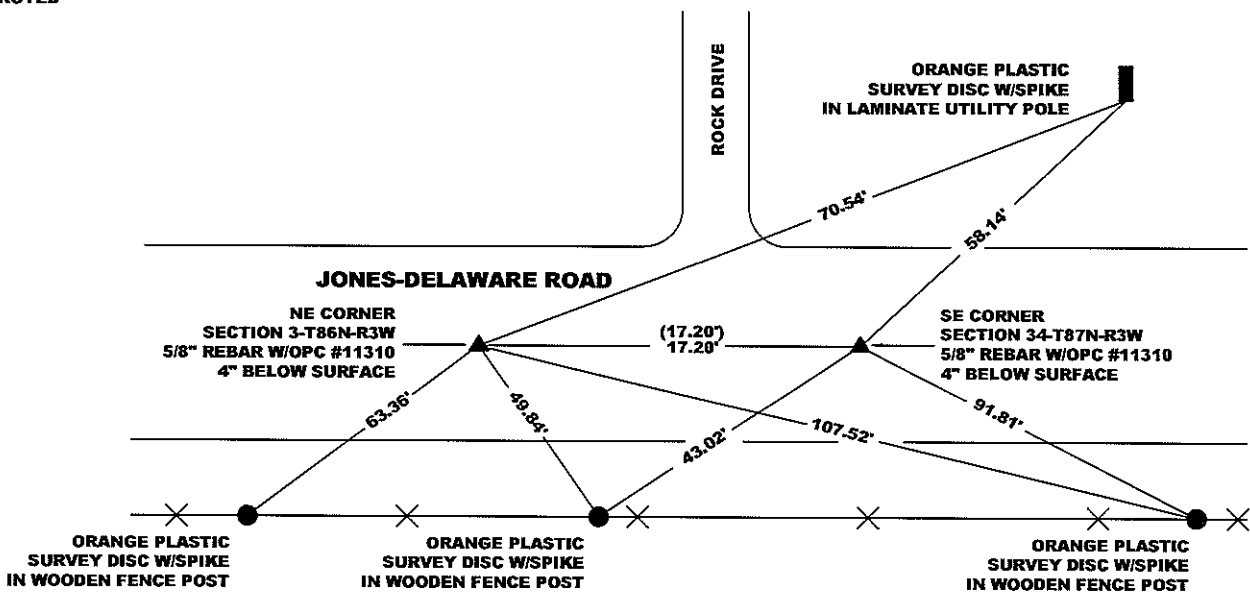
CORNER SECTION TOWNSHIP RANGE  
SE 34 87N 3W



OFFICE FILE NO.

STATE PLANE COORDINATE  
NAD 83 IOWA NORTH  
N  
E

NOTE:  
THE STATE PLANE COORDINATE AS INDICATED IS FOR CONVENIENCE ONLY.  
THE TIES AS SHOWN SHOULD BE USED TO REPLACE THE CORNER, IF  
DESTROYED



OPC - ORANGE PLASTIC CAP  
( ) - RECORDED AS

PREVIOUSLY RECORDED IN BOOK 2002, PAGE 900

MONUMENT DESCRIPTION AND HOW ESTABLISHED REPLACED CORNER AFTER ROAD CONSTRUCTION W/5/8" REBAR W/OPC "JONES COUNTY 11310"  
AT POSITION AS FOUND DURING PRELIMINARY SURVEY FOR ROAD GRADING PROJECT.



I hereby certify that this land surveying document  
and the related survey work was performed by me  
or under my direct personal supervision and that  
I am a duly registered Land Surveyor under the laws  
of the State of Iowa.

Signed: *Clarence J. Walton* 12/4/07  
Clarence J. Walton, L.S.  
My Registration Renewal Date is December 31, 2007  
Iowa License Number 11310  
Pages or sheets covered by this seal: 1 of 1.

- A. THERE IS NO CERTIFICATE FOR THE CORNER ON FILE WITH THE RECORDER OF THE COUNTY IN WHICH THE CORNER IS LOCATED.
- B. THE CORNER MONUMENT HAS BEEN REPLACED OR MODIFIED.
- C. THE SURVEYOR IN RESPONSIBLE CHARGE OF THE LAND SURVEYING ACCEPTS A CORNER POSITION THAT DIFFERS FROM THAT SHOWN IN THE PUBLIC RECORDS OF THE COUNTY IN WHICH THE CORNER IS LOCATED.
- D. THE REFERENCE TIES REFERRED TO IN AN EXISTING PUBLIC RECORD NO LONGER EXIST.

CORNERS TO BE INDEXED

CORNER	SECTION	TOWNSHIP	RANGE
SE CORNER	34	87N	3W
SW CORNER	35	87N	3W

## JONES COUNTY ENGINEER'S OFFICE



19501 HWY. 64, ANAMOSA, IOWA 52205  
(319) 462-3785

2002 0740

FILED  
RECORDERS OFFICE  
JONES COUNTY IOWA

02 FEB 27 AM 8:51

MARIE KRUTZFIELD  
RECORDER NO EEE

J.D. TJEPKES, LS. JONES COUNTY ENGINEER'S OFFICE, 19501 HWY. 64, ANAMOSA, IOWA, 52205 (319)462-3785

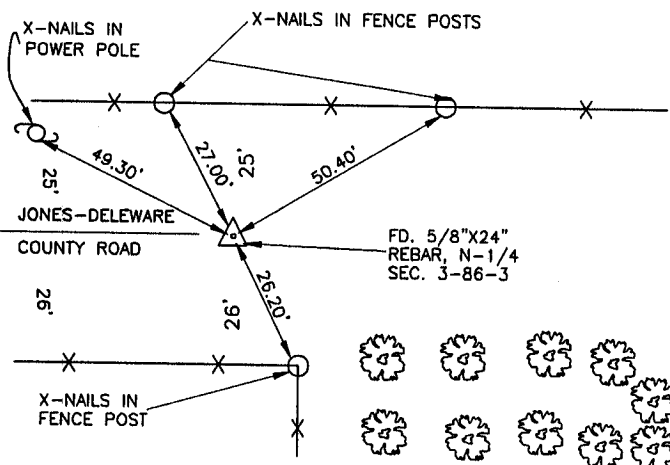
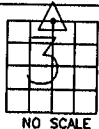
# UNITED STATES PUBLIC LAND SURVEY CORNER CERTIFICATE

LAND SURVEY MONUMENTS SITUATED IN SECTION 3, TOWNSHIP 86  
NORTH, RANGE 3 WEST OF THE 5TH P.M., JONES COUNTY, IOWA

### CORNERS TO BE INDEXED

CORNER SECTION TOWNSHIP RANGE  
N-1/4 3 86N 3W

OFFICE FILE NO.  
86303c\_021202

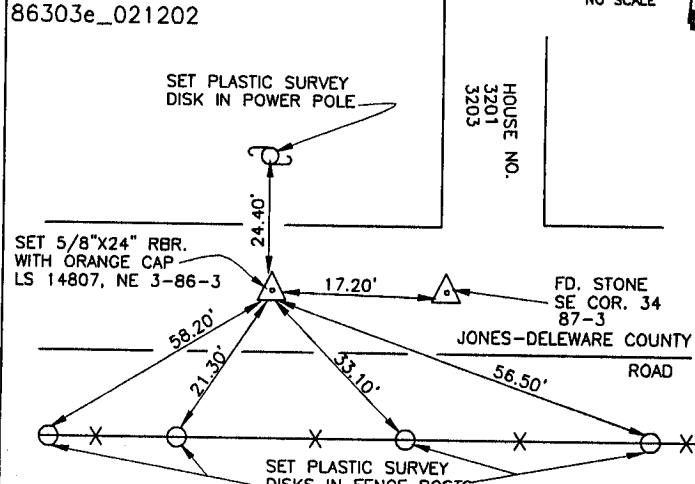
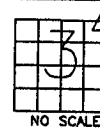


PREVIOUSLY RECORDED IN BOOK N/A, PAGE N/A.  
MONUMENT DESCRIPTION AND HOW ESTABLISHED JONES COUNTY SURVEY CREW FOUND 7"X10"X14" LIMESTONE 15" BELOW SURFACE IN SEPT. 1996, LOWERED STONE TO PROTECT IT, SET 5/8"X24" REBAR ABOVE, SET REFERENCE POINTS AND TIED OUT AS INDICATED NORTH QUARTER COR. SEC. 3, T86N, R3W, 5TH PM, JONES COUNTY, IOWA. NOTE: REFERENCE POINTS STILL IN PLACE.

### CORNERS TO BE INDEXED

CORNER SECTION TOWNSHIP RANGE  
NE 3 86N 3W

OFFICE FILE NO.  
86303e\_021202

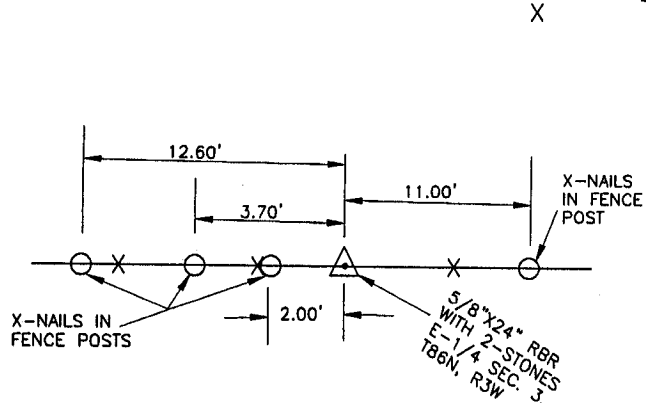
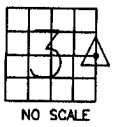


PREVIOUSLY RECORDED IN BOOK N/A, PAGE N/A.  
MONUMENT DESCRIPTION AND HOW ESTABLISHED SET 5/8"X24" RBR. WITH ORANGE CAP LS 14807, ON TOWNSHIP LINE WITH SINGLE PROPORTION METHOD. SET REFERENCE POINTS AND TIED OUT AS INDICATED. NORTHEAST CORNER SECTION 3, TOWNSHIP 86 NORTH, RANGE 3 WEST, 5TH PM, JONES COUNTY, IOWA

### CORNERS TO BE INDEXED

CORNER SECTION TOWNSHIP RANGE  
E-1/4 3 86N 3W

OFFICE FILE NO.  
86303o\_021202

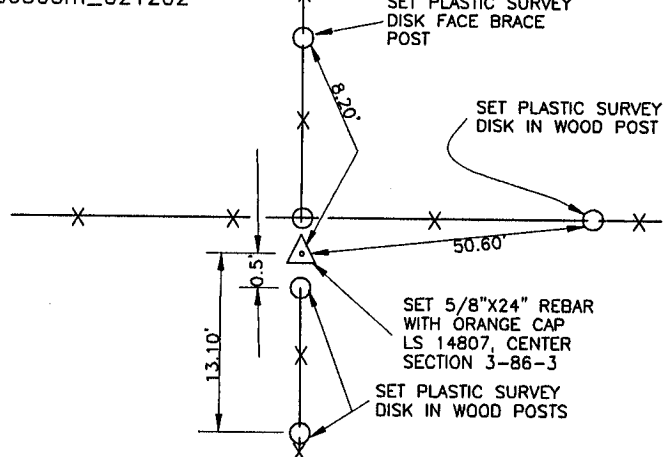
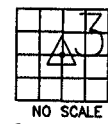


PREVIOUSLY RECORDED IN BOOK N/A, PAGE N/A (1997)  
MONUMENT DESCRIPTION AND HOW ESTABLISHED JONES COUNTY SURVEY CREW FOUND 2-STONES (5"X6"X15" & 4"X8"X14") ON END UNDER FENCE 1' BELOW SURFACE. SET 5/8"X24" REBAR BETWEEN STONES & TIED OUT AS INDICATED. CHECKED TIES & SET ORANGE CAP ON REBAR LS 14807, 2-12-02, EAST QUARTER COR. SEC. 3, T86N, R3W, 5TH PM, JONES COUNTY, IOWA

### CORNERS TO BE INDEXED

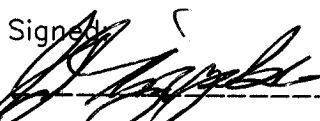
CORNER SECTION TOWNSHIP RANGE  
CENTER 3 86N 3W

OFFICE FILE NO.  
86303m\_021202

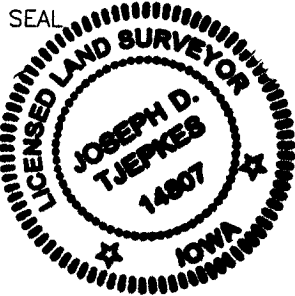


PREVIOUSLY RECORDED IN BOOK N/A, PAGE N/A.  
MONUMENT DESCRIPTION AND HOW ESTABLISHED SET 5/8"X24" REBAR WITH ORANGE CAP LS 14807 (PER PHYSICAL EVIDENCE) AT INTERSECTION OF FENCES. STRAIGHT LINE INTERSECTION OF OPPOSITE QUARTER CORNERS FALLS 10' NORTH, 7' EAST. SET REFERENCE POINTS AND TIED OUT AS INDICATED. CENTER SECTION 3, TOWNSHIP 86 NORTH, RANGE 3 WEST, 5TH PM, JONES COUNTY, IOWA.

I hereby declare that this plat, survey or report was made by me or under my direct personal supervision and that I am a duly registered Land Surveyor under the laws of the State of Iowa.

Signed  2-21-02

Joseph D. Tjepkes L.S. Iowa Reg. No. 14807  
My Registration Renewal Date is December 31, 2002



J.D. TJEPKES LS 14807  
JONES COUNTY  
ENGINEER'S OFFICE

19501 HWY. 64,  
ANAMOSA, IOWA,  
52205 (319)462-3785

Not to Engineer

BOOK ~~N/A~~ PAGE 900  
DEBORAH L. PEYTON  
DELAWARE CO. RECORDER  
N/A

2002 HR 12 AM 9:27

DELAWARE COUNTY IOWA  
FILED

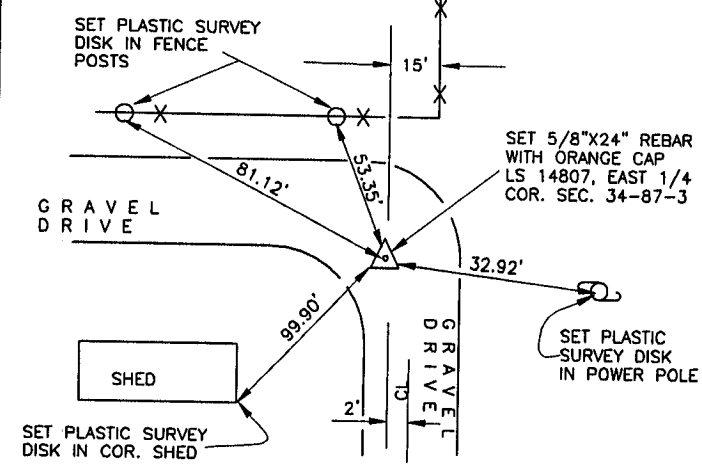
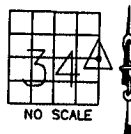
J.D. Tjepkes, LS. JONES COUNTY ENGINEER'S OFFICE, 19501 HWY. 64, ANAMOSA, IOWA, 52205 (319)462-3785

# UNITED STATES PUBLIC LAND SURVEY CORNER CERTIFICATE

LAND SURVEY MONUMENTS SITUATED IN SECTION 34, TOWNSHIP 87  
NORTH, RANGE 3 WEST OF THE 5TH P.M., DELAWARE COUNTY, IOWA

### CORNERS TO BE INDEXED

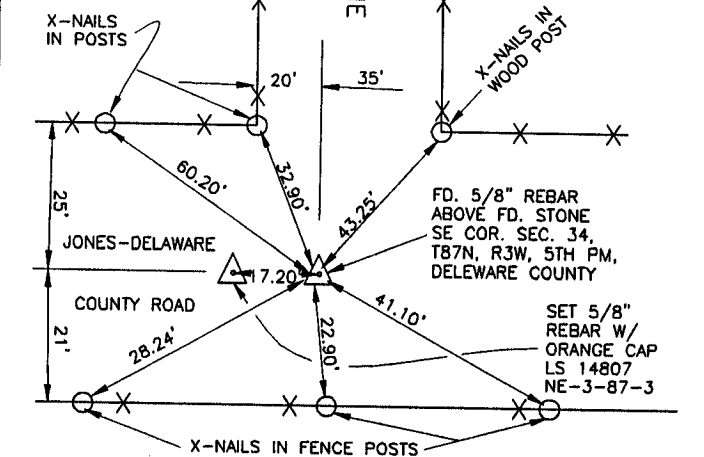
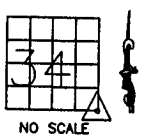
CORNER SECTION TOWNSHIP RANGE  
E-1/4 34 87N 3W  
OFFICE FILE NO. 87334o\_021202



PREVIOUSLY RECORDED IN BOOK N/A, PAGE N/A.  
MONUMENT DESCRIPTION AND HOW ESTABLISHED SET 5/8"X24"  
REBAR WITH ORANGE CAP LS 14807 ON SPLIT AND ON LINE SE  
COR. 34 TO NE COR. 34, SET REFERENCE POINTS AND TIED OUT  
AS INDICATED. EAST QUARTER CORNER SECTION 34, TOWNSHIP  
87 NORTH, RANGE 3 WEST, 5TH PM, DELAWARE COUNTY, IOWA

### CORNERS TO BE INDEXED

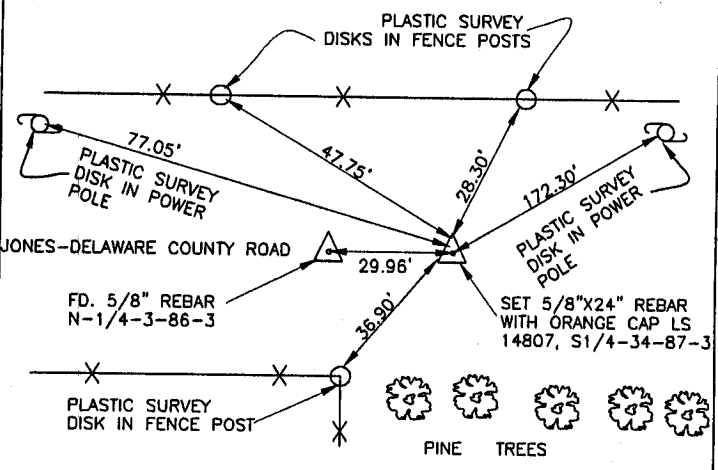
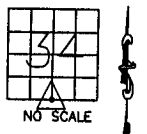
CORNER SECTION TOWNSHIP RANGE  
SE-COR. 34 87N 3W  
OFFICE FILE NO. 87334y\_021202



PREVIOUSLY RECORDED IN BOOK N/A, PAGE N/A.  
MONUMENT DESCRIPTION AND HOW ESTABLISHED JONES COUNTY  
SURVEY CREW FOUND 3"X6"X10" STONE ON END 10" BELOW THE ROAD  
SURFACE IN AUG. OF 1996, THEY LOWERED THE STONE TO PROTECT IT AND  
SET A 5/8" REBAR ABOVE. SET REFERENCE POINTS AND TIED OUT AS INDICATED.  
REFERENCE POINTS ARE STILL IN PLACE 2-02-02. SE COR. SEC. 34,  
T87N, R3W, 5TH PM, DELAWARE COUNTY, IOWA

### CORNERS TO BE INDEXED

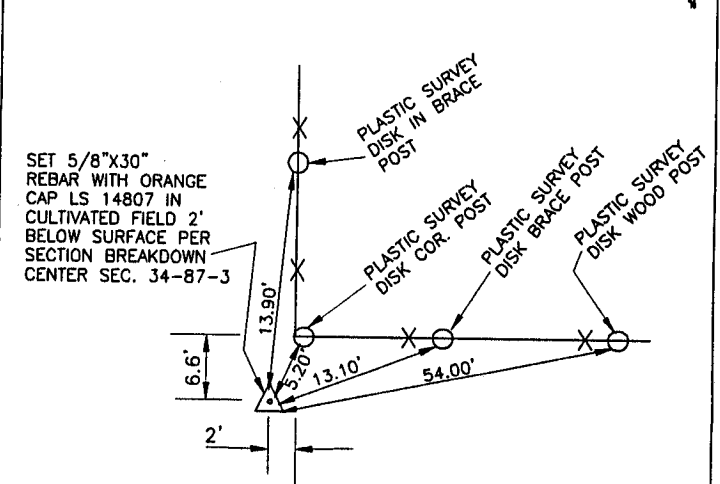
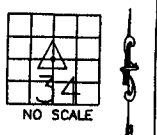
CORNER SECTION TOWNSHIP RANGE  
S-1/4 34 87N 3W  
OFFICE FILE NO. 87334w\_021202



PREVIOUSLY RECORDED IN BOOK N/A, PAGE N/A.  
MONUMENT DESCRIPTION AND HOW ESTABLISHED SET 5/8"X24"  
REBAR WITH ORANGE CAP LS 14807 ON TOWNSHIP LINE AT SPLIT OF SECTION  
CORNERS AND ORIGINAL CHAINING NOTES. SET REFERENCE POINTS AND TIED  
OUT AS INDICATED. SOUTH QUARTER CORNER SECTION 34, TOWNSHIP 87  
NORTH, RANGE 3 WEST, 5TH PM, DELAWARE COUNTY, IOWA.

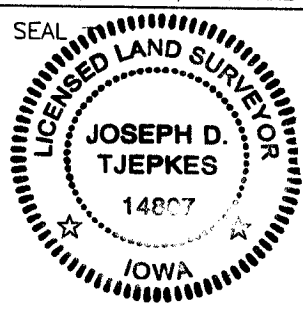
### CORNERS TO BE INDEXED

CORNER SECTION TOWNSHIP RANGE  
CENTER 34 87N 3W  
OFFICE FILE NO. 87334m\_021202



PREVIOUSLY RECORDED IN BOOK N/A, PAGE N/A.  
MONUMENT DESCRIPTION AND HOW ESTABLISHED SET 5/8"X30"  
REBAR WITH ORANGE CAP LS 14807 PER SECTION BREAKDOWN 2'  
BELOW SURFACE IN CULTIVATED FIELD. SET REFERENCE POINTS AND  
TIED OUT AS INDICATED. CENTER SECTION 34, TOWNSHIP 87 NORTH,  
RANGE 3 WEST, 5TH PM, DELAWARE COUNTY, IOWA.

I hereby declare that this plat, survey or report was made by me or under my direct personal supervision and that I am a duly registered Land Surveyor under the laws of the State of Iowa.  
Signed: *J.D. Tjepkes* 2.21.02  
Joseph D. Tjepkes L.S. Iowa Reg. No. 14807  
My Registration Renewal Date is December 31, 2002



J.D. Tjepkes LS 14807  
JONES COUNTY  
ENGINEER'S OFFICE  
19501 HWY. 64,  
ANAMOSA, IOWA,  
52205 (319)462-3785