

2002 0743

FILED
RECORDERS OFFICE
JONES COUNTY IOWA

02 FEB 27 AM 8:54

MARIE KRUTZFIELD **NO FEE**
RECORDED

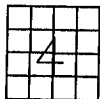
J.D. TJEPKES, LS. JONES COUNTY ENGINEER'S OFFICE 19501 HWY. 64, ANAMOSA, IOWA, 52205 (319)462-3785

UNITED STATES PUBLIC LAND SURVEY CORNER CERTIFICATE

LAND SURVEY MONUMENTS SITUATED IN SECTION 4, TOWNSHIP 86
NORTH, RANGE 3 WEST OF THE 5TH P.M., JONES COUNTY, IOWA

CORNERS TO BE INDEXED

CORNER SECTION TOWNSHIP RANGE

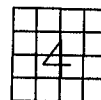


OFFICE FILE NO. _____

PREVIOUSLY RECORDED IN BOOK _____, PAGE _____
MONUMENT DESCRIPTION AND HOW ESTABLISHED _____

CORNERS TO BE INDEXED

CORNER SECTION TOWNSHIP RANGE

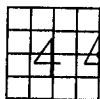


OFFICE FILE NO. _____

PREVIOUSLY RECORDED IN BOOK _____, PAGE _____
MONUMENT DESCRIPTION AND HOW ESTABLISHED _____

CORNERS TO BE INDEXED

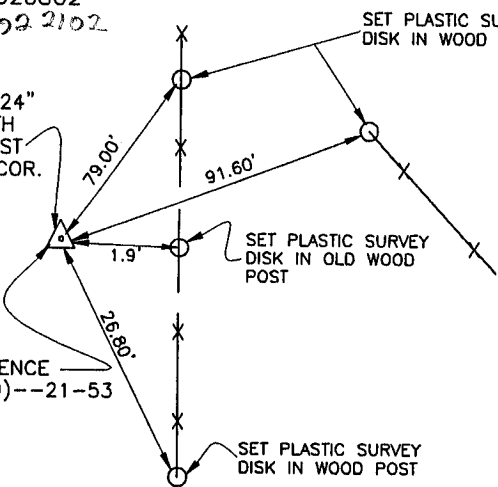
CORNER SECTION TOWNSHIP RANGE



OFFICE FILE NO. _____

86304o-020802
02 2102

FD. 5/8"x24"
REBAR WITH
STONE, EAST
QUARTER COR.
4-86-3



ENGINEER'S TIES

PREVIOUSLY RECORDED IN BOOK N/A, PAGE N/A
MONUMENT DESCRIPTION AND HOW ESTABLISHED FD. 5/8"x24"
REBAR ALONGSIDE STONE FLUSH WITH SURFACE PER COUNTY
ENGINEER'S TIES. SET REFERENCE POINTS AND TIED OUT AS
INDICATED. EAST QUARTER SECTION 4, T86N, R3W, 5TH P.M., JONES
COUNTY, IOWA

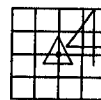
I hereby declare that this plat, survey or report
was made by me or under my direct personal
supervision and that I am a duly registered Land
Surveyor under the laws of the State of Iowa.

Signed _____
2-21-02

Joseph D. Tjepkes L.S. Iowa Reg. No. 14807
My Registration Renewal Date is December 31, 2002

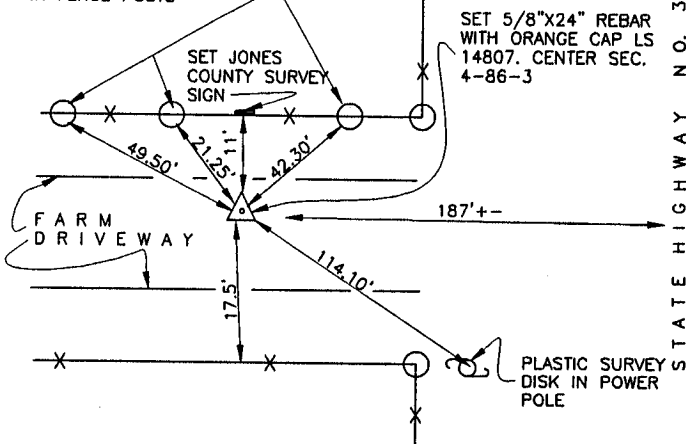
CORNERS TO BE INDEXED

CORNER SECTION TOWNSHIP RANGE

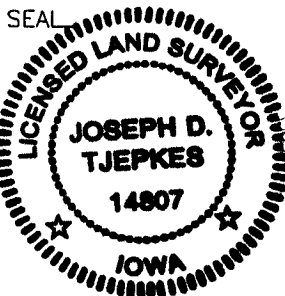


OFFICE FILE NO. _____

86304m-020802
02 2102



PREVIOUSLY RECORDED IN BOOK N/A, PAGE N/A
MONUMENT DESCRIPTION AND HOW ESTABLISHED SET 5/8"x24"
REBAR WITH ORANGE CAP LS 14807 PER SECTION BREAKDOWN.
SET REFERENCE POINTS AND TIED OUT AS INDICATED. CENTER
SECTION 4, TOWNSHIP 86 NORTH, RANGE 3 WEAST, 5TH PRINCIPAL
MERIDIAN, JONES COUNTY, IOWA.



J.D. TJEPKES LS 14807
JONES COUNTY
ENGINEER'S OFFICE

19501 HWY. 64,
ANAMOSA, IOWA,
52205 (319)462-3785