

00 MAR -2 AM 10: 58

Lowell

TeKIPPE ENGINEERING, P.C., 128 South Vine Street, West Union, Iowa 52175 Phone (319) 422-5131

MARIE KRUTZFIELD
 RECORDER

600 Pd

UNITED STATES PUBLIC LAND SURVEY CORNER CERTIFICATE

OF

Land Survey Monuments situated in Section 4, Township 86 North, Range 3 West, of the Fifth Principal Meridian, JONES County, Iowa.

Previously recorded in none in County Recorder's Office.
 (book, page, document number, etc.)

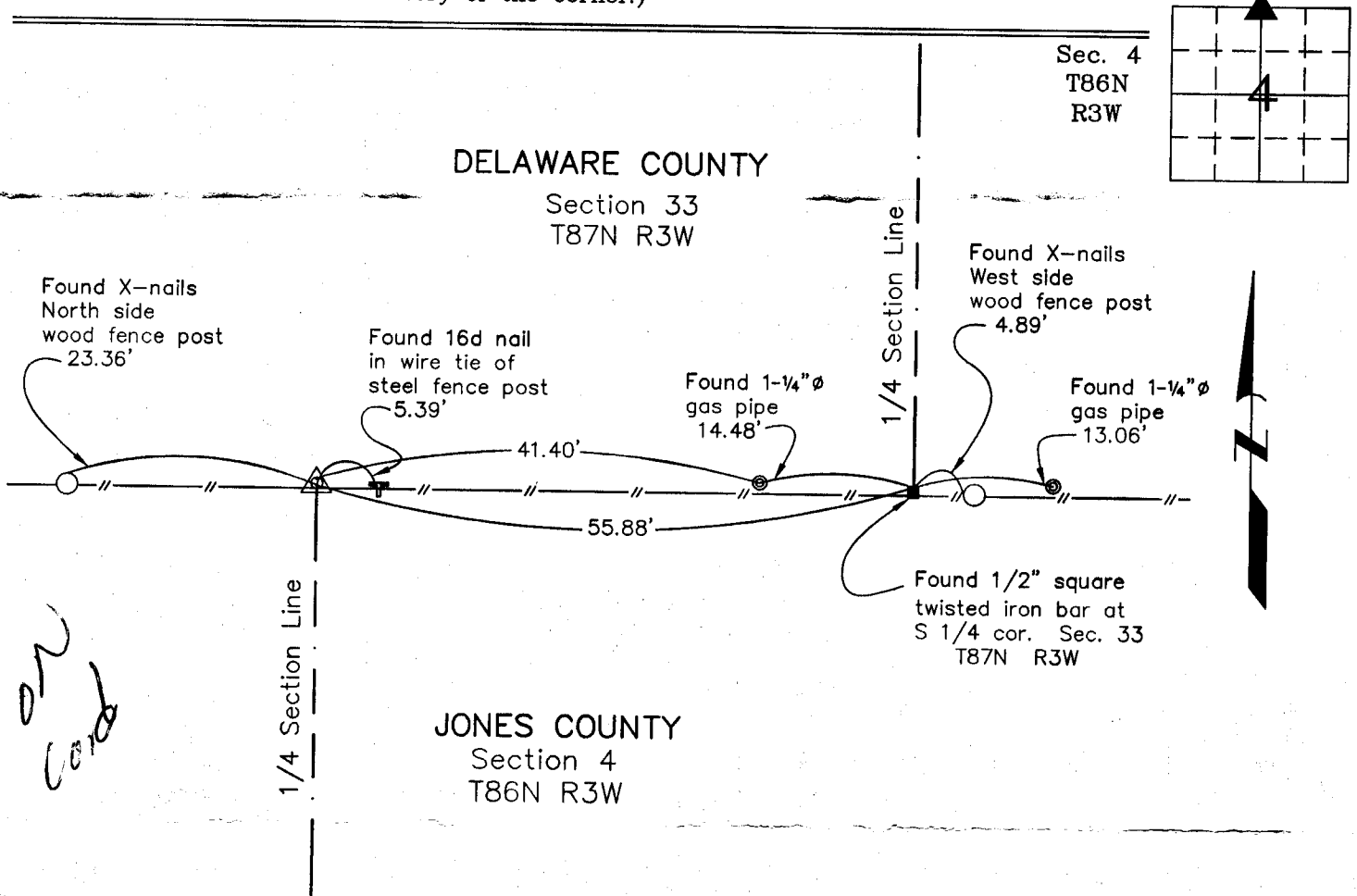
(Show reason for preparing this certificate, the evidence and detailed procedures used in establishing the corner positions and monumentation found or placed.)

Monument Description and Remarks: N 1/4 Corner Section 4 T86N R3W: Found conc. monument with information obtained from a Corner Stone Survey made by William H. Robinson for Iowa's Department of Transportation Project No. FN-38-4--21-28. The corner was found in conjunction with a survey made in Delaware County.

PLAN - VIEW

Project Number 00032.LS
 FB. 16C PG. 45-48

(Show a minimum of three reference ties to durable physical objects, relevant monuments and physical conditions that will enable recovery of the corner.)

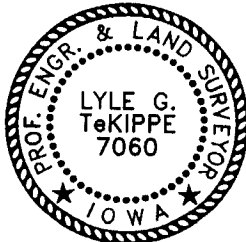


on card

N 1/4 Corner Section 4 T86N R3W
 Found concrete monument

I hereby certify that this land surveying document was prepared and the related survey work was performed by me or under my direct personal supervision and that I am a duly licensed Land Surveyor under the laws of the State of Iowa.

Lyle G. Tekippe 3-1-00
 Lyle G. Tekippe Date
 License number 7060
 My license renewal date is December 31, 2000.
 Sheets covered by this seal: Individual



List Corners to be Indexed			
Corners	Section	Twp.	Range
N 1/4	4	86N	3W

86304c-030100

County Engineer's Copy