

COPY

Jones County Iowa  
 Marie Krutzfield, Recorder  
 Fee Book 2010 1570

06/16/2010 @1055AM  
 ZSC SEC COR CERT  
 Book: Page: # Pages: 1  
 Total Fees: \$0.00

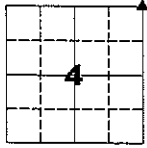
PREPARED BY

CLARENCE J. WALTON, JONES COUNTY ENGINEER'S OFFICE, 19501 HWY. 64, ANAMOSA, IOWA, 52205 (319) 462-3785

UNITED STATES PUBLIC LAND  
 SURVEY CORNER CERTIFICATE

LAND SURVEY MONUMENTS SITUATED IN SECTION 4, TOWNSHIP 86 NORTH,  
 RANGE 3 WEST OF THE 5TH PRINCIPAL MERIDIAN, JONES COUNTY, IOWA.

CORNER SECTION TOWNSHIP RANGE  
 NE 4 86N 3W



NO SCALE

OFFICE FILE NO.

STATE PLANE COORDINATE  
 NAD 83 IOWA NORTH  
 N  
 E

NOTE:  
 THE STATE PLANE COORDINATE AS INDICATED IS FOR CONVENIENCE ONLY.  
 THE TIES AS SHOWN SHOULD BE USED TO REPLACE THE CORNER, IF  
 DESTROYED

CORNER SECTION TOWNSHIP RANGE

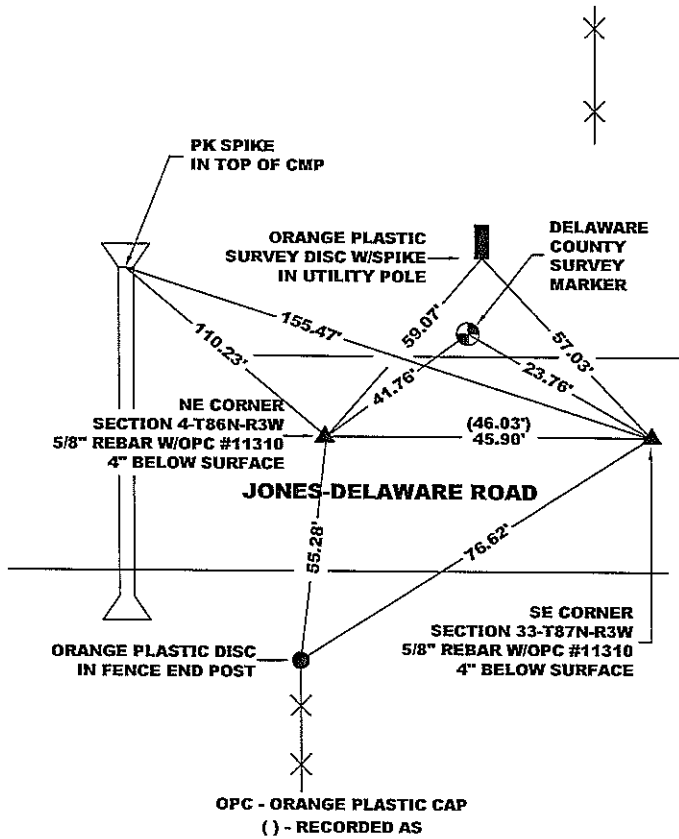


NO SCALE

OFFICE FILE NO.

STATE PLANE COORDINATE  
 NAD 83 IOWA NORTH  
 N  
 E

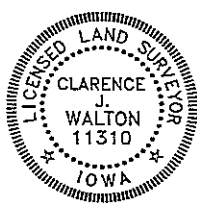
NOTE:  
 THE STATE PLANE COORDINATE AS INDICATED IS FOR CONVENIENCE ONLY.  
 THE TIES AS SHOWN SHOULD BE USED TO REPLACE THE CORNER, IF  
 DESTROYED



PREVIOUSLY RECORDED IN BOOK 2000, PAGE 0740

MONUMENT DESCRIPTION AND HOW ESTABLISHED REPLACED  
 CORNER AFTER ROAD CONSTRUCTION W/ 5/8" REBAR W/OPC "JONES COUNTY  
 11310" AT POSITION AS FOUND DURING PRELIMINARY SURVEY FOR ROAD  
 GRADING PROJECT.

PREVIOUSLY RECORDED IN BOOK \_\_\_\_\_, PAGE \_\_\_\_\_  
 MONUMENT DESCRIPTION AND HOW ESTABLISHED \_\_\_\_\_



I hereby certify that this land surveying document  
 and the related survey work was performed by me  
 or under my direct personal supervision and that  
 I am a duly registered Land Surveyor under the laws  
 of the State of Iowa.  
 Signed: *Clarence J. Walton* 6/16/10  
 Clarence J. Walton, L.S.  
 My Registration Renewal Date is December 31, 2011  
 Iowa License Number 11310  
 Pages or sheets covered by this seal: 1 of 1.

- A. THERE IS NO CERTIFICATE FOR THE CORNER ON FILE WITH THE RECORDER OF THE COUNTY IN WHICH THE CORNER IS LOCATED.
- B. THE CORNER MONUMENT HAS BEEN REPLACED OR MODIFIED.
- C. THE SURVEYOR IN RESPONSIBLE CHARGE OF THE LAND SURVEYING ACCEPTS A CORNER POSITION THAT DIFFERS FROM THAT SHOWN IN THE PUBLIC RECORDS OF THE COUNTY IN WHICH THE CORNER IS LOCATED.
- D. THE REFERENCE TIES REFERRED TO IN AN EXISTING PUBLIC RECORD NO LONGER EXIST.

CORNERS TO BE INDEXED

CORNER	SECTION	TOWNSHIP	RANGE
NE CORNER	4	86N	3W
NW CORNER	3	86N	3W

JONES COUNTY ENGINEER'S OFFICE



19501 HWY. 64, ANAMOSA, IOWA 52205  
 (319) 462-3785



Book 2007 Page 3931

Document 2007 3931 Type 06 007 Pages 1  
Date 12/07/2007 Time 12:37:00PM  
Rec Amt \$7.00

DEBORAH L PEYTON, RECORDER/REGISTRAR  
DELAWARE COUNTY IOWA

PREPARED BY  
CLARENCE J. WALTON, JONES COUNTY ENGINEER'S OFFICE, 19501 HWY. 64, ANAMOSA, IOWA, 52205 (319) 462-3785

# UNITED STATES PUBLIC LAND SURVEY CORNER CERTIFICATE

LAND SURVEY MONUMENTS SITUATED IN SECTION 33, TOWNSHIP 87 NORTH,  
RANGE 3 WEST OF THE 5TH PRINCIPAL MERIDIAN, DELAWARE COUNTY, IOWA.

CORNER SECTION TOWNSHIP RANGE  
SE 33 87N 3W

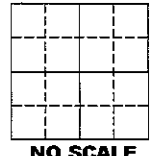


OFFICE FILE NO.

STATE PLANE COORDINATE  
NAD 83 IOWA NORTH  
N  
E

NOTE:  
THE STATE PLANE COORDINATE AS INDICATED IS FOR CONVENIENCE ONLY.  
THE TIES AS SHOWN SHOULD BE USED TO REPLACE THE CORNER, IF  
DESTROYED

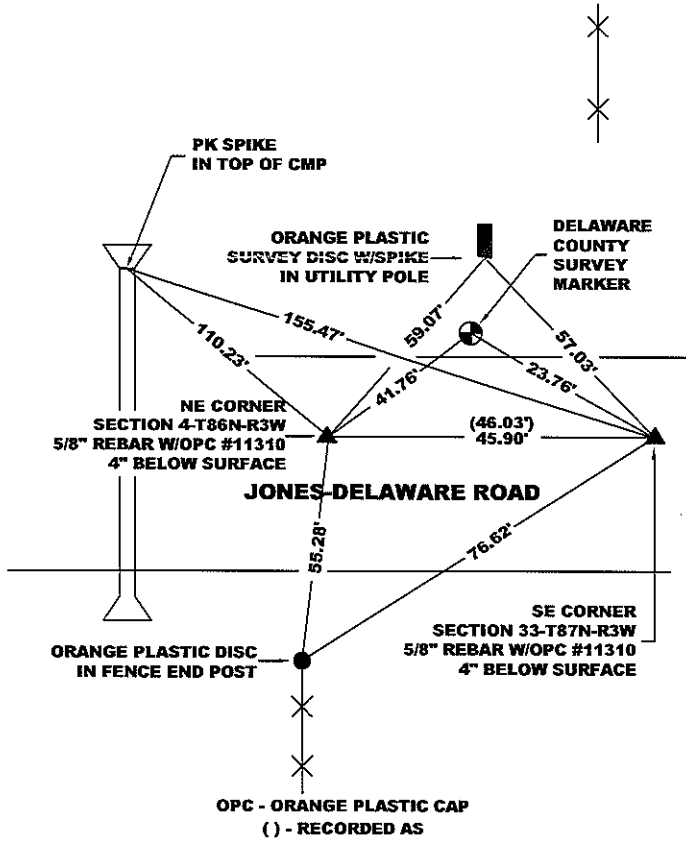
CORNER SECTION TOWNSHIP RANGE



OFFICE FILE NO.

STATE PLANE COORDINATE  
NAD 83 IOWA NORTH  
N  
E

NOTE:  
THE STATE PLANE COORDINATE AS INDICATED IS FOR CONVENIENCE ONLY.  
THE TIES AS SHOWN SHOULD BE USED TO REPLACE THE CORNER, IF  
DESTROYED



PREVIOUSLY RECORDED IN BOOK N/A, PAGE N/A  
MONUMENT DESCRIPTION AND HOW ESTABLISHED REPLACED  
CORNER AFTER ROAD CONSTRUCTION W/ 5/8" REBAR W/OPC "JONES COUNTY  
11310" AT POSITION AS FOUND DURING PRELIMINARY SURVEY FOR ROAD  
GRADING PROJECT.

PREVIOUSLY RECORDED IN BOOK     , PAGE       
MONUMENT DESCRIPTION AND HOW ESTABLISHED     



I hereby certify that this land surveying document  
and the related survey work was performed by me  
or under my direct personal supervision and that  
I am a duly registered Land Surveyor under the laws  
of the State of Iowa.  
Signed: *Clarence J. Walton* 12/4/07  
Clarence J. Walton, L.S.  
My Registration Renewal Date is December 31, 2007  
Iowa License Number 11310  
Pages or sheets covered by this seal: 1 of 1.

- A. THERE IS NO CERTIFICATE FOR THE CORNER ON FILE WITH THE RECORDER OF THE COUNTY IN WHICH THE CORNER IS LOCATED.
- B. THE CORNER MONUMENT HAS BEEN REPLACED OR MODIFIED.
- C. THE SURVEYOR IN RESPONSIBLE CHARGE OF THE LAND SURVEYING ACCEPTS A CORNER POSITION THAT DIFFERS FROM THAT SHOWN IN THE PUBLIC RECORDS OF THE COUNTY IN WHICH THE CORNER IS LOCATED.
- D. THE REFERENCE TIES REFERRED TO IN AN EXISTING PUBLIC RECORD NO LONGER EXIST.

CORNER	SECTION	TOWNSHIP	RANGE
SE CORNER	33	87N	3W
SW CORNER	34	87N	3W

## JONES COUNTY ENGINEER'S OFFICE



19501 HWY. 64, ANAMOSA, IOWA 52205  
(319) 462-3785

lovell

00 MAR -2 AM 11:00

MARIE KRUTZFIELD 600 Pd

TeKIPPE ENGINEERING, P.C., 128 South Vine Street, Union, Iowa 52175 Phone (319) 422-5131

UNITED STATES PUBLIC LAND SURVEY CORNER CERTIFICATE

OF

Land Survey Monuments situated in Section 4, Township 86 North, Range 3 West, of the Fifth Principal Meridian, JONES County, Iowa.

Previously recorded in none in County Recorder's Office.  
(book, page, document number, etc.)

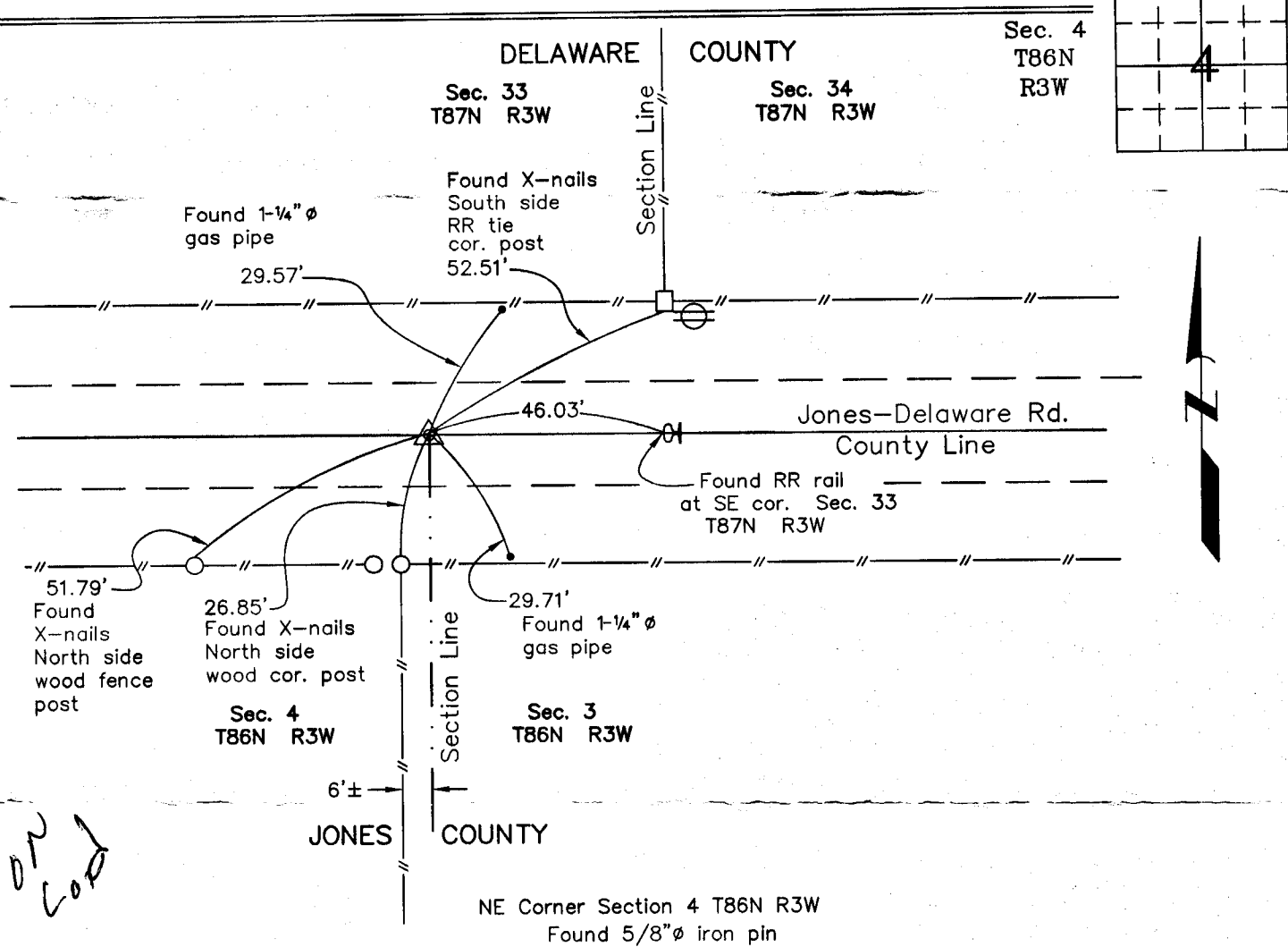
(Show reason for preparing this certificate, the evidence and detailed procedures used in establishing the corner positions and monumentation found or placed.)

Monument Description and Remarks: NE Corner Section 4 T86N R3W: Found 5/8" ø iron pin with information obtained from a Corner Stone Survey made by William H. Robinson for Iowa's Department of Transportation Project No. FN-38-4--21-28. The corner was found in conjunction with a survey made in Delaware County.

PLAN - VIEW

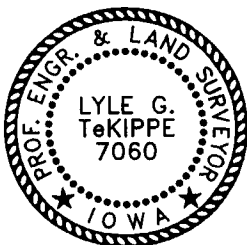
Project Number 00032.LS  
FB. 16C PG. 45-48

(Show a minimum of three reference ties to durable physical objects, relevant monuments and physical conditions that will enable recovery of the corner.)



NE Corner Section 4 T86N R3W  
Found 5/8" ø iron pin

I hereby certify that this land surveying document was prepared and the related survey work was performed by me or under my direct personal supervision and that I am a duly licensed Land Surveyor under the laws of the State of Iowa.



*Lyle G. TeKippe* 3-1-00  
Lyle G. TeKippe Date  
License number 7060  
My license renewal date is December 31, 2000.  
Sheets covered by this seal: Individual

List Corners to be Indexed			
Corners	Section	Twp.	Range
NE	4	86N	3W

86304e-030100

County Engineer's Copy