

2002 0741  
 FILED  
 RECORDERS OFFICE  
 JONES COUNTY IOWA

02 FEB 27 AM 8:52

MARIE KRUTZFIELD NO FEE

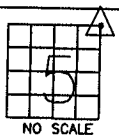
J.D. Tjepkes, LS. JONES COUNTY ENGINEER'S OFFICE, 19501 HWY. 64, ANAMOSA, IOWA, 52205 (319)462-3785

# UNITED STATES PUBLIC LAND SURVEY CORNER CERTIFICATE

LAND SURVEY MONUMENTS SITUATED IN SECTION 5, TOWNSHIP 86 NORTH, RANGE 3 WEST OF THE 5TH P.M., JONES COUNTY, IOWA

### CORNERS TO BE INDEXED

CORNER SECTION TOWNSHIP RANGE  
 NORTHEAST 5 86N 3W

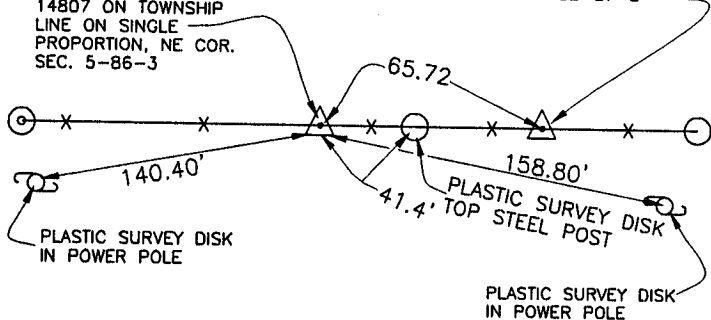


NO SCALE

OFFICE FILE NO.  
 86305e-020802 022102

SET 5/8"x48" REBAR WITH ORANGE CAP LS 14807 ON TOWNSHIP LINE ON SINGLE PROPORTION, NE COR. SEC. 5-86-3

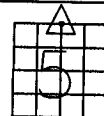
SET 5/8"x48" REBAR W/ORANGE CAP LS 14807 SE COR. SEC. 32-87-3



PREVIOUSLY RECORDED IN BOOK N/A, PAGE N/A  
 MONUMENT DESCRIPTION AND HOW ESTABLISHED SET 5/8"x48" REBAR WITH ORANGE CAP LS 14807 ON TOWNSHIP LINE PER SINGLE PROPORTION METHOD. SET REFERENCE POINTS AND TIED OUT AS INDICATED. NORTHEAST CORNER SEC. 5, TOWNSHIP 86 NORTH, RANGE 3 WEST, 5TH P.M., JONES COUNTY, IOWA.

### CORNERS TO BE INDEXED

CORNER SECTION TOWNSHIP RANGE  
 N-1/4 5 86N 3W

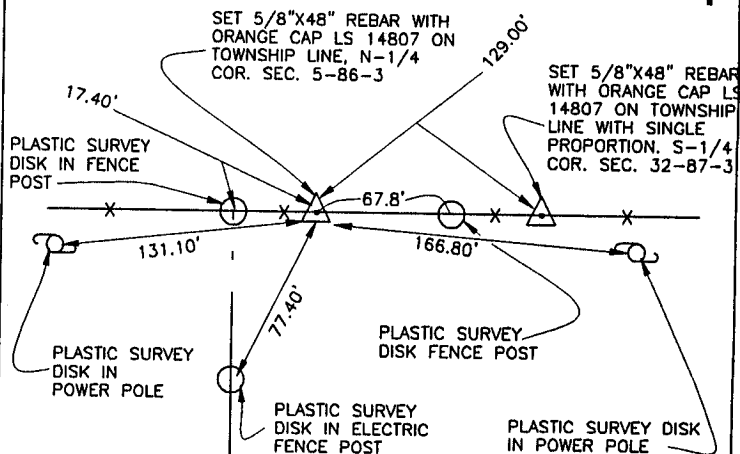


NO SCALE

OFFICE FILE NO.  
 86305c-020802 022102

SET 5/8"x48" REBAR WITH ORANGE CAP LS 14807 ON TOWNSHIP LINE, N-1/4 COR. SEC. 5-86-3

SET 5/8"x48" REBAR WITH ORANGE CAP LS 14807 ON TOWNSHIP LINE WITH SINGLE PROPORTION, S-1/4 COR. SEC. 32-87-3



PREVIOUSLY RECORDED IN BOOK N/A, PAGE N/A  
 MONUMENT DESCRIPTION AND HOW ESTABLISHED SET 5/8"x48" REBAR WITH ORANGE CAP LS 14807 ON TOWNSHIP LINE PER SINGLE PROPORTION EAST-WEST. SET REFERENCE POINTS AND TIED OUT AS INDICATED. NORTH QUARTER CORNER SECTION 5, TOWNSHIP 86 NORTH, RANGE 3 WEST, 5TH P.M., JONES COUNTY, IOWA.

### CORNERS TO BE INDEXED

CORNER SECTION TOWNSHIP RANGE  
 E1/4 5 86N 3W

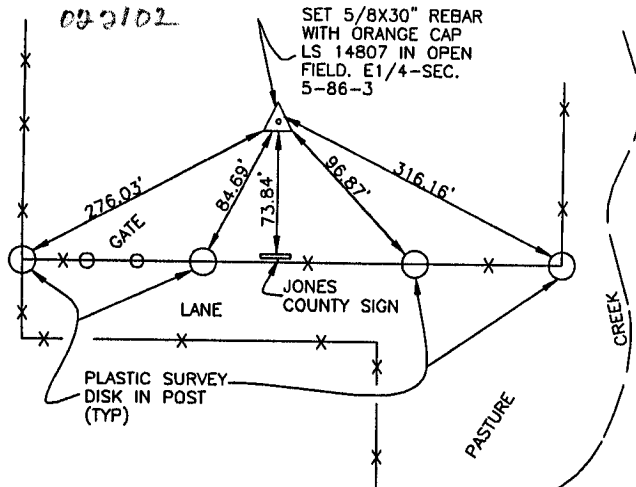


NO SCALE

OFFICE FILE NO.  
 86305c-021102

022102

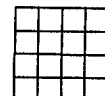
SET 5/8x30" REBAR WITH ORANGE CAP LS 14807 IN OPEN FIELD, E1/4-SEC. 5-86-3



PREVIOUSLY RECORDED IN BOOK N/A, PAGE N/A  
 MONUMENT DESCRIPTION AND HOW ESTABLISHED SET 5/8"x30" REBAR WITH ORANGE CAP LS 14807 24" BELOW SURFACE IN OPEN FIELD ON SPLIT BETWEEN SECTION CORNERS. SET REFERENCE POINTS AND TIED OUT AS INDICATED, EAST 1/4 COR. SEC. 5, TOWNSHIP 86 NORTH, RANGE 3 WEST, JONES COUNTY, IOWA.

### CORNERS TO BE INDEXED

CORNER SECTION TOWNSHIP RANGE



NO SCALE

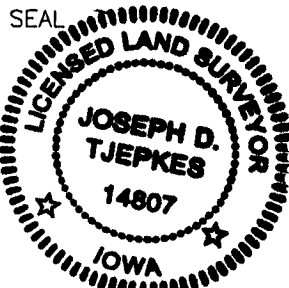
OFFICE FILE NO.

PREVIOUSLY RECORDED IN BOOK \_\_\_\_\_, PAGE \_\_\_\_\_  
 MONUMENT DESCRIPTION AND HOW ESTABLISHED \_\_\_\_\_

I hereby declare that this plat, survey or report was made by me or under my direct personal supervision and that I am a duly registered Land Surveyor under the laws of the State of Iowa.

Signed: *Joseph D. Tjepkes* 2-21-02

Joseph D. Tjepkes L.S. Iowa Reg. No. 14807  
 My Registration Renewal Date is December 31, 2002



J.D. Tjepkes LS 14807  
 JONES COUNTY  
 ENGINEER'S OFFICE

19501 HWY. 64,  
 ANAMOSA, IOWA,  
 52205 (319)462-3785

All to Engineer

BOOK N/A PAGE 1894  
DEBORAH L. PEYTON  
DELAWARE CO. RECORDER  
N/C

2002 AP - 5 PM 1:14

DELAWARE COUNTY IOWA  
FILED

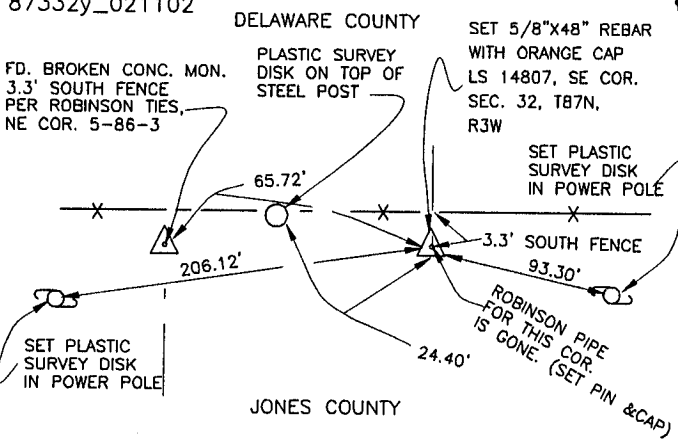
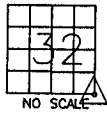
J.D. Tjepkes, LS. JONES COUNTY ENGINEER'S OFFICE, 19501 HWY. 64, ANAMOSA, IOWA, 52205 (319)462-3785

# UNITED STATES PUBLIC LAND SURVEY CORNER CERTIFICATE

LAND SURVEY MONUMENTS SITUATED IN SECTION 32, TOWNSHIP 87  
NORTH, RANGE 3 WEST OF THE 5TH P.M., DELAWARE COUNTY, IOWA

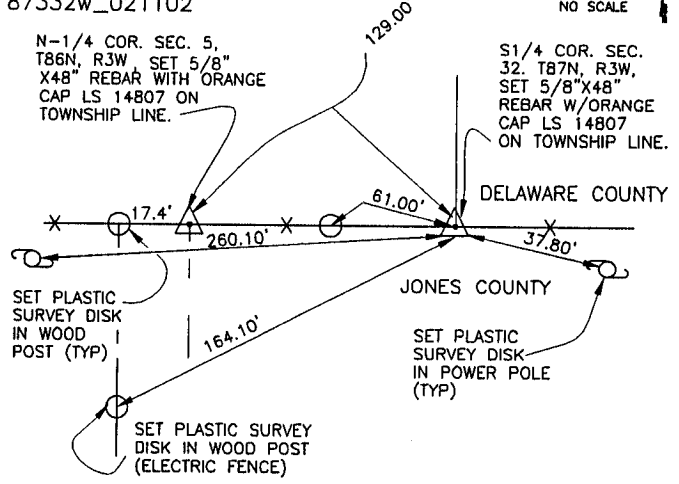
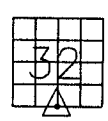
### CORNERS TO BE INDEXED

CORNER SECTION TOWNSHIP RANGE  
SOUTHEAST 32 87N 3W  
OFFICE FILE NO. 87332y\_021102



### CORNERS TO BE INDEXED

CORNER SECTION TOWNSHIP RANGE  
SOUTH 1/4 32 87N 3W  
OFFICE FILE NO. 87332w\_021102



PREVIOUSLY RECORDED IN BOOK N/A, PAGE N/A  
MONUMENT DESCRIPTION AND HOW ESTABLISHED SET 5/8\"X  
48\" REBAR WITH ORANGE CAP LS 14807 ON TOWNSHIP LINE PER  
SINGLE PROPORTION METHOD. SET REFERENCE POINTS AND TIED  
OUT AS INDICATED. SOUTHEAST CORNER SECTION 32, TOWNSHIP  
87 NORTH, RANGE 3 WEST, 5TH PM, DELAWARE COUNTY, IOWA.

PREVIOUSLY RECORDED IN BOOK N/A, PAGE N/A  
MONUMENT DESCRIPTION AND HOW ESTABLISHED SET 5/8\"X48\"  
REBAR WITH ORANGE CAP LS 14807 ON TOWNSHIP LINE PER  
SINGLE PROPORTION METHOD. SET REFERENCE POINTS AND TIED  
OUT AS INDICATED. SOUTH QUARTER CORNER SECTION 32,  
TOWNSHIP 87 NORTH, RANGE 3 WEST, 5TH PM, DELAWARE COUNTY,  
IOWA.

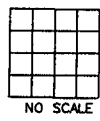
### CORNERS TO BE INDEXED

CORNER SECTION TOWNSHIP RANGE  
OFFICE FILE NO. \_\_\_\_\_



### CORNERS TO BE INDEXED

CORNER SECTION TOWNSHIP RANGE  
OFFICE FILE NO. \_\_\_\_\_

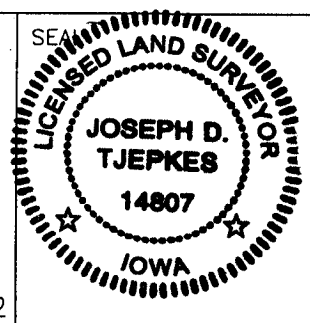


PREVIOUSLY RECORDED IN BOOK \_\_\_\_\_, PAGE \_\_\_\_\_  
MONUMENT DESCRIPTION AND HOW ESTABLISHED \_\_\_\_\_

PREVIOUSLY RECORDED IN BOOK \_\_\_\_\_, PAGE \_\_\_\_\_  
MONUMENT DESCRIPTION AND HOW ESTABLISHED \_\_\_\_\_

I hereby declare that this plat, survey or report was made by me or under my direct personal supervision and that I am a duly registered Land Surveyor under the laws of the State of Iowa.

Signed: 3.26.02



J.D. Tjepkes LS 14807  
JONES COUNTY  
ENGINEER'S OFFICE

19501 HWY. 64,  
ANAMOSA, IOWA,  
52205 (319)462-3785

Joseph D. Tjepkes L.S. Iowa Reg. No. 14807  
My Registration Renewal Date is December 31, 2002