

20021241

FILED  
RECORDERS OFFICE  
JONES COUNTY IOWA

02 MAR 27 AM 11:53

MARIE KRUTZFIELD NO FEE  
RECORDER

# (CORRECTION CERTIFICATE)

J.D. Tjepkes, L.S. JONES COUNTY ENGINEER'S OFFICE, 19501 HWY. 64, ANAMOSA, IOWA, 52205 (319)462-3785

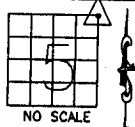
## UNITED STATES PUBLIC LAND SURVEY CORNER CERTIFICATE

LAND SURVEY MONUMENTS SITUATED IN SECTION 5, TOWNSHIP 86  
NORTH, RANGE 3 WEST OF THE 5TH P.M., JONES COUNTY, IOWA

### CORNERS TO BE INDEXED

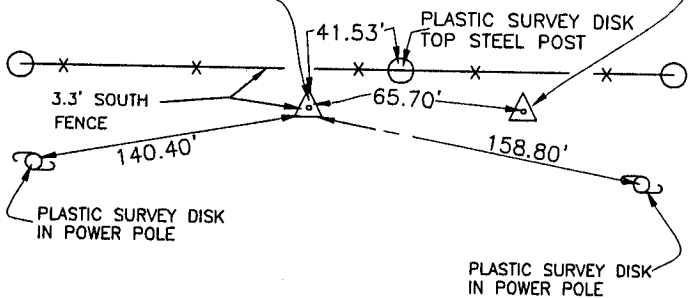
CORNER SECTION TOWNSHIP RANGE  
NORTHEAST 5 86N 3W

OFFICE FILE NO.  
86305e\_032602



SET 5/8"X48"  
REBAR W/ORANGE  
CAP LS 14807  
SE COR. SEC.  
32-87-3

FD. BROKEN CONC.  
MONUMENT PER ROBINSON  
TIES. NE COR. SEC. 5,  
T86N, R3W



### CORRECTION CERTIFICATE:

THIS CERTIFICATE WAS ORIGINALLY  
FILED IN BOOK 2002 AT PAGE  
0741 INDICATING SET PIN & CAP  
LS 14807. PLEASE NOTE FOUND  
CONCRETE MONUMENT.

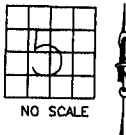
REVISED FIELD NOTES  
JONES COUNTY PROJECT NO.  
C-775, BOOK NO. 337, PAGE  
37, DATED 3-18-02

PREVIOUSLY RECORDED IN BOOK 2002, PAGE 0741  
MONUMENT DESCRIPTION AND HOW ESTABLISHED FD. BROKEN  
CONCRETE MONUMENT PER ROBINSON TIES. RESET IN UPRIGHT POSITION WITH  
TOP OF REBAR FLUSH WITH GROUND. SET ROUND GRANITE STONE ON EAST  
SIDE OF MONUMENT. SET NEW REFERENCE POINTS AND TIED OUT AS INDICATED.  
NORTHEAST CORNER SECTION 5, TOWNSHIP 86 NORTH, RANGE 3 WEST, 5TH PM,  
JONES COUNTY, IOWA.

### CORNERS TO BE INDEXED

CORNER SECTION TOWNSHIP RANGE

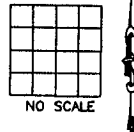
OFFICE FILE NO.



### CORNERS TO BE INDEXED

CORNER SECTION TOWNSHIP RANGE

OFFICE FILE NO.



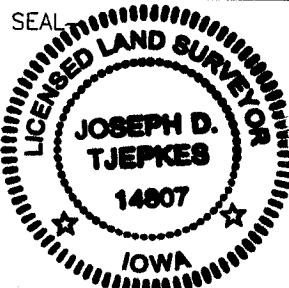
PREVIOUSLY RECORDED IN BOOK \_\_\_\_\_, PAGE \_\_\_\_\_  
MONUMENT DESCRIPTION AND HOW ESTABLISHED \_\_\_\_\_

PREVIOUSLY RECORDED IN BOOK \_\_\_\_\_, PAGE \_\_\_\_\_  
MONUMENT DESCRIPTION AND HOW ESTABLISHED \_\_\_\_\_

I hereby declare that this plat, survey or report  
was made by me or under my direct personal  
supervision and that I am a duly registered Land  
Surveyor under the laws of the State of Iowa.

Signed: *[Signature]* 3-26-02

Joseph D. Tjepkes L.S. Iowa Reg. No. 14807  
My Registration Renewal Date is December 31, 2002



J.D. Tjepkes LS 14807  
JONES COUNTY  
ENGINEER'S OFFICE

19501 HWY. 64,  
ANAMOSA, IOWA,  
52205 (319)462-3785

Bill Co Engineer

BOOK N/A PAGE 1894  
DEBORAH L. PEYTON  
DELAWARE CO. RECORDER  
N/C

2002 AP - 5 PM 1:14

DELAWARE COUNTY IOWA  
FILED

J.D. Tjepkes, LS. JONES COUNTY ENGINEER'S OFFICE, 19501 HWY. 64, ANAMOSA, IOWA, 52205 (319)462-3785

# UNITED STATES PUBLIC LAND SURVEY CORNER CERTIFICATE

LAND SURVEY MONUMENTS SITUATED IN SECTION 32, TOWNSHIP 87  
NORTH, RANGE 3 WEST OF THE 5TH P.M., DELAWARE COUNTY, IOWA

**CORNERS TO BE INDEXED**

CORNER	SECTION	TOWNSHIP	RANGE
SOUTHEAST	32	87N	3W

OFFICE FILE NO. 87332y\_021102

DELAWARE COUNTY

JONES COUNTY

PREVIOUSLY RECORDED IN BOOK N/A, PAGE N/A  
MONUMENT DESCRIPTION AND HOW ESTABLISHED SET 5/8\"X  
48\" REBAR WITH ORANGE CAP LS 14807 ON TOWNSHIP LINE PER  
SINGLE PROPORTION METHOD. SET REFERENCE POINTS AND TIED  
OUT AS INDICATED. SOUTHEAST CORNER SECTION 32, TOWNSHIP  
87 NORTH, RANGE 3 WEST, 5TH PM, DELAWARE COUNTY, IOWA.

**CORNERS TO BE INDEXED**

CORNER	SECTION	TOWNSHIP	RANGE
SOUTH 1/4	32	87N	3W

OFFICE FILE NO. 87332w\_021102

DELAWARE COUNTY

JONES COUNTY

PREVIOUSLY RECORDED IN BOOK N/A, PAGE N/A  
MONUMENT DESCRIPTION AND HOW ESTABLISHED SET 5/8\"X  
48\" REBAR WITH ORANGE CAP LS 14807 ON TOWNSHIP LINE PER  
SINGLE PROPORTION METHOD. SET REFERENCE POINTS AND TIED  
OUT AS INDICATED. SOUTH QUARTER CORNER SECTION 32,  
TOWNSHIP 87 NORTH, RANGE 3 WEST, 5TH PM, DELAWARE COUNTY,  
IOWA.

**CORNERS TO BE INDEXED**

CORNER	SECTION	TOWNSHIP	RANGE
	32		

OFFICE FILE NO. \_\_\_\_\_

PREVIOUSLY RECORDED IN BOOK \_\_\_\_\_, PAGE \_\_\_\_\_  
MONUMENT DESCRIPTION AND HOW ESTABLISHED \_\_\_\_\_

**CORNERS TO BE INDEXED**

CORNER	SECTION	TOWNSHIP	RANGE
	32		

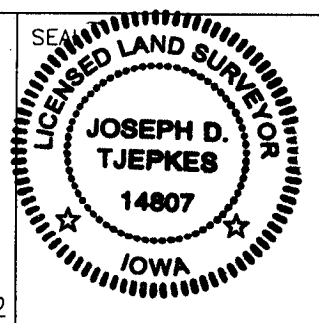
OFFICE FILE NO. \_\_\_\_\_

PREVIOUSLY RECORDED IN BOOK \_\_\_\_\_, PAGE \_\_\_\_\_  
MONUMENT DESCRIPTION AND HOW ESTABLISHED \_\_\_\_\_

I hereby declare that this plat, survey or report was made by me or under my direct personal supervision and that I am a duly registered Land Surveyor under the laws of the State of Iowa.

Signed: 3.26.02

Joseph D. Tjepkes L.S. Iowa Reg. No. 14807  
My Registration Renewal Date is December 31, 2002



J.D. Tjepkes LS 14807  
JONES COUNTY  
ENGINEER'S OFFICE

19501 HWY. 64,  
ANAMOSA, IOWA,  
52205 (319)462-3785

2002 0741  
 FILED  
 RECORDERS OFFICE  
 JONES COUNTY IOWA

02 FEB 27 AM 8:52

MARIE KRUTZFIELD **NO FEE**

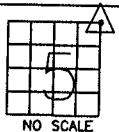
J.D. TJEPKES, LS. JONES COUNTY ENGINEER'S OFFICE, 19501 HWY. 64, ANAMOSA, IOWA, 52205 (319)462-3785

# UNITED STATES PUBLIC LAND SURVEY CORNER CERTIFICATE

LAND SURVEY MONUMENTS SITUATED IN SECTION 5, TOWNSHIP 86  
 NORTH, RANGE 3 WEST OF THE 5TH P.M., JONES COUNTY, IOWA

### CORNERS TO BE INDEXED

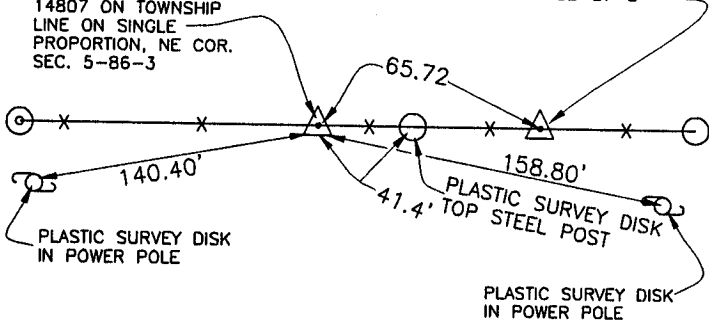
CORNER SECTION TOWNSHIP RANGE  
 NORTHEAST 5 86N 3W



OFFICE FILE NO.  
 86305e-020802 022102

SET 5/8"X48" REBAR W/ORANGE CAP LS 14807 SE COR. SEC. 32-87-3

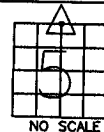
SET 5/8"X48" REBAR WITH ORANGE CAP LS 14807 ON TOWNSHIP LINE ON SINGLE PROPORTION, NE COR. SEC. 5-86-3



PREVIOUSLY RECORDED IN BOOK N/A, PAGE N/A  
 MONUMENT DESCRIPTION AND HOW ESTABLISHED SET 5/8"X48" REBAR WITH ORANGE CAP LS 14807 ON TOWNSHIP LINE PER SINGLE PROPORTION METHOD. SET REFERENCE POINTS AND TIED OUT AS INDICATED. NORTHEAST CORNER SEC. 5, TOWNSHIP 86 NORTH, RANGE 3 WEST, 5TH P.M., JONES COUNTY, IOWA.

### CORNERS TO BE INDEXED

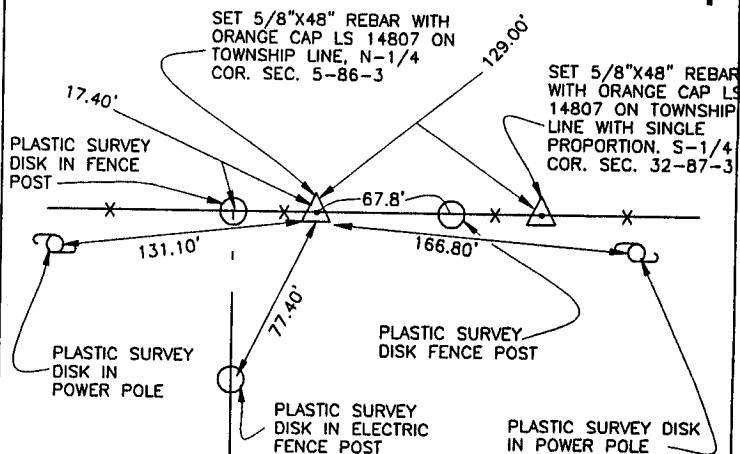
CORNER SECTION TOWNSHIP RANGE  
 N-1/4 5 86N 3W



OFFICE FILE NO.  
 86305c-020802 022102

SET 5/8"X48" REBAR WITH ORANGE CAP LS 14807 ON TOWNSHIP LINE, N-1/4 COR. SEC. 5-86-3

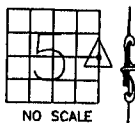
SET 5/8"X48" REBAR WITH ORANGE CAP LS 14807 ON TOWNSHIP LINE WITH SINGLE PROPORTION, S-1/4 COR. SEC. 32-87-3



PREVIOUSLY RECORDED IN BOOK N/A, PAGE N/A  
 MONUMENT DESCRIPTION AND HOW ESTABLISHED SET 5/8"X48" REBAR WITH ORANGE CAP LS 14807 ON TOWNSHIP LINE PER SINGLE PROPORTION EAST-WEST. SET REFERENCE POINTS AND TIED OUT AS INDICATED. NORTH QUARTER CORNER SECTION 5, TOWNSHIP 86 NORTH, RANGE 3 WEST, 5TH P.M., JONES COUNTY, IOWA.

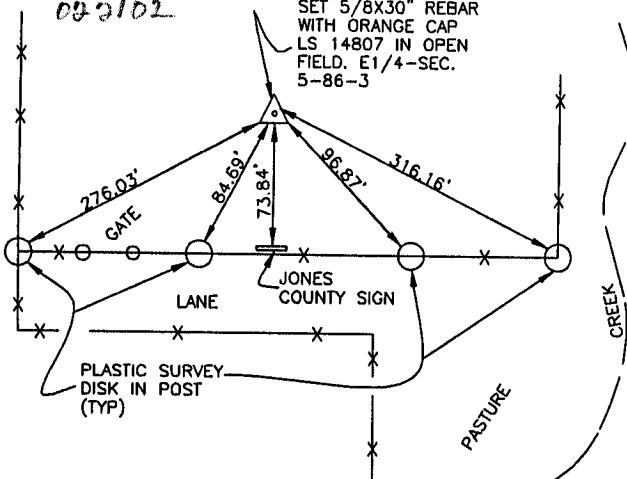
### CORNERS TO BE INDEXED

CORNER SECTION TOWNSHIP RANGE  
 E1/4 5 86N 3W



OFFICE FILE NO.  
 86305c-021102

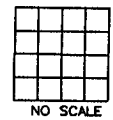
SET 5/8X30" REBAR WITH ORANGE CAP LS 14807 IN OPEN FIELD, E1/4-SEC. 5-86-3



PREVIOUSLY RECORDED IN BOOK N/A, PAGE N/A  
 MONUMENT DESCRIPTION AND HOW ESTABLISHED SET 5/8"X30" REBAR WITH ORANGE CAP LS 14807 24" BELOW SURFACE IN OPEN FIELD ON SPLIT BETWEEN SECTION CORNERS. SET REFERENCE POINTS AND TIED OUT AS INDICATED, EAST 1/4 COR. SEC. 5, TOWNSHIP 86 NORTH, RANGE 3 WEST, JONES COUNTY, IOWA.

### CORNERS TO BE INDEXED

CORNER SECTION TOWNSHIP RANGE



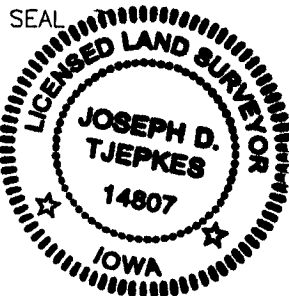
OFFICE FILE NO.

PREVIOUSLY RECORDED IN BOOK \_\_\_\_\_, PAGE \_\_\_\_\_  
 MONUMENT DESCRIPTION AND HOW ESTABLISHED \_\_\_\_\_

I hereby declare that this plat, survey or report was made by me or under my direct personal supervision and that I am a duly registered Land Surveyor under the laws of the State of Iowa.

Signed: *Joseph D. Tjepkes* 2-21-02

Joseph D. Tjepkes L.S. Iowa Reg. No. 14807  
 My Registration Renewal Date is December 31, 2002



J.D. TJEPKES LS 14807  
 JONES COUNTY  
 ENGINEER'S OFFICE

19501 HWY. 64,  
 ANAMOSA, IOWA,  
 52205 (319)462-3785