

Marie Krutzfield, Recorder  
 Jones County, Iowa

Prepared by Wm. Burger LandSurveyors 510 3rd Street West Court, Worthington, Iowa Phone 563 - 855 2028

**UNITED STATES PUBLIC LAND SURVEY CORNER CERTIFICATE**

Land Survey Monuments situated in Section 7, Township 86N, Range 3W, of the Fifth Principal Meridian, Jones County, Iowa. Previously recorded in N/A in the Office of the County Recorder

Monument Description and Remarks: (No Corner Certificates found at the County Recorders Office)

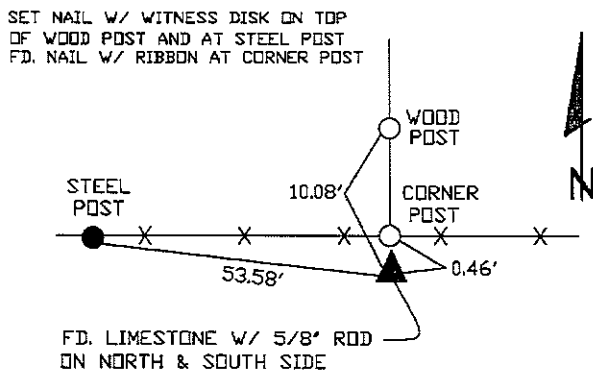
NE CORNER - FOUND LIMESTONE WITH 5/8" IRON ROD ON NORTH & SOUTH SIDE OF LIMESTONE

SE CORNER NE1/4 NE1/4 - SET 1/2" IRON ROD W/YELLOW LS CAP #12642 - SET ON LINE AND MIDWAY BETWEEN THE E1/4 CORNER AND THE NE CORNER

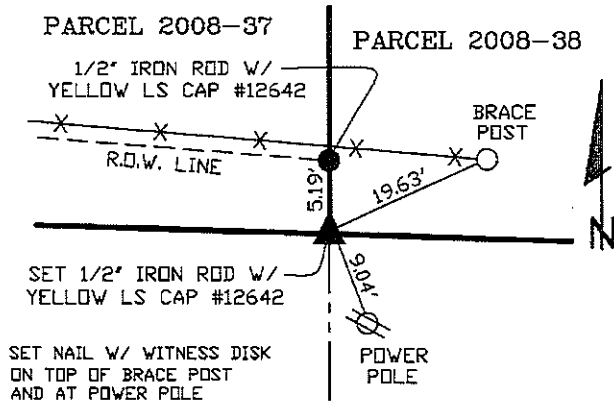
SW CORNER NE1/4 NE1/4 - SET 1/2" IRON ROD W/YELLOW LS CAP #12642 - RUN STRAIGHT LINES FROM OPPOSITE 1/4 1/4 SECTION CORNERS AND SET AT THE POINT OF INTERSECTION

**PLAN VIEW**

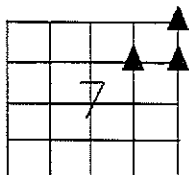
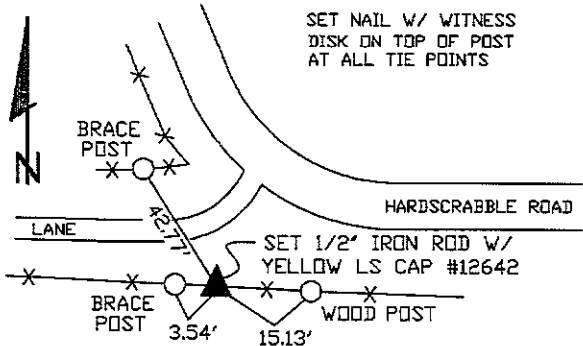
**NE CORNER**



**SE CORNER NE1/4 NE1/4**



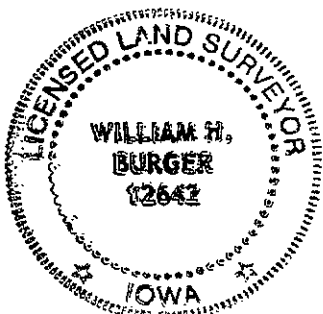
**SW CORNER NE1/4 NE1/4**



SEC. 7 TWP. 86N RANGE 3W

**CORNERS TO BE INDEXED**

NE CORNER	7	86N	3W
SE CORNER NE1/4 NE1/4	7	86N	3W
SW CORNER NE1/4 NE1/4	7	86N	3W



I hereby certify that this land surveying document was prepared and related survey work was performed by me or under my direct personal supervision and that I am a duly licensed Land Surveyor under the laws of the State of Iowa.

*William H. Burger* 5/02/08  
 William H. Burger Date

License number 12642

My license renewal date is December 31, 2008

Pages or Sheets covered by this seal: Sheet 1 of 1