

Lowell

Prepared by Wm. Burger Land Surveyors

510 3rd Street West Court, Worthington, Iowa

Phone 319 - 855 2028

UNITED STATES PUBLIC LAND SURVEY CORNER CERTIFICATE

Land Survey Monuments situated in Section 6, Township 86N, Range 3W, of the Fifth Principal Meridian, Jones County, Iowa. Previously recorded in NA in County Recorder's Office.

Monument Description and Remarks: (No Corner Certificates found at the County Recorders Office)

S1/4 CORNER USED 1985 TIES FOUND AT ENGINEERS OFFICE FOUND 5/8" IRON ROD

SE CORNER SE1/4 NW FRAC. 1/4 RUN STRAIGHT LINES FROM OPPOSITE 1/4 CORNERS AND SET 1/2" IRON ROD W/RLS CAP AT SAID POINT OF INTERSECTION

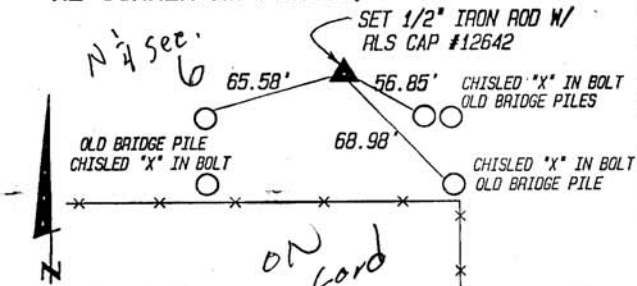
NE CORNER SE1/4 NW FRAC. 1/4 SET 1/2" IRON ROD W/RLS CAP #12642 ON LINE AND MID WAY BETWEEN CENTER OF SECTION AND THE N1/4 CORNER

NE CORNER NW FRAC. 1/4 SET 1/2" IRON ROD W/RLS CAP #12642 AT PROPORTIONATE DISTANCE FROM NE CORNER OF SAID SECTION 6 ON LINE WITH NW CORNER AND THE NE CORNER OF SAID SECTION 6

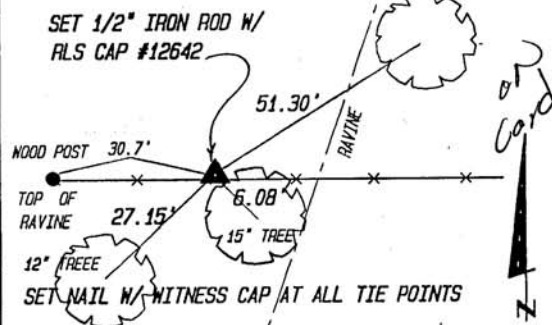
ON LINE WITH NW CORNER AND THE NE CORNER OF SAID SECTION 6

PLAN VIEW

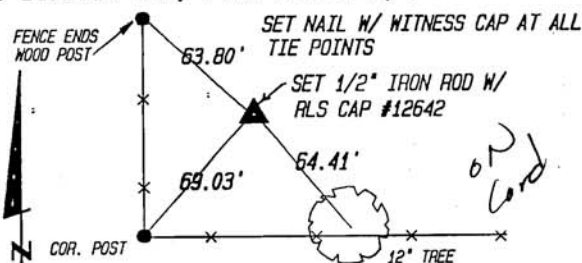
NE CORNER NW FRAC. 1/4



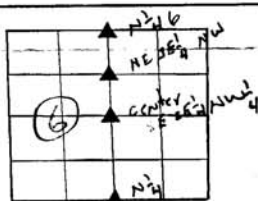
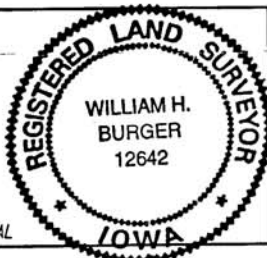
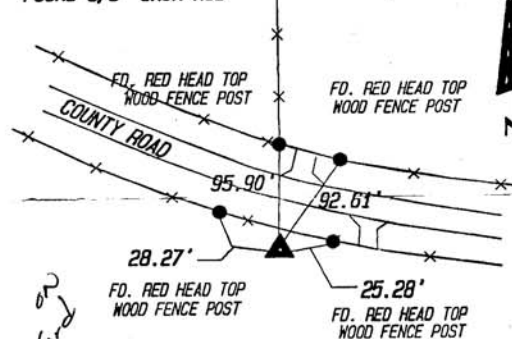
SE CORNER SE1/4 NW1/4



NE CORNER SE1/4 NW FRAC. 1/4



S1/4 CORNER
FOUND 5/8" IRON ROD



SEC. 6 TWP. 86N 1 RANGE 3W

I hereby certify that this land surveying document was prepared and related survey work was performed by me or under my direct personal supervision and that I am a duly licensed Land Surveyor under the laws of the State of Iowa.

William H. Burger 2/18/97
William H. Burger Date
License number 12642

My license renewal date is December 31, 1998

Pages or Sheets covered by this seal: Sheet 1 of 1

CORNERS TO BE INDEXED

Corner

COPY

S1/4	Section 6	Twp 86N	Range 3W
SE COR. SE1/4 NW1/4	Section 6	Twp 86N	Range 3W
NE COR. SE1/4 NW1/4	Section 6	Twp 86N	Range 3W
NE COR. NW1/4	Section 6	Twp 86N	Range 3W

86306c-021897 86307c-021897
86306h-021897
86306m-021897