

Marie Krutzfield, Recorder
 Jones County, Iowa

Prepared by Wm. Burger LandSurveyors 510 3rd Street West Court, Worthington, Iowa Phone 563 - 855 2028

UNITED STATES PUBLIC LAND SURVEY CORNER CERTIFICATE

Land Survey Monuments situated in Section 7, Township 86N, Range 3W, of the Fifth Principal Meridian, Jones County, Iowa. Previously recorded in N/A in the Office of the County Recorder

Monument Description and Remarks: (No Corner Certificates found at the County Recorders Office)

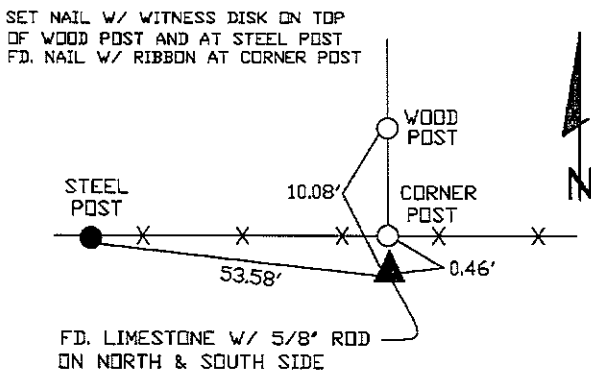
NE CORNER - FOUND LIMESTONE WITH 5/8" IRON ROD ON NORTH & SOUTH SIDE OF LIMESTONE

SE CORNER NE1/4 NE1/4 - SET 1/2" IRON ROD W/YELLOW LS CAP #12642 - SET ON LINE AND MIDWAY BETWEEN THE E1/4 CORNER AND THE NE CORNER

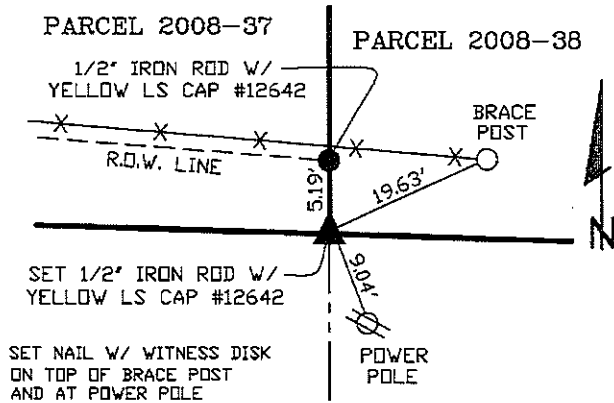
SW CORNER NE1/4 NE1/4 - SET 1/2" IRON ROD W/YELLOW LS CAP #12642 - RUN STRAIGHT LINES FROM OPPOSITE 1/4 1/4 SECTION CORNERS AND SET AT THE POINT OF INTERSECTION

PLAN VIEW

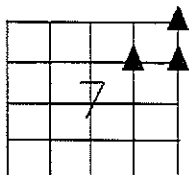
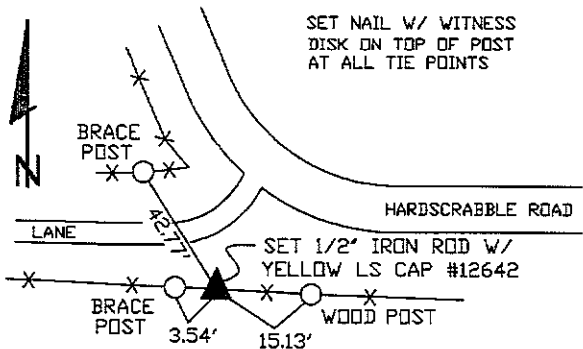
NE CORNER



SE CORNER NE1/4 NE1/4



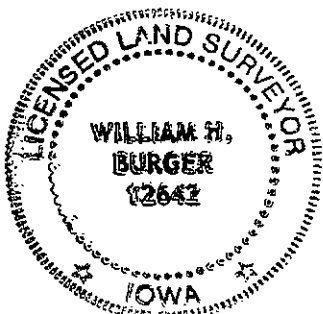
SW CORNER NE1/4 NE1/4



SEC. 7 TWP. 86N RANGE 3W

CORNERS TO BE INDEXED

NE CORNER	7	86N	3W
SE CORNER NE1/4 NE1/4	7	86N	3W
SW CORNER NE1/4 NE1/4	7	86N	3W



I hereby certify that this land surveying document was prepared and related survey work was performed by me or under my direct personal supervision and that I am a duly licensed Land Surveyor under the laws of the State of Iowa.

William H. Burger 5/02/08
 William H. Burger Date

License number 12642

My license renewal date is December 31, 2008

Pages or Sheets covered by this seal: Sheet 1 of 1

THIS IS NOT A CERTIFICATION

H

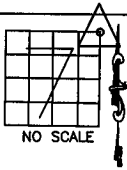
JONES COUNTY ENGINEER'S OFFICE, 19501 HWY. 64, ANAMOSA, IOWA, 52205 (319)462-3785

UNITED STATES PUBLIC LAND SURVEY CORNER CERTIFICATE

LAND SURVEY MONUMENTS SITUATED IN SECTION 7, TOWNSHIP 86 NORTH, RANGE 3 WEST OF THE 5TH P.M., JONES COUNTY, IOWA

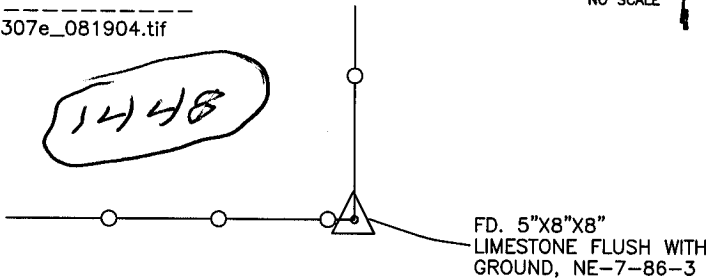
CORNERS TO BE INDEXED

CORNER SECTION TOWNSHIP RANGE
NORTHEAST 7 86N 3W
OFFICE FILE NO.



86307e_081904.tif

1448



FD. 5"x8"x8" LIMESTONE FLUSH WITH GROUND, NE-7-86-3

REF:
JONES COUNTY SURVEY CREW,
POSTEL-LEWISON-HAUGLIE
7-29-82
BK. 254 P-51

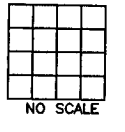
86307e_011905.tif

PREVIOUSLY RECORDED IN BOOK _____, PAGE _____
MONUMENT DESCRIPTION AND HOW ESTABLISHED FOUND _____

5"x8"x8"x2-1/2" LIMESTONE SETTING ON END AGAINST S-EDGE OF CORNER POST. LIMESTONE ON LINE WITH FENCES NORTH AND WEST. SET 2-5/8"x24" REBARS EACH SIDE OF STONE AND TIED OUT AS INDICATED. NORTHEAST CORNER SECTION 7, TOWNSHIP 86 NORTH, RANGE 3 WEST OF THE 5TH PRINCIPAL MERIDIAN, JONES COUNTY, IOWA.

CORNERS TO BE INDEXED

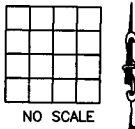
CORNER SECTION TOWNSHIP RANGE
OFFICE FILE NO.



PREVIOUSLY RECORDED IN BOOK _____, PAGE _____
MONUMENT DESCRIPTION AND HOW ESTABLISHED _____

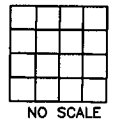
CORNERS TO BE INDEXED

CORNER SECTION TOWNSHIP RANGE
OFFICE FILE NO.



CORNERS TO BE INDEXED

CORNER SECTION TOWNSHIP RANGE
OFFICE FILE NO.



PREVIOUSLY RECORDED IN BOOK _____, PAGE _____
MONUMENT DESCRIPTION AND HOW ESTABLISHED _____

PREVIOUSLY RECORDED IN BOOK _____, PAGE _____
MONUMENT DESCRIPTION AND HOW ESTABLISHED _____

~~I hereby declare that this plat, survey or report was made by me or under my direct personal supervision and that I am a duly registered Land Surveyor under the laws of the State of Iowa.~~

Signed: _____

SEAL

JONES COUNTY ENGINEER'S OFFICE

19501 HWY. 64,
ANAMOSA, IOWA,
52205 (319)462-3785