

2001 1935

FILED
RECORDERS OFFICE
JONES COUNTY IOWA

01 JUN -7 AM 11:39

MARIE KRUTZFIELD
RECORDER 6.00Pd

Prepared by Wm. Burger Land Surveyors

510 3rd Street West Court, Worthington, Iowa

Phone 319 - 855 2028

UNITED STATES PUBLIC LAND SURVEY CORNER CERTIFICATE

Land Survey Monuments situated in Section 8, Township 86N, Range 3W, of the Fifth Principal Meridian, Jones County, Iowa. Previously recorded in N/A in the Office of the County Recorder

Monument Description and Remarks: (No Corner Certificates found at the County Recorders Office)

SW CORNER NW1/4 SW1/4 - SET 1/2" IRON ROD W/YELLOW LS CAP #12642 - SET ON LINE AND MIDWAY BETWEEN THE W1/4 CORNER AND THE SW CORNER

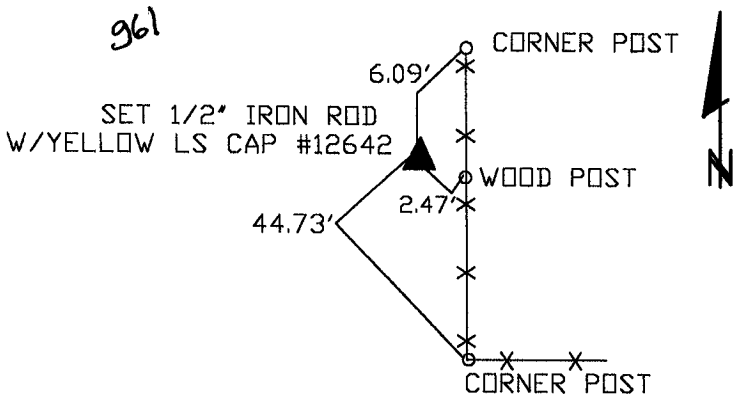
SE CORNER NW1/4 SW1/4 - SET 1/2" IRON ROD W/YELLOW LS CAP #12642 - RUN STRAIGHT LINES FROM OPPOSITE 1/4 1/4 CORNERS AND SET CORNER AT POINT OF INTERSECTION

NE CORNER NW1/4 SW1/4 - SET 1/2" IRON ROD W/YELLOW LS CAP #12642 - SET ON LINE AND MIDWAY BETWEEN THE W1/4 CORNER AND THE CENTER OF SECTION

PLAN VIEW

NE CORNER NW1/4 SW1/4

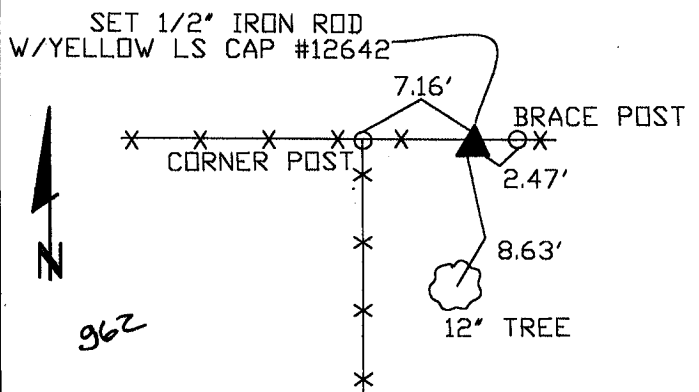
961



SET WITNESS CAP AT ALL TIE POINTS

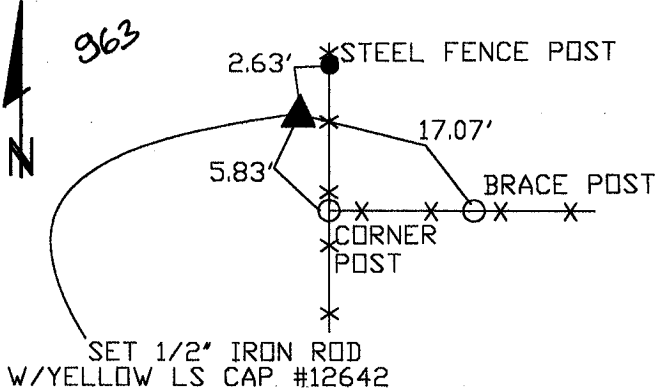
SW CORNER NW1/4 SW1/4

962



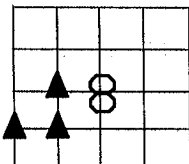
SET WITNESS CAP AT ALL TIE POINTS

963



SET WITNESS CAP AT ALL TIE POINTS

SE CORNER NW1/4 SW1/4



SEAL

SEC. 8 TWP. 86N RANGE 3W

I hereby certify that this land surveying document was prepared and related survey work was performed by me or under my direct personal supervision and that I am a duly licensed Land Surveyor under the laws of the State of Iowa.

William H. Burger 5/31/2001
William H. Burger Date

License number 12642

My license renewal date is December 31, 2002

Pages or Sheets covered by this seal: Sheet 1 of 1

CORNERS TO BE INDEXED

NE CORNER NW1/4 SW1/4	8	86N	3W
SE CORNER NW1/4 SW1/4	8	86N	3W
SW CORNER NW1/4 SW1/4	8	86N	3W