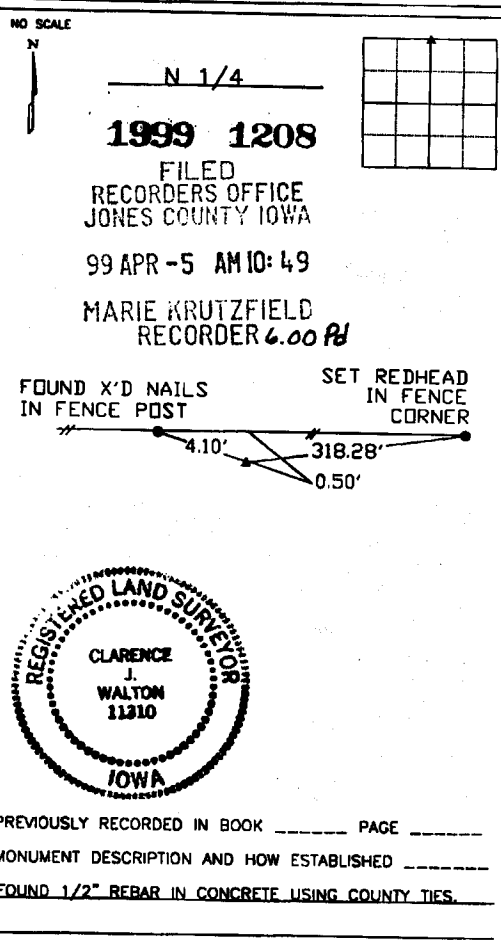
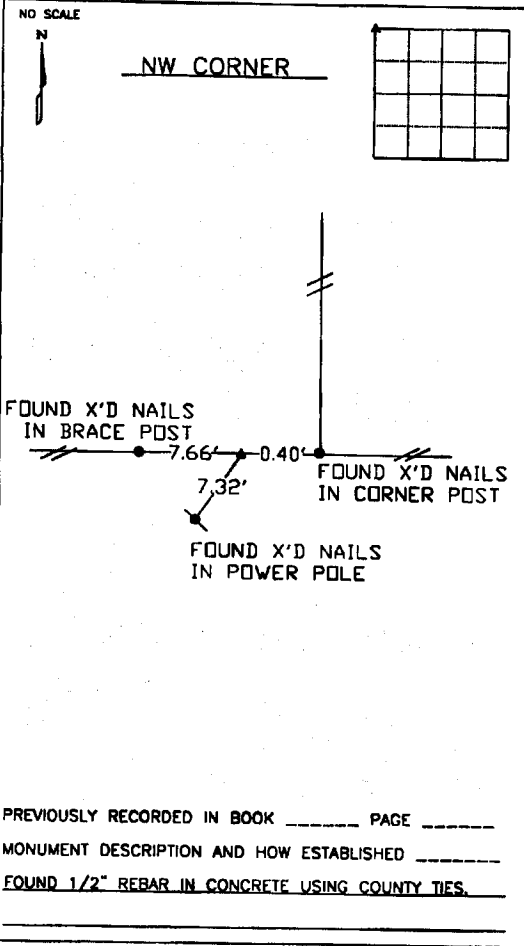


UNITED STATES PUBLIC LAND SURVEY CORNER CERTIFICATE

LAND SURVEY MONUMENTS SITUATED IN SECTION 9, TOWNSHIP 86 NORTH
RANGE 3 WEST OF THE 5TH P.M., JONES COUNTY, IOWA.



I hereby declare that this plat, survey or report was made by me or under my direct personal supervision and that I am a duly registered Land Surveyor under the laws of the State of Iowa.

Signed Clarence J. Walton Date 4/2/99

Clarence J. Walton L.S. Iowa Reg No. 11310
My Registration Renewal Date is December 31, 1999

CORNERS TO BE INDEXED

CORNER	SECTION	TOWNSHIP	RANGE
NW CORNER	9	T86N	R3W
N 1/4	9	T86N	R3W

BRAIN ENGINEERING, INC.
777 10TH STREET
MARION, IOWA 52302
(319) 373-1318

23289-10

86308e-040299
86309c-040299

SECTION CORNER CERTIFICATE

OF
 LAND SURVEY MONUMENTS SITUATED IN SECTION 8, TOWNSHIP 86 NORTH,
 RANGE 3 WEST, OF THE FIFTH PRINCIPAL MERIDIAN, JONES, COUNTY, IOWA.

PREVIOUSLY RECORDED IN BOOK _____ AT PAGE _____.

FOR RECORDER'S USE

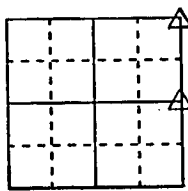
REASON FOR PREPARING CERTIFICATE:

- A) THERE IS NO CERTIFICATE FOR THE CORNER ON FILE WITH THE RECORDER OF THE COUNTY IN WHICH THE CORNER IS LOCATED.
- B) CORNER POSITION DIFFERS FROM THAT SHOWN IN THE PUBLIC RECORDS OF THE COUNTY IN WHICH THE CORNER IS LOCATED.
- C) THE CORNER MONUMENT HAS BEEN REPLACED OR MODIFIED.
- D) THE REFERENCE TIES REFERRED TO IN AN EXISTING PUBLIC RECORD ARE INCORRECT.

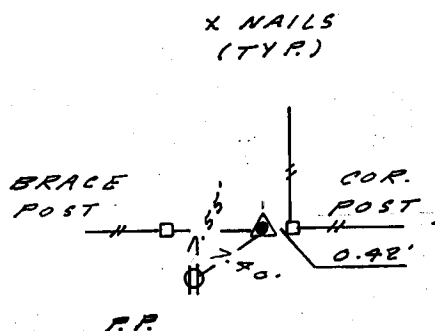
MONUMENT DESCRIPTION AND REMARKS :

RECOVERY TIE DRAWING

NE. COR. NE. 14 8-T86N-R3W



SE. COR. NE. 14 8-T86N-R3W

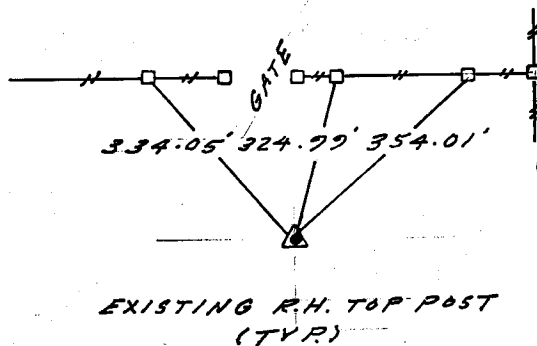


ON CARD
3-23-93

FOUND PIN IN CONC.



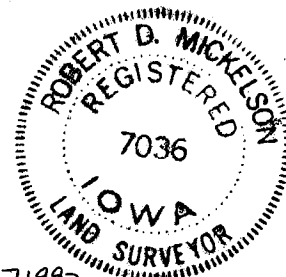
NOT TO SCALE



3-23-93 M.S.

FOUND PIN IN CONC 2' DEEP

I, ROBERT D. MICKELSON, CERTIFY THAT THE CORNER LOCATION(S) SHOWN ON THIS RECORD WERE DETERMINED BY ME OR UNDER MY DIRECTION AND CONTROL AND THAT THIS U.S. PUBLIC LAND SURVEY MONUMENT RECORD IS CORRECT AND COMPLETE TO THE BEST OF MY KNOWLEDGE AND BELIEF.



Robert D. Mickelson 7-19-93
 ROBERT D. MICKELSON L.S. NO 7036 DATE
 MY BIENNIAL REGISTRATION EXPIRES DECEMBER 31, 1994. 86308e-071993, 863080-071993

DIGITAL	<input checked="" type="checkbox"/> GOVERNMENT CORNER <input type="checkbox"/> 5/8" TIE PIN SET <input type="checkbox"/> CENTERLINE <input type="checkbox"/> EXISTING FENCE LINE <input type="checkbox"/> R.O.W. LINE	SHEET TITLE: U.S. PUBLIC LAND SURVEY CORNER CERTIFICATE PROJECT TITLE: SECTION CORNER TIES		MMS CONSULTANTS, INC. Iowa City, Iowa 319-351-8282
	C.D. G.L.R. C.R. R.D.M. A.P. R.D.M. DATE 7/17/93	SCALE NONE		F.N.B. 328 P.N.B. 3593-001

SECTION CORNER CERTIFICATE

OF
 LAND SURVEY MONUMENTS SITUATED IN SECTION 8, TOWNSHIP 86 NORTH,
 RANGE 3 WEST, OF THE FIFTH PRINCIPAL MERIDIAN, JONES, COUNTY, IOWA.

PREVIOUSLY RECORDED IN BOOK _____ AT PAGE _____.

FOR RECORDER'S USE

REASON FOR PREPARING CERTIFICATE:

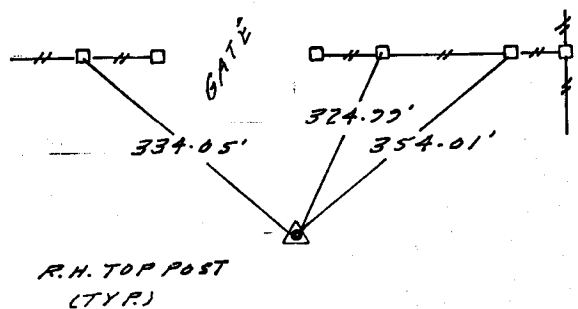
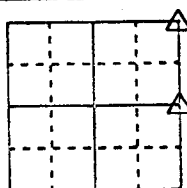
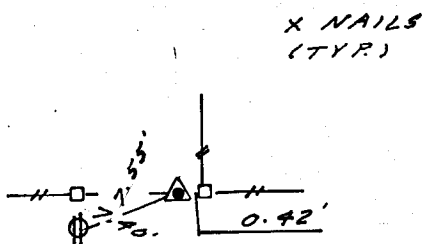
- A) THERE IS NO CERTIFICATE FOR THE CORNER ON FILE WITH THE RECORDER OF THE COUNTY IN WHICH THE CORNER IS LOCATED.
- B) CORNER POSITION DIFFERS FROM THAT SHOWN IN THE PUBLIC RECORDS OF THE COUNTY IN WHICH THE CORNER IS LOCATED.
- C) THE CORNER MONUMENT HAS BEEN REPLACED OR MODIFIED.
- D) THE REFERENCE TIES REFERRED TO IN AN EXISTING PUBLIC RECORD ARE INCORRECT.

MONUMENT DESCRIPTION AND REMARKS :

RECOVERY TIE DRAWING

NE. COR. NE. 14 8-86-3

SE. COR. NE. 14 8-86-3



NOT TO SCALE

ON CAED 8-23-93 M.S.

PIN IN CONG.

8-23-93 M.S.

PIN IN CONG. 2' DEEP

I, ROBERT D. MICKELSON, CERTIFY THAT THE CORNER LOCATION(S) SHOWN ON THIS RECORD WERE DETERMINED BY ME OR UNDER MY DIRECTION AND CONTROL AND THAT THIS U.S. PUBLIC LAND SURVEY MONUMENT RECORD IS CORRECT AND COMPLETE TO THE BEST OF MY KNOWLEDGE AND BELIEF.



Robert D. Mickelson 6-24-93
 ROBERT D. MICKELSON L.S. NO 7036 DATE
 MY BIENNIAL REGISTRATION EXPIRES DECEMBER 31, 1994.

86308e-062493, 86308o-062493

DZ/MOML △ GOVERNMENT CORNER ○ 5/8" THE PIN SET --- CENTERLINE - - - EXISTING FENCE LINE - - - R.O.W. LINE	SHEET TITLE: U.S. PUBLIC LAND SURVEY RECORD PROJECT TITLE: SECTION CORNER TIES	MMS CONSULTANTS, INC. Iowa City, Iowa 319-351-8282
ZWD G.L.R.	XIC RDM	AP RDM
SCALE: NONE		P.N. 328 P.N. 3523-001