

2002 0746

FILED
RECORDERS OFFICE
JONES COUNTY IOWA

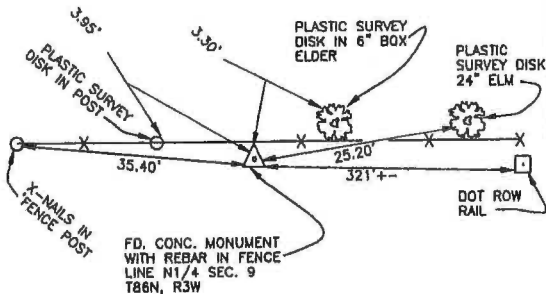
02 FEB 27 AM 8:57

MARIE KRUTZFIELD
RECORDER *NO FEE*

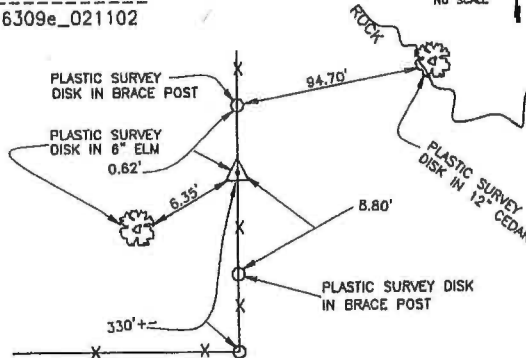
J.D. TJEPKES, LS. JONES COUNTY ENGINEER'S OFFICE, 19501 HWY. 64, ANAMOSA, IOWA, 52205 (319)462-3785

UNITED STATES PUBLIC LAND
SURVEY CORNER CERTIFICATELAND SURVEY MONUMENTS SITUATED IN SECTION 9, TOWNSHIP 86
NORTH, RANGE 3 WEST OF THE 5TH P.M., JONES COUNTY, IOWA

CORNERS TO BE INDEXED

CORNER SECTION TOWNSHIP RANGE
N1/4 9 86N 3W
OFFICE FILE NO.
86309c_021102TIES IN ENGINEER'S OFFICE
PREVIOUSLY RECORDED IN BOOK N/A, PAGE N/A
MONUMENT DESCRIPTION AND HOW ESTABLISHED FD. CONC.
MONUMENT WITH REBAR IN FENCE LINE PER TIES FROM ENGINEER'S
OFFICE. SET REFERENCE POINTS AND TIED OUT AS INDICATED.
NORTH QUARTER CORNER SEC. 9, TOWNSHIP 86 NORTH, RANGE
3 WEST, 5TH PM, JONES COUNTY, IOWA.

CORNERS TO BE INDEXED

CORNER SECTION TOWNSHIP RANGE
NORTHEAST 9 86N 3W
OFFICE FILE NO.
86309e_021102PREVIOUSLY RECORDED IN BOOK N/A, PAGE N/A
MONUMENT DESCRIPTION AND HOW ESTABLISHED FOUND CONC.
MONUMENT 2' ABOVE GROUND IN N-S FENCE LINE. SET
REFERENCE POINTS AND TIED OUT AS INDICATED. NORTHEAST
CORNER SECTION 9, TOWNSHIP 86 NORTH, RANGE 3 WEST,
5TH P.M., JONES COUNTY, IOWA.

CORNERS TO BE INDEXED

CORNER SECTION TOWNSHIP RANGE
OFFICE FILE NO.

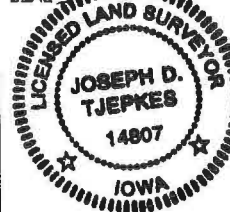
CORNERS TO BE INDEXED

CORNER SECTION TOWNSHIP RANGE
OFFICE FILE NO.PREVIOUSLY RECORDED IN BOOK _____, PAGE _____
MONUMENT DESCRIPTION AND HOW ESTABLISHED _____PREVIOUSLY RECORDED IN BOOK _____, PAGE _____
MONUMENT DESCRIPTION AND HOW ESTABLISHED _____I hereby declare that this plat, survey or report
was made by me or under my direct personal
supervision and that I am a duly registered Land
Surveyor under the laws of the State of Iowa.

Signed:

Joseph D. Tjepkes L.S. Iowa Reg. No. 14807
My Registration Renewal Date is December 31, 2002

SEAL

J.D. TJEPKES LS 14807
JONES COUNTY
ENGINEER'S OFFICE19501 HWY. 64,
ANAMOSA, IOWA,
52205 (319)462-3785