

2002 0746

FILED
RECORDERS OFFICE
JONES COUNTY IOWA

02 FEB 27 AM 8:57

MARIE KRUTZFIELD
RECORDER NO FEE

J.D. TJEPKES, LS. JONES COUNTY ENGINEER'S OFFICE, 19501 HWY. 64, ANAMOSA, IOWA, 52205 (319)462-3785

UNITED STATES PUBLIC LAND SURVEY CORNER CERTIFICATE

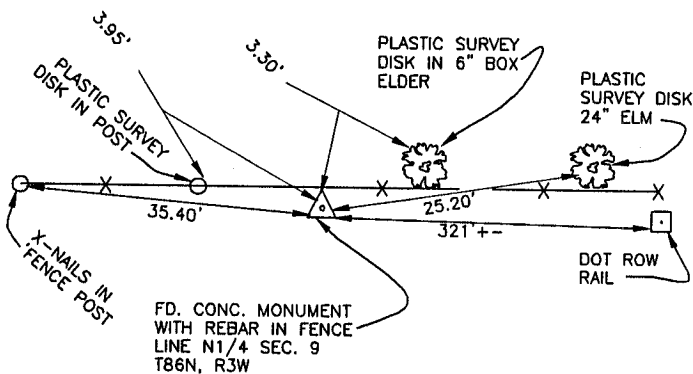
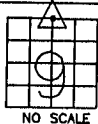
LAND SURVEY MONUMENTS SITUATED IN SECTION 9, TOWNSHIP 86
NORTH, RANGE 3 WEST OF THE 5TH P.M., JONES COUNTY, IOWA

CORNERS TO BE INDEXED

CORNER SECTION TOWNSHIP RANGE
N1/4 9 86N 3W

OFFICE FILE NO.

86309c_021102
02/02



FD. CONC. MONUMENT
WITH REBAR IN FENCE
LINE N1/4 SEC. 9
T86N, R3W

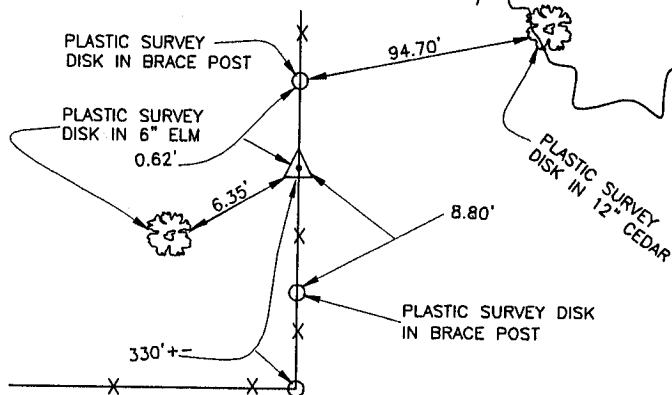
TIES IN ENGINEER'S OFFICE
PREVIOUSLY RECORDED IN BOOK N/A, PAGE N/A
MONUMENT DESCRIPTION AND HOW ESTABLISHED FD. CONC.
MONUMENT WITH REBAR IN FENCE LINE PER TIES FROM ENGINEER'S
OFFICE. SET REFERENCE POINTS AND TIED OUT AS INDICATED.
NORTH QUARTER CORNER SEC. 9, TOWNSHIP 86 NORTH, RANGE
3 WEST, 5TH PM, JONES COUNTY, IOWA.

CORNERS TO BE INDEXED

CORNER SECTION TOWNSHIP RANGE
NORTHEAST 9 86N 3W

OFFICE FILE NO.

86309e_021102
02/02

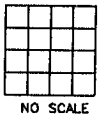


PREVIOUSLY RECORDED IN BOOK N/A, PAGE N/A
MONUMENT DESCRIPTION AND HOW ESTABLISHED FOUND CONC.
MONUMENT 2' ABOVE GROUND IN N-S FENCE LINE. SET
REFERENCE POINTS AND TIED OUT AS INDICATED. NORTHEAST
CORNER SECTION 9, TOWNSHIP 86 NORTH, RANGE 3 WEST,
5TH P.M., JONES COUNTY, IOWA.

CORNERS TO BE INDEXED

CORNER SECTION TOWNSHIP RANGE

OFFICE FILE NO.



CORNERS TO BE INDEXED

CORNER SECTION TOWNSHIP RANGE

OFFICE FILE NO.



PREVIOUSLY RECORDED IN BOOK _____, PAGE _____
MONUMENT DESCRIPTION AND HOW ESTABLISHED _____

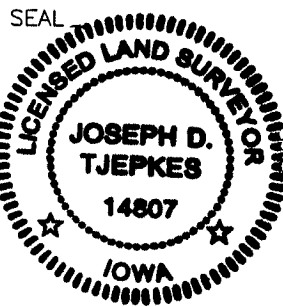
PREVIOUSLY RECORDED IN BOOK _____, PAGE _____
MONUMENT DESCRIPTION AND HOW ESTABLISHED _____

I hereby declare that this plat, survey or report was made by me or under my direct personal supervision and that I am a duly registered Land Surveyor under the laws of the State of Iowa.

Signed:

Joseph D. Tjepkes 2-21-02

Joseph D. Tjepkes L.S. Iowa Reg. No. 14807
My Registration Renewal Date is December 31, 2002



J.D. TJEPKES LS 14807
JONES COUNTY
ENGINEER'S OFFICE

19501 HWY. 64,
ANAMOSA, IOWA,
52205 (319)462-3785