

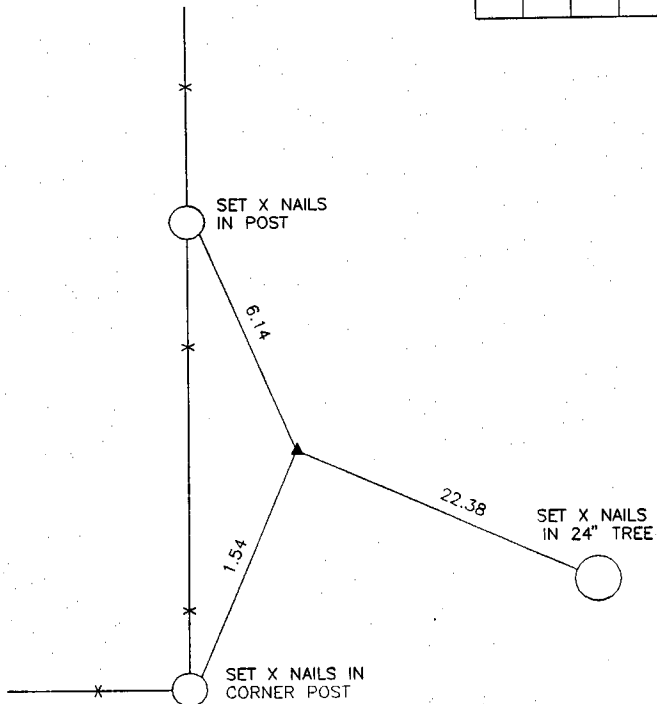
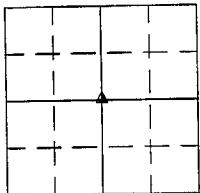
# UNITED STATES PUBLIC LAND SURVEY CORNER CERTIFICATE

LAND SURVEY MONUMENTS SITUATED IN SECTION 12, TOWNSHIP 84 NORTH  
RANGE 2 WEST OF THE 5TH P.M., JONES COUNTY, IOWA.

NO SCALE



CENTER SECTION



*on Card  
1-1-94*

PREVIOUSLY RECORDED IN BOOK \_\_\_\_\_ PAGE \_\_\_\_\_

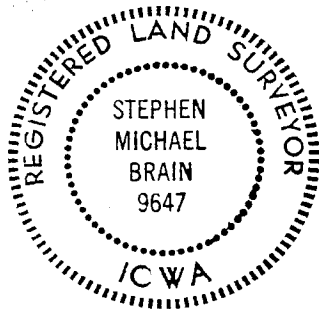
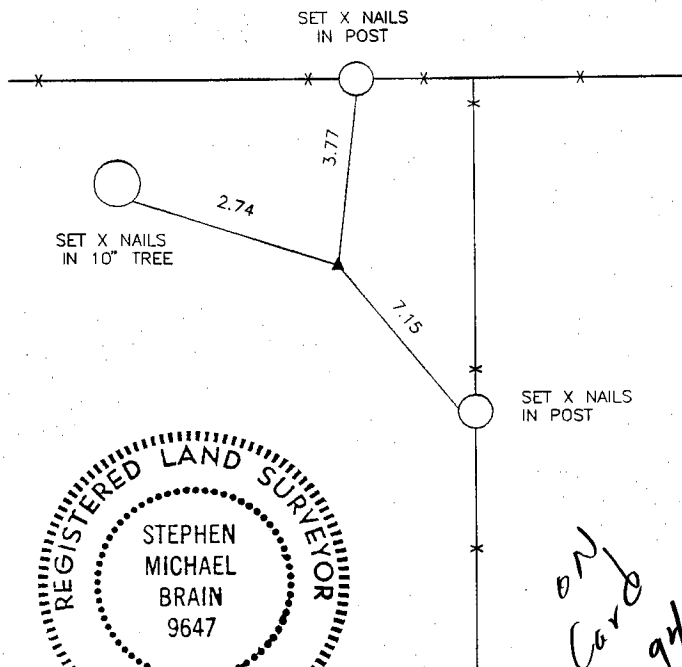
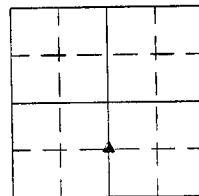
MONUMENT DESCRIPTION AND HOW ESTABLISHED \_\_\_\_\_

SET 1/2" REBAR W/ CAP #9647

NO SCALE



SW NW 1/4, SE 1/4



*on Card  
1-1-94*

PREVIOUSLY RECORDED IN BOOK \_\_\_\_\_ PAGE \_\_\_\_\_

MONUMENT DESCRIPTION AND HOW ESTABLISHED \_\_\_\_\_

SET 1/2" REBAR W/ CAP #9647

I hereby declare that this plat, survey or report was made by me or under my direct personal supervision and that I am a duly registered Land Surveyor under the laws of the State of Iowa.

Signed Stephen Michael Brain Date 5/23/94  
Stephen Michael Brain, P.E. & L.S. Iowa Reg No. 9647

CORNERS TO BE INDEXED

CORNER	SECTION	TOWNSHIP	RANGE
CENTER	12	84N	2W
SW NW 1/4, SE 1/4		84N	2W

**BRAIN ENGINEERING, INC.**

700 11TH STREET, SUITE 201  
MARION, IOWA 52302  
(319) 373-1318