

SECTION CORNER CERTIFICATE

OF
 LAND SURVEY MONUMENTS SITUATED IN SECTION 1, TOWNSHIP 84 NORTH,
 RANGE 2 WEST, OF THE FIFTH PRINCIPAL MERIDIAN, JONES, COUNTY, IOWA.

PREVIOUSLY RECORDED IN BOOK _____ AT PAGE _____

FOR RECORDER'S USE

REASON FOR PREPARING CERTIFICATE:

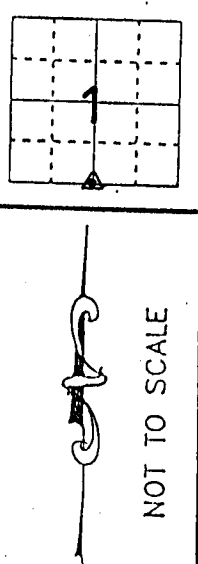
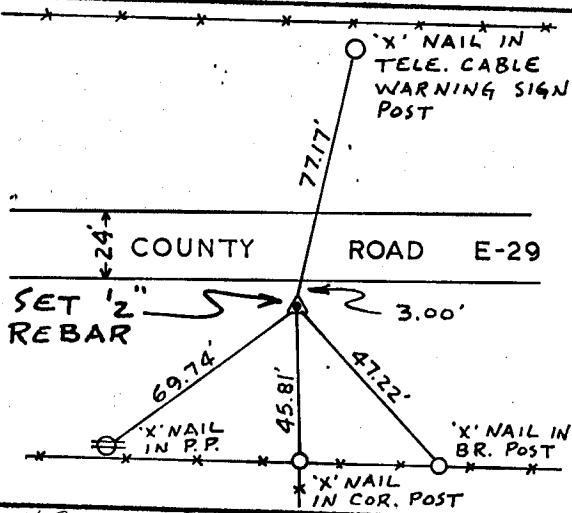
- A) THERE IS NO CERTIFICATE FOR THE CORNER ON FILE WITH THE RECORDER OF THE COUNTY IN WHICH THE CORNER IS LOCATED.
- B) CORNER POSITION DIFFERS FROM THAT SHOWN IN THE PUBLIC RECORDS OF THE COUNTY IN WHICH THE CORNER IS LOCATED.
- C) THE CORNER MONUMENT HAS BEEN REPLACED OR MODIFIED.
- D) THE REFERENCE TIES REFERRED TO IN AN EXISTING PUBLIC RECORD ARE INCORRECT.

MONUMENT DESCRIPTION AND REMARKS:

S¹/₄ CORNER SECTION 1-T84N-R2W SET 2" REBAR W/ U.S. CAP NO. 11954 3.00' OFF EDGE OF SLAB IN LINE W/ FENCE SOUTH 2" DEEP

RECOVERY TIE DRAWING

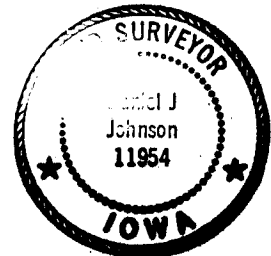
S¹/₄ COR. SEC. 1-84-2



ON CARD N¹/₄ SEC. 12 T84N R2W

I, DANIEL J. JOHNSON, CERTIFY THAT THE CORNER LOCATION(S) SHOWN ON THIS RECORD WERE DETERMINED BY ME OR UNDER MY DIRECTION AND CONTROL AND THAT THIS U.S. PUBLIC LAND SURVEY MONUMENT RECORD IS CORRECT AND COMPLETE TO THE BEST OF MY KNOWLEDGE AND BELIEF.

Daniel J. Johnson
 DANIEL J. JOHNSON L.S. NO 11954 DATE 4-16-93



GOVERNMENT CORNER 5/8" TIN SET CENTERLINE EXISTING FENCE LINE A.O.M. LINE	U.S. PUBLIC LAND SURVEY RECORD SURVEY FOR CALLAHAN	HALL AND HALL ENGINEERS, INC. 226 29TH STREET DRIVE S.E. CEDAR RAPIDS, IOWA 52403 319-362-9548
SWITZ DATE PROJECT DATE	DWN RWB CHK GDM APP DJJ DATE 1-27-93 SCALE NONE	P.N.C. OT 26 P.N.C. PROJ 4748