

SECTION CORNER CERTIFICATE

OF
 LAND SURVEY MONUMENTS SITUATED IN SECTION 7, TOWNSHIP 84 NORTH,
 RANGE 1 WEST, OF THE FIFTH PRINCIPAL MERIDIAN, JONES, COUNTY, IOWA.

PREVIOUSLY RECORDED IN BOOK _____ AT PAGE _____

FOR RECORDER'S USE

REASON FOR PREPARING CERTIFICATE:

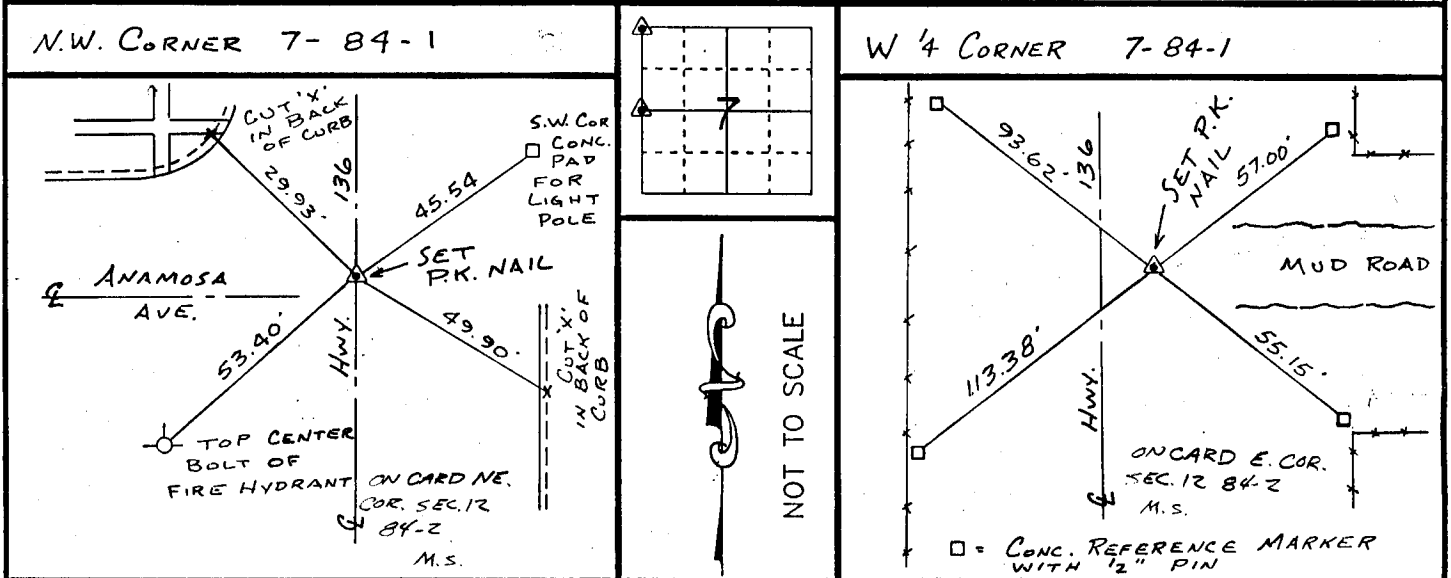
- A) THERE IS NO CERTIFICATE FOR THE CORNER ON FILE WITH THE RECORDER OF THE COUNTY IN WHICH THE CORNER IS LOCATED.
- B) CORNER POSITION DIFFERS FROM THAT SHOWN IN THE PUBLIC RECORDS OF THE COUNTY IN WHICH THE CORNER IS LOCATED.
- C) THE CORNER MONUMENT HAS BEEN REPLACED OR MODIFIED.
- D) THE REFERENCE TIES REFERRED TO IN AN EXISTING PUBLIC RECORD ARE INCORRECT.

MONUMENT DESCRIPTION AND REMARKS :

N.W. CORNER SECTION 7-84-1 SET P.K. NAIL ON E OF HWY 136 AND 6' N. E ANAMOSA AVENUE SET FROM D.O.T. TIES

W 1/4 CORNER SECTION 7-84-1 SET P.K. NAIL 10.25' EAST OF E OF HWY. 136 AND 7.00' S. SOUTH OF E OF MUD ROAD EAST SET FROM D.O.T. TIES

RECOVERY TIE DRAWING



I, DANIEL J. JOHNSON, CERTIFY THAT THE CORNER LOCATION(S) SHOWN ON THIS RECORD WERE DETERMINED BY ME OR UNDER MY DIRECTION AND CONTROL AND THAT THIS U.S. PUBLIC LAND SURVEY MONUMENT RECORD IS CORRECT AND COMPLETE TO THE BEST OF MY KNOWLEDGE AND BELIEF.

Daniel J. Johnson 1-31-92
 DANIEL J. JOHNSON L.S. NO 11954 DATE



| | | | |
|--------------------------------------|---|--|---|
| D Z E I G I R L | ▲ GOVERNMENT CORNER ○ 5/8" TIE PIN SET ——— CENTERLINE - - - EXISTING FENCE LINE - - - R.O.W. LINE | SHEET TITLE: U.S. PUBLIC LAND SURVEY RECORD PROJECT TITLE: PAULSEN SURVEY | HALL AND HALL ENGINEERS, INC. 226 29TH STREET DRIVE S.E. CEDAR RAPIDS, IOWA 52403 319-362-9548 |
| | D N R.W.B. X I G G.D.M. A P P | DATE 1-16-92 SCALE NONE | |