

SECTION CORNER CERTIFICATE

OF

LAND SURVEY MONUMENTS SITUATED IN SECTION 13, TOWNSHIP 84 NORTH,
RANGE Z WEST, OF THE FIFTH PRINCIPAL MERIDIAN, JONES, COUNTY, IOWA.

PREVIOUSLY RECORDED IN BOOK _____ AT PAGE _____

FOR RECORDER'S USE

REASON FOR PREPARING CERTIFICATE:

- A) THERE IS NO CERTIFICATE FOR THE CORNER ON FILE WITH THE RECORDER OF THE COUNTY IN WHICH THE CORNER IS LOCATED.
- B) CORNER POSITION DIFFERS FROM THAT SHOWN IN THE PUBLIC RECORDS OF THE COUNTY IN WHICH THE CORNER IS LOCATED.
- C) THE CORNER MONUMENT HAS BEEN REPLACED OR MODIFIED.
- D) THE REFERENCE TIES REFERRED TO IN AN EXISTING PUBLIC RECORD ARE INCORRECT.

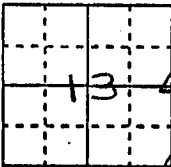
MONUMENT DESCRIPTION AND REMARKS :

E 4 CORNER SECTION 13, T84N, R2W SET P.K.
NAIL 5' E EAST OF E HWY 136

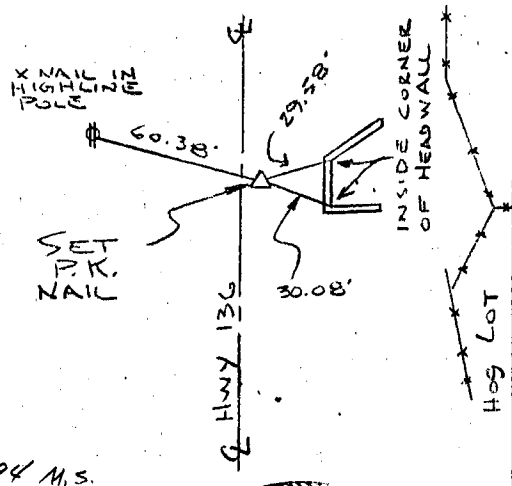
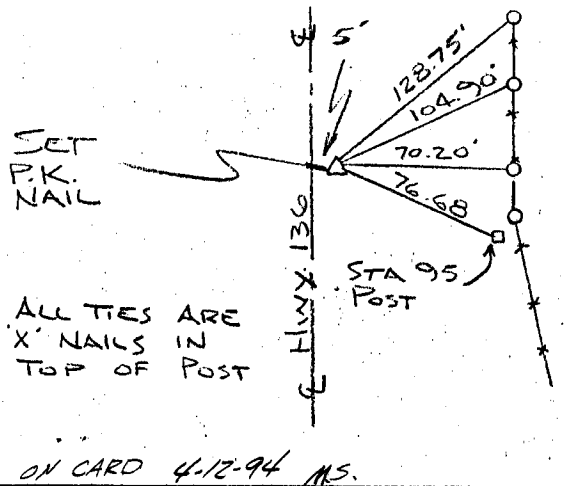
SE CORNER SECTION 13, T84N, R2W SET P.K. NAIL
4.25' EAST OF E HWY 136

RECOVERY TIE DRAWING

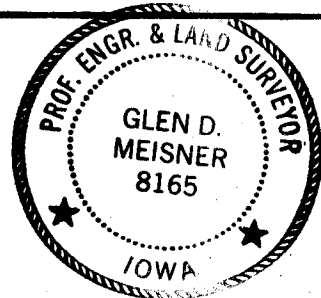
E 4 COR. 13-84-Z



SE COR 13-84-Z



I, GLEN D. MEISNER, CERTIFY THAT THE CORNER LOCATION(S) SHOWN ON THIS RECORD WERE DETERMINED BY ME OR UNDER MY DIRECTION AND CONTROL AND THAT THIS U.S. PUBLIC LAND SURVEY MONUMENT RECORD IS CORRECT AND COMPLETE TO THE BEST OF MY KNOWLEDGE AND BELIEF.



Glen D. Meisner 3-30-94
GLEN D. MEISNER L.S. NO 8165 DATE

DZM/FPL	<input type="checkbox"/> GOVERNMENT CORNER	SHEET	U.S. PUBLIC LAND SURVEY RECORD		H	HALL AND HALL ENGINEERS, INC.		
	<input type="checkbox"/> 5/8" TIE PIN SET	DATE				226 29TH STREET DRIVE S.E. CEDAR RAPIDS, IOWA 52403 319-362-9548		
	<input type="checkbox"/> CENTERLINE	PROJECT	JAMES CURTIN SURVEY					
	<input type="checkbox"/> EXISTING FENCE LINE	TITLE						
	<input type="checkbox"/> R.O.W. LINE							
	D	C	A	D	SCALE	F No	P No	
	NWB	RWB	GDM	PGDM	12-14-93	NONE	0T28	5088