

Jones County Marie Krutzfield
 Fee Book 2011 0916
 04/07/2011 @0930AM # Pages 1
 ZSC SEC COR CERT
 Total Fees: \$0.00

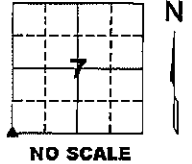
PREPARED BY
 CLARENCE J. WALTON, JONES COUNTY ENGINEER'S OFFICE, 19501 HWY. 64, ANAMOSA, IOWA, 52205 (319) 462-3785

UNITED STATES PUBLIC LAND SURVEY CORNER CERTIFICATE

**LAND SURVEY MONUMENTS SITUATED IN SECTION 7, TOWNSHIP 84 NORTH,
 RANGE 1 WEST OF THE 5TH PRINCIPAL MERIDIAN, JONES COUNTY, IOWA.**

S 1/4 CORNER SECTION 7-T84N-R1W
 STATE PLANE COORDINATE (NAD 83 IOWA NORTH)
 N 3506588.73
 E 5595774.64

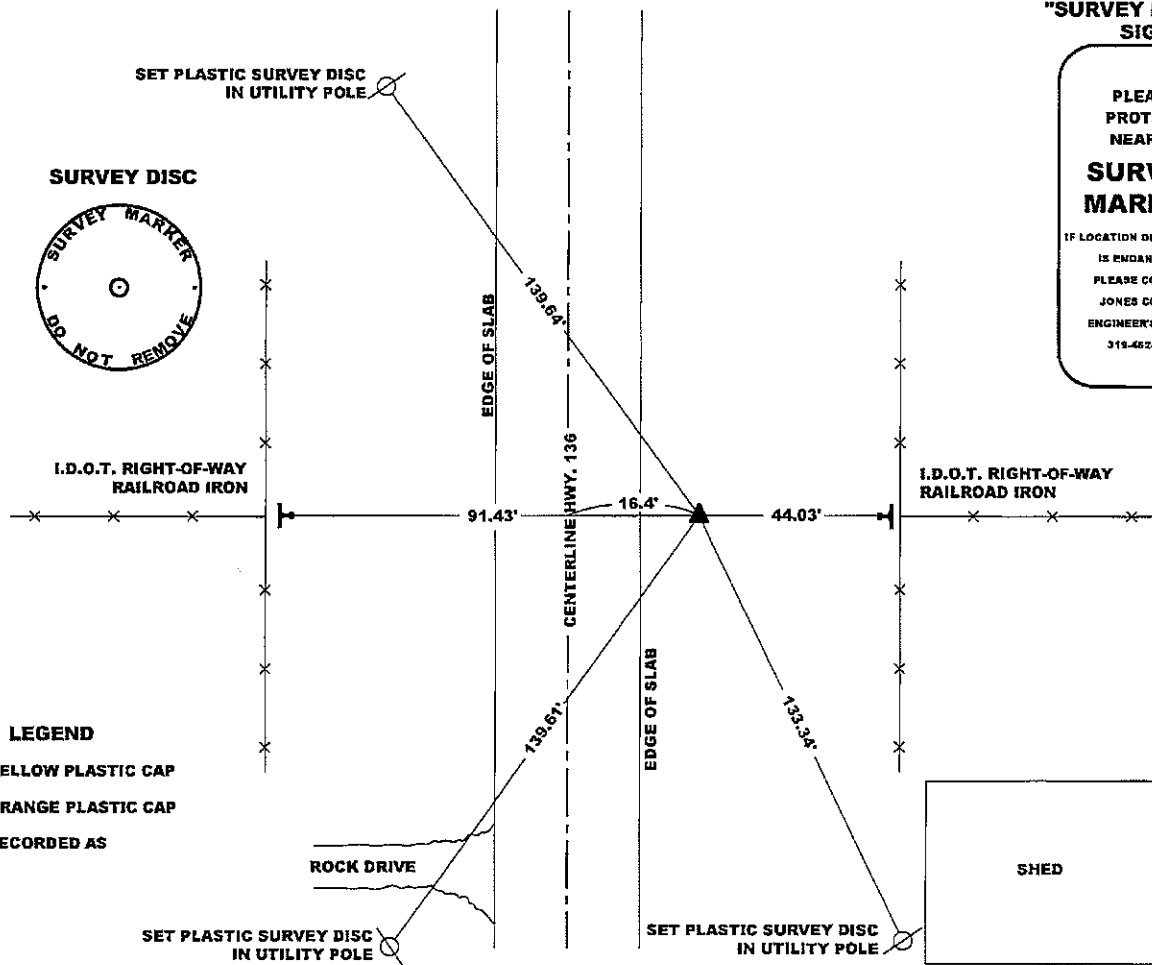
CORNER SECTION TOWNSHIP RANGE
 SW 7 T84N R1W



NOTE:
 THE STATE PLANE COORDINATE AS INDICATED IS FOR CONVENIENCE ONLY. THE TIES
 AS SHOWN SHOULD BE USED TO REPLACE THE CORNER, IF DESTROYED

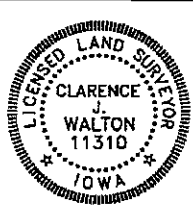
"SURVEY MARKER" SIGN

PLEASE
 PROTECT
 NEARBY
**SURVEY
 MARKER**
 IF LOCATION OF THIS MARK
 IS ENDANGERED
 PLEASE CONTACT
 JONES COUNTY
 ENGINEER'S OFFICE
 319-462-3785



LEGEND
 YELLOW PLASTIC CAP
 ORANGE PLASTIC CAP
 RECORDED AS

PREVIOUSLY RECORDED N/A
MONUMENT DESCRIPTION AND HOW ESTABLISHED FOUND 5/8" REBAR WITH YELLOW PLASTIC CAP #6581 1" BELOW PRESENT SHOULDER SURFACE.
THE ONLY TIES FOR THIS CORNER ARE HIGHWAY COMMISSION TIES DATING TO 1951 FOR PROJECT FN-814 WHICH REFERS TO A 4"x4"x48" CONCRETE MONUMENT WITH A 5/8" REBAR. SINCE THEN, THE RIGHT-OF-WAY AND ROADWAY HAS CHANGED CONSIDERABLY, THE OLD TIES REFERENCES ARE GONE
 MISC. FIELD BOOK 2009-2010, PAGE 137. DATE OF SURVEY: 3/21/11



I hereby certify that this land surveying document and the related survey work was performed by me or under my direct personal supervision and that I am a duly registered Land Surveyor under the laws of the State of Iowa.
 Signed: *Clarence J. Walton* 4/2/11
 Clarence J. Walton, L.S.
 My Registration Renewal Date is December 31, 2011
 Iowa License Number 11310
 Pages or sheets covered by this seal: 1 of 1

- A. THERE IS NO CERTIFICATE FOR THE CORNER ON FILE WITH THE RECORDER OF THE COUNTY IN WHICH THE CORNER IS LOCATED.
- B. THE CORNER MONUMENT HAS BEEN REPLACED OR MODIFIED.
- C. THE SURVEYOR IN RESPONSIBLE CHARGE OF THE LAND SURVEYING ACCEPTS A CORNER POSITION THAT DIFFERS FROM THAT SHOWN IN THE PUBLIC RECORDS OF THE COUNTY IN WHICH THE CORNER IS LOCATED.
- D. THE REFERENCE TIES REFERRED TO IN AN EXISTING PUBLIC RECORD NO LONGER EXIST.
- E. ADDED TIES TO FACILITATE LOCATING SECTION CORNER MONUMENT.

CORNERS TO BE INDEXED

CORNER	SECTION	TOWNSHIP	RANGE
SW	7	84N	1W
NW	18	84N	1W
NE	13	84N	2W
SE	12	84N	2W

JONES COUNTY ENGINEER'S OFFICE



19501 HWY. 64, ANAMOSA, IOWA 52205
 (319) 462-3785

THIS IS NOT A CERTIFICATION

JONES COUNTY ENGINEER'S OFFICE, 19501 HWY. 64, ANAMOSA, IOWA, 52205 (319)462-3785

UNITED STATES PUBLIC LAND SURVEY CORNER CERTIFICATE

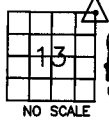
LAND SURVEY MONUMENTS SITUATED IN SECTION 13, TOWNSHIP 84
NORTH, RANGE 2 WEST OF THE 5TH P.M., JONES COUNTY, IOWA

CORNERS TO BE INDEXED

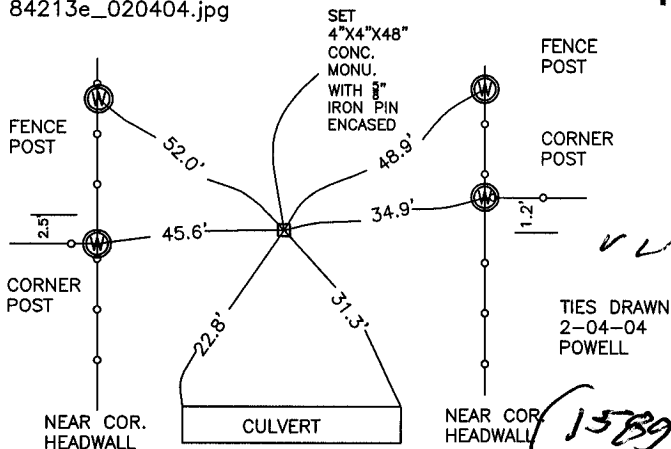
CORNER SECTION TOWNSHIP RANGE
NE 13 84N 2W

OFFICE FILE NO.

84213e_020404.jpg



NO SCALE

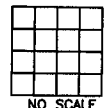


PREVIOUSLY RECORDED IN BOOK NA, PAGE NA
MONUMENT DESCRIPTION AND HOW ESTABLISHED _____
TIES ON RECORD IN JONES CO. ENGINEER'S OFFICE FROM IDOT
PROJECT FN #814 DATED 1951. SET 4"x4"x48" CONCRETE
MONUMENT WITH 5/8" IRON PIN HIGHWAY #136.

CORNERS TO BE INDEXED

CORNER SECTION TOWNSHIP RANGE

OFFICE FILE NO.



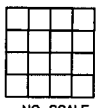
NO SCALE

PREVIOUSLY RECORDED IN BOOK _____, PAGE _____
MONUMENT DESCRIPTION AND HOW ESTABLISHED _____

CORNERS TO BE INDEXED

CORNER SECTION TOWNSHIP RANGE

OFFICE FILE NO.



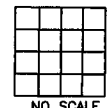
NO SCALE

PREVIOUSLY RECORDED IN BOOK _____, PAGE _____
MONUMENT DESCRIPTION AND HOW ESTABLISHED _____

CORNERS TO BE INDEXED

CORNER SECTION TOWNSHIP RANGE

OFFICE FILE NO.



NO SCALE

PREVIOUSLY RECORDED IN BOOK _____, PAGE _____
MONUMENT DESCRIPTION AND HOW ESTABLISHED _____

~~I hereby declare that this plat, survey or report was made by me or under my direct personal supervision and that I am a duly registered Land Surveyor under the laws of the State of Iowa.~~

Signed:

SEAL

JONES COUNTY
ENGINEER'S OFFICE

19501 HWY. 64,
ANAMOSA, IOWA,
52205 (319)462-3785

N