

Marie Krutzfield, Recorder
 Jones County, Iowa

Prepared by *Wm. Burger Land Surveyor* 510 3rd Street West Court, Worthington, Iowa Phone 563 - 855 2028

UNITED STATES PUBLIC LAND SURVEY CORNER CERTIFICATE

Land Survey Monuments situated in Section 8, Township 84N, Range 2W, of the Fifth Principal Meridian, Jones County, Iowa. Previously recorded in N/A in the Office of the County Recorder

Monument Description and Remarks: (No Corner Certificates found at the County Recorders Office)

NE CORNER SW1/4 SW1/4 - SET 1/2" IRON ROD W/ YELLOW LS CAP #12642 - RUN STRAIGHT LINES FROM OPPOSITE 1/4 1/4 CORNERS AND SET AT THE POINT OF INTERSECTION

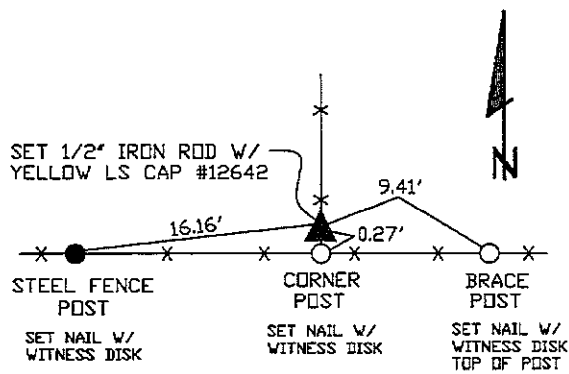
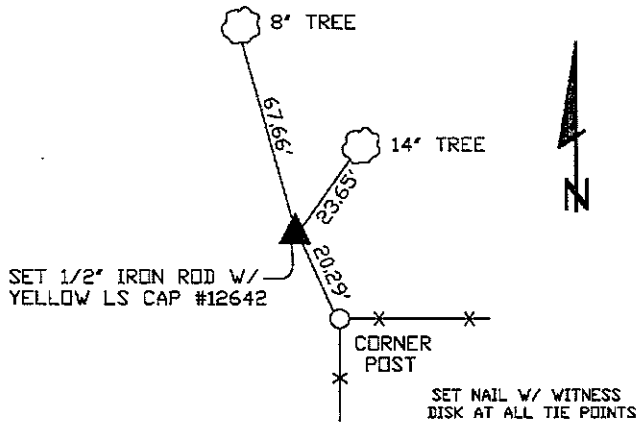
SW CORNER - SET 1/2" IRON ROD W/ YELLOW LS CAP #12642 - USED EXISTING FENCELINE EVIDENCE AND SET AT THE CORNER POST

SE CORNER SW1/4 SW1/4 - SET 1/2" IRON ROD W/ YELLOW LS CAP #12642 - OLD ROAD RECORDS INDICATE THAT ROAD WAS BUILT ON THE SECTION LINE, SET CORNER ON CENTERLINE OF EXISTING ROAD AND MIDWAY BETWEEN THE SW CORNER AND THE S1/4 CORNER

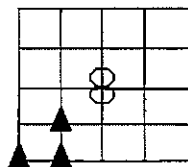
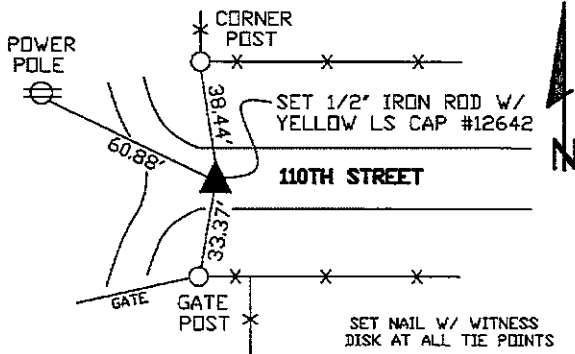
PLAN VIEW

NE CORNER SW1/4 SW1/4

SW CORNER



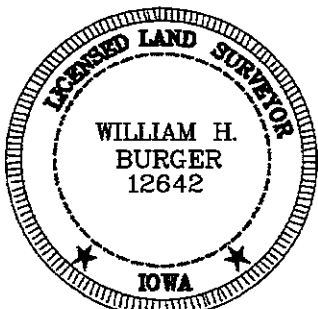
SE CORNER SW1/4 SW1/4



SEC. 8 TWP. 84N RANGE 2W

CORNERS TO BE INDEXED

NE CORNER SW1/4 SW1/4	8	84N	2W
SW CORNER	8	84N	2W
SE CORNER SW1/4 SW1/4	8	84N	2W



I hereby certify that this land surveying document was prepared and related survey work was performed by me or under my direct personal supervision and that I am a duly licensed Land Surveyor under the laws of the State of Iowa.

William H. Burger 10/5/09
 William H. Burger Date

License number 12642

My license renewal date is December 31, 2010

Pages or Sheets covered by this seal: Sheet 1 of 1