

COPY

Jones County Marie Krutzfield Recorder
Fee Book 2011 1673
06/29/2011 @0251PM # Pages 1
ZSC SEC COR CERT
Total Fees: \$9.00

PREPARED BY: SCOTT SURVEY, INC. P.O. BOX 315 CENTER POINT IOWA 52213 319-540-5263

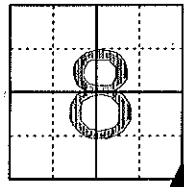
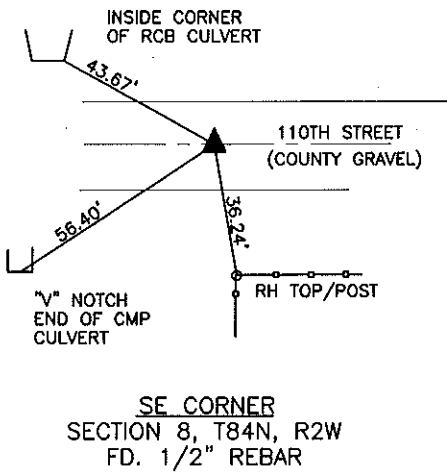
U.S. PUBLIC LAND SURVEY CORNER CERTIFICATE

FOR LAND SURVEY MONUMENTS SITUATED IN SECTION 8, TOWNSHIP 84 NORTH, RANGE 2 WEST, OF THE FIFTH PRINCIPAL MERIDIAN, JONES COUNTY, IOWA

REASON FOR PREPARING CERTIFICATE:

- A) THERE IS NO CERTIFICATE FOR THE CORNER ON FILE WITH THE RECORDER.
- B) CORNER TIES DIFFER FROM PREVIOUSLY RECORDED CERTIFICATE.

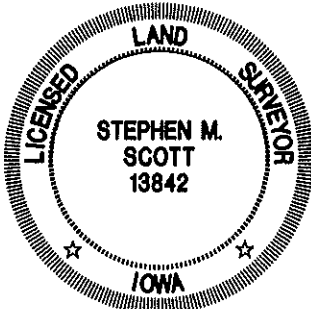
RECOVERY TIE DRAWING



MONUMENT DESCRIPTION AND REMARKS :

FOUND MONUMENT ACCORDING TO TIES PREVIOUSLY RECORDED IN BOOK 2001, PAGE 1792 IN THE OFFICE OF THE RECORDER, JONES COUNTY, IOWA.

MONUMENT DESCRIPTION AND REMARKS :



I hereby certify that this land surveying document was prepared and the related survey work was performed by me or under my direct personal supervision and that I am a duly licensed Land Surveyor under the laws of the State of Iowa.

Stephen M. Scott June 29, 2011
 STEPHEN M. SCOTT, L.S. Iowa Lic. No. 13842

My license renewal date is December 31, 2012.

- ▲ GOVERNMENT CORNER
- 1/2" TIE PIN SET
- CENTERLINE
- EXISTING FENCE LINE
- R.O.W. LINE

U.S. PUBLIC LAND SURVEY CORNER CERTIFICATE

SECTION 8, T84N, R2W
SE CORNER

PROJECT NO.
1125501

NE
17

2001 1792

FILED
RECORDERS OFFICE
JONES COUNTY IOWA

01 MAY 29 AM 11:35

MARIE KRUTZFIELD
RECORDER 6.00 Pd

PREPARED BY
STEPHEN MICHAEL BRAIN, BRAIN ENGINEERING, INC., 777 10TH STREET, MARION, IOWA 52302 PH. (319) 373-1318

UNITED STATES PUBLIC LAND SURVEY CORNER CERTIFICATE

LAND SURVEY MONUMENTS SITUATED IN SECTION 8, TOWNSHIP 84 NORTH
RANGE 2 WEST OF THE 5TH P.M., JONES COUNTY, IOWA.

NO SCALE

PREVIOUSLY RECORDED IN BOOK _____ PAGE _____
MONUMENT DESCRIPTION AND HOW ESTABLISHED _____

957

NO SCALE

84217 e -052501

PREVIOUSLY RECORDED IN BOOK _____ PAGE _____
MONUMENT DESCRIPTION AND HOW ESTABLISHED _____
SET 1/2 REBAR WITH YELLOW CAP #9647 3" DEEP



I hereby certify that this land surveying document and the related survey work was performed by me or under my direct personal supervision and that I am a duly licensed Land Surveyor under the laws of the State of Iowa.

Signed: *Stephen Michael Brain* Date: 5/25/01
Stephen Michael Brain, L.S.
My License Renewal Date is December 31, 2002
License Number 9647
Pages or sheets covered by this seal: 1/1

- A. THERE IS NO CERTIFICATE FOR THE CORNER ON FILE WITH THE RECORDER OF THE COUNTY IN WHICH THE CORNER IS LOCATED
- B. THE SURVEYOR IN RESPONSIBLE CHARGE OF THE LAND SURVEYING ACCEPTS A CORNER POSITION WHICH DIFFERS FROM THAT SHOWN IN THE PUBLIC RECORDS OF THE COUNTY IN WHICH THE CORNER IS LOCATED.
- C. THE CORNER MONUMENT IS REPLACED OR MODIFIED IN ANY WAY.
- D. THE REFERENCE TIES REFERRED TO IN AN EXISTING PUBLIC RECORD ARE NOT CORRECT.

CORNERS TO BE INDEXED			
CORNER	SECTION	TOWNSHIP	RANGE
SE CORNER	8	T84N	R2W

BRAIN ENGINEERING, INC.
777 10TH STREET
MARION, IOWA 52302 27471-10
(319) 373-1318