

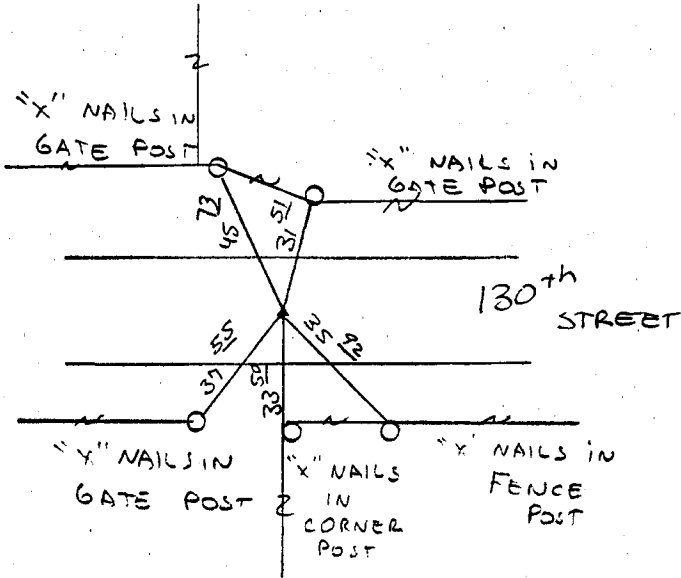
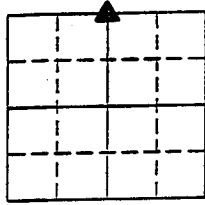
UNITED STATES PUBLIC LAND SURVEY CORNER CERTIFICATE

LAND SURVEY MONUMENTS SITUATED IN SECTION 1, TOWNSHIP 84 NORTH
RANGE 2 WEST OF THE 5TH P.M., JONES COUNTY, IOWA.

NO SCALE



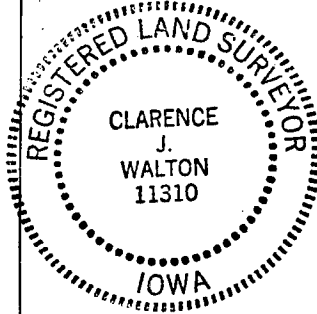
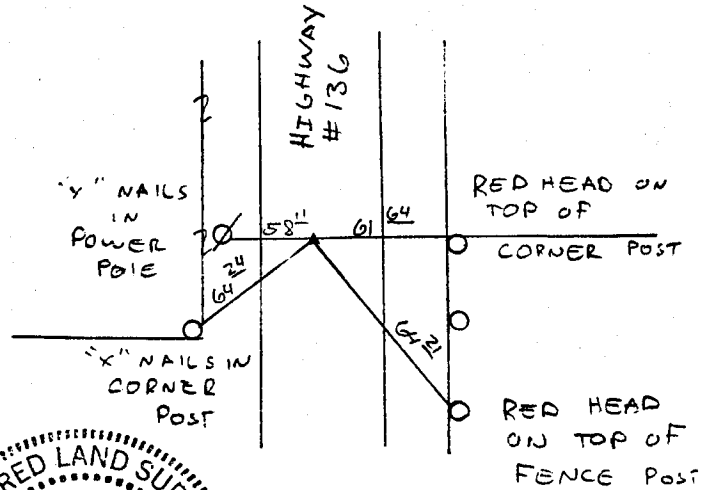
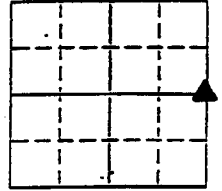
N 1/4 CORNER



NO SCALE



E 1/4 CORNER



E 1/4 COR. SEC. 1
D. MOON
3-9-95

PREVIOUSLY RECORDED IN BOOK _____ PAGE _____

MONUMENT DESCRIPTION AND HOW ESTABLISHED FOUND

1/2" REBAR 6" BELOW SURFACE

PREVIOUSLY RECORDED IN BOOK _____ PAGE _____

MONUMENT DESCRIPTION AND HOW ESTABLISHED FOUND

PK SPIKE AT SURFACE, 1.15'

WEST OF E

I hereby certify that this plat, survey or report was made by me or under my direct personal supervision and that I am a duly registered Land Surveyor under the laws of the State of Iowa.

Signed Clarence J. Walton Date 2/9/95
Clarence J. Walton, L.S. Iowa Reg No. 11310
My Registration Renewal Date Is December 31, 1995

CORNERS TO BE INDEXED

CORNER	SECTION	TOWNSHIP	RANGE
<u>N 1/4</u>	<u>1</u>	<u>84</u>	<u>2</u>
<u>E 1/4</u>	<u>1</u>	<u>84</u>	<u>2</u>

BRAIN ENGINEERING, INC.

700 11TH STREET, SUITE 201
MARION, IOWA 52302
(319) 373-1318

14014.10