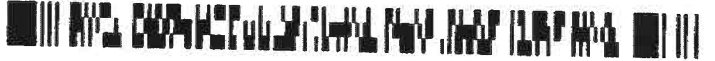


Instrument #: 2016-2457
 09/08/2016 10:55:06 AM Total Pages: 1
 ZSC SECTION CORNER CERTIFICATE
 Recording Fee: \$7.00 Transfer Tax: \$0
 Sheri L. Jones, Recorder, Jones County Iowa



Prepared by Wm. Burger Land Surveyor 510 3rd Street West Court, Worthington, Iowa 52078 Phone 563 - 855 2028

UNITED STATES PUBLIC LAND SURVEY CORNER CERTIFICATE

Land Survey Monuments situated in Section 1, Township 84N, Range 2W, of the Fifth Principal Meridian, Jones County, Iowa. Previously recorded in N/A in the Office of the County Recorder

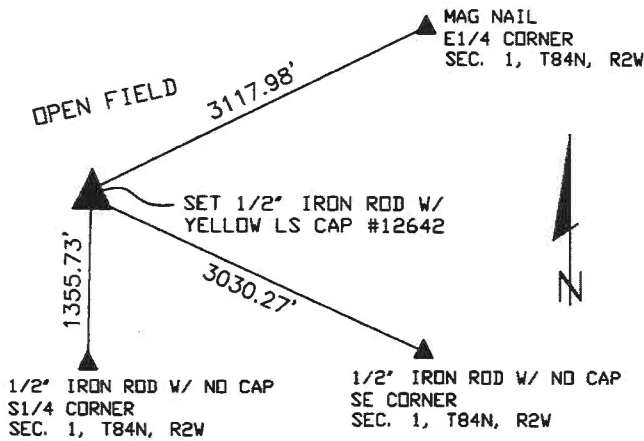
Monument Description and Remarks: No Corner Certificates found at the County Recorder's Office

NW CORNER SW1/4 SE1/4 - SET 1/2" IRON ROD WITH YELLOW LS CAP #12642 - SET ONLINE AND MIDWAY BETWEEN THE S1/4 CORNER AND THE CENTER OF SECTION

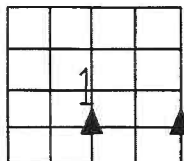
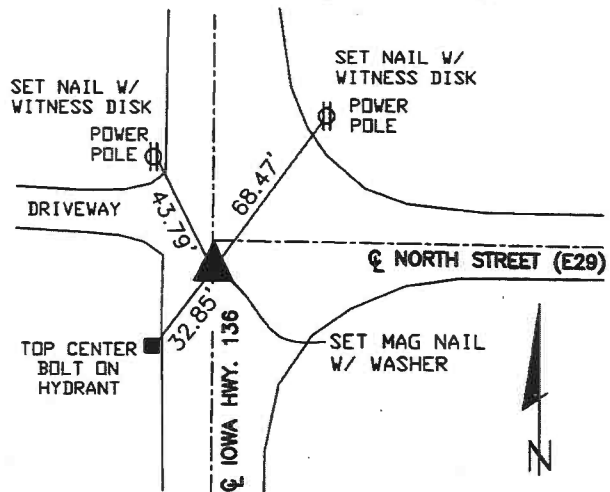
NE CORNER SE1/4 SE1/4 - SET MAG NAIL WITH WASHER - SET ONLINE AND MIDWAY BETWEEN THE SE CORNER AND THE E1/4 CORNER

PLAN VIEW

NW CORNER SW1/4 SE1/4



NE CORNER SE1/4 SE1/4



SEC. 1 TWP. 84N RANGE 2W

CORNERS TO BE INDEXED

NW CORNER SW1/4 SE1/4	1	84N	2W
NE CORNER SE1/4 SE1/4	1	84N	2W



I hereby certify that this land surveying document was prepared and related survey work was performed by me or under my direct personal supervision and that I am a duly licensed Land Surveyor under the laws of the State of Iowa.

William H. Burger 9/18/16
 William H. Burger Date

License number 12642

My license renewal date is December 31, 2016

Pages or Sheets covered by this seal: Sheet 1 of 1