

2006. 0256

FILED  
RECORDERS OFFICE  
JONES COUNTY IOWA

05 JAN 19 AM 10:52

MARIE KRUTZFIELD  
RECORDER 7.00 Pd

Prepared by Wm. Burger LandSurveyors 510 3rd Street West Court, Worthington, Iowa Phone 563 - 855 2028

### UNITED STATES PUBLIC LAND SURVEY CORNER CERTIFICATE

Land Survey Monuments situated in Section 6, Township 84N, Range 1W, of the Fifth Principal Meridian, Jones County, Iowa. Previously recorded in N/A in the Office of the County Recorder

Monument Description and Remarks: (No Corner Certificates found at the County Recorders Office)

NW CORNER - SET 1/2" IRON ROD W/ YELLOW LS CAP #12642 - USED D.O.T. CORNER TIES TO RESET THIS CORNER

NE CORNER - FOUND 5/8" IRON ROD W/ NO CAP

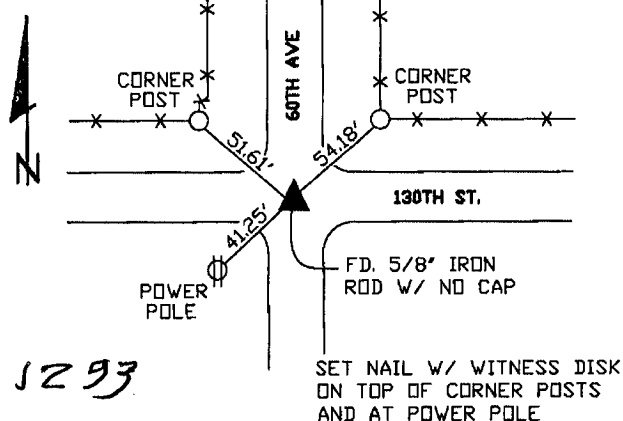
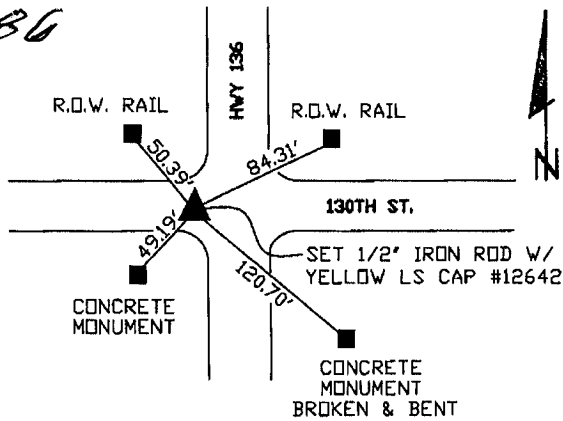
CENTER OF SECTION - FOUND 5/8" IRON ROD W/ NO CAP

N1/4 CORNER - SET 1/2" IRON ROD W/ LS CAP #12642 - USED INFORMATION FROM A SECTION CORNER SURVEY FOUND AT THE IOWA D.O.T. DISTRICT OFFICE

84106a-011606.tif  
NW CORNER

PLAN VIEW 84106c-011606.tif  
NE CORNER

1586



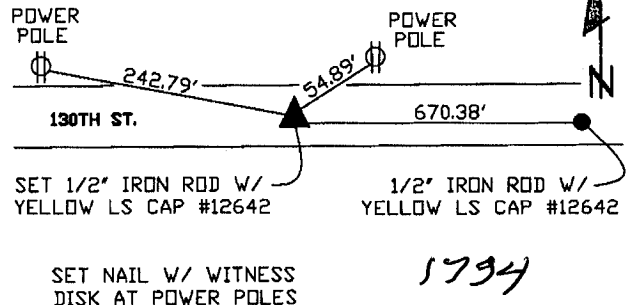
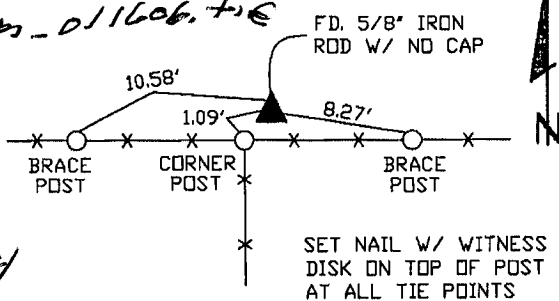
1293

CENTER OF SECTION

N1/4 CORNER

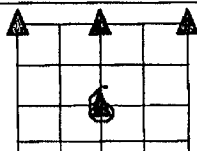
84106b-011606.tif

84106c-011606.tif



1294

1794



CORNERS TO BE INDEXED

NW CORNER	6	84N	1W
NE CORNER	6	84N	1W

# THIS IS NOT A CERTIFICATION

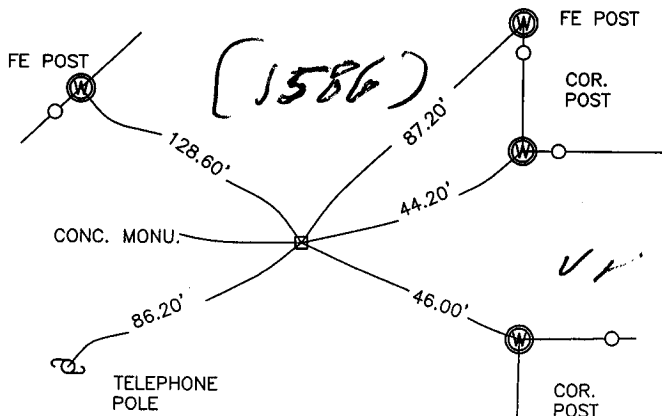
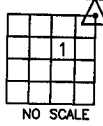
JONES COUNTY ENGINEER'S OFFICE, 19501 HWY. 64, ANAMOSA, IOWA, 52205 (319)462-3785

## UNITED STATES PUBLIC LAND SURVEY CORNER CERTIFICATE

LAND SURVEY MONUMENTS SITUATED IN SECTION 1, TOWNSHIP 84  
NORTH, RANGE 2 WEST OF THE 5TH P.M., JONES COUNTY, IOWA

### CORNERS TO BE INDEXED

CORNER SECTION TOWNSHIP RANGE  
NE 1 84N 2W  
OFFICE FILE NO.  
84201e\_020304.jpg

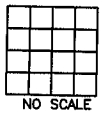


PREVIOUSLY RECORDED IN BOOK NA, PAGE NA  
MONUMENT DESCRIPTION AND HOW ESTABLISHED \_\_\_\_\_

PER TIES FROM JONES COUNTY ENGINEER'S OFFICE ON CARDS DATED  
1955 REF: PROJECT JONES CO. F-814(3) IOWA DOT

### CORNERS TO BE INDEXED

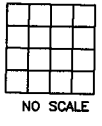
CORNER SECTION TOWNSHIP RANGE  
OFFICE FILE NO. \_\_\_\_\_



PREVIOUSLY RECORDED IN BOOK \_\_\_\_\_, PAGE \_\_\_\_\_  
MONUMENT DESCRIPTION AND HOW ESTABLISHED \_\_\_\_\_

### CORNERS TO BE INDEXED

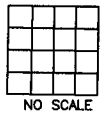
CORNER SECTION TOWNSHIP RANGE  
OFFICE FILE NO. \_\_\_\_\_



PREVIOUSLY RECORDED IN BOOK \_\_\_\_\_, PAGE \_\_\_\_\_  
MONUMENT DESCRIPTION AND HOW ESTABLISHED \_\_\_\_\_

### CORNERS TO BE INDEXED

CORNER SECTION TOWNSHIP RANGE  
OFFICE FILE NO. \_\_\_\_\_



PREVIOUSLY RECORDED IN BOOK \_\_\_\_\_, PAGE \_\_\_\_\_  
MONUMENT DESCRIPTION AND HOW ESTABLISHED \_\_\_\_\_

~~I hereby declare that this plat, survey or report was made by me or under my direct personal supervision and that I am a duly registered Land Surveyor under the laws of the State of Iowa.~~

Signed: \_\_\_\_\_

SEAL

JONES COUNTY  
ENGINEER'S OFFICE

19501 HWY. 64,  
ANAMOSA, IOWA,  
52205 (319)462-3785

J