

Instrument #: 2020-2652  
 08/24/2020 01:39:39 PM Total Pages: 1  
 ZSC SECTION CORNER CERTIFICATE  
 Recording Fee: \$7.00 Transfer Tax: \$0  
 Sheri L. Jones, Recorder, Jones County Iowa



Prepared by Wm. Burger Land Surveyor 510 3rd Street West Court, Worthington, Iowa 52078 Phone 563 - 855 2028

### UNITED STATES PUBLIC LAND SURVEY CORNER CERTIFICATE

Land Survey Monuments situated in Section 20 Township 84N Range 2W of the Fifth Principal Meridian, Jones County, Iowa. Previously recorded in N/A in the Office of the County Recorder

Monument Description and Remarks: (No Corner Certificates found at the County Recorder's Office)

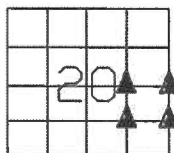
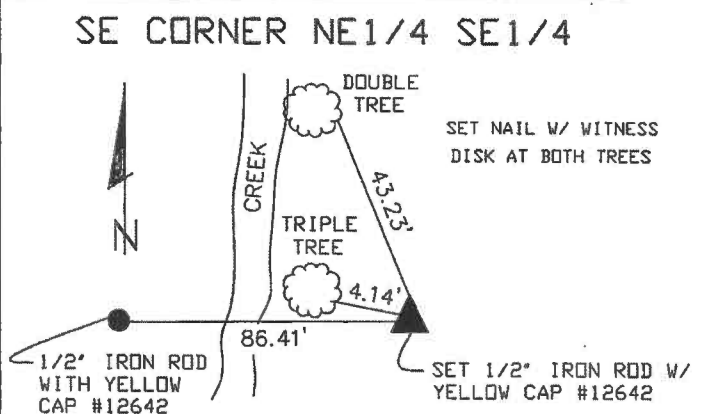
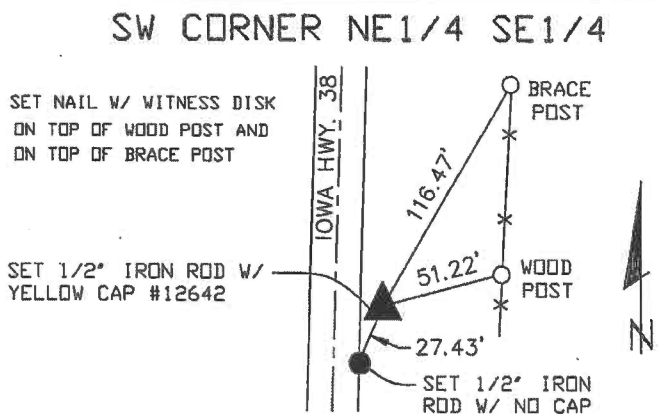
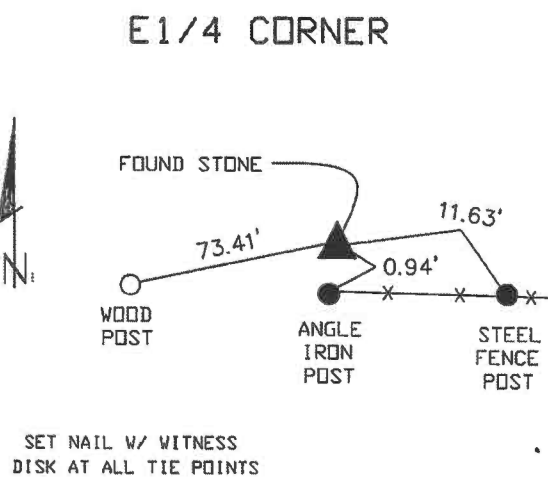
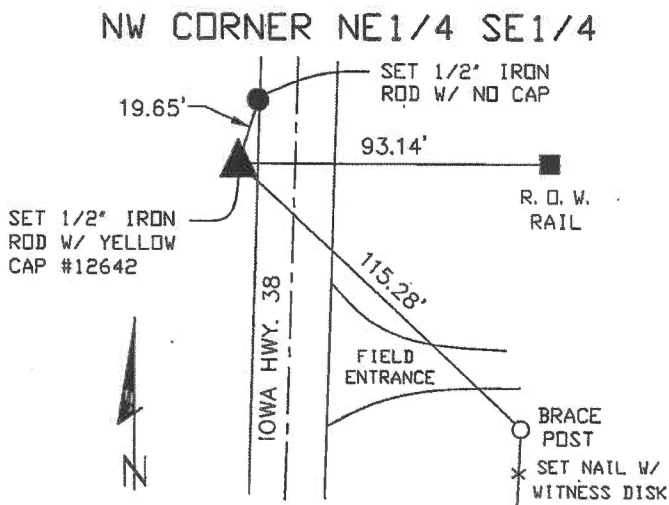
NW CORNER NE1/4 SE1/4 - SET 1/2" IRON ROD WITH YELLOW CAP #12642 - SET ON LINE AND MIDWAY BETWEEN THE CENTER OF SECTION AND THE E1/4 CORNER

E1/4 CORNER - FOUND STONE

SW CORNER NE1/4 SE1/4 - SET 1/2" IRON ROD WITH YELLOW CAP #12642 - RUN STRAIGHT LINES FROM OPPOSITE 1/4 1/4 CORNERS AND SET AT THE POINT OF INTERSECTION

SE CORNER NE1/4 SE1/4 - SET 1/2" IRON ROD WITH YELLOW CAP #12642 - SET ON LINE AND MIDWAY BETWEEN THE E1/4 CORNER AND THE SE CORNER

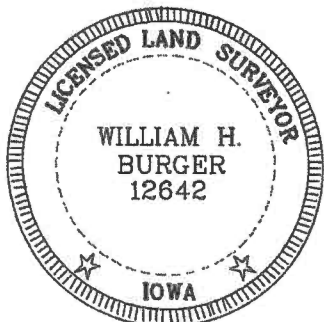
### PLAN VIEW



SEC. 20 TWP. 84N RANGE 2W

#### CORNERS TO BE INDEXED

NW CORNER NE1/4 SE1/4	20	84N	2W
E1/4 CORNER	20	84N	2W
SW CORNER NE1/4 SE1/4	20	84N	2W
SE CORNER NE1/4 SE1/4	20	84N	2W



I hereby certify that this land surveying document was prepared and related survey work was performed by me or under my direct personal supervision and that I am a duly licensed Land Surveyor under the laws of the State of Iowa.

*William H. Burger* 8/24/2020  
 William H. Burger Date

License number 12642

My license renewal date is December 31, 2020

Pages or Sheets covered by this seal: Sheet 1 of 1

2004 4292

FILED  
RECORDERS OFFICE  
JONES COUNTY IOWA

NOV 16 AM 11:20

MAKIE KRUTZFIELD  
RECORDER 7.00 pd

Prepared by Wm. Burger Land Surveyors 510 3rd Street West Court, Worthington, Iowa Phone 563 - 855 2028

UNITED STATES PUBLIC LAND SURVEY CORNER CERTIFICATE

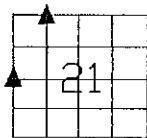
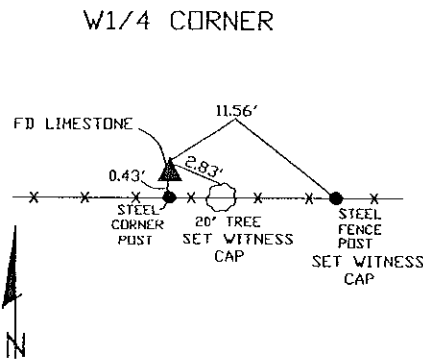
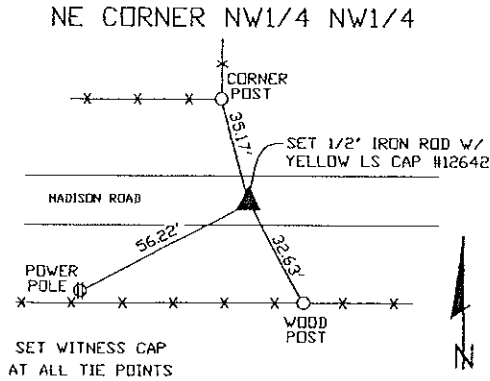
Land Survey Monuments situated in Section 21, Township 84N, Range 2W, of the Fifth Principal Meridian, Jones County, Iowa. Previously recorded in N/A in the Office of the County Recorder

Monument Description and Remarks: (No Corner Certificates found at the County Recorder's Office)

NE CORNER NW1/4 NW1/4 - SET 1/2" IRON ROD W/ YELLOW LS CAP # 12642 - SET ONLINE AND MIDWAY BETWEEN THE N1/4 CORNER AND THE NW CORNER

W1/4 CORNER - FOUND LIMESTONE USING OLD TIES AT THE JONES COUNTY ENGINEERS OFFICE

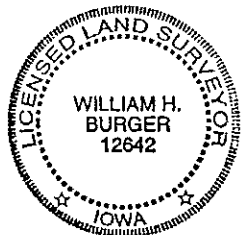
PLAN VIEW



SEC. 21 TWP. 84N RANGE 2W

CORNERS TO BE INDEXED

NE CORNER NW1/4 NW1/4	21	84N	2W
W1/4 CORNER	21	84N	2W



I hereby certify that this land surveying document was prepared and related survey work was performed by me or under my direct personal supervision and that I am a duly licensed Land Surveyor under the laws of the State of Iowa.

*William H. Burger* 11/15/04  
William H. Burger Date

License number 12642

My license renewal date is December 31, 2004

Pages or Sheets covered by this seal: Sheet 1 of 1

# THIS IS NOT A CERTIFICATION

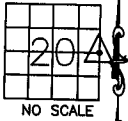
JONES COUNTY ENGINEER'S OFFICE, 19501 HWY. 64, ANAMOSA, IOWA, 52205 (319)462-3785

## UNITED STATES PUBLIC LAND SURVEY CORNER CERTIFICATE

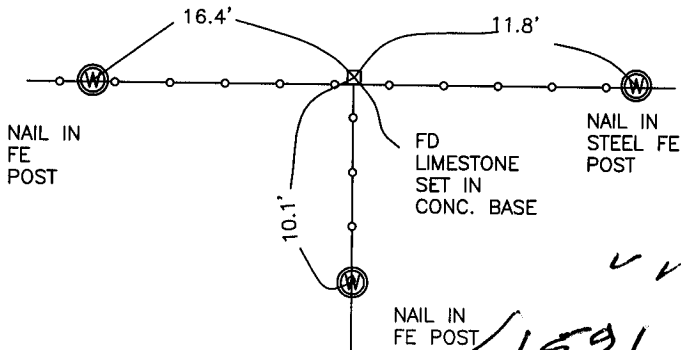
LAND SURVEY MONUMENTS SITUATED IN SECTION 20, TOWNSHIP 84  
NORTH, RANGE 2 WEST OF THE 5TH P.M., JONES COUNTY, IOWA

### CORNERS TO BE INDEXED

CORNER SECTION TOWNSHIP RANGE  
E1/4 20 84N 2W



OFFICE FILE NO.  
84220o\_020504.jpg

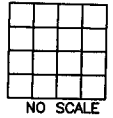


TIES  
DRAWN  
2-05-04  
POWELL

PREVIOUSLY RECORDED IN BOOK NA, PAGE NA  
MONUMENT DESCRIPTION AND HOW ESTABLISHED \_\_\_\_\_  
TIES ON RECORD IN JONES CO. ENGINEER'S OFFICE FROM IDOT  
PROJECT # F-64-1(2)--20-53, DATED 6-23-76, FOR HIGHWAY  
#64.

### CORNERS TO BE INDEXED

CORNER SECTION TOWNSHIP RANGE

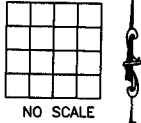


OFFICE FILE NO. \_\_\_\_\_

PREVIOUSLY RECORDED IN BOOK \_\_\_\_\_, PAGE \_\_\_\_\_  
MONUMENT DESCRIPTION AND HOW ESTABLISHED \_\_\_\_\_

### CORNERS TO BE INDEXED

CORNER SECTION TOWNSHIP RANGE

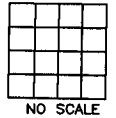


OFFICE FILE NO. \_\_\_\_\_

PREVIOUSLY RECORDED IN BOOK \_\_\_\_\_, PAGE \_\_\_\_\_  
MONUMENT DESCRIPTION AND HOW ESTABLISHED \_\_\_\_\_

### CORNERS TO BE INDEXED

CORNER SECTION TOWNSHIP RANGE



OFFICE FILE NO. \_\_\_\_\_

PREVIOUSLY RECORDED IN BOOK \_\_\_\_\_, PAGE \_\_\_\_\_  
MONUMENT DESCRIPTION AND HOW ESTABLISHED \_\_\_\_\_

~~I hereby declare that this plat, survey or report was made by me or under my direct personal supervision and that I am a duly registered Land Surveyor under the laws of the State of Iowa.~~

Signed: \_\_\_\_\_

SEAL

JONES COUNTY  
ENGINEER'S OFFICE

19501 HWY. 64,  
ANAMOSA, IOWA,  
52205 (319)462-3785

*JP*