

Instrument #: 2023-1467
 06/23/2023 03:52:03 PM Total Pages: 1
 ZSC SECTION CORNER CERTIFICATE
 Recording Fee: \$7.00 Transfer Tax: \$0
 Sheri L. Jones, Recorder, Jones County Iowa



PREPARED BY: MICHAEL J. WEBER, WEBER SURVEYING, LLC, 26789 46TH AVE, BERNARD, IA 52032 (563) 879-4173

UNITED STATES PUBLIC LAND SURVEY CORNER CERTIFICATE
 LAND SURVEY MONUMENTS SITUATED IN SECTION 20, TOWNSHIP 84 NORTH, RANGE 2 WEST
 OF THE FIFTH PRINCIPAL MERIDIAN, JONES COUNTY, IOWA.
 PREVIOUSLY RECORDED SEE NOTES BELOW

(book, page, document number, etc.)

(Show reason for preparing this certificate, the evidence and detailed procedures used in establishing the corner positions and monumentation found or placed.)

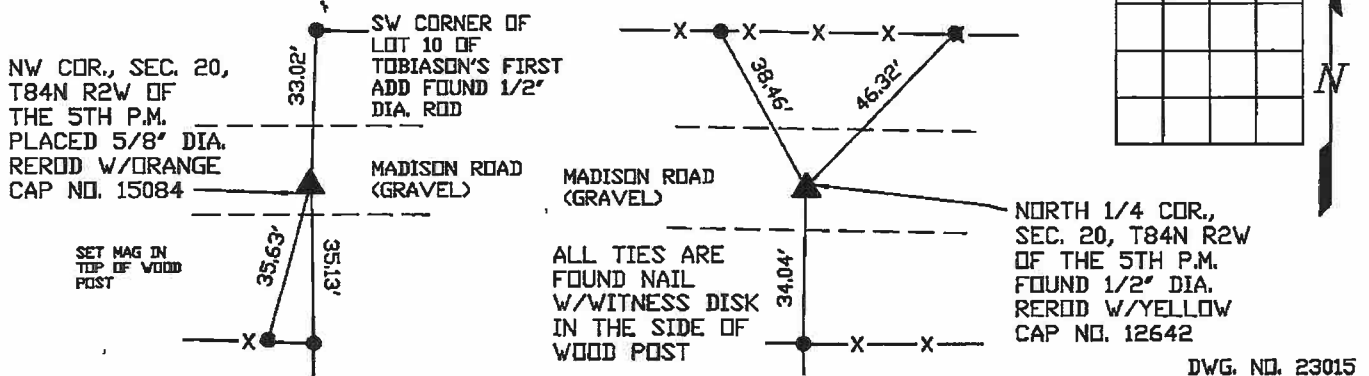
Monument Description and Remarks:

-NORTH 1/4 COR., SEC. 20, T84N R2W OF THE 5TH P.M. FOUND 1/2" DIA. REROD W/YELLOW CAP NO. 12642 AS SHOWN IN EASEMENT FOR PUBLIC HIGHWAY DOC. NO. 2021-0607. CORNER PREVIOUSLY RECORDED IN SEC. COR. CERT. DOC. NO. 2001 2746.

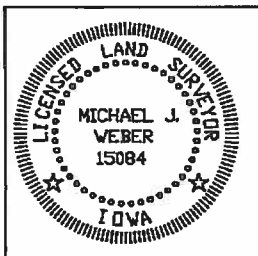
-NW COR., SEC. 20, T84N R2W OF THE 5TH P.M. PLACED 5/8" DIA. REROD W/ORANGE CAP NO. 15084 ESTABLISHED CORNER USE THE PLAT OF TOBIASON'S FIRST ADDITION RECORDED IN PLAT BOOK G PAGE 86 OF THE JONES COUNTY RECORDER'S OFFICE.

(Show a minimum of three reference ties to durable physical objects, relevant monuments and physical conditions that will enable recovery of the corner.)

PLAN - VIEW



DWG. NO. 23015



I HEREBY CERTIFY THAT THIS LAND SURVEYING DOCUMENT WAS PREPARED AND THE RELATED SURVEY WORK WAS PERFORMED BY ME OR UNDER MY DIRECT PERSONAL SUPERVISION AND THAT I AM A DULY LICENSED LAND SURVEYOR UNDER THE LAWS OF THE STATE OF IOWA.
Michael J. Weber June 22, 2023
 MICHAEL J. WEBER (DATE)
 LICENSE NUMBER 15084
 MY LICENSE RENEWAL DATE IS DECEMBER 31, 2023
 SHEETS COVERED BY THIS SEAL: This sheet

List Corners to be Indexed

Corner	Sec	Twp	Range
NORTH 1/4 COR.	20	84N	2W
NW COR.,	20	84N	2W

2001 2746
 FILED
 RECORDERS OFFICE
 JONES COUNTY IOWA

01 AUG -6 AM 8:43

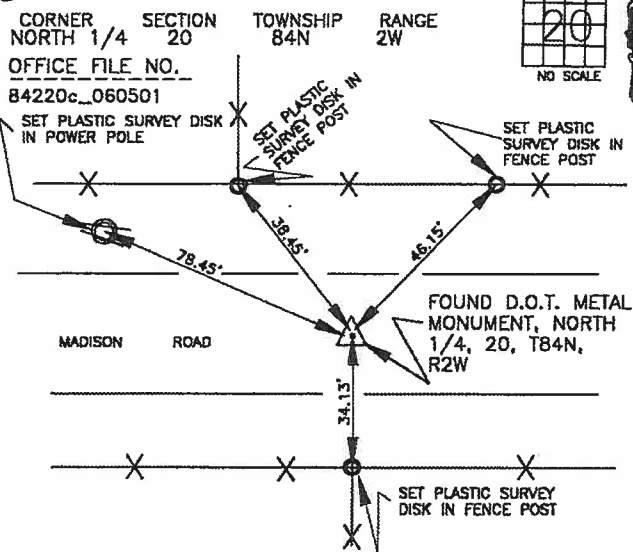
MARIE KRUTZFIELD
 RECORDER NO FEE

J.D. TJEPKES, LS. JONES COUNTY ENGINEER'S OFFICE, 19501 HWY. 64, ANAMOSA, IOWA, 52205 (319)462-3785

UNITED STATES PUBLIC LAND SURVEY CORNER CERTIFICATE

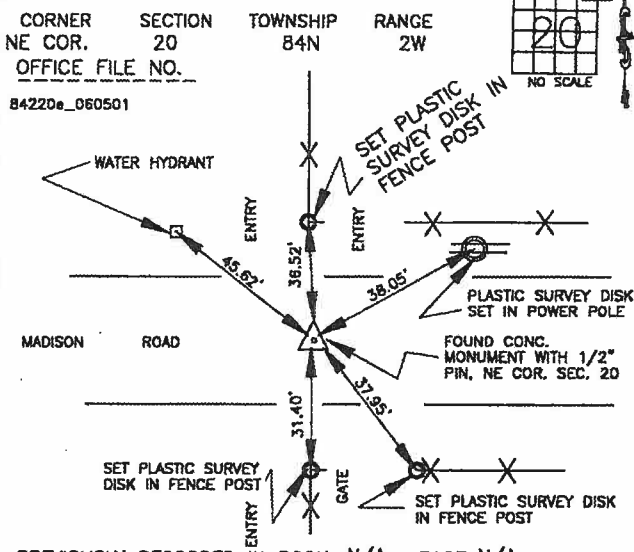
LAND SURVEY MONUMENTS SITUATED IN SECTION 20, TOWNSHIP 84
 NORTH, RANGE 2 WEST OF THE 5TH P.M., JONES COUNTY, IOWA

958 CORNERS TO BE INDEXED



PREVIOUSLY RECORDED IN BOOK N/A, PAGE N/A
 MONUMENT DESCRIPTION AND HOW ESTABLISHED FOUND D.O.T.
 4"X30" METAL MONUMENT 8" BELOW ROAD SURFACE PER
 COUNTY ENGINEER'S RECORD TIES, SET REFERENCE POINTS
 AND TIED OUT AS INDICATED. NORTH QUARTER CORNER,
 SECTION 20, T84N, R2W, JONES COUNTY, IOWA

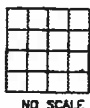
959 CORNERS TO BE INDEXED



PREVIOUSLY RECORDED IN BOOK N/A, PAGE N/A
 MONUMENT DESCRIPTION AND HOW ESTABLISHED FOUND
 CONCRETE MONUMENT WITH 1/2" REBAR 0.3' BELOW SURFACE
 PER COUNTY ENGINEER'S TIES FROM THE D.O.T. SET
 REFERENCE POINTS AND TIED OUT AS INDICATED. NORTHEAST
 CORNER SECTION 20, T84N, R2W, JONES COUNTY, IOWA

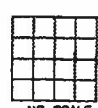
CORNERS TO BE INDEXED

CORNER SECTION TOWNSHIP RANGE
 OFFICE FILE NO. _____



CORNERS TO BE INDEXED

CORNER SECTION TOWNSHIP RANGE
 OFFICE FILE NO. _____



PREVIOUSLY RECORDED IN BOOK _____, PAGE _____
 MONUMENT DESCRIPTION AND HOW ESTABLISHED _____

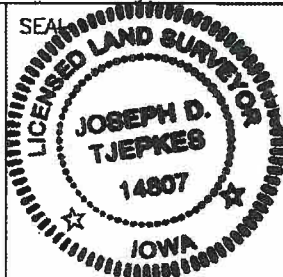
PREVIOUSLY RECORDED IN BOOK _____, PAGE _____
 MONUMENT DESCRIPTION AND HOW ESTABLISHED _____

I hereby declare that this plat, survey or report was made by me or under my direct personal supervision and that I am a duly registered Land Surveyor under the laws of the State of Iowa.

Signed:

Joseph D. Tjepkes 8-26-01

Joseph D. Tjepkes L.S. Iowa Reg. No. 14807
 My Registration Renewal Date is December 31, 2002



J.D. TJEPKES LS 14807
 JONES COUNTY
 ENGINEER'S OFFICE

19501 HWY. 64,
 ANAMOSA, IOWA,
 52205 (319)462-3785