

COPY

FEEBOOK: 2009 2960 8/26/2009 9:10 AM
 REC FEES: No Fee
 PAGES: 1

Marie Krutzfield, Recorder
 Jones County, Iowa

PREPARED BY
 CLARENCE J. WALTON, JONES COUNTY ENGINEER'S OFFICE, 19501 HWY. 64, ANAMOSA, IOWA, 52205 (319) 462-3785

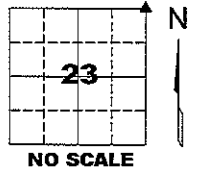
UNITED STATES PUBLIC LAND
 SURVEY CORNER CERTIFICATE

LAND SURVEY MONUMENTS SITUATED IN SECTION 23, TOWNSHIP 84 NORTH,
 RANGE 2 WEST OF THE 5TH PRINCIPAL MERIDIAN, JONES COUNTY, IOWA.

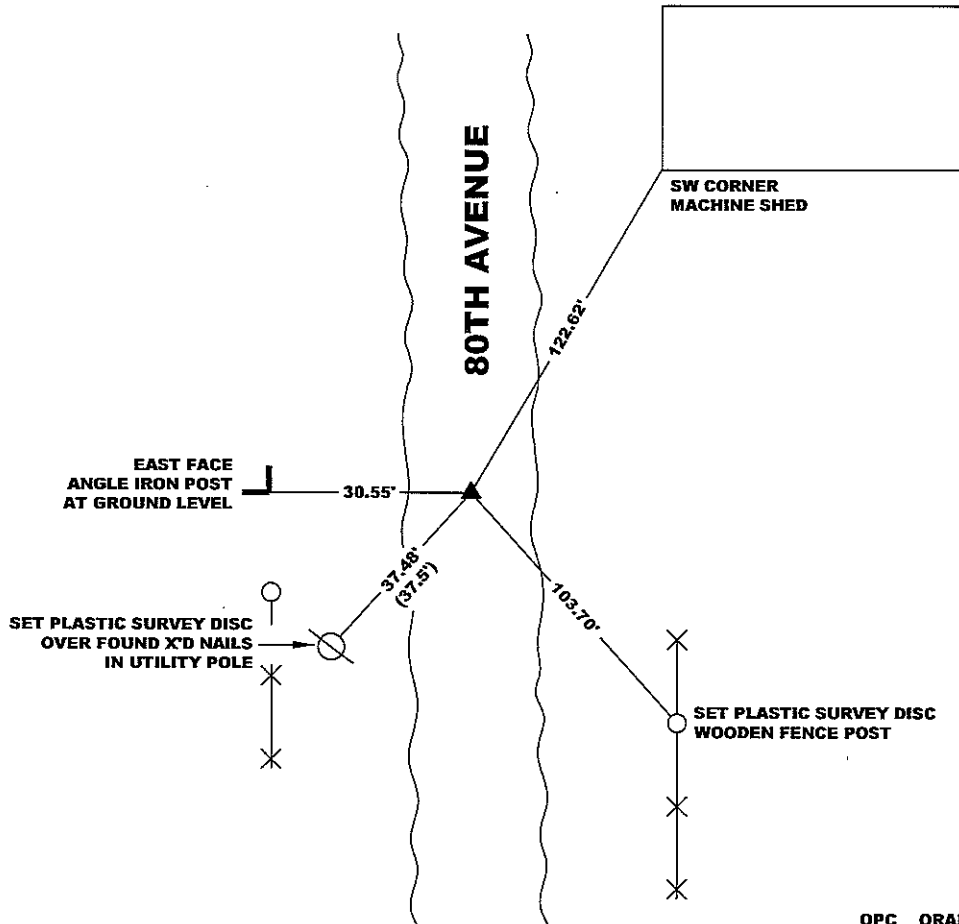
OFFICE FILE NO.

STATE PLANE COORDINATE
 NAD 83 IOWA NORTH
 N 3501049.95
 E 5590579.19

CORNER SECTION TOWNSHIP RANGE
 NE CORNER 23 T84N R2W



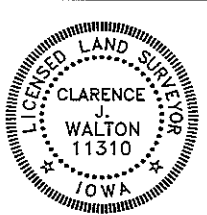
NOTE:
 THE STATE PLANE COORDINATE AS INDICATED IS FOR
 CONVENIENCE ONLY. THE TIES AS SHOWN SHOULD BE USED TO
 REPLACE THE CORNER, IF DESTROYED



PREVIOUSLY RECORDED IN BOOK 362, PAGE 88

MONUMENT DESCRIPTION AND HOW ESTABLISHED FOUND 5/8" REBAR ±3" BELOW ROAD SURFACE AS PER CORNER CERTIFICATE RECORDED IN
 BOOK 362, PAGE 88 IN THE RECORDS OF THE JONES COUNTY, IOWA RECORDER.

FIELD BOOK 375, PAGE 152. DATE OF SURVEY: 8/25/09



I hereby certify that this land surveying document
 and the related survey work was performed by me
 or under my direct personal supervision and that
 I am a duly registered Land Surveyor under the laws
 of the State of Iowa.
 Signed:
Clarence J. Walton 8/26/09
 Clarence J. Walton, L.S.
 My Registration Renewal Date is December 31, 2009
 Iowa License Number 11310
 Pages or sheets covered by this seal: 1 of 1.

- A. THERE IS NO CERTIFICATE FOR THE CORNER ON FILE WITH THE RECORDER OF THE COUNTY IN WHICH THE CORNER IS LOCATED.
- B. THE CORNER MONUMENT HAS BEEN REPLACED OR MODIFIED.
- C. THE SURVEYOR IN RESPONSIBLE CHARGE OF THE LAND SURVEYING ACCEPTS A CORNER POSITION THAT DIFFERS FROM THAT SHOWN IN THE PUBLIC RECORDS OF THE COUNTY IN WHICH THE CORNER IS LOCATED.
- D. THE REFERENCE TIES REFERRED TO IN AN EXISTING PUBLIC RECORD NO LONGER EXIST.
- E. ADDED TIES TO FACILITATE LOCATING SECTION CORNER MONUMENT.

CORNERS TO BE INDEXED

CORNER	SECTION	TOWNSHIP	RANGE
NE	23	84N	2W
SE	14	84N	2W
SW	13	84N	2W
NW	24	84N	2W

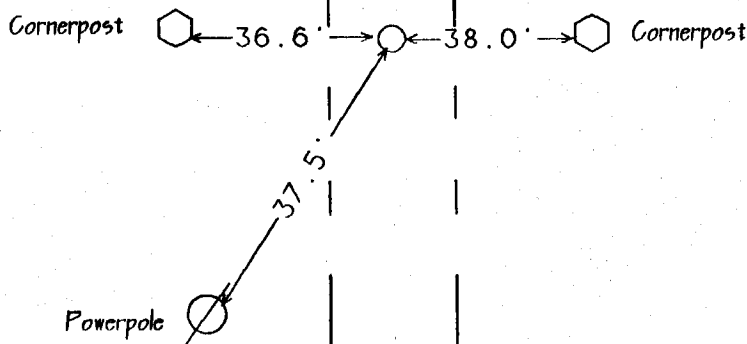
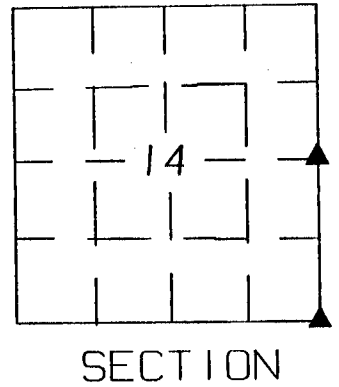
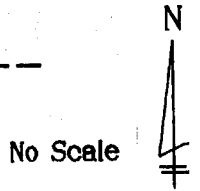
JONES COUNTY ENGINEER'S OFFICE



19501 HWY. 64, ANAMOSA, IOWA 52205
 (319) 462-3785

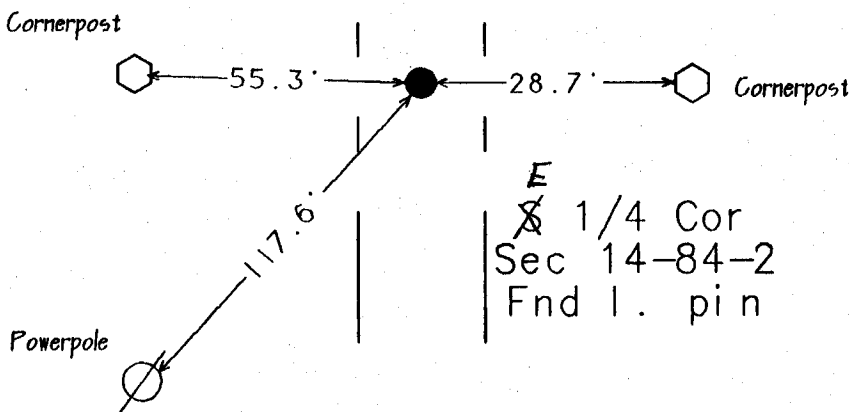
United States Public Land Survey Corner Certificate

Land survey corner in Section 14 Township 84
North, Range 2 West of the 5th Principal Meridian
Jones County, Iowa.



SE Corner
Sec. 14-84-2
Set 5/8" l. pin

*ON
NE Cor.
Sec. 23
1-1-94*



~~E~~
1/4 Cor
Sec 14-84-2
Fnd l. pin

*ON CARD
1-1-94*

Certification

I hereby certify that this plot and survey was made by me or under my direct supervision and that I am a duly Registered Land Surveyor under the laws of the State of Iowa.

Harold E. Dillon 6/28/94
Harold E. Dillon Reg.#6581 date

